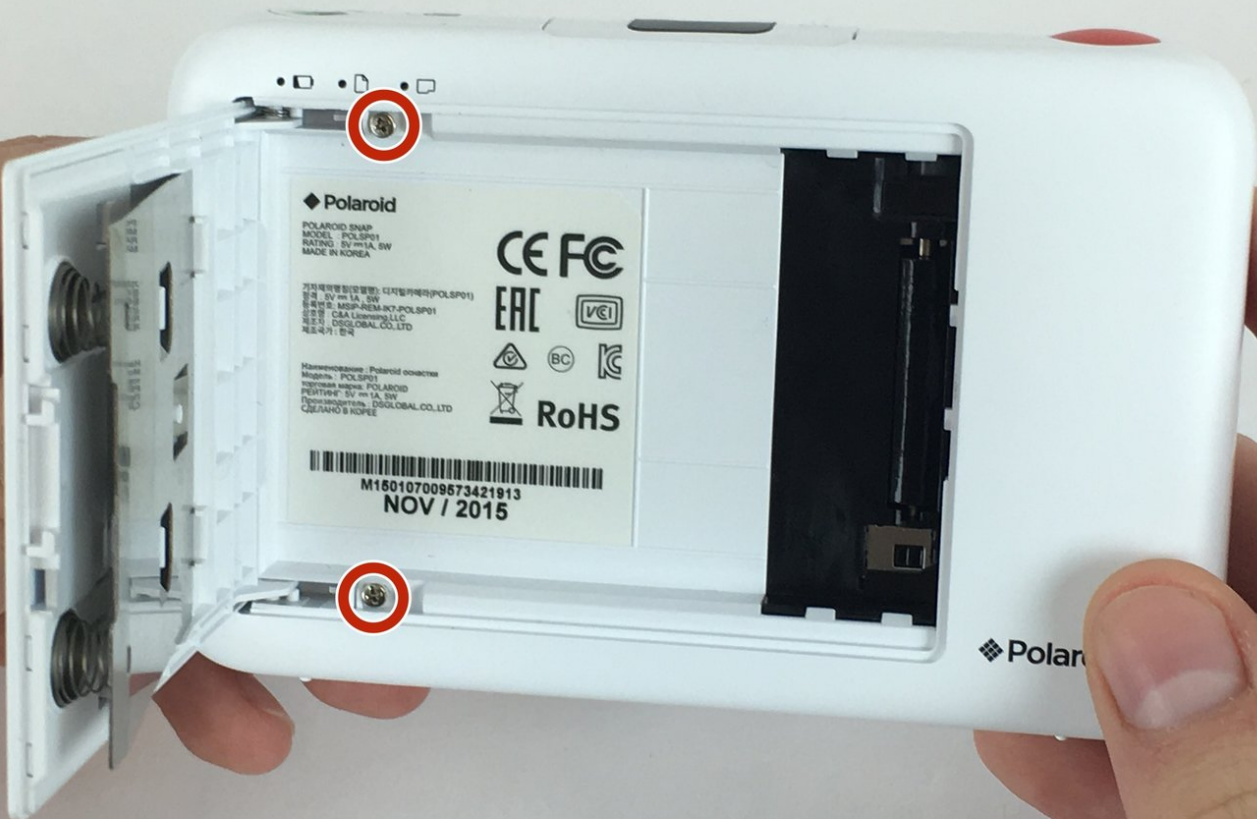




Polaroid SNAP Paper Door Replacement

This guide will explain how to replace the paper door.

Written By: Ian Colantuoni



INTRODUCTION

When changing the paper door cover, be careful to not snap the plastic.



TOOLS:

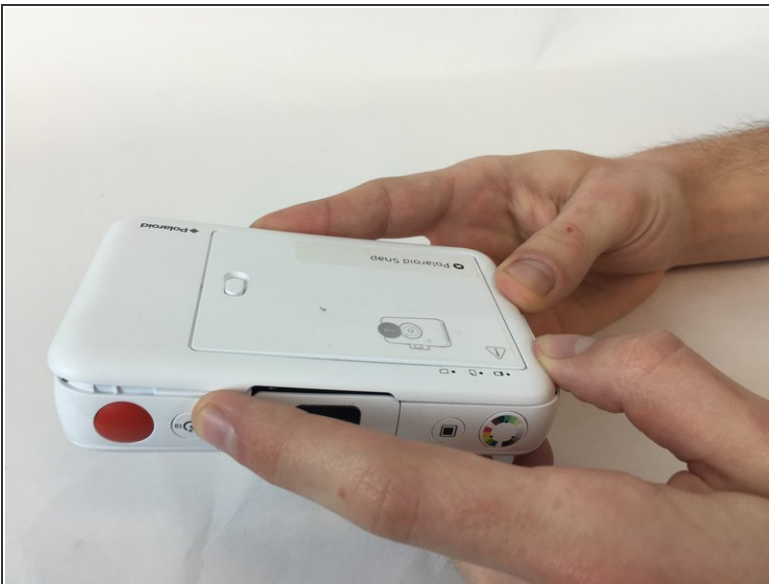
- [iFixit Opening Tools](#) (1)
 - [JIS Driver Set](#) (1)
-

Step 1 — Paper Door



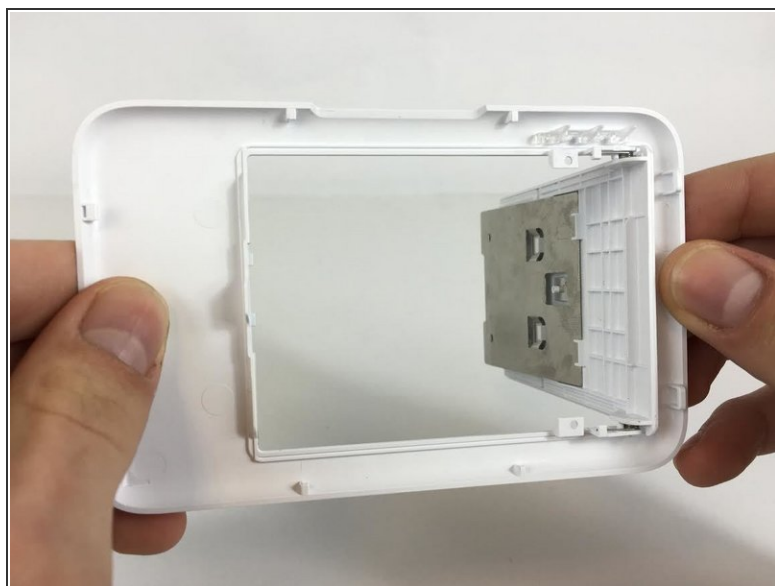
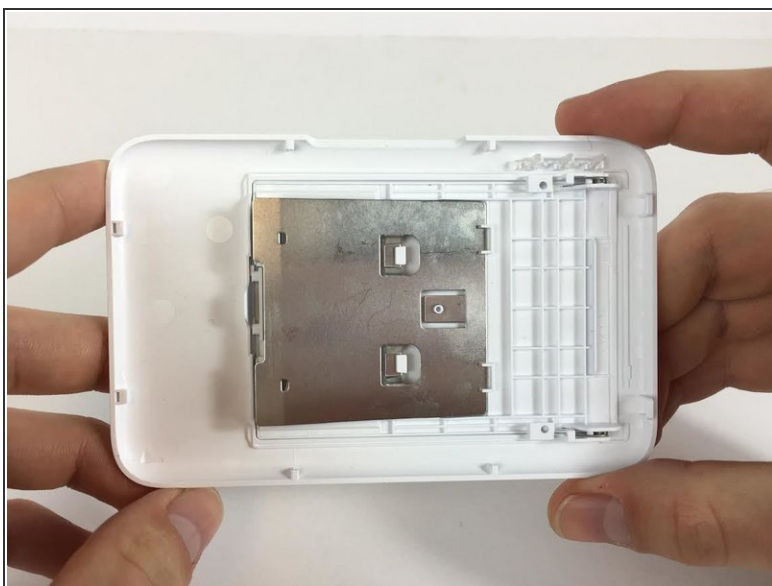
- Open the paper door of the camera, then locate and remove the screws that are on the top and bottom edge of the inside of the camera.
- Screw head: Phillips, Screw length: 3mm

Step 2



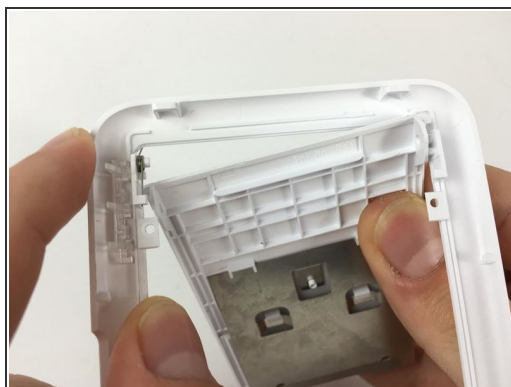
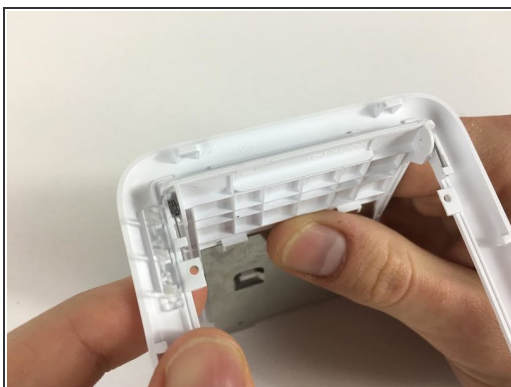
- Push the rear face plate from the short side nearest the screws you just removed towards the other short side of the camera. It should slide forward and unlock the clips holding it in place.

Step 3



- Turn rear face plate over.

Step 4



- Maneuver the plastic paper door out of the sockets one at a time. Make sure to be gentle so the plastic does not snap. Also, make sure to keep track of the small springs.

To reassemble your device, follow these instructions in reverse order.