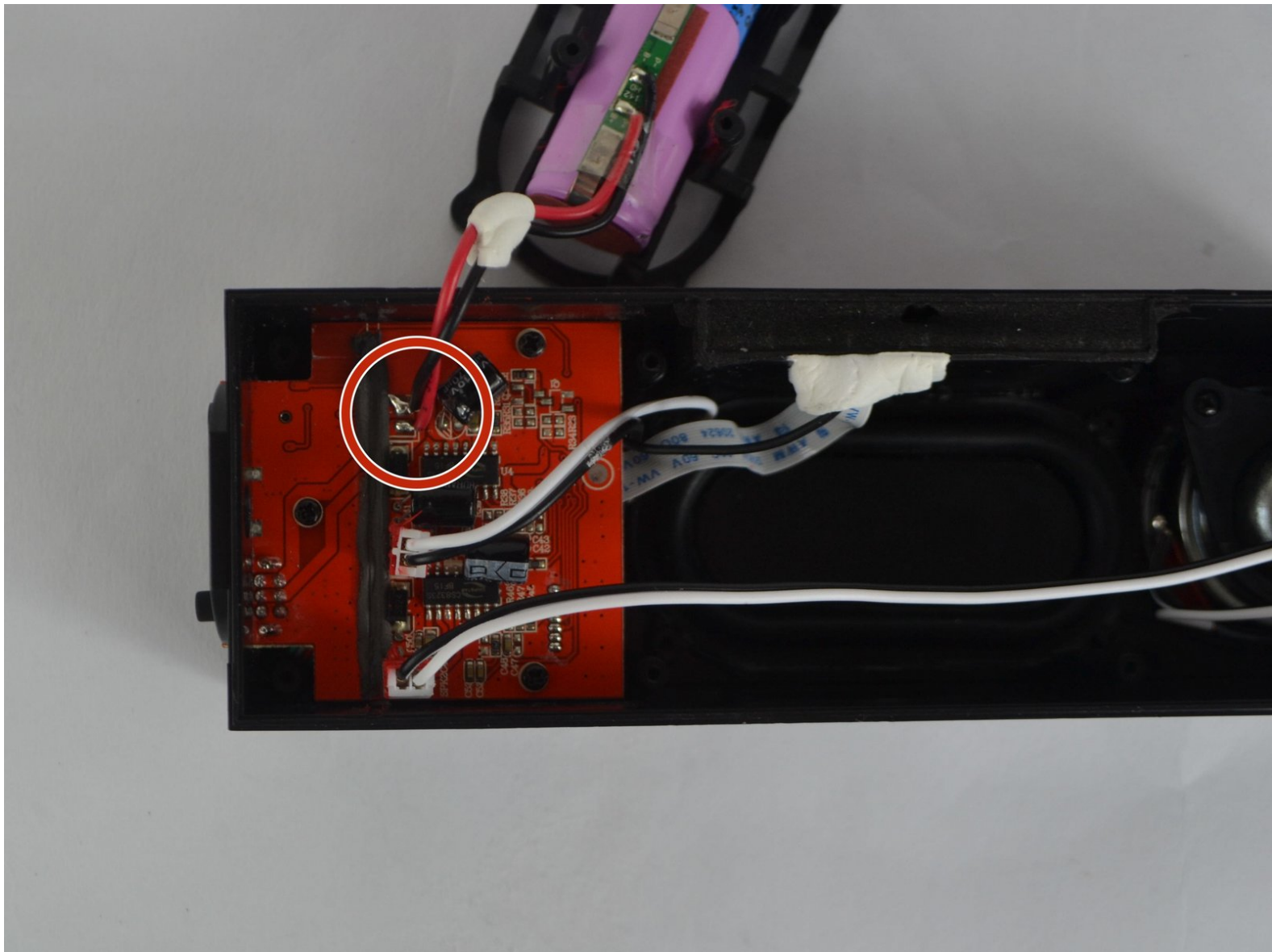




Photive Hydra Battery Replacement

This guide will show you how to remove and replace a dead battery.

Written By: Andrew Chase



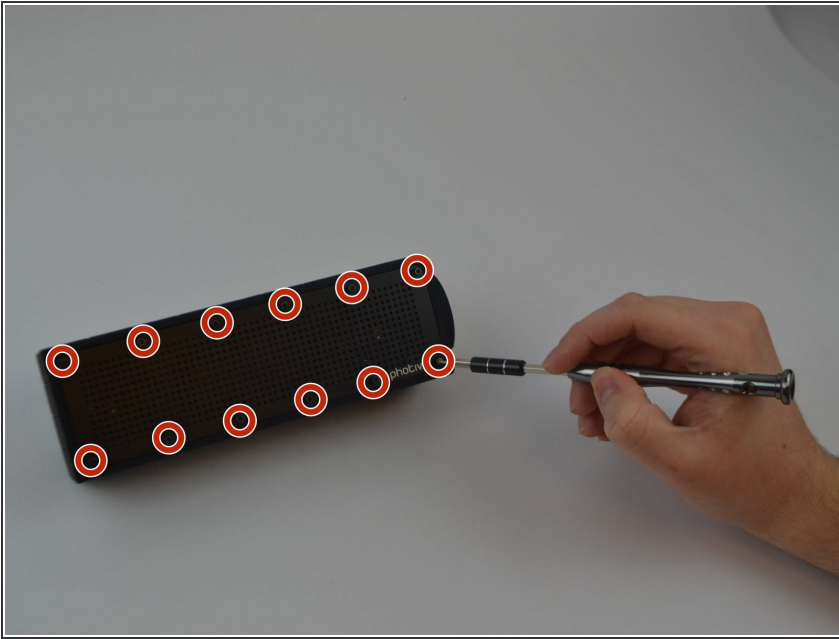
INTRODUCTION

This guide will show you how to remove and replace a dead battery.

TOOLS:

- [Phillips #1 Screwdriver](#) (1)
 - [iFixit Opening Tools](#) (1)
 - [1.5mm Hex Screwdriver](#) (1)
 - [Soldering Iron](#) (1)
-

Step 1 — Face Plate and Back Plate



- Unscrew all twelve Hex Head 1.5 (Length-3/8", Head- 1/8") screws using a 1.5mm hex screwdriver.

Step 2



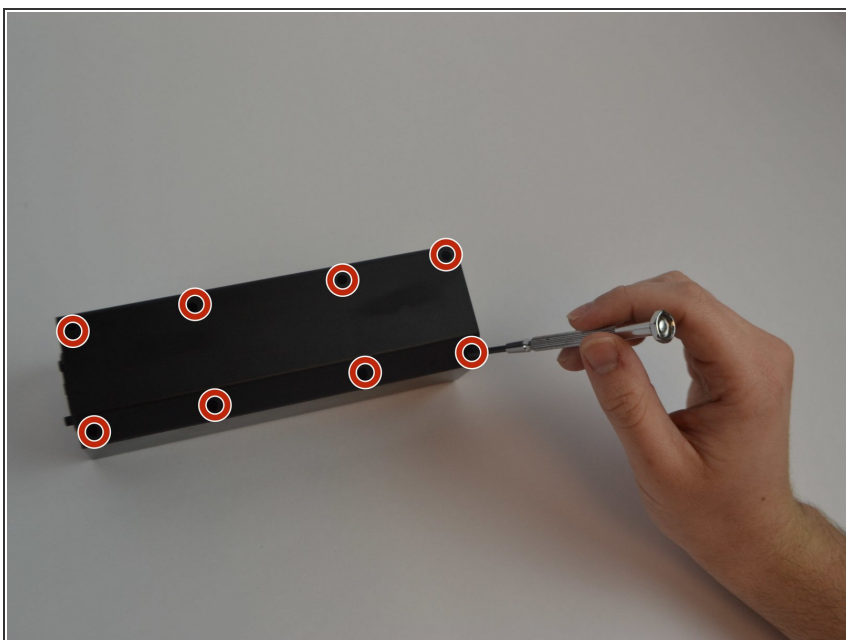
- Use a plastic opening tool to pry off the face plate.

Step 3



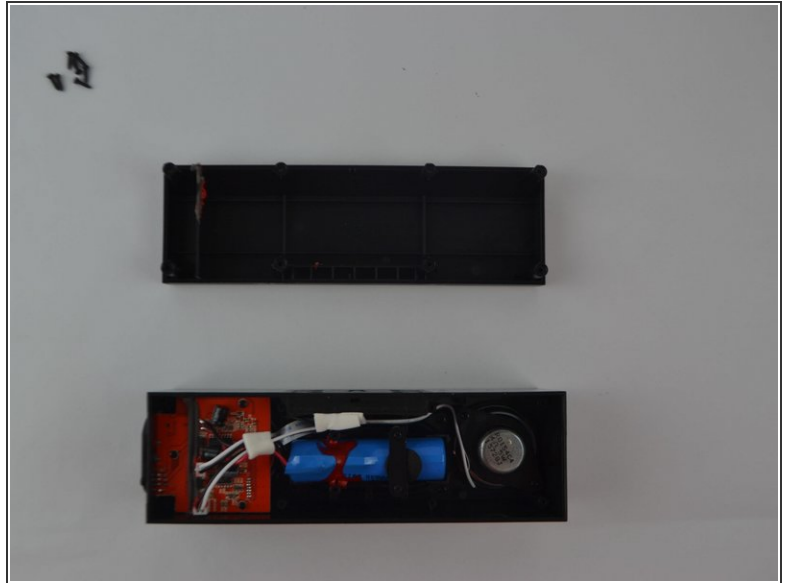
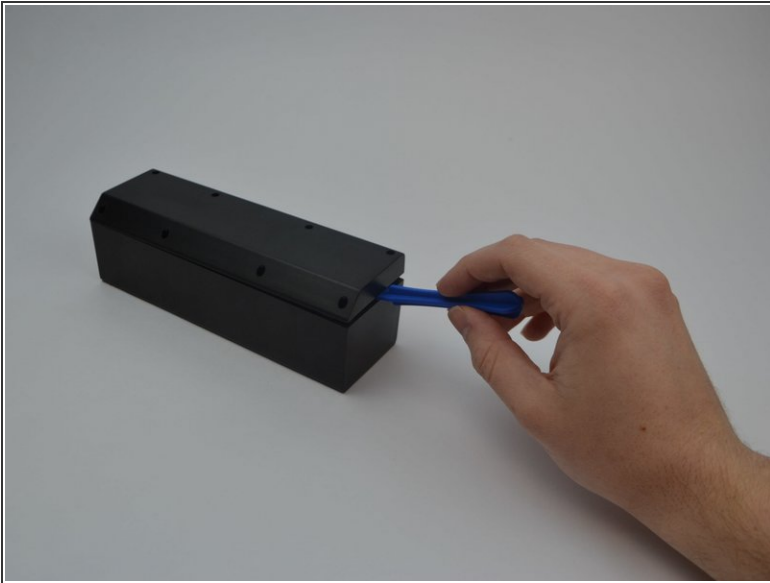
- Remove the rubber casing by using your fingers to pull off. Be sure not to tear or rip the rubber casing.

Step 4




- Flip the device upside down and remove all eight Phillips (Length-3/8", Head-1/8") screws using a standard #1 Phillips screwdriver.

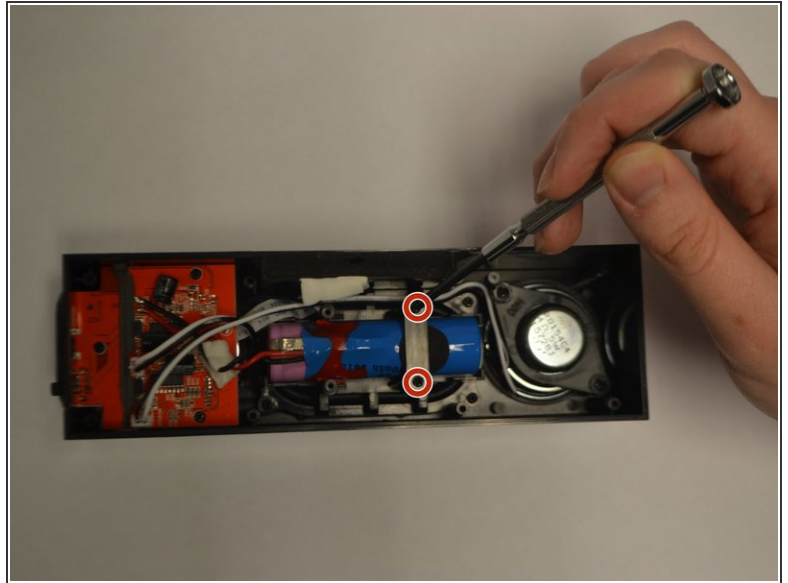
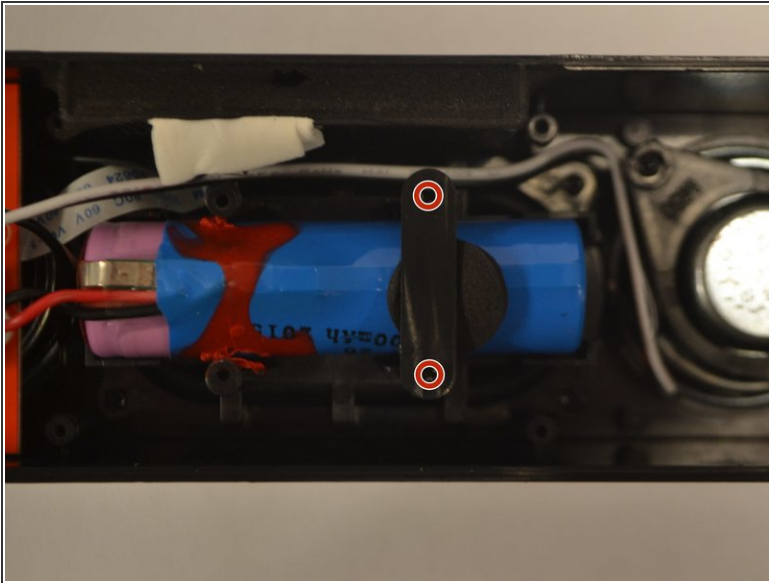
Step 5



- Use plastic opening tool to pry off back plate.
- Move the plastic opening tool along the the device to further pry open the device.

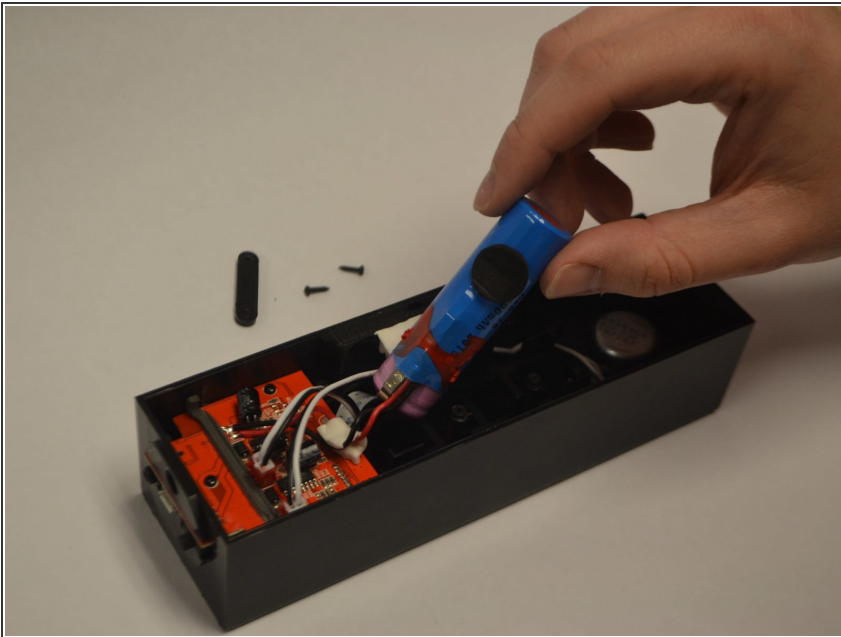
 Be careful when taking this plate off. You may accidentally damage the water proof seal.

Step 6 — Battery (Prerequisite)



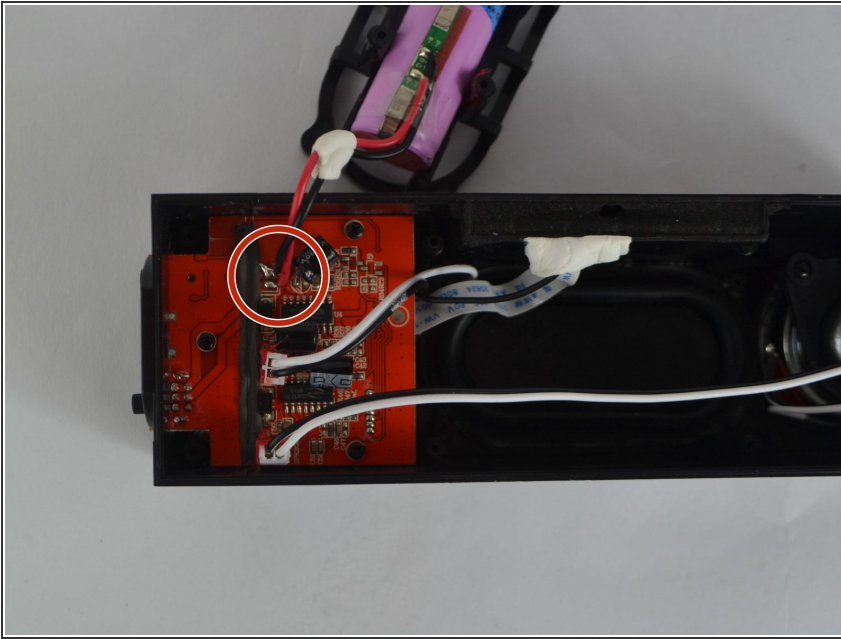
- Identify the two Phillips (Length-5/16", Head-1/8") screws holding the battery in place and remove them using a #1 screwdriver.

Step 7



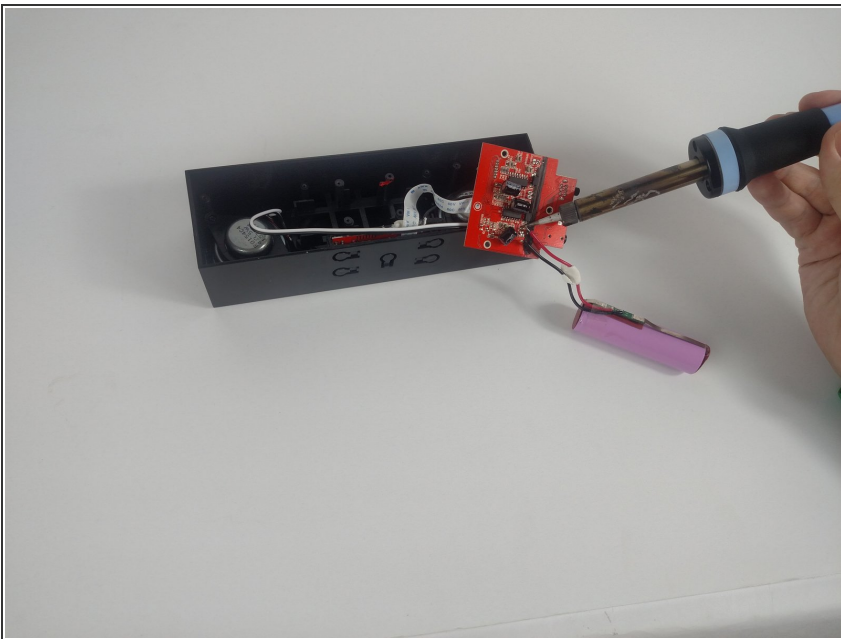
- Remove the ICR18650-26M battery from its position by pulling upwards and out of the casing.

Step 8 — Battery



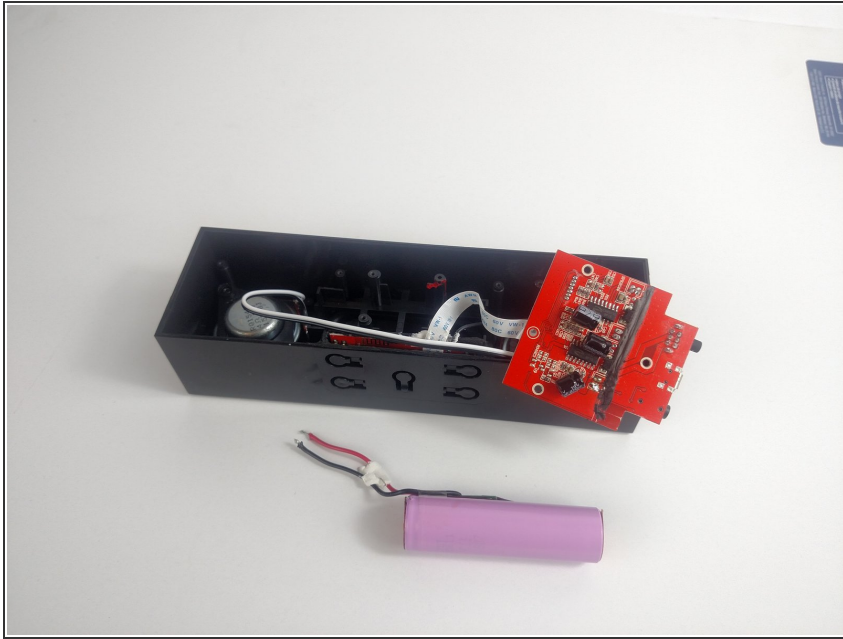
- identify the two points that will need soldering.

Step 9



- In this step you will perform the soldering to remove the positive(red) and negative(black) wires).

Step 10



- Once the solder is removed your battery is now removed and can be replaced with the new battery.

To reassemble your device, follow these instructions in reverse order.