



Coby Kyros MID7024 Battery Replacement

This repair guide details the steps required to access and remove the internal battery of the Coby Kyros MID7024.

Written By: Kyle Williams



INTRODUCTION

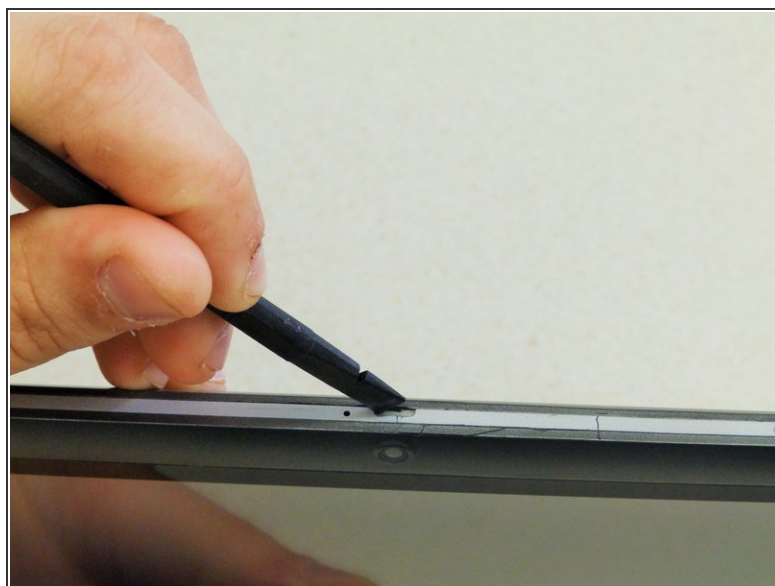
This repair guide will walk the user through the steps required to access and remove the internal battery of the Coby Kyros MID7024. Be sure to refer to the list of needed tools.



TOOLS:

- [Spudger](#) (1)
 - [Portable Soldering Iron](#) (1)
-

Step 1 — Back Cover



✦ Begin by ensuring that the device is powered off.

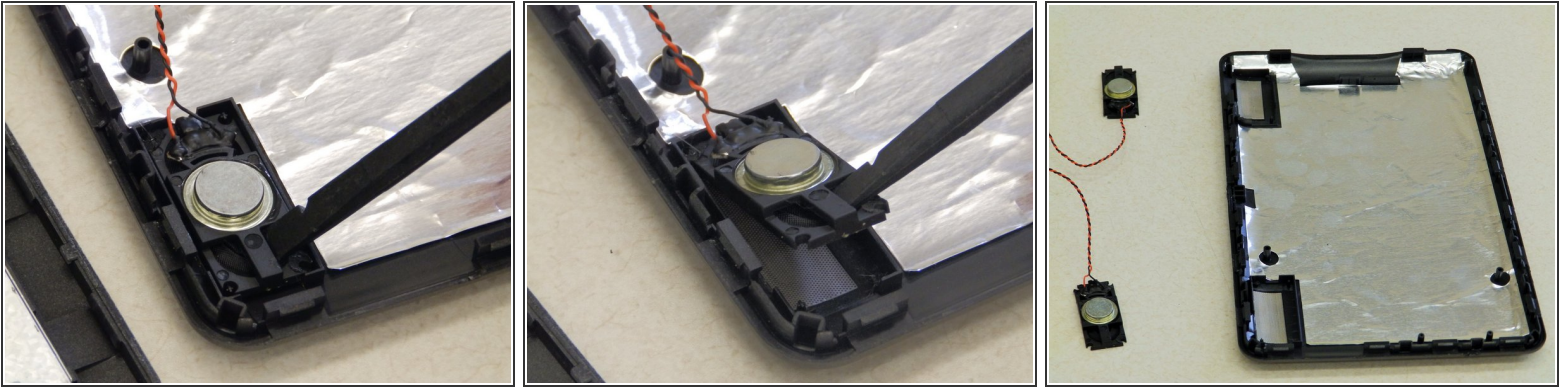
- To replace the back cover of the device you must pry it open using the access points. One is located on the top of the device above the camera and the other is on the bottom left hand side.
- Use the spudger to pry at the access points to open the device.

Step 2



- Once the back cover begins to separate from the body of the device continue working the spudger around the perimeter of the device until the back cover is free.
- ⚠ You will hear some popping and cracking noises as you pry open the device. These sounds are the internal clips coming apart.
- Once the back cover is free from the body of the device, open both sides like a book, placing them flat on the table as shown. Be sure to pay attention to the speaker wires that hold the two pieces together.

Step 3



⚠ This step is only necessary if you intend to repair or replace the back cover and/or speakers of the device.

- In order to replace the back cover you must remove the speakers. Place the Spudger under the plastic frame of the speaker as shown. Pry up, popping the corners of the speakers out of their bracket and lift the speaker out.

⚠ Be sure not to pull on the speaker's wires or body too hard as you may damage them.

Step 4 — Battery



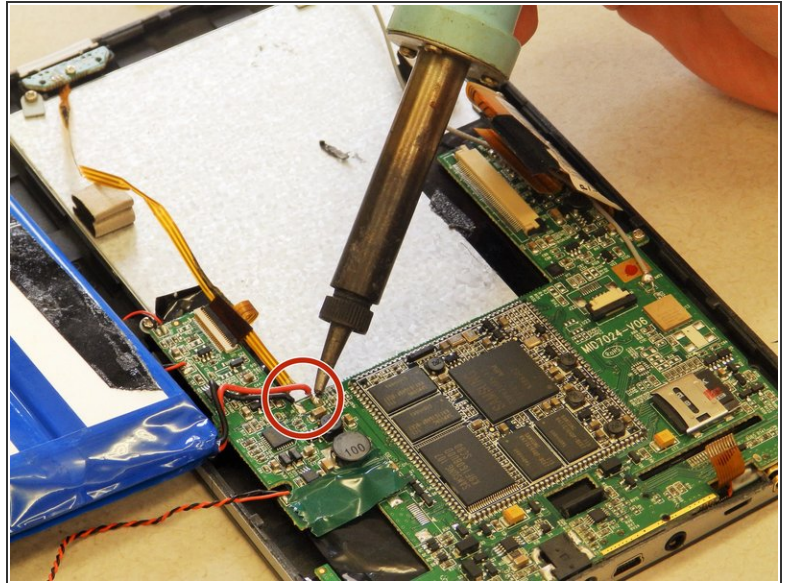
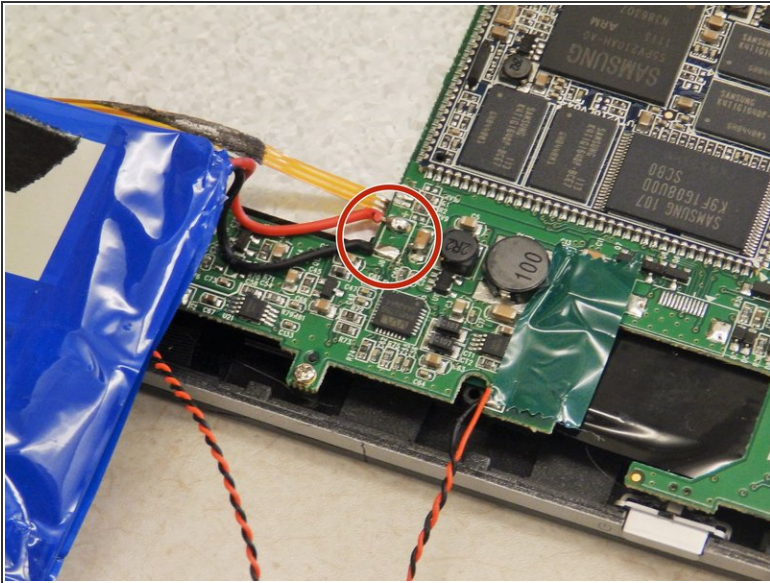
- Locate the black tape connected to the battery and peel it back as indicated in the images.

Step 5



- i** The battery is held to the device with two adhesive strips located on its underside.
- After the battery is freed from the device, it will remain connected to the motherboard by two short wires.
 - Use the spudger tool to gently pry around both sides of the battery until it can be lifted from the device.
 - Roll the battery over (as shown in the image) so that its underside is now facing up. This will prevent damage to the motherboard.

Step 6



- Use a soldering gun to remove the positive and negative wires connecting the battery to the motherboard.
- ⓘ Follow [the guide on soldering](#) to assist you in removing the battery.

To reassemble your device, follow these instructions in reverse order.