



Coby Kyros MID7024 Back Cover Replacement

Replace Back Cover in case of back cover damage or remove to gain access to internal parts.

Written By: Kyle Williams



INTRODUCTION

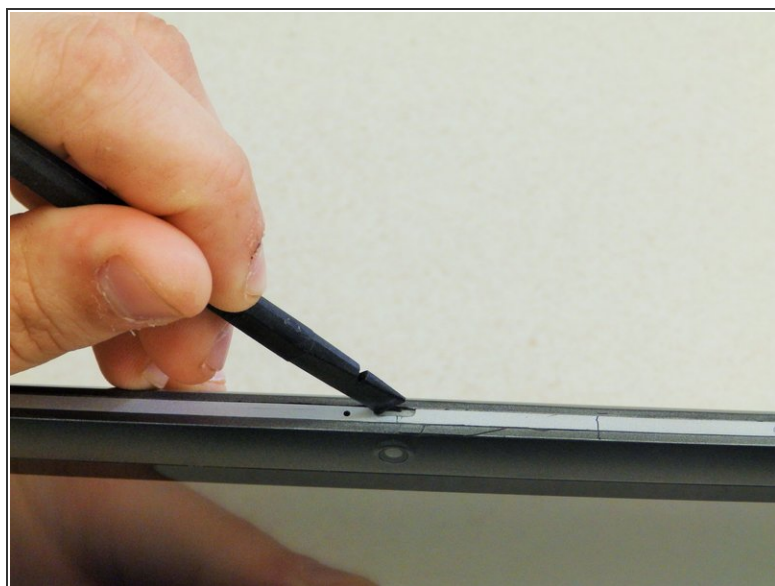
This guide will give a basic description of the removal of the back cover. When the back cover is removed initially it is still attached to the body of the device with two wires leading to the speakers. Included in the later steps of this guide is instructions to remove the speakers from the back cover, completely separating the back cover from the rest of the device. Be sure to check the list of needed tools.



TOOLS:

- [Spudger](#) (1)
-

Step 1 — Back Cover



✦ Begin by ensuring that the device is powered off.

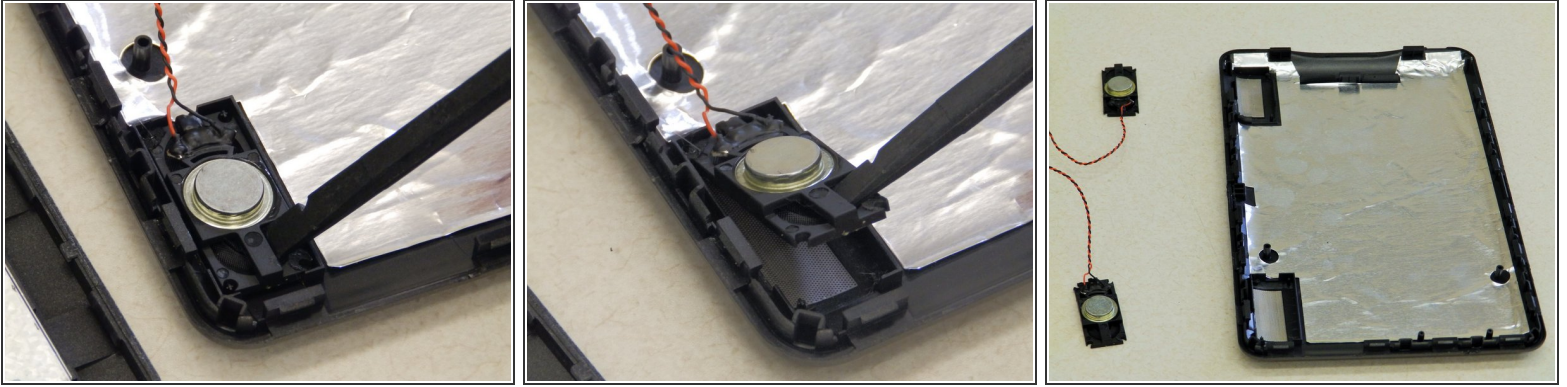
- To replace the back cover of the device you must pry it open using the access points. One is located on the top of the device above the camera and the other is on the bottom left hand side.
- Use the spudger to pry at the access points to open the device.


Step 2




- Once the back cover begins to separate from the body of the device continue working the spudger around the perimeter of the device until the back cover is free.
- ⚠ You will hear some popping and cracking noises as you pry open the device. These sounds are the internal clips coming apart.
- Once the back cover is free from the body of the device, open both sides like a book, placing them flat on the table as shown. Be sure to pay attention to the speaker wires that hold the two pieces together.

Step 3



 This step is only necessary if you intend to repair or replace the back cover and/or speakers of the device.

- In order to replace the back cover you must remove the speakers. Place the Spudger under the plastic frame of the speaker as shown. Pry up, popping the corners of the speakers out of their bracket and lift the speaker out.

 Be sure not to pull on the speaker's wires or body too hard as you may damage them.

To reassemble your device, follow these instructions in reverse order.