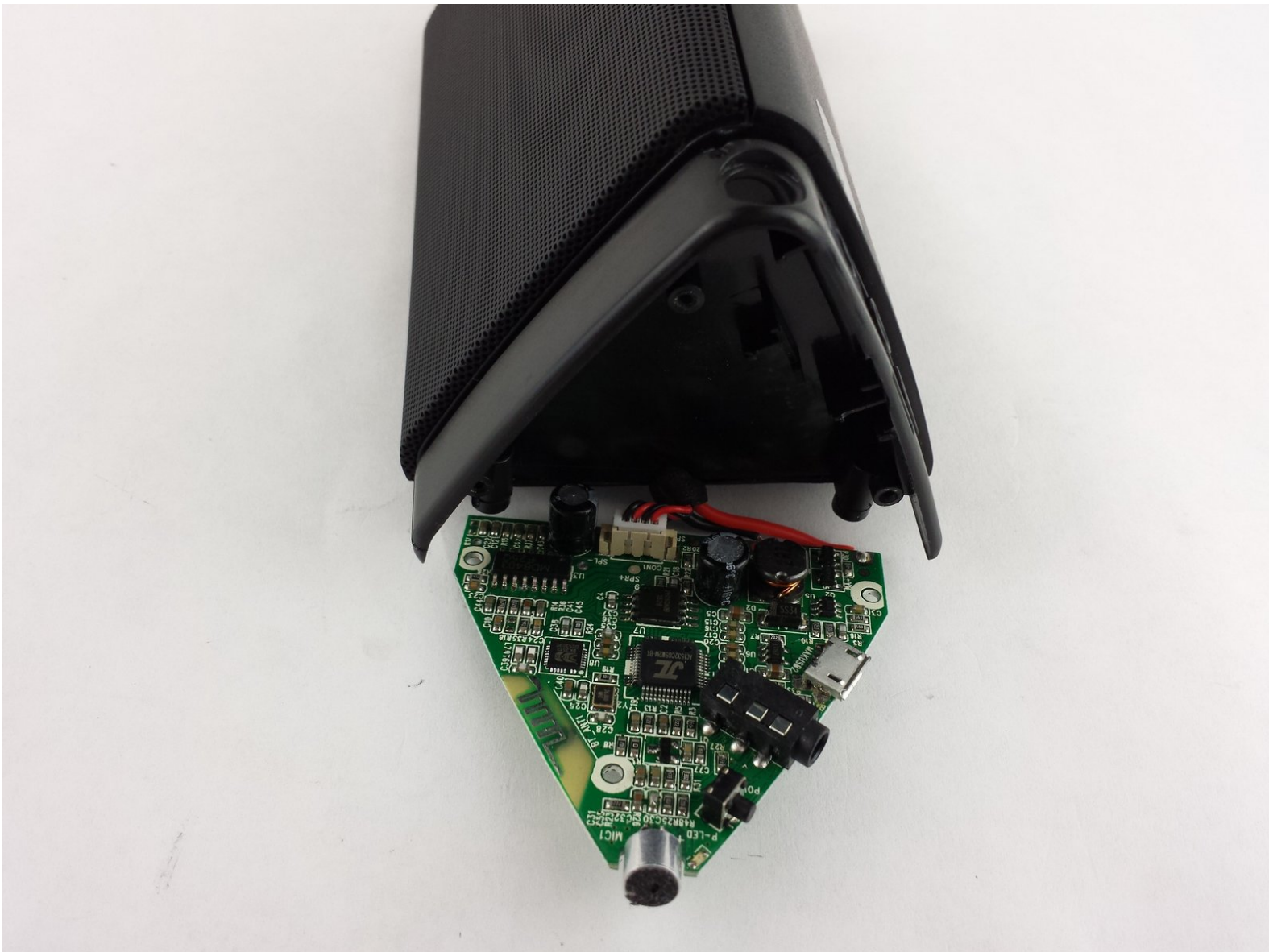




OontZ Angle 3 Motherboard Replacement

With this guide you will learn how to access and replace the motherboard of your OontZ Angle 3 bluetooth speaker.

Written By: Mason Hollander



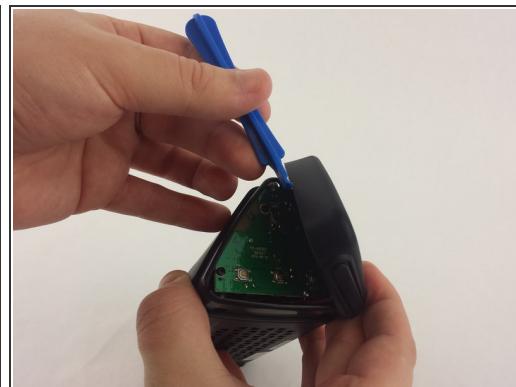
INTRODUCTION

In this guide, some soldering is required when disconnecting the battery and the speakers from the motherboard. If you are unfamiliar with soldering, watch [Soldering Tutorial for Beginners, Five Easy Steps](#) to familiarize yourself and to be able to disconnect the battery and speaker.

TOOLS:

- [Phillips #0 Screwdriver](#) (1)
 - [iFixit Opening Tools](#) (1)
 - [Soldering Iron](#) (1)
-

Step 1 — Back Case



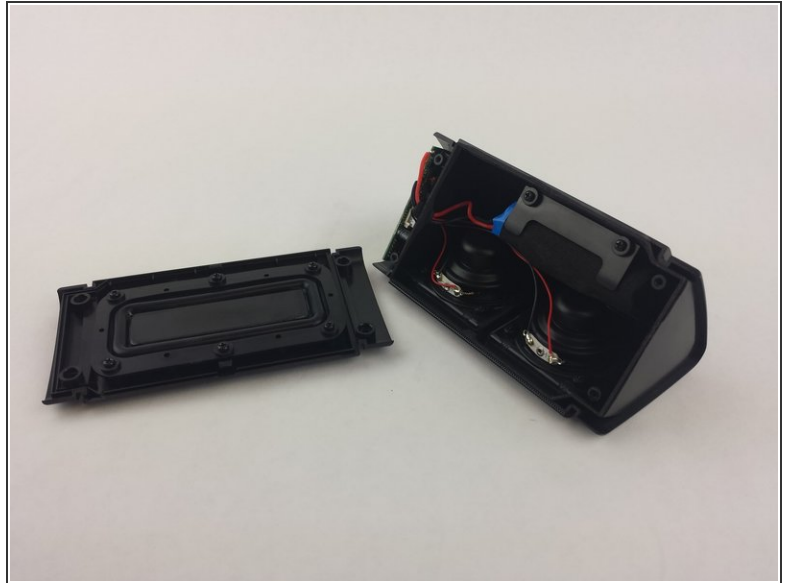
- ❗ Make sure that the OontZ Angle 3 is powered off before starting the disassembly.
- Use the plastic opening tool to remove the rubber caps from each end of the speaker.

Step 2



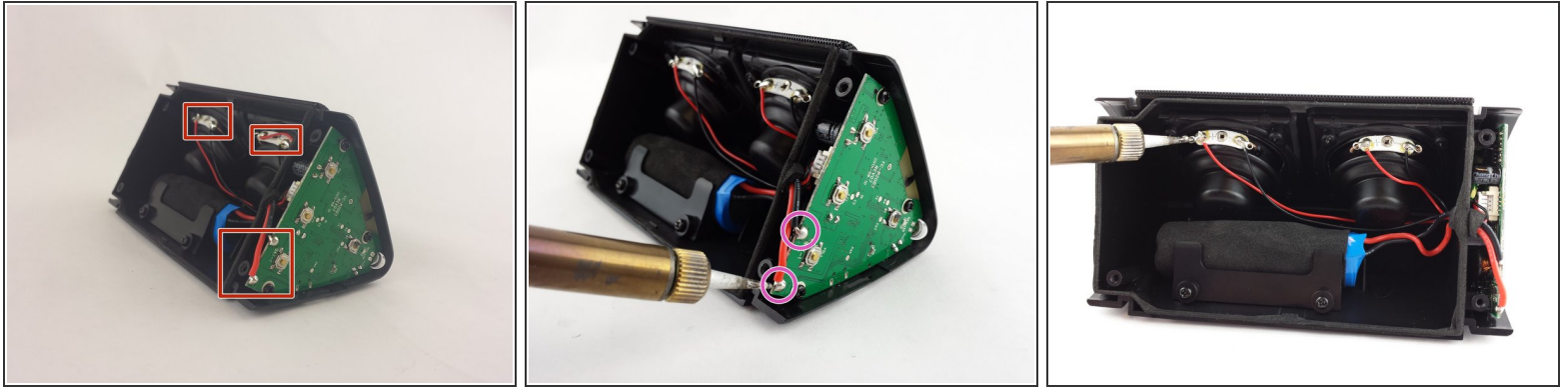
- Remove four (4) 11.7 mm Phillips #0 screws from each side at the bottom of the speaker.

Step 3



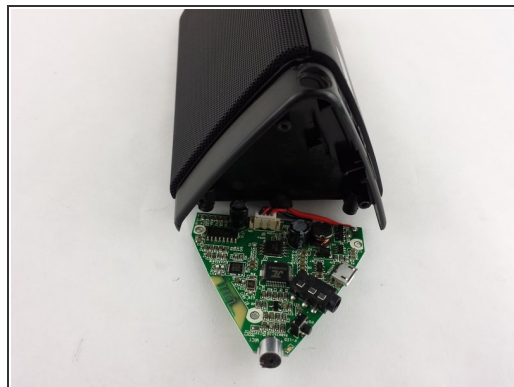
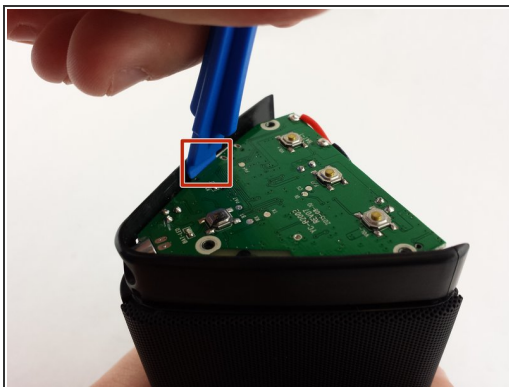
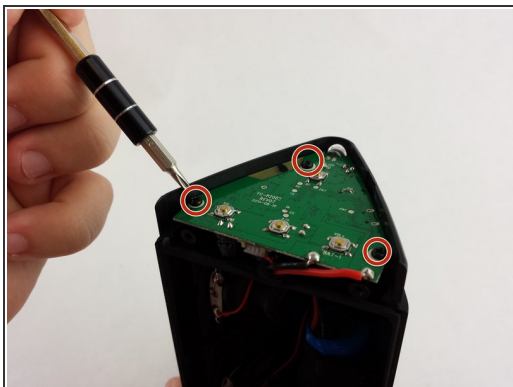
- Use the plastic opening tool on one of the corners to separate the bottom piece from the speaker, and then remove the piece.

Step 4 — Motherboard



- Locate the soldering connections for the battery on the motherboard and the wires for the speakers.
 - Use the soldering iron to disconnect the battery wires from the motherboard.
 - Use the soldering iron to disconnect the speaker wires from the motherboard.
- ⚠ When reconnecting the battery and speakers to the new motherboard, be careful to make the connections to the correct nodes as well as establish a complete connection, as the speakers could break with an incorrect connection and the battery risks overheating or erupting in flames if corrected incorrectly or poorly.

Step 5



- Remove the three (3) 3.6mm screws using a Phillips #0 screwdriver.
- Use the plastic opening tool about midway down one side of the motherboard to pry it out of the casing.
- Remove the faulty motherboard.

To reassemble your device, follow these instructions in reverse order.