



Canon Vixia HF R600 LCD screen Replacement

Replace a cracked or dead LCD screen to bring the display back.

Written By: Brian Luna



INTRODUCTION

This guide will help you replace an LCD screen that is cracked, broken , or otherwise malfunctioning. Repair is fairly easy to do. One must be mindful of the many small screws that need to be removed to access the screen.



TOOLS:

- [Phillips #00 Screwdriver](#) (1)
 - [iFixit Opening Tools](#) (1)
-

Step 1 — Handstrap



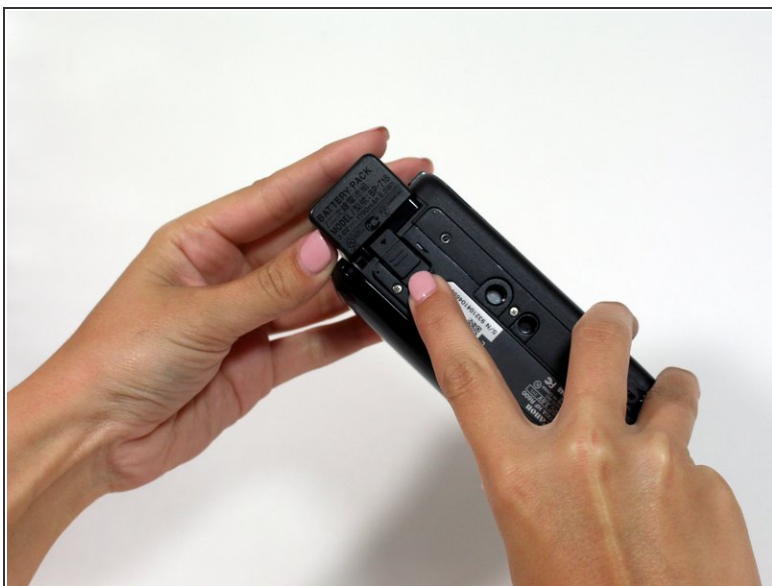
- Pull up the Velcro strap starting from the front of the camera and working your way towards the back.
- ⓘ If you are adjusting the hand-strap, tighten or loosen the Velcro strap accordingly and reattach it.
- To remove the hand-strap, pull the Velcro strip through the leather pad.

Step 2



- Remove the strap from the camera body.

Step 3 — Battery



- Press in the battery release tab located on the bottom of the camera.
- Slide the battery out from the body.

Step 4 — Casing



- Start by removing the two 6mm Phillips #00 screws located on the right side of the camera.
- Remove four more 6mm Phillips #00 screws found on the bottom of the camera.

Step 5



- Open the display screen and remove the three 5mm Phillips #00 screws.
- Look to the swivel point for the screen to find the last two 5mm Phillips #00 screws that must be removed.

Step 6



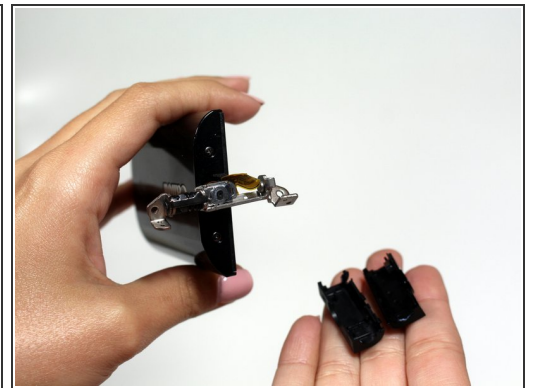
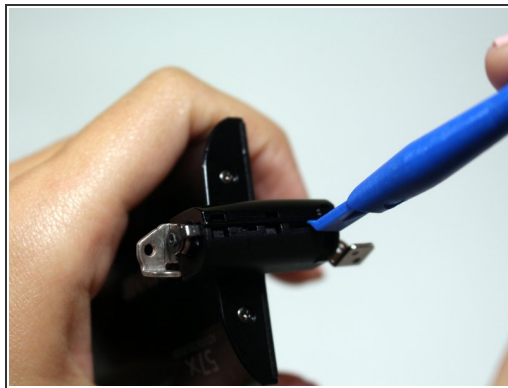
- Gently pull the plastic casing away from the camera.

Step 7 — LCD Screen



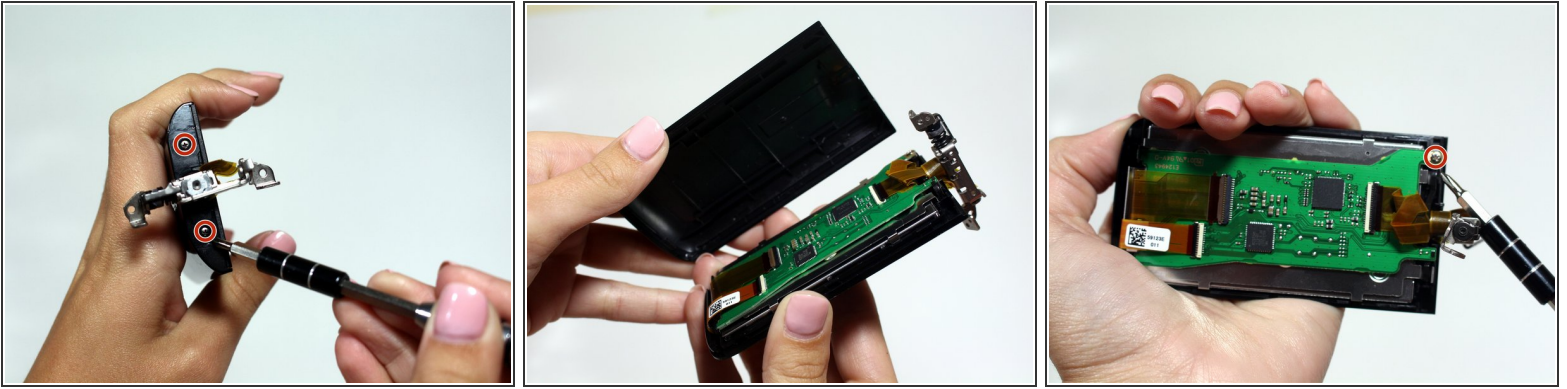
- Remove the LCD display from the camera body.

Step 8



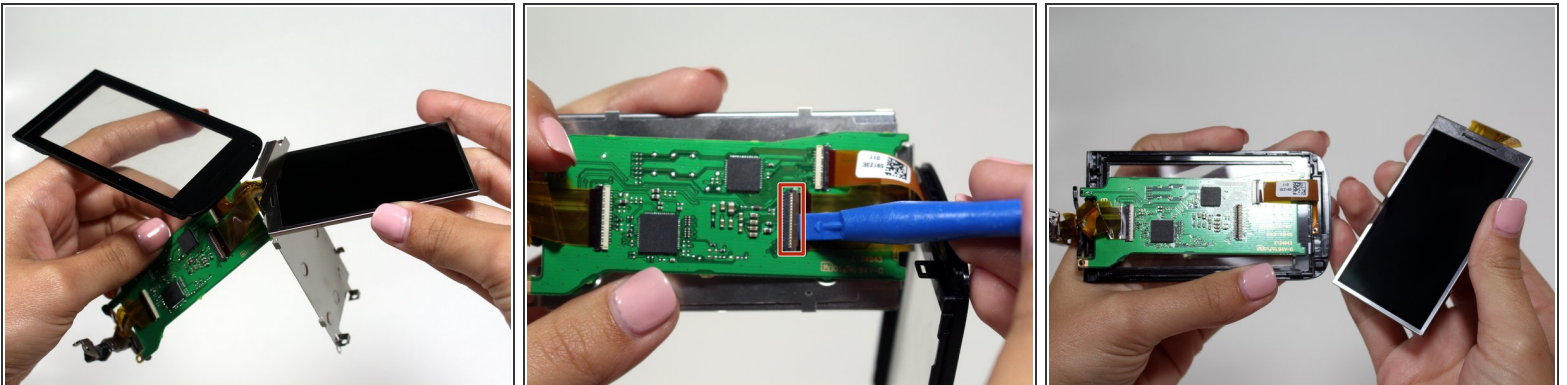
- Rotate the display hinge to reveal two 4mm Phillips #00 screws.
- Before removing, use the plastic opening tool to pry apart the plastic hinge cover.
- Remove the cover.

Step 9



- Remove the two 4mm Phillips #00 screws.
- Pull the LCD display back cover to reveal the motherboard covering the screen.
- Remove one more 4mm Phillips #00 screw.

Step 10



- Pull the screen protector away from the LCD display.
- Use a plastic opening tool to lift the ribbon connector tab.
- The LCD display can now be replaced!

To reassemble your device, follow these instructions in reverse order.