



# Dell Inspiron 11-3147 Hard Drive Replacement

Replace the hard drive with a companionable, 2.5" SATA, 7mm or smaller height drive.

Written By: William Brum



## INTRODUCTION

The hard drive may need to be replaced for numerous reasons; a larger capacity drive is needed, a new drive is desired or the old drive is faulty. This guide details how to replace the hard drive. Note that this machine supports 2.5" SATA Hard drives of



### TOOLS:

- [Phillips #0 Screwdriver](#) (1)



### PARTS:

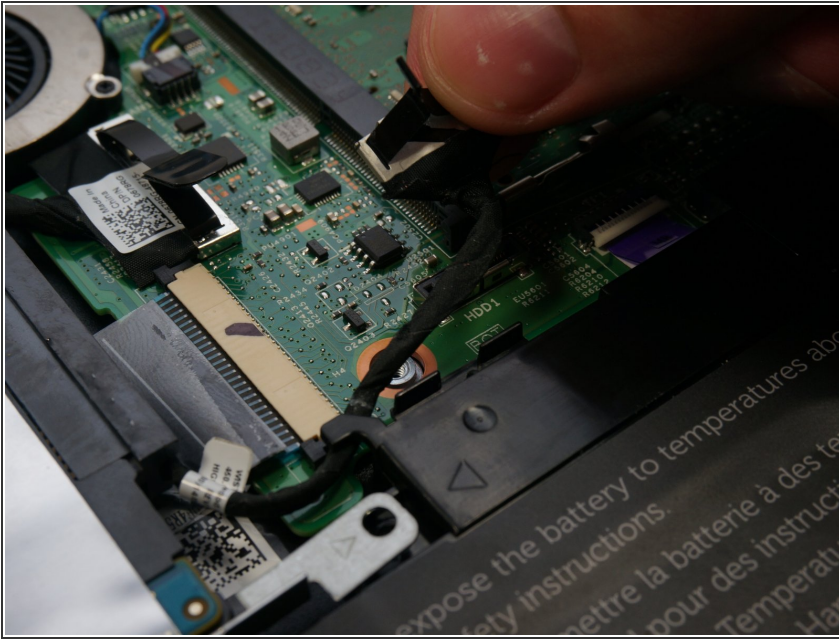
- [2.5" SATA Hard Drive](#) (1)

## Step 1 — Hard Drive



- Using a Philips Head #1 Screw Driver remove the nine .7mm screws holding the back cover in place.
- The cover is held on with small plastic tabs. Starting from the back of the machine use your hands to gently pry the back cover from the machine and release these tabs. While a tool is not necessary a plastic plunger can be used to lift the first few tabs.

## Step 2



- Using the tab on the cables connector with your hand unplug the Hard Drive connection cable and remove it from the cable track on the battery.

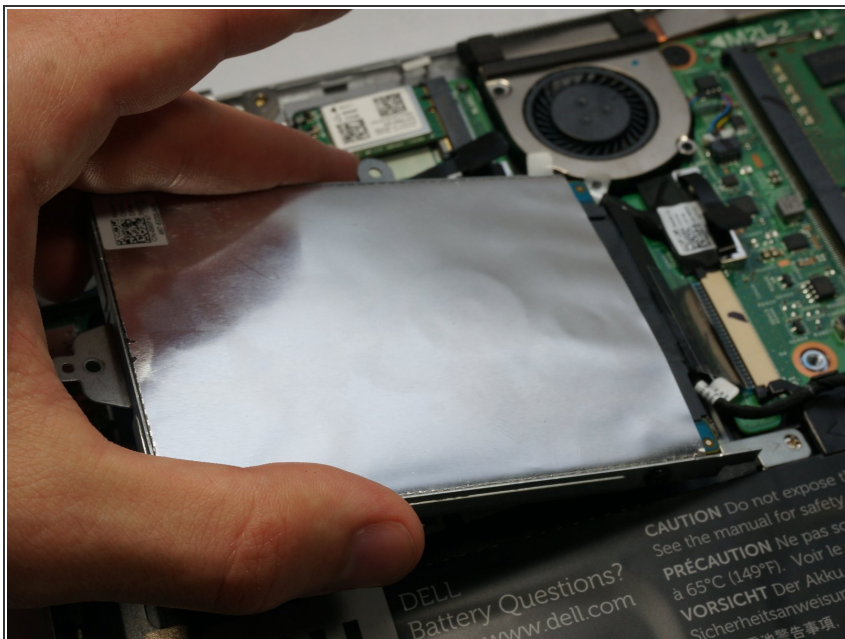
## Step 3



- Pull back the sticker covering the first screw on the hard drive chaises.
- Using a Philips Head #0 screwdriver remove the three screws holding the drive in place.

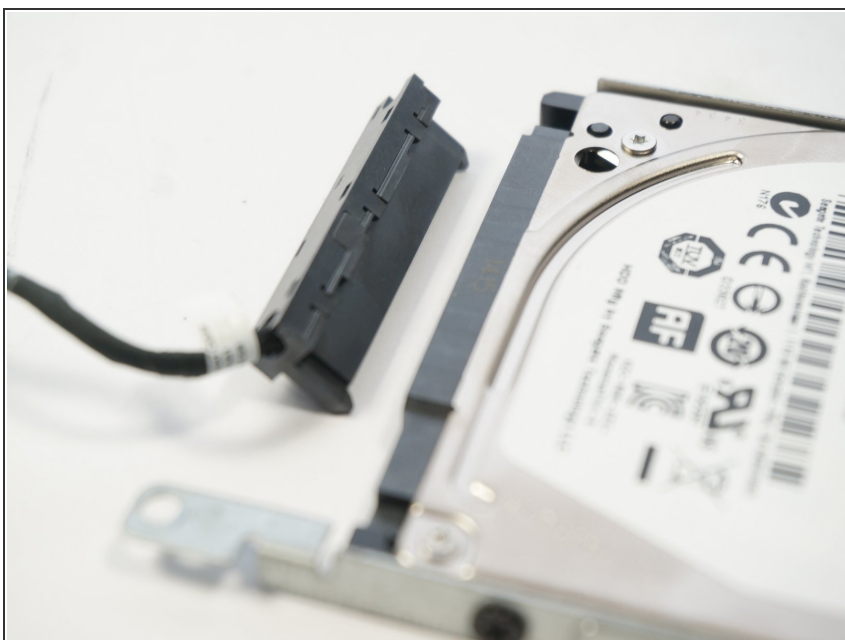


## Step 4



- Lift the hard drive from the left side as depicted and remove.

## Step 5



- Unplug the adapter cable from the drive. No tool is required for this step.

## Step 6



- Using a Philips Head #1 Screwdriver remove the four screws holding the hard drive to the chassis.
- Remove the drive from the chassis. Care that the drive does not fall out once all the screws have been removed.

To reassemble your device, follow these instructions in reverse order.