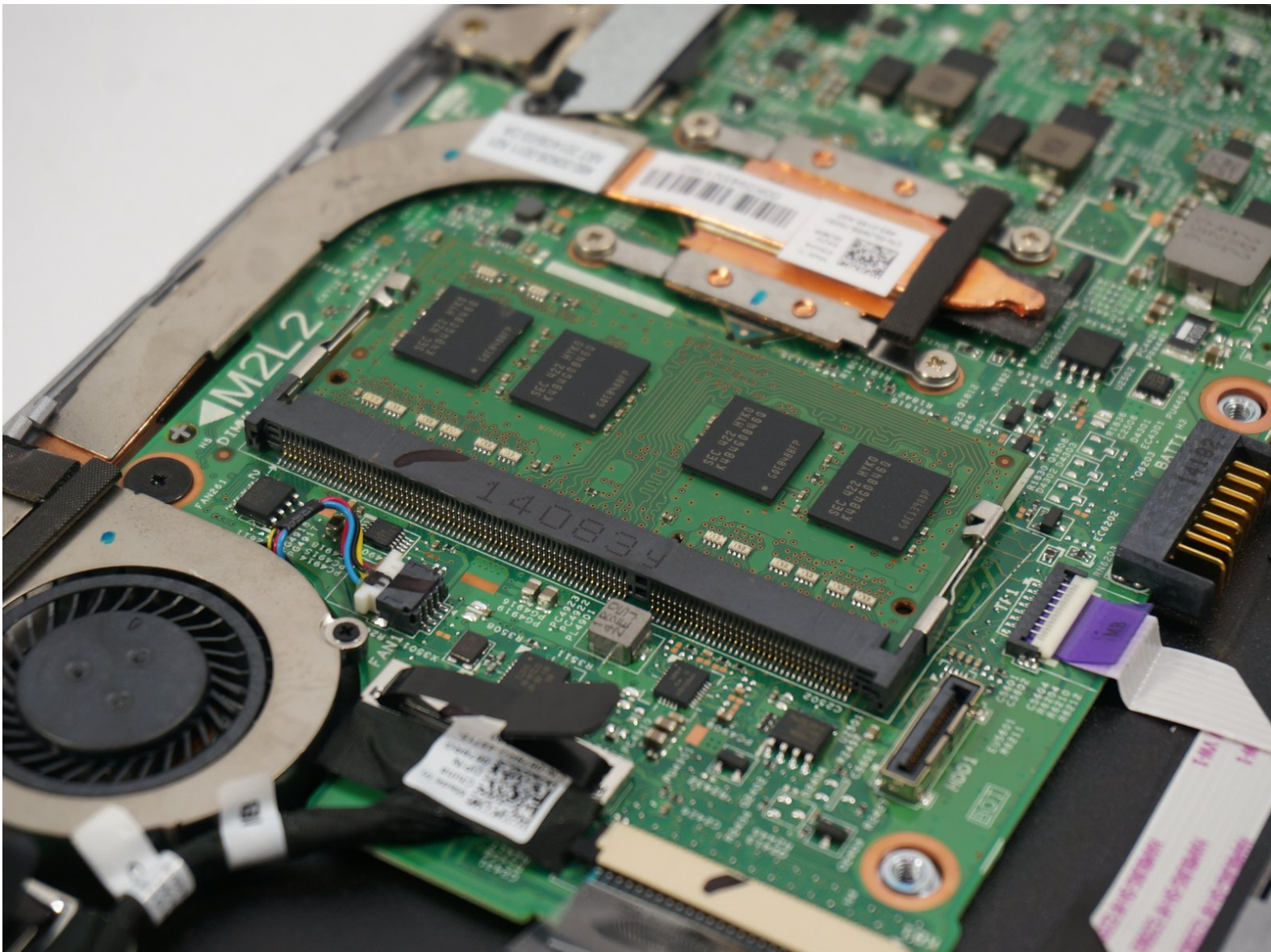




Dell Inspiron 11-3147 RAM Replacement

Replace the RAM

Written By: William Brum



INTRODUCTION

This guide provides the necessary steps involved with Replacing broken or failing RAM. The only tool needed is a #1 Philips head screw driver for the removal of the back case. This is a quick and simple process as long as the guides are followed exactly as explained.



TOOLS:

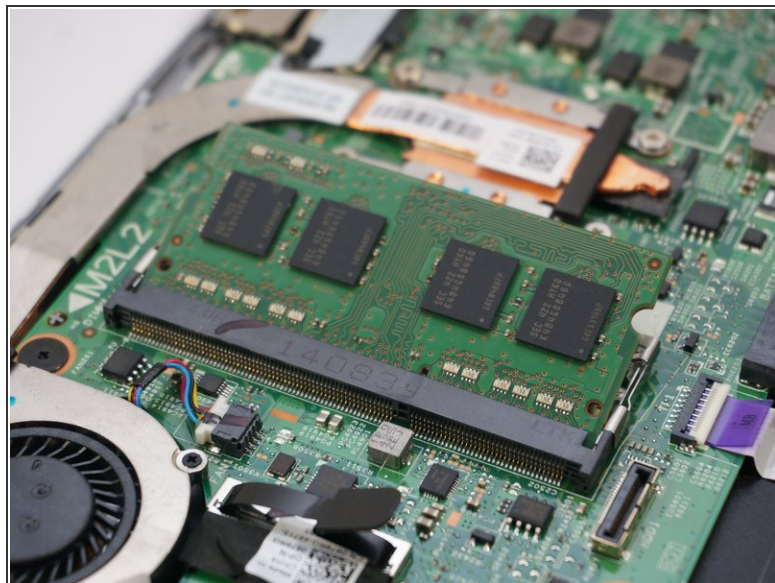
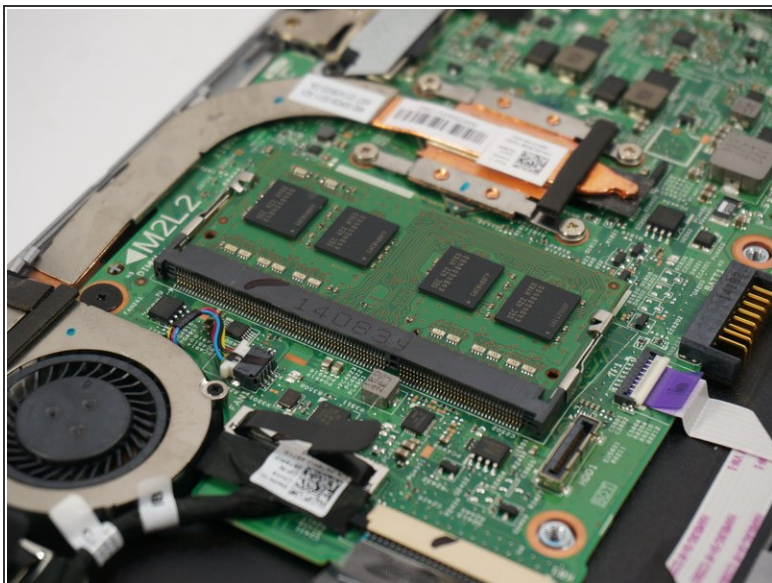
- [Phillips #0 Screwdriver](#) (1)
-

Step 1 — RAM



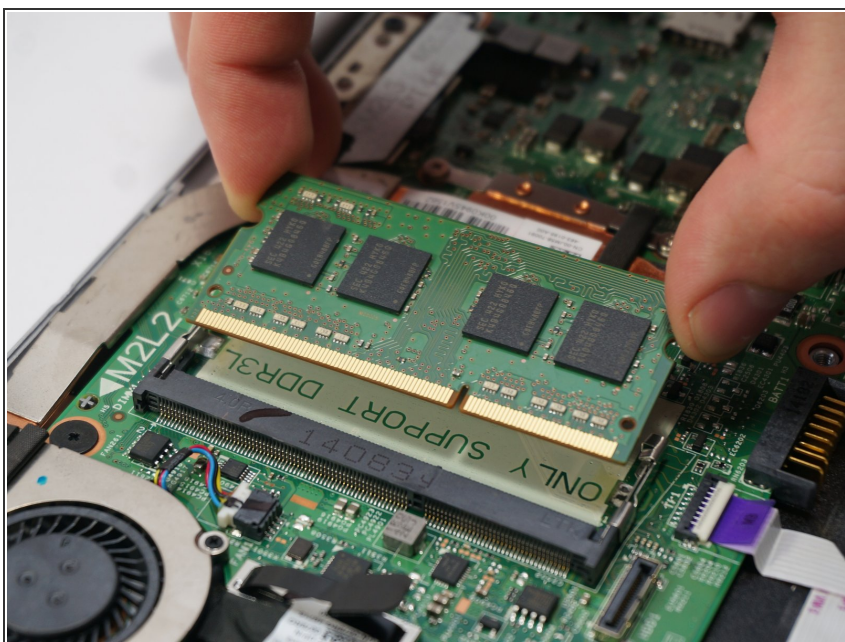
- Using a Philips Head #1 Screw Driver remove the nine .7mm screws holding the back cover in place.
- The cover is held on with small plastic tabs. Starting from the back of the machine use your hands to gently pry the back cover from the machine and release these tabs. While a tool is not necessary a plastic plunger can be used to lift the first few tabs.

Step 2



- Place finger nails on both of the little metal tabs that are located on shorter sides of the Ram board.
- Pull tabs outward and away from the Ram card. This will detach the card from the computer and allow removal.

Step 3



- Carefully remove the RAM to ensure no other components get damaged.
- Replace with a new RAM card the exact way it came out, with the the shiny metallic part of the card placed inside black insert as shown in the picture.

To reassemble your device, follow these instructions in reverse order.