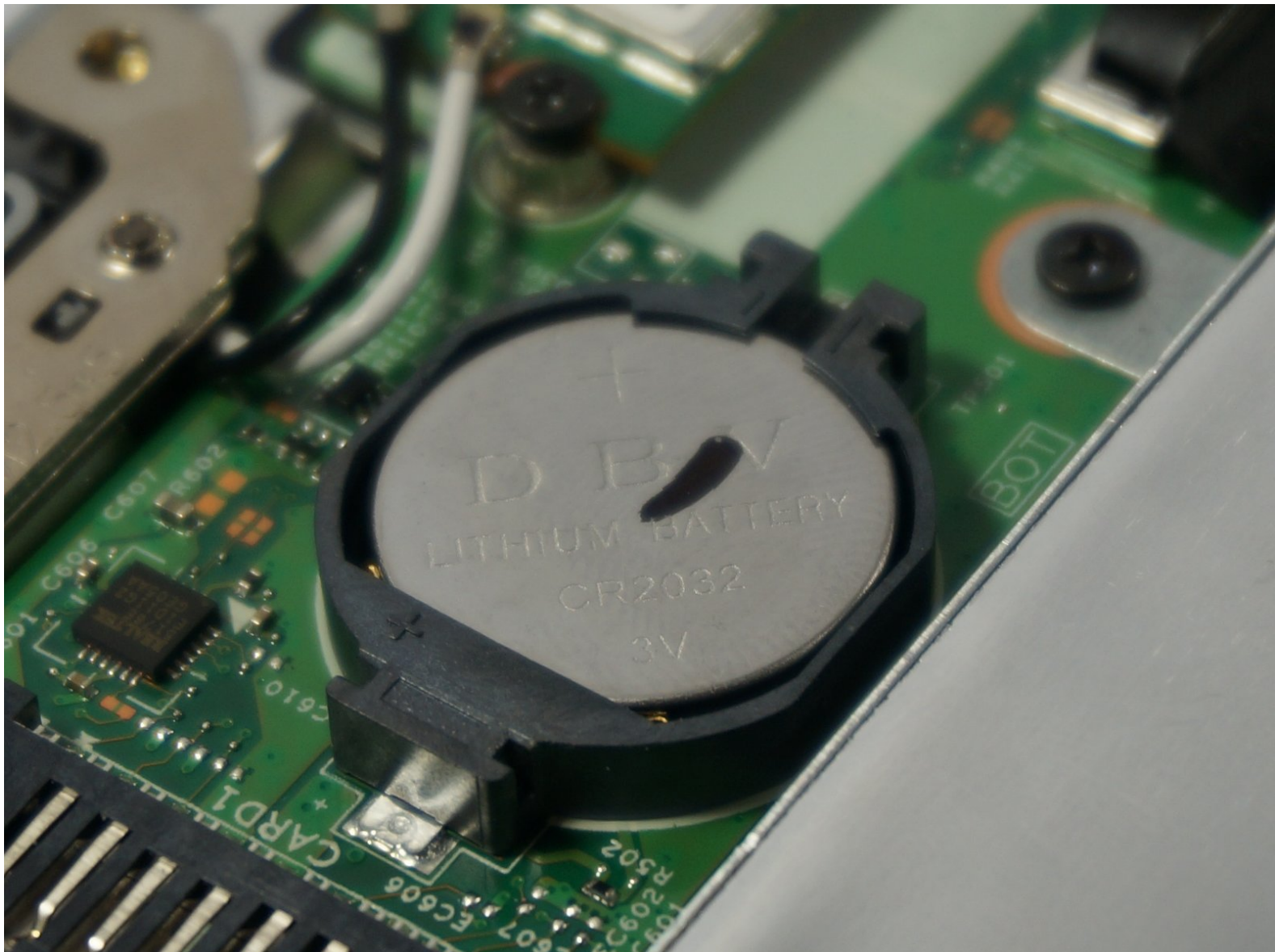




Dell Inspiron 11-3147 CMOS Battery Replacement

This guide will show one how to replace the small CMOS battery in the laptop.

Written By: William Brum



INTRODUCTION

Often this battery is faulty or has reached its end of life causing the laptop to no longer keep proper time. This guide outlines how to replace this battery. Ensure your device is turned off and unplugged before working on it. Use plastic tools only, as accidents with metal tools can cause fires.



TOOLS:

- [Phillips #0 Screwdriver](#) (1)
- [Phillips #1 Screwdriver](#) (1)
- [Spudger](#) (1)



PARTS:

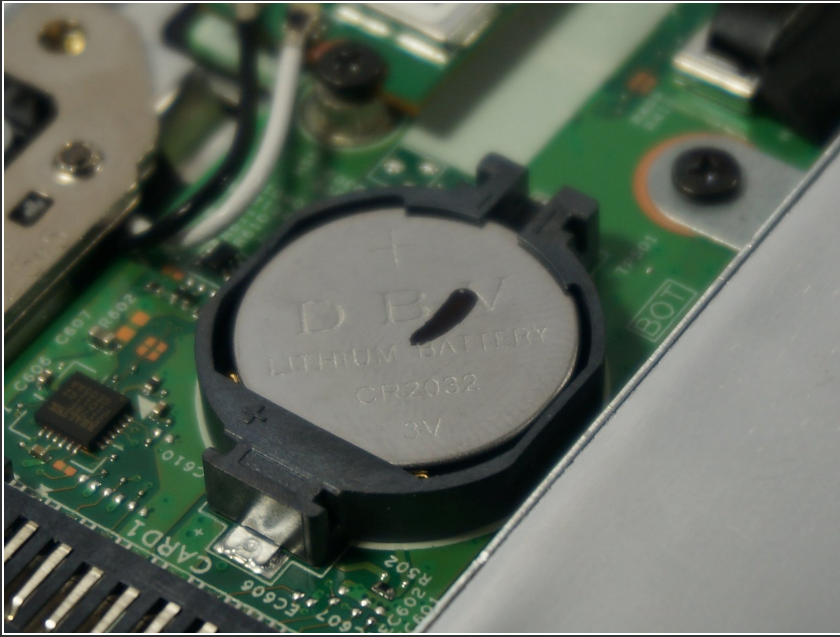
- [Button Cell Battery Selector](#) (1)

Step 1 — CMOS Battery



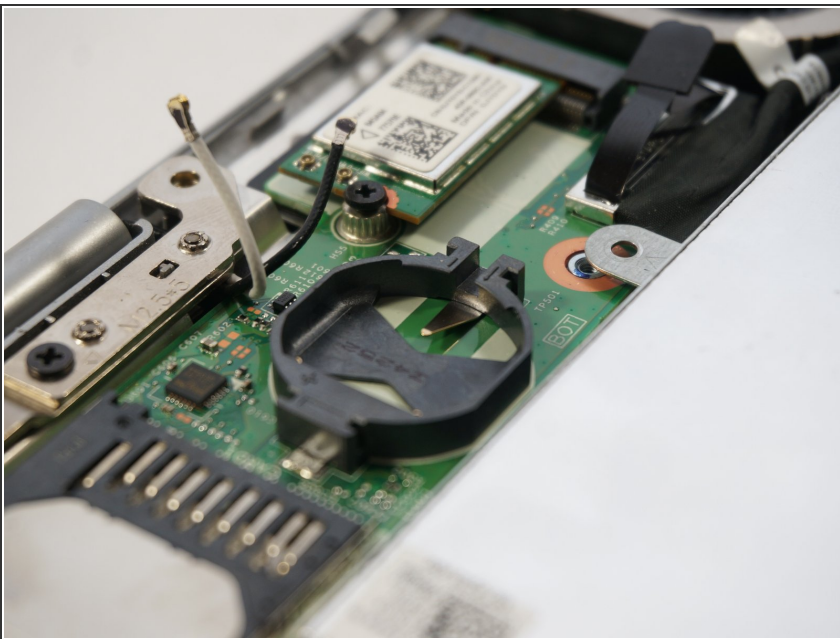
- Using a plastic Philips Head #1 Screw Driver, remove the nine 7mm screws holding the back cover in place.
- The cover is held on with small plastic tabs. Starting from the back of the machine use your hands to gently pry the back cover from the machine and release these tabs. While a tool is not necessary a plastic spudger can be used to lift the first few tabs.

Step 2



- Using a plastic spudger, gently press under the battery to lift it up and out.

Step 3



- Remove the CMOS Battery

To reassemble your device, follow these instructions in reverse order.