



Nabi 2S Disassembly

Use this guide to replace the back case for the Nabi 2S if the back case is broken or to access the battery.

Written By: Riana Ramirez



INTRODUCTION

This guide will aid you in the process of removing the back case of the device. This is useful in replacing a broken back case or to access the battery in the device to replace that as well.



TOOLS:

- [Phillips #0 Screwdriver](#) (1)
 - [iFixit Opening Tools](#) (1)
-

Step 1 — Nabi 2S Disassembly



- Remove the red rubber case from the device.

Step 2



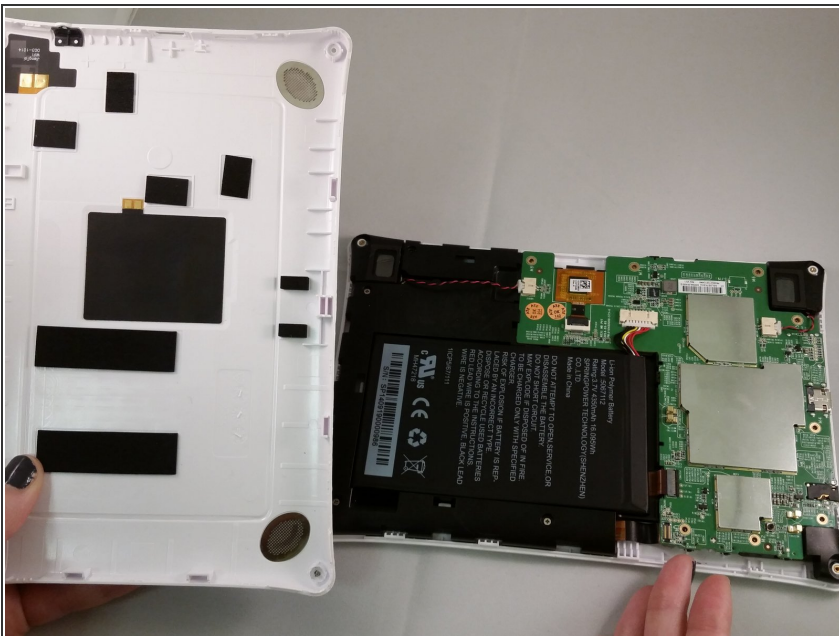
- Make sure the screen is facing away from you and the back cover is facing you.
- Using a Phillips #0 Screwdriver, unscrew the 3mm screws counter-clockwise in each corner of the plastic back cover. It will be a total of four screws. The smaller case on the back cover is attached to the main cover so it will not need to be removed.

Step 3



- Using the plastic opening tool, remove the case.
- ❗ Removing the case will take a bit of effort and force. We recommend using two hands and if possible another person to help. It will require some gusto.
- ❗ It is helpful to pry at the corners first to loosen the case.

Step 4



- After the back case is loosened, remove it from the device to change or access the battery.

To reassemble your device, follow these instructions in reverse order.