



Dell Inspiron 15 3541 Hard Drive Replacement

The hard drive can be removed simply and changed out for one with more capacity, or better performance.

Written By: Edward Pacheco



INTRODUCTION

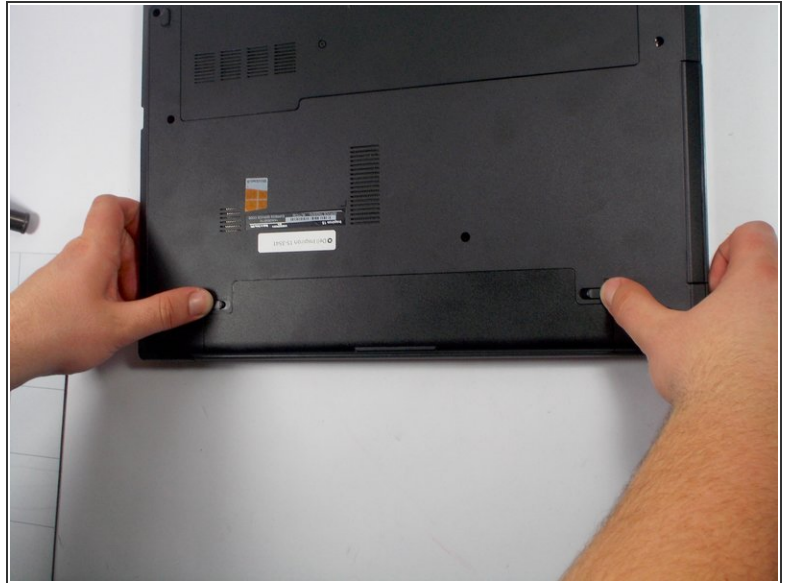
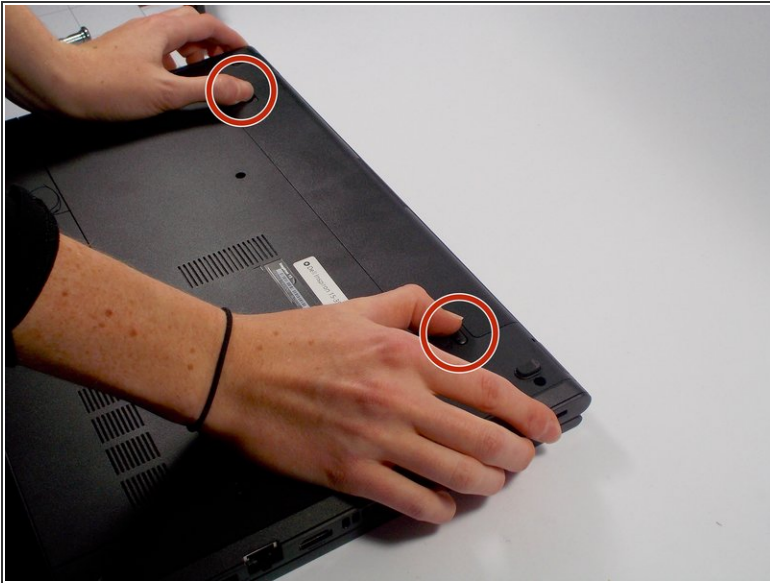
In order to replace your hard drive, first make sure your laptop is completely powered off and detached from the power source. Also, make sure your replacement hard drive is 7mm in height, as the traditional 9.5 mm will not fit into this laptop.



TOOLS:

- [Phillips #0 Screwdriver](#) (1)
 - [iFixit Opening Tools](#) (1)
-

Step 1 — Battery




 Make sure your laptop is powered off completely and is not connected to the charger.

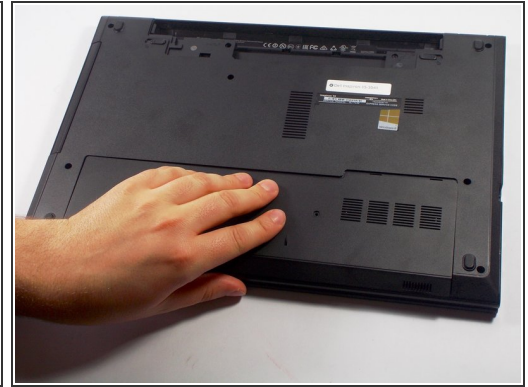
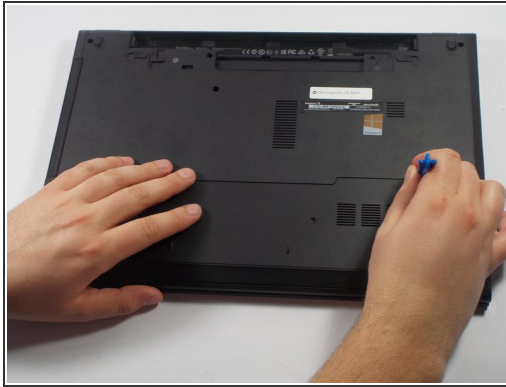
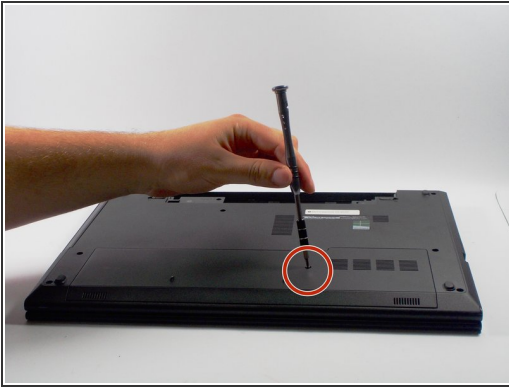
- Close the laptop and place it so that the back of the screen is lying flat on your work surface.
- Slide both of the battery-release latches towards the outer edges of the laptop to unlock the battery flap.

Step 2



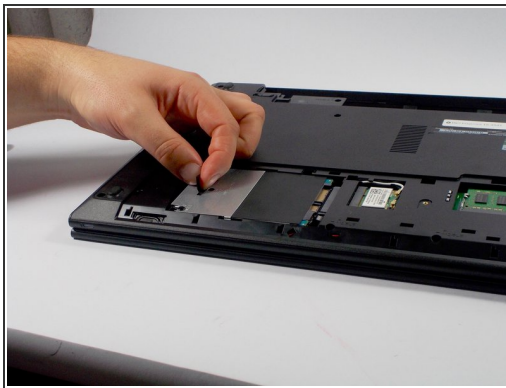
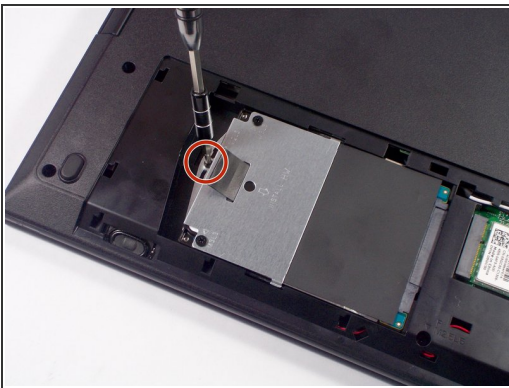
- Lift the battery at an angle using your fingertips and remove it from the laptop.
-  Press and hold the power button for 5 seconds. This ensures that any remaining power will drain out of the computer.

Step 3 — Hard Drive



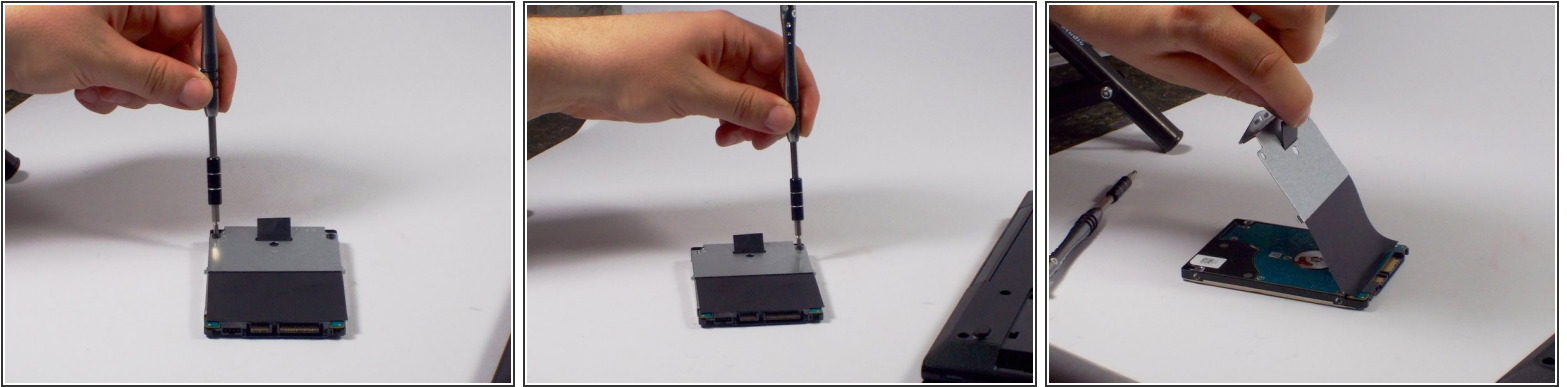
- i** When choosing a replacement hard drive, make sure you are choosing one which is 7mm in height, and not the more traditional 9.5mm laptop drive, as it will not fit given the limited space inside of the laptop.
- Using a PH0 sized screw driver, carefully remove the 4mm screw from the bottom cover.
 - Using the plastic opening tool carefully pry open the bottom cover
 - Slide the bottom cover towards you and remove it from the laptop base. Put the cover aside.

Step 4



- Remove the 1 screw 4mm long on the left that is holding in the hard drive using a PH0 screwdriver.
- Carefully pull on the tab on the hard drive to slide it out away from the connector.
- Lift up and remove the hard drive from the computer.

Step 5



- i** You can skip this step if you are not replacing the Hard Drive, but still need to remove it to replace a different part.
- Remove the two screws (3mm long) using a PH0 screwdriver that are holding the hard drive into the mounting bracket.
 - Pull up on the black Mylar sheet and remove it from the existing hard drive, it has some adhesive, but will simply pull off with just a small amount of force.

To reassemble your device, follow these instructions in reverse order.