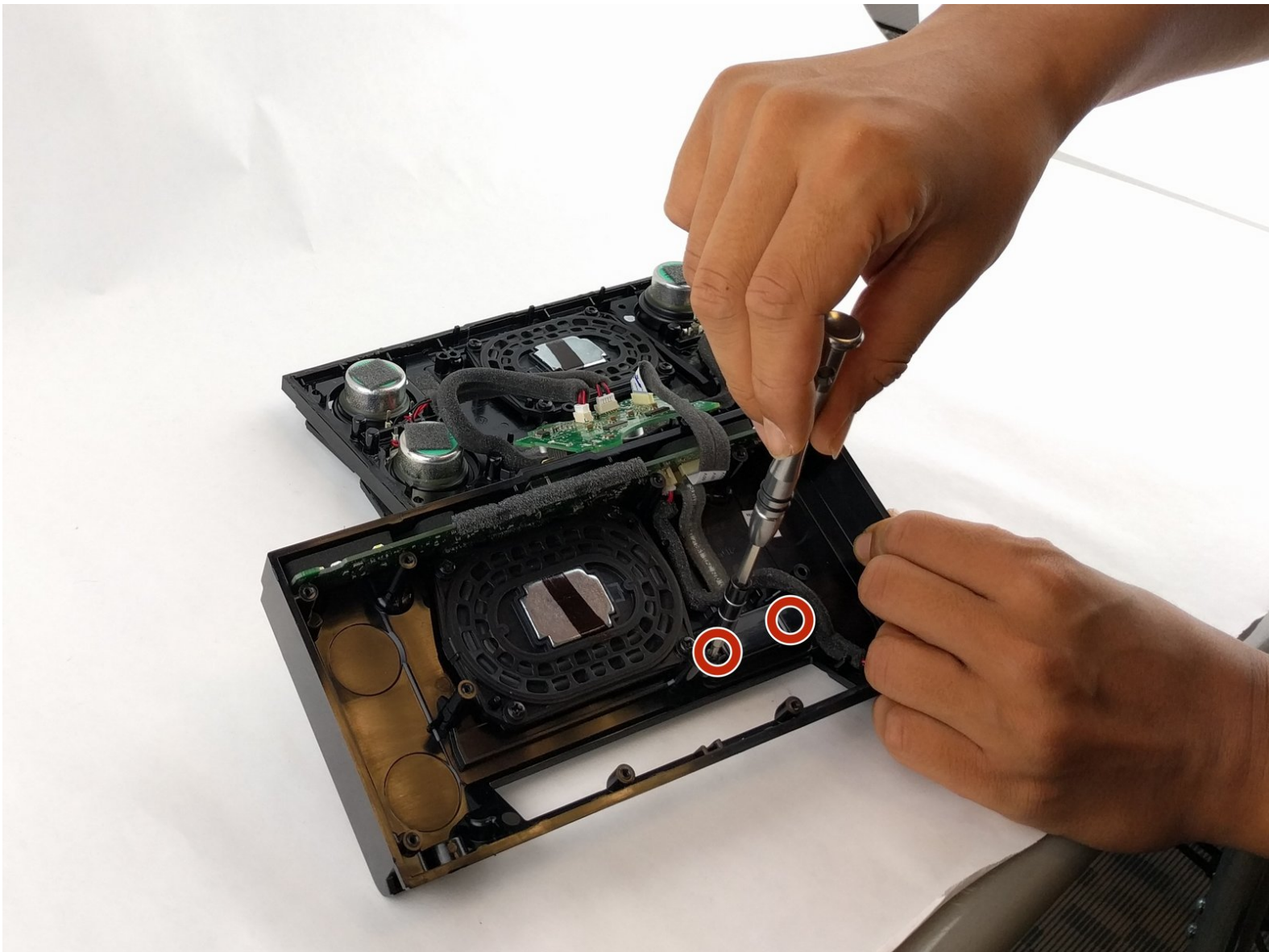




Bose SoundLink III Charging Port Replacement

Replace the charging port on your Bose SoundLink III.

Written By: Dakota Sanders



INTRODUCTION

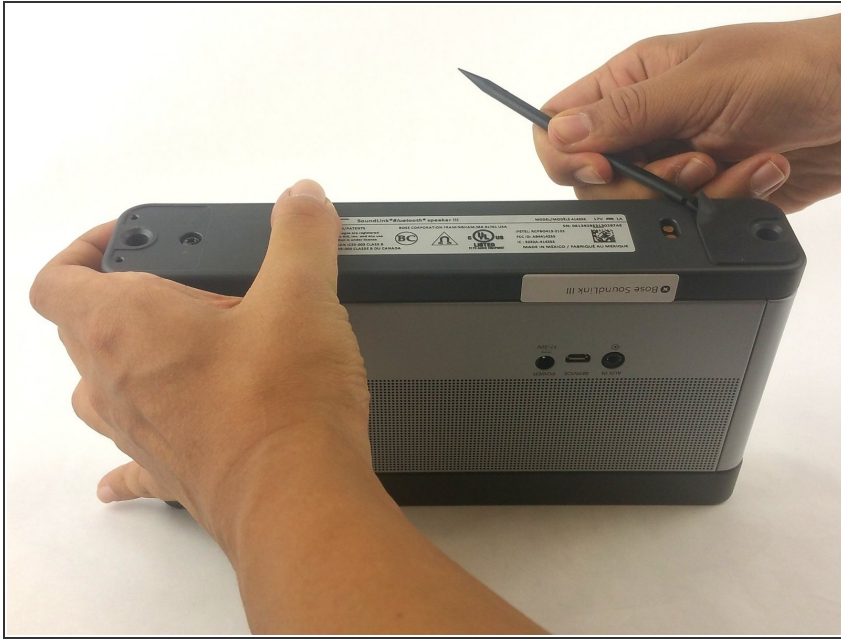
If you notice any major damage to your charging port that prevents you from charging your device, you may need to replace your charging port.



TOOLS:

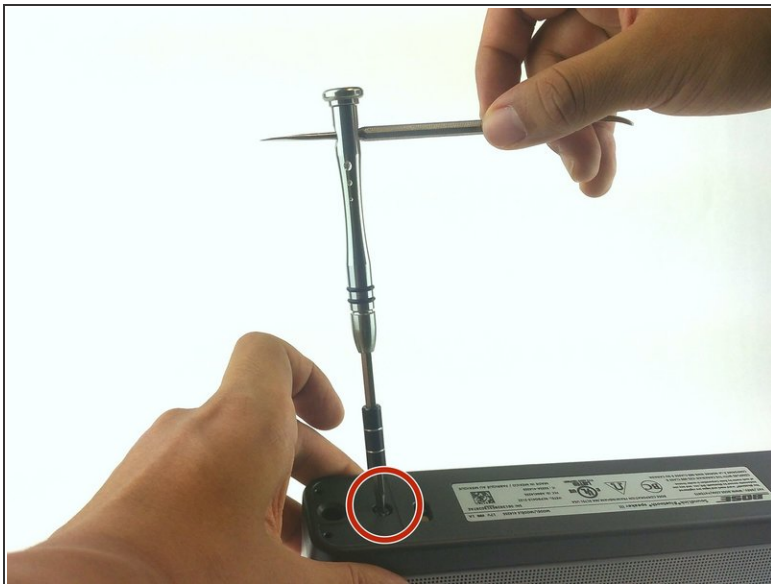
- [Spudger](#) (1)
 - [Metal Spudger](#) (1)
 - [TR10 Torx Security Screwdriver](#) (1)
 - [Phillips #2 Screwdriver](#) (1)
-

Step 1 — Battery



- Use a spudger to pry the rubber pads off of the bottom panel of the SoundLink.
- ★ The rubber pads should have enough adhesive to stick when you reassemble them at the end. If not, however, you may need your own adhesive.

Step 2



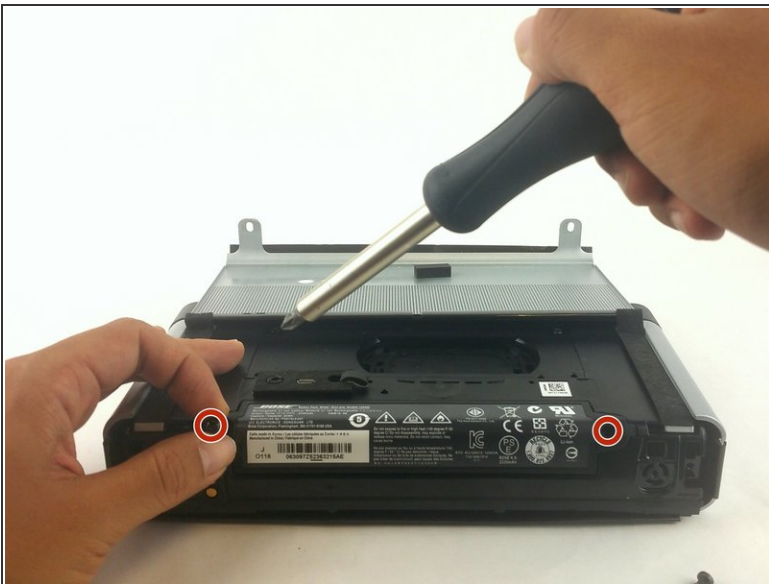
- Remove the two 12.5 mm screws using a Phillips #2 screwdriver.
- ⓘ These screws may be difficult to remove. If necessary, use a lever for extra torque.
- Remove the bottom panel.

Step 3



- Flip the rear panel back to allow access to the SoundLink's battery.

Step 4



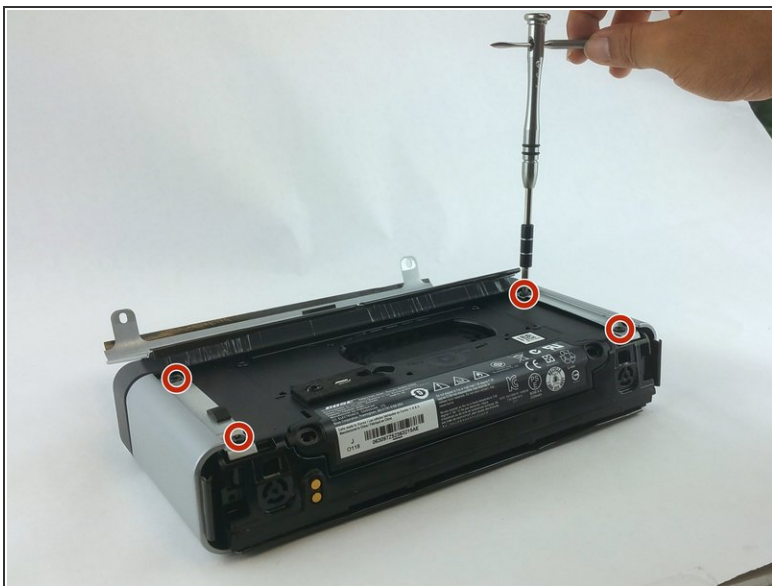
- Remove the two 12.5 mm Phillips #2 screws from the sides of the battery.

Step 5 — Motherboard



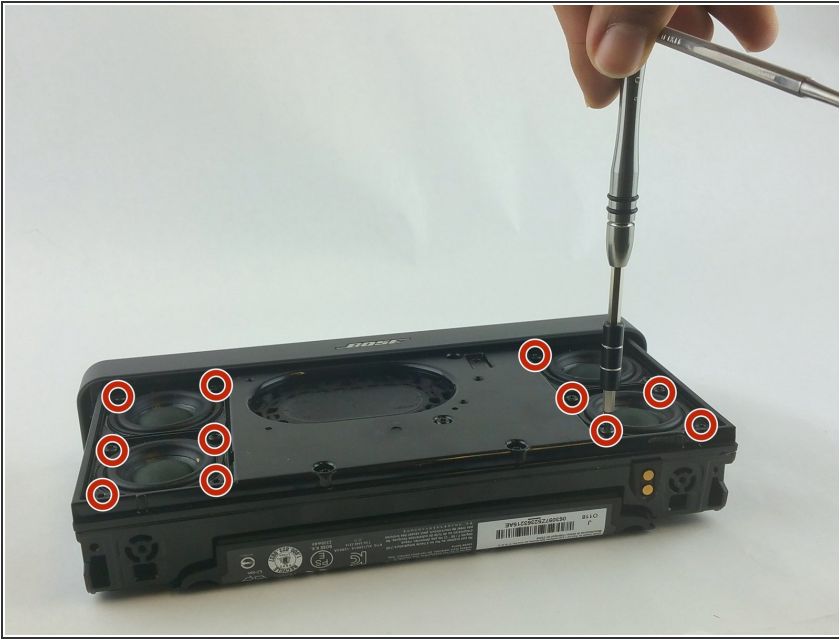
- Gently peel back the adhesive padding on either side of the inner back panel.
- ★ The adhesive for these pads is powerful, but you may require new adhesive if the original begins to fail.

Step 6



- Remove the four 12.5 mm Phillips #2 screws mounting the outer case.
- Slide off the outer case.

Step 7



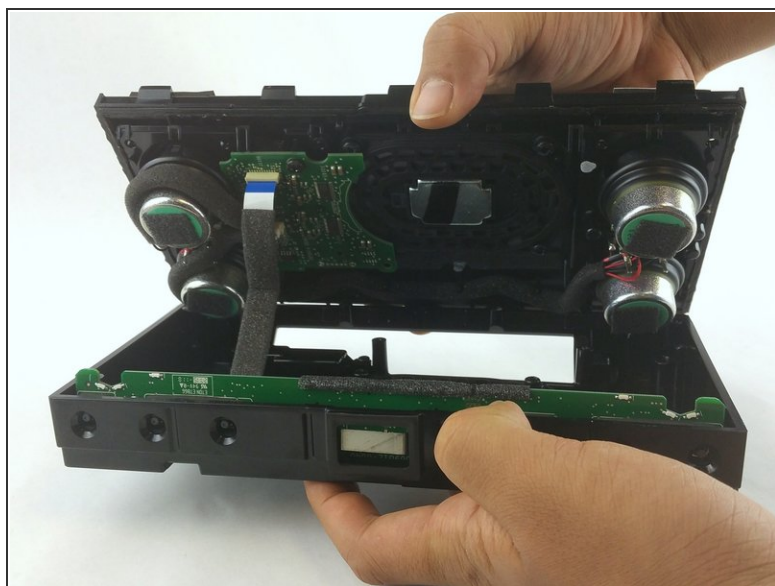
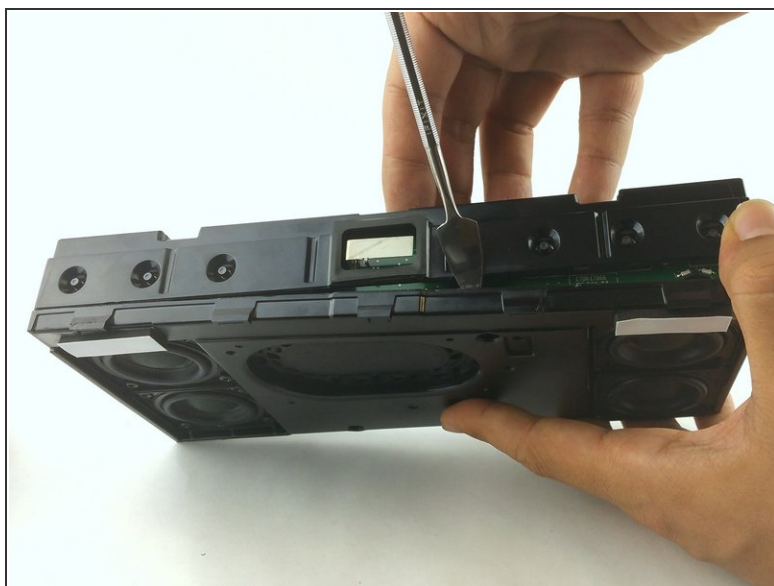
- Remove four screws from each of the four speakers (16 screws total) using a Torx #10 screwdriver.
- ⓘ All screws (excluding the two middle screws on the right side) are 12.5 mm in length. The aforementioned middle screws are 21 mm.

Step 8



- Remove the two 12.5 mm screws which mount the top panel using a Phillips #2 screwdriver.
- Now you should be able to lift the top panel off.

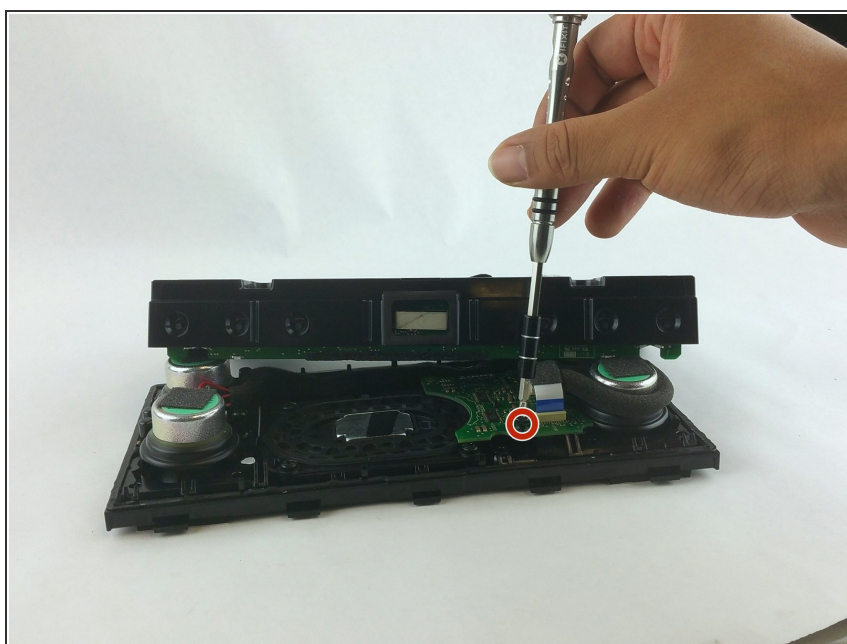
Step 9



- Use a metal spudger to pry the device apart. You must use a metal spudger because of the great force necessary to pry it apart.

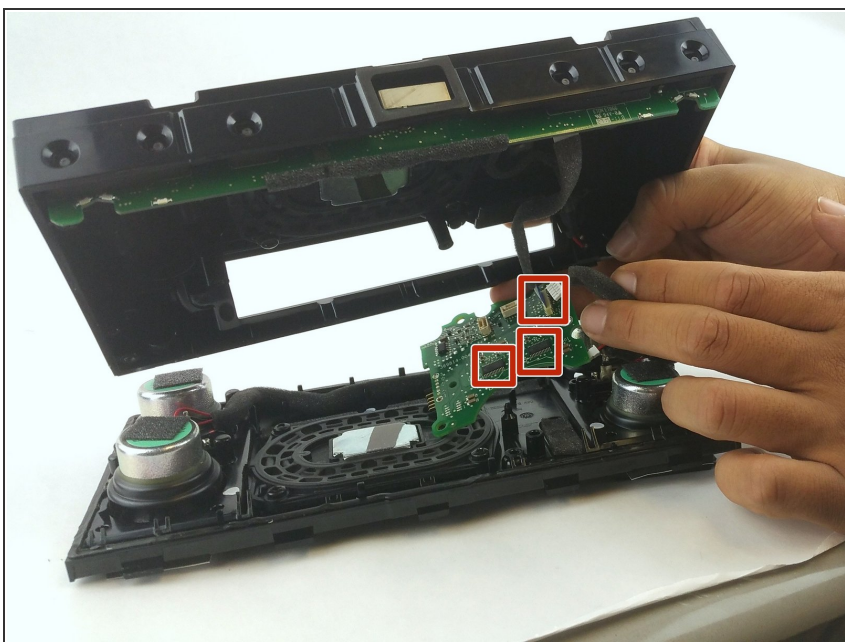
⚠ The circuitry for the buttons on the top panel may be found underneath, so use caution not to damage it.

Step 10



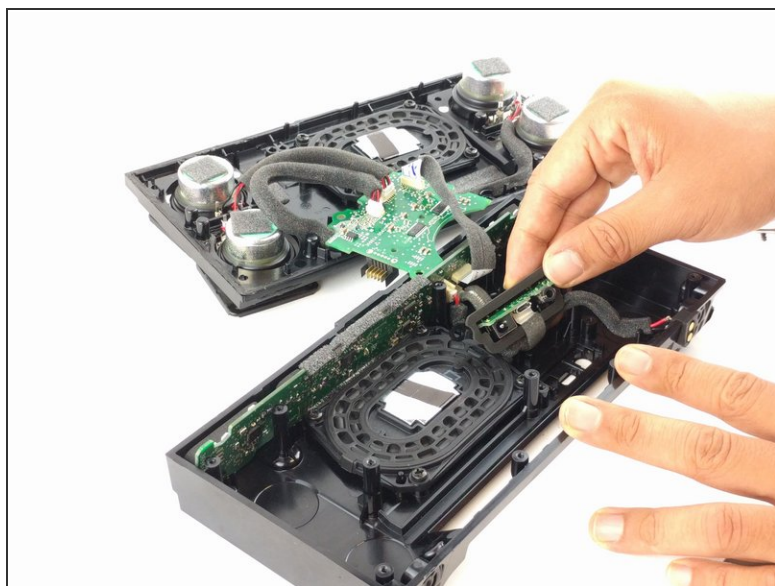
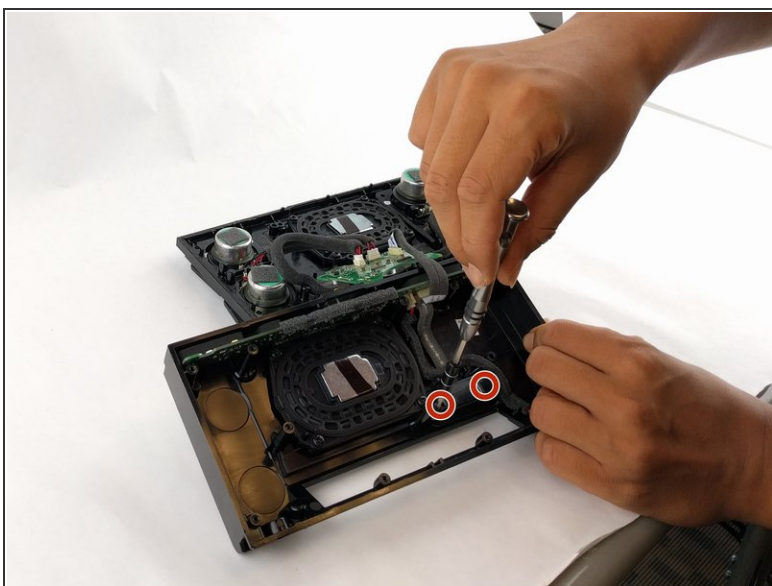
- Remove the 12.5 mm screw mounting the motherboard using a Philips #2 screwdriver.

Step 11



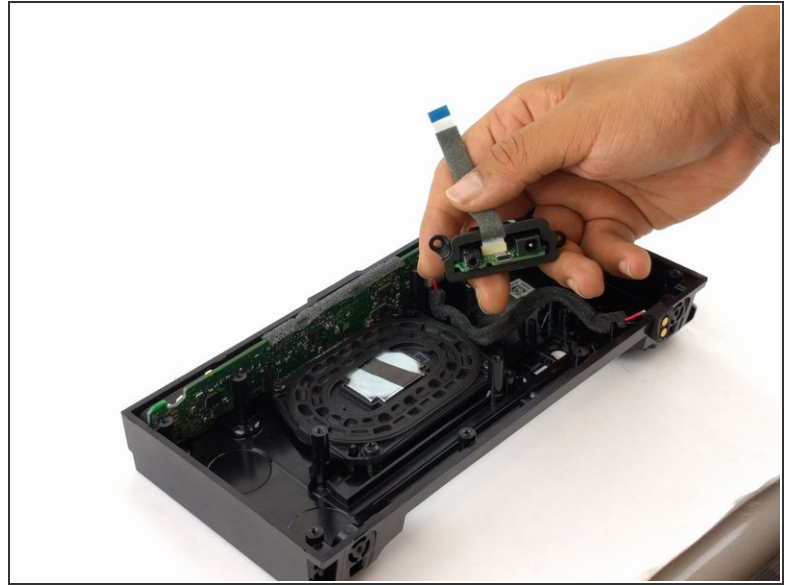
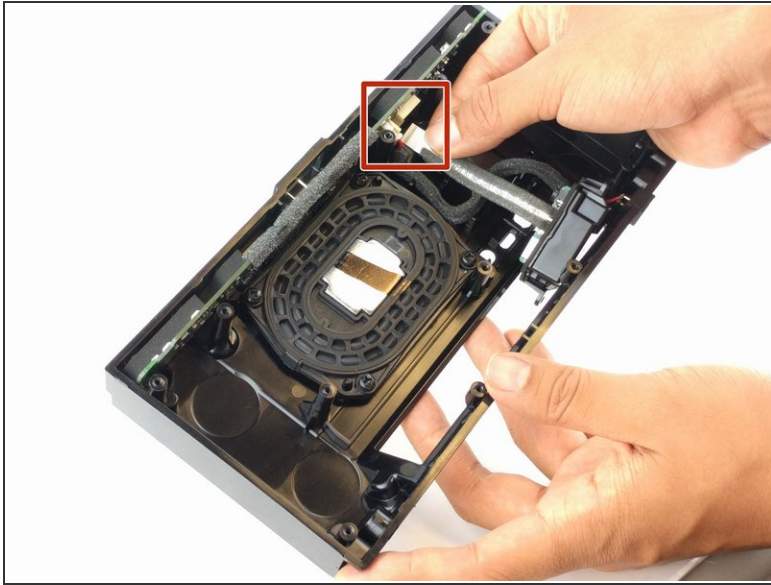
- Gently disconnect the three cables connected to the motherboard.
- Remove the motherboard from the device.

Step 12 — Charging Port



- Remove the two 12.5 mm screws on either side of the charging port using a Torx T10 screwdriver.

Step 13



- Gently unplug the cable connecting the charging port.
- Now the charging port should be fully detached and ready for replacement.

To reassemble your device, follow these instructions in reverse order.