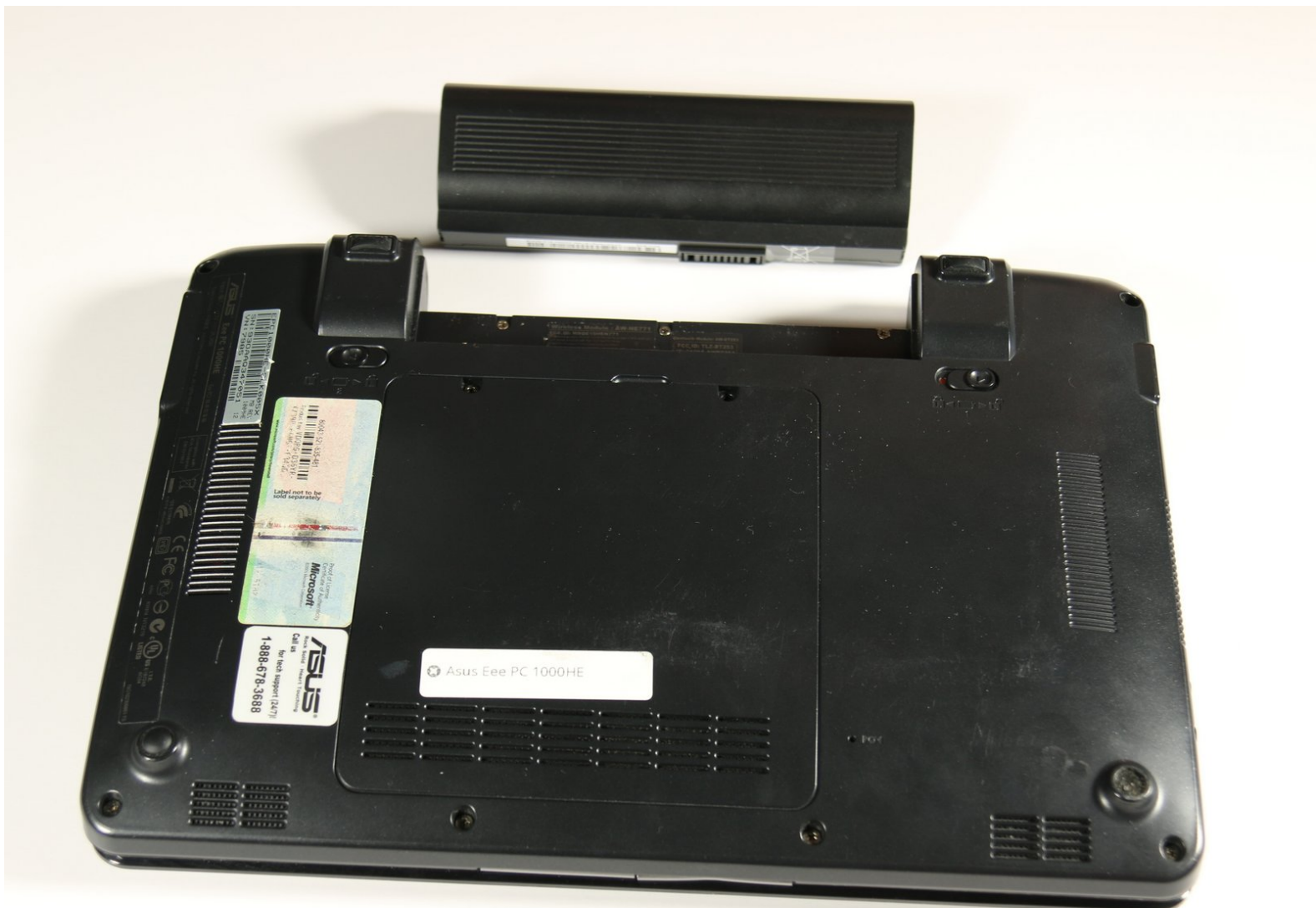




Asus Eee PC 1000HE Battery Replacement

This guide is for removing and replacing the battery of your Asus EEE PC 1000HE.

Written By: Mike Glenn



INTRODUCTION

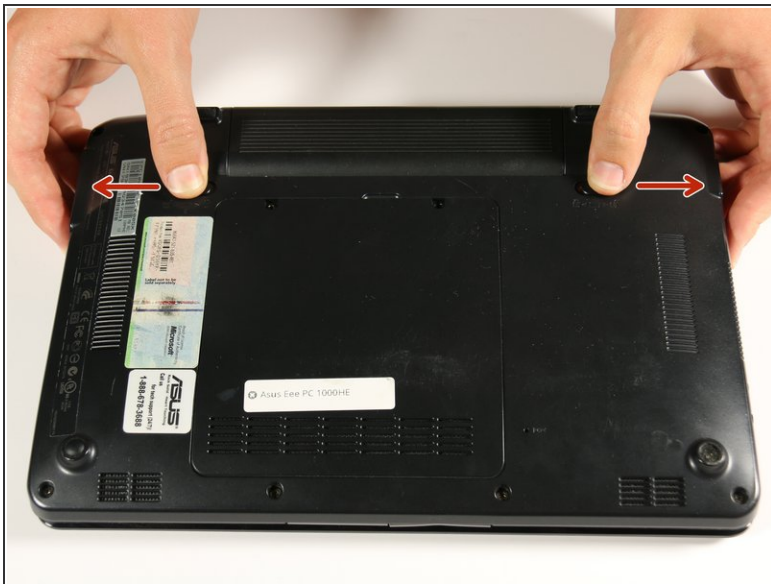
Follow this guide to replace your battery. This guide is also useful for temporarily removing your battery in order to safely work on other sections of your netbook.

Step 1 — Battery



- Lay the laptop down with the bottom facing upwards.
- Locate the two battery lock slide tabs.

Step 2



- Slide the tabs outward to unlock the battery.
- ⓘ The right tab will remain in the unlocked position while the left tab must be held.
- While holding the left tab outward, slide the battery away from you to remove it.

To reassemble your device, follow these instructions in reverse order.