



Black and Decker BDERO100 Power Cord Replacement

This guide provides information on how to remove and replace the Power Cord of the BLACK and DECKER BDERO100 5 inch sander.

Written By: Irene Zubillaga



INTRODUCTION

This guide provides information on how to remove and replace the Power Cord of the BLACK and DECKER BDERO100 5 inch sander. The tools that you will need for this process is the JIS - J1 bit driver or equivalent, the TR20 Torx Security bit driver or equivalent, the plastic spudger & the plastic opening tool.



TOOLS:

- [T20 Torx Screwdriver](#) (1)
 - [Heavy-Duty Spudger](#) (1)
 - [iFixit Opening Tools](#) (1)
 - [JIS Driver Set](#) (1)
-

Step 1 — Chassis



- Use the nylon spudger to remove the rubber ring from the filter attachment section.
- ⓘ The easiest way to do this is to place the spudger sideways and pulling out the ring.

Step 2




- Use the TR20 Torx Security bit driver to unscrew the five 18.75mm Phillips screws from the warning label side of the chassis.

Step 3



- Grab the plastic opening tool and place it on the separation line between both sides of the chassis.
- Separate both sides and open the device.

 Be careful not to lose or detach any internal parts while opening the sander.

Step 4



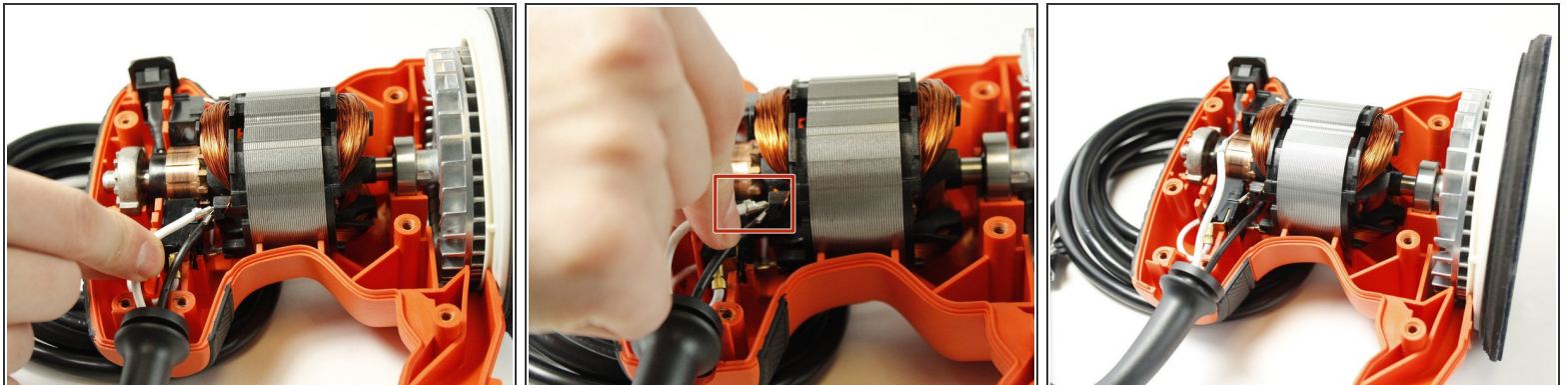
- Hold the chassis and separate it from the device.

Step 5 — Power Cord



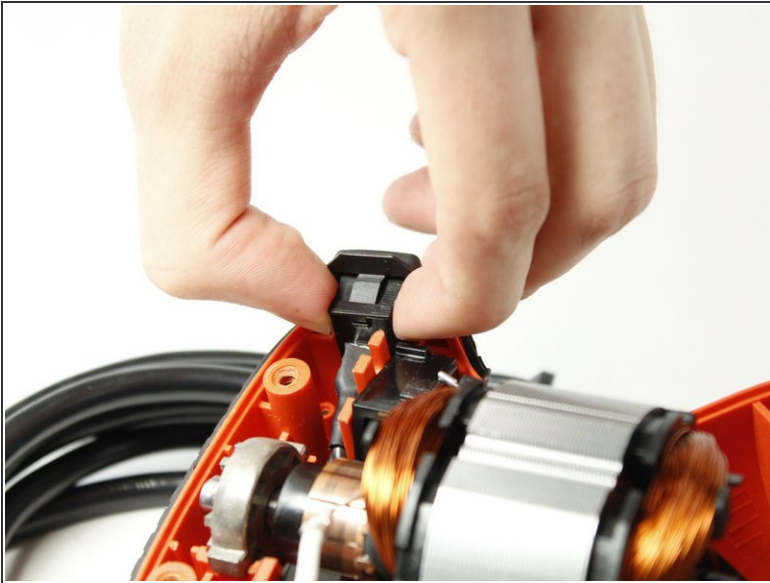
- Use the bit driver with the JIS - J1 bit to remove the two 12.5 mm phillips screws holding the cord clamp to the chassis.

Step 6



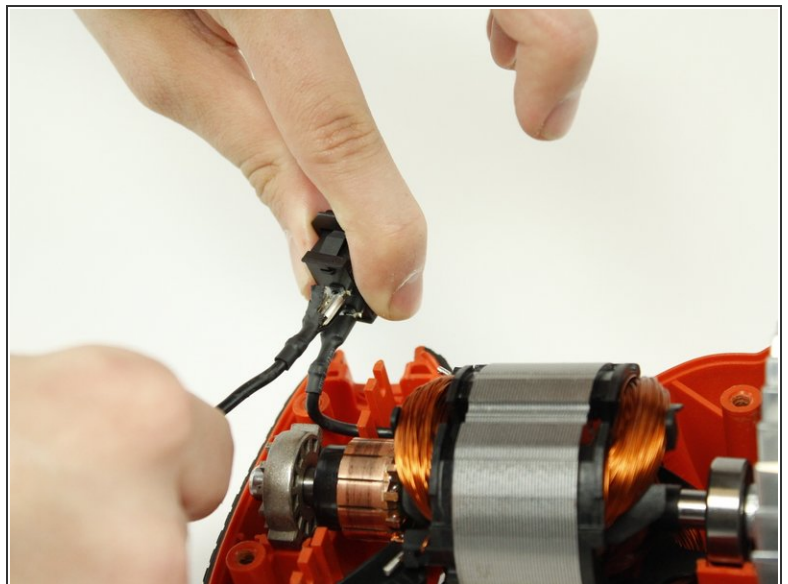
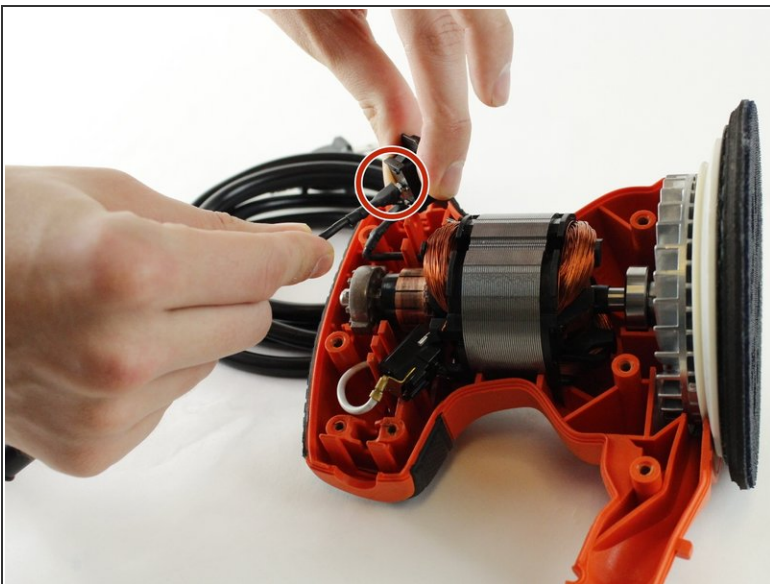
- Gently pull the white cable that connects the power cord to the motor to detach it.

Step 7



- With your hands, hold and separate the power button from the external case by pulling gently.

Step 8




- Select the cable that connects the power button to the power button.

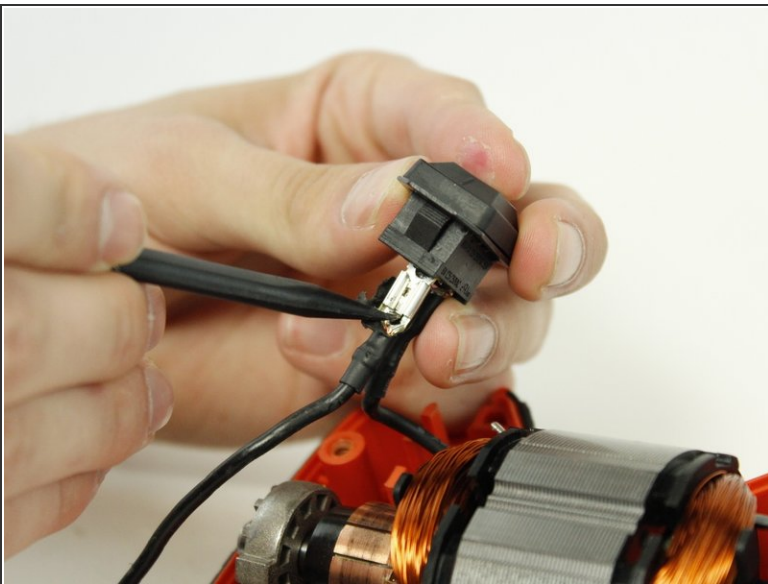
Step 9



- Expose the cable and lock system by removing the cover.

 When attaching the new power cord you will need to make sure to cover this lock system with electrical tape.

Step 10



- Push the security pin with the plastic spudger and simultaneously, pull gently on the cable to separate it from the button.

To reassemble your device, follow these instructions in reverse order.

This document was generated on 2020-11-20 07:04:53 AM (MST).

