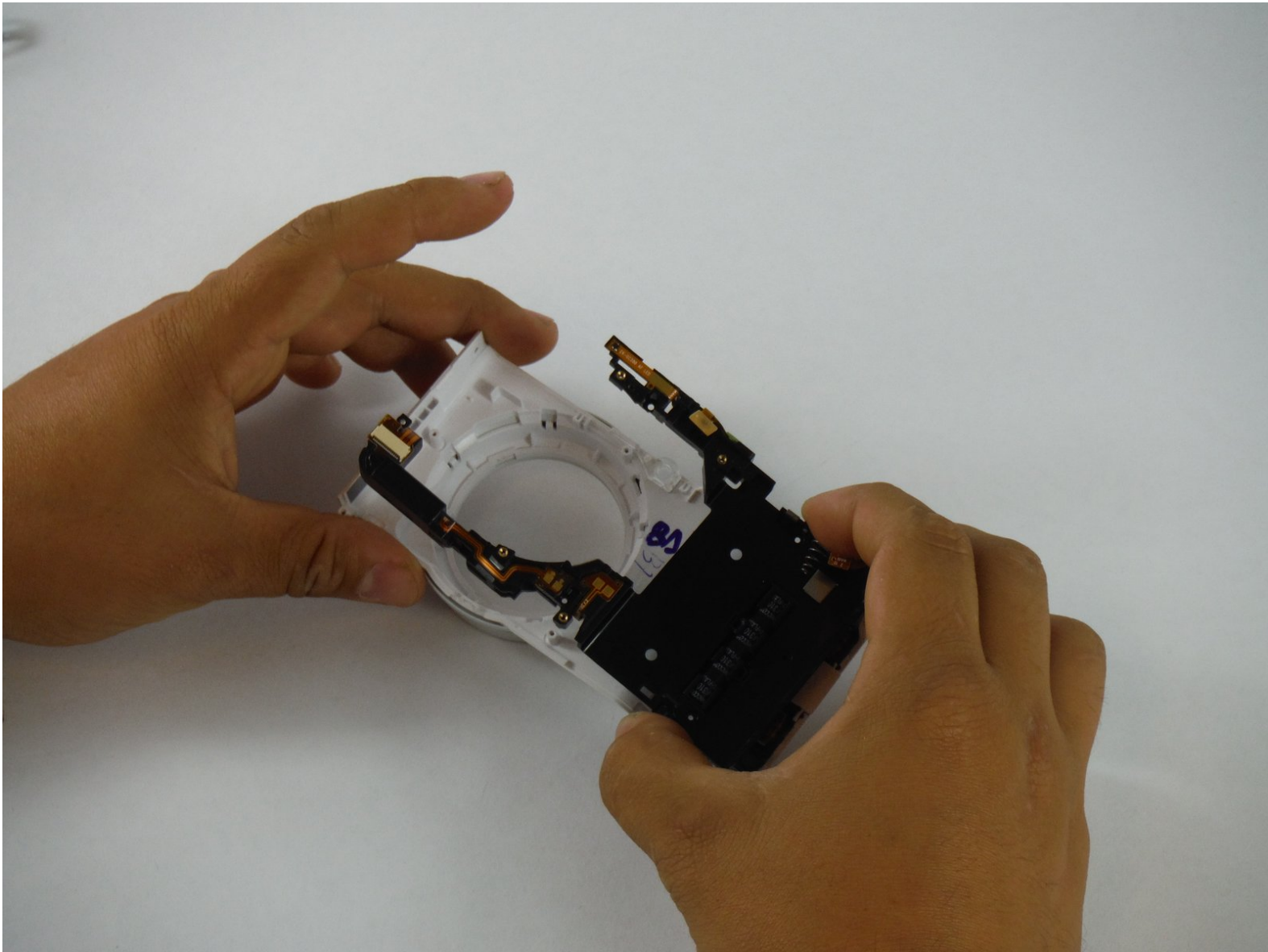




Samsung Galaxy Camera 2 Flash Replacement

This guide is for locating and replacing the entire flash mechanism.

Written By: Sofia Isern



INTRODUCTION

This guide teaches you how to replace the flash in your camera. If the flash isn't staying open or the flashbulb is burnt out, replacing this piece may be the solution to your troubles. Always make sure to remove the battery before attempting any repairs!



TOOLS:

- [Phillips #00 Screwdriver](#) (1)
 - [Tweezers](#) (1)
 - [iFixit Opening Tool](#) (1)
-

Step 1 — Screen



- While holding the camera, take note of each screw holding the screen to the main chassis of the camera.
- Hold the camera upright and lens facing towards you. There are a total of six 4mm PH00 screws to undo - two on the left, one screw on the right, and three along the bottom. Two of them are hidden behind the battery compartment door.

Step 2



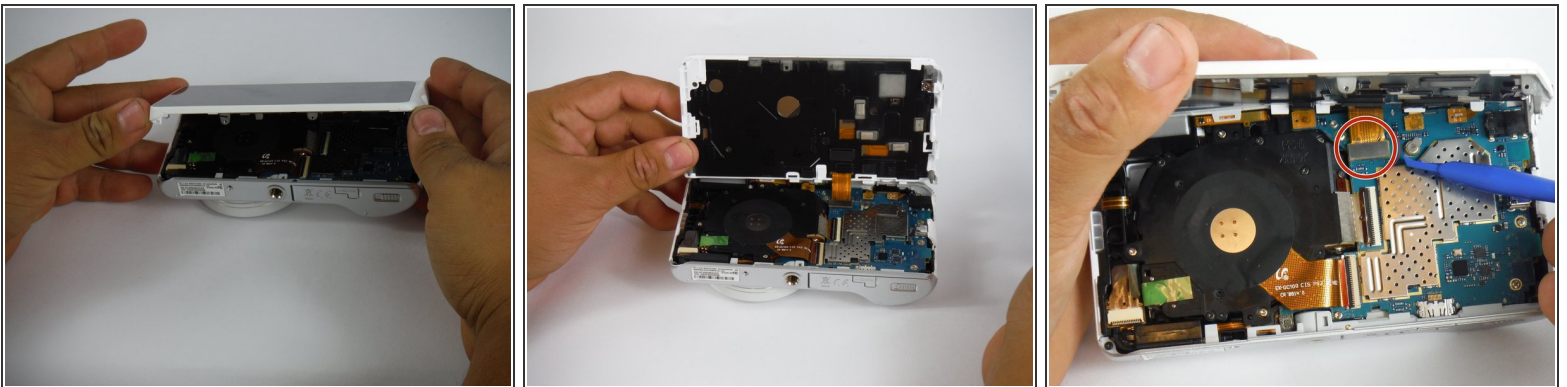
- Use the screwdriver to remove screws listed in step 2. There are a total of six 4mm screws.

Step 3



- With the screws removed, use the plastic opening tool to gently pry the screen away from the main camera chassis. The ideal spot to start is at the corner with the headphone jack, as indicated in the picture.
- Once this side is free, gently work your way along the edge, all the way around the camera body.

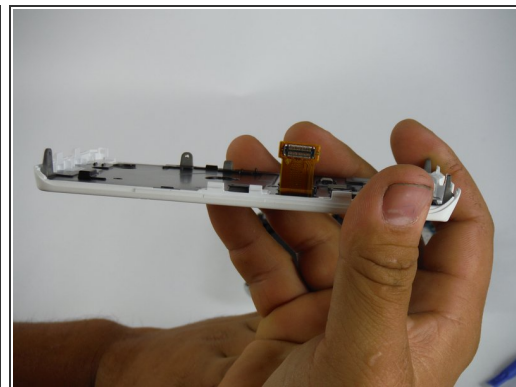
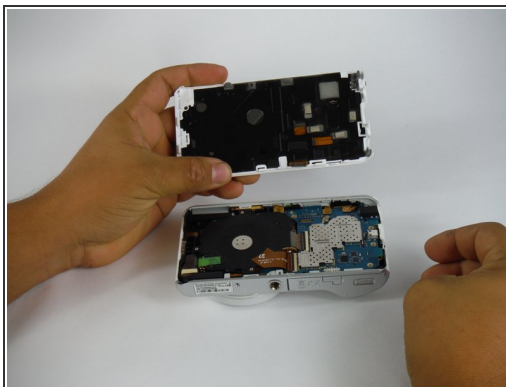
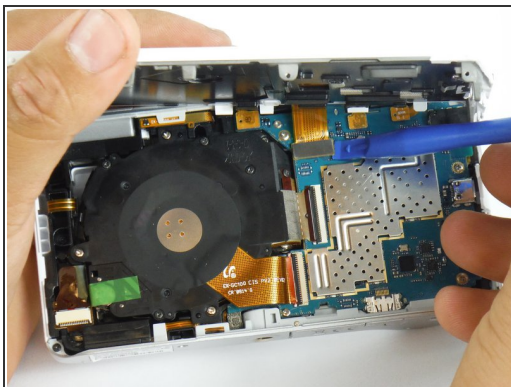
Step 4



- With the screen freed, gently lay the camera on its face, so that the battery compartment faces up. Use both hands to lift the screen up and away.

⚠ The screen is still attached to the motherboard by a ribbon cable. Be Gentle as it's very fragile.

Step 5



- With the screen separated from the main chassis, use the plastic opening tool to gently pry the edge of the ribbon cable connector from the motherboard.

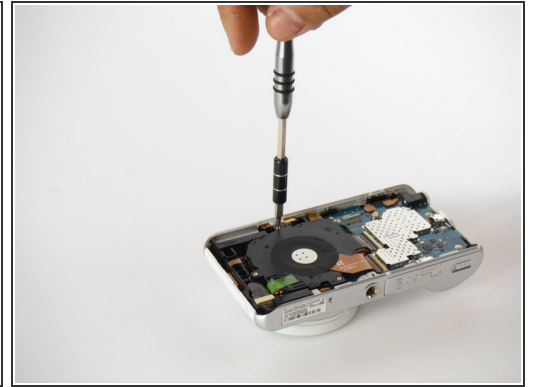
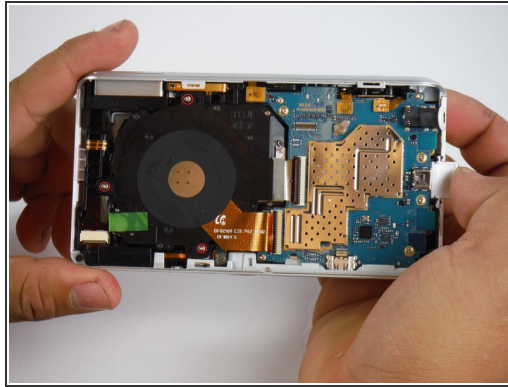
Step 6 — Screen Separated



i Now the screen is removed.

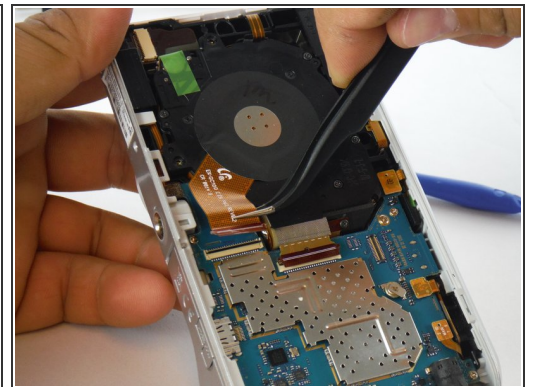
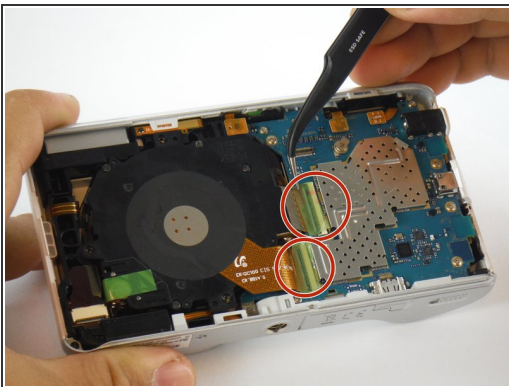
- Set the body aside in a safe place.

Step 7 — Lens Assembly



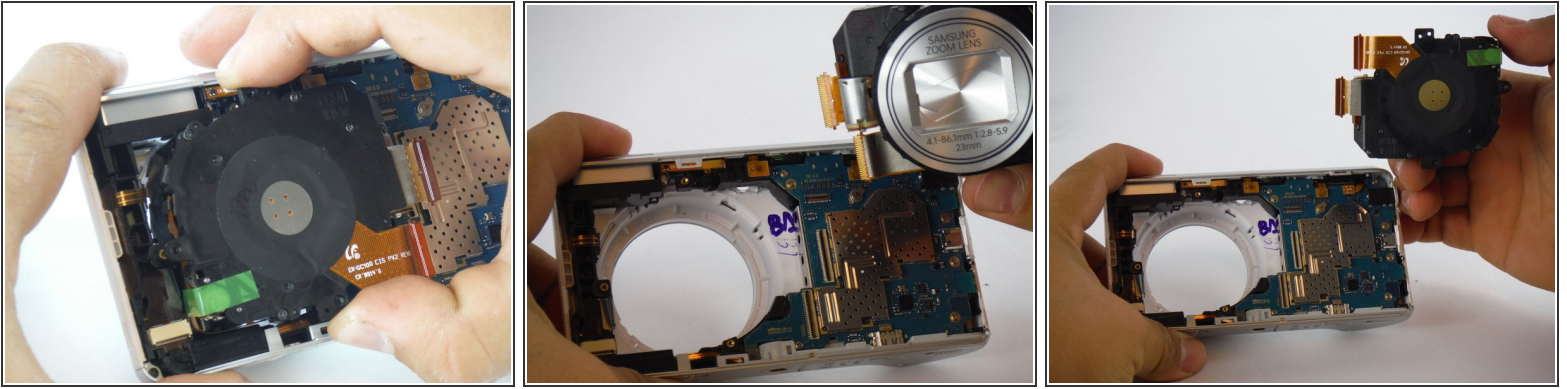
- After removing the screen and battery to access to the inside of the camera, take note of the two main assemblies inside-- the lens apparatus and the main motherboard. The lens assembly is on the left hand side.
- There are three small silver screws (4mm PH00) to remove.

Step 8



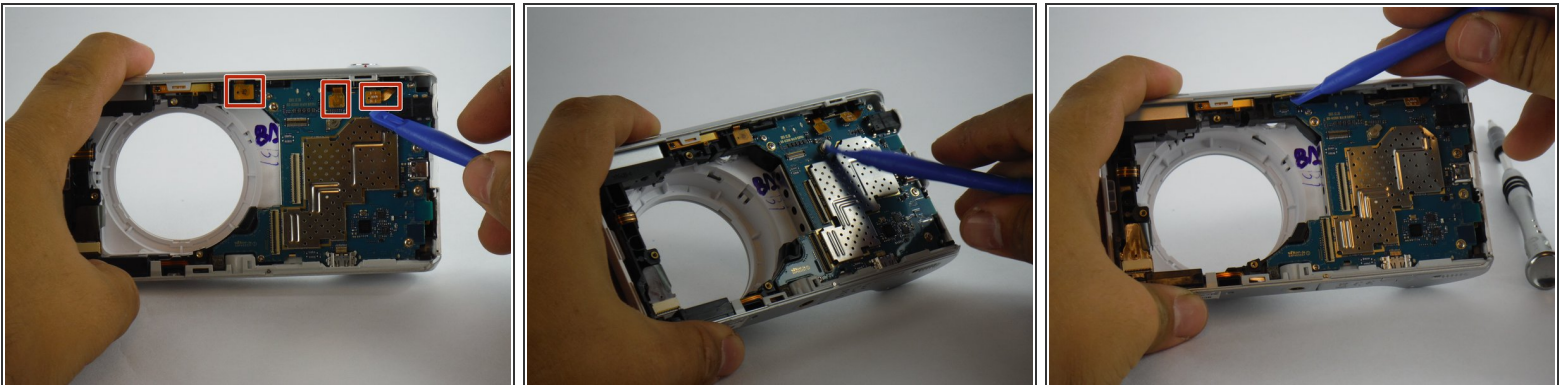
- With the three screws removed, take note of the two ribbon cables connecting the lens assembly to the main motherboard.
- Use the tweezers to remove the two green strips of tape protecting the connectors.
- Use the plastic opening tool to release the black clips locking in the ribbon cables, then use the tweezers to gently pull the ribbon cables away from the main motherboard.

Step 9



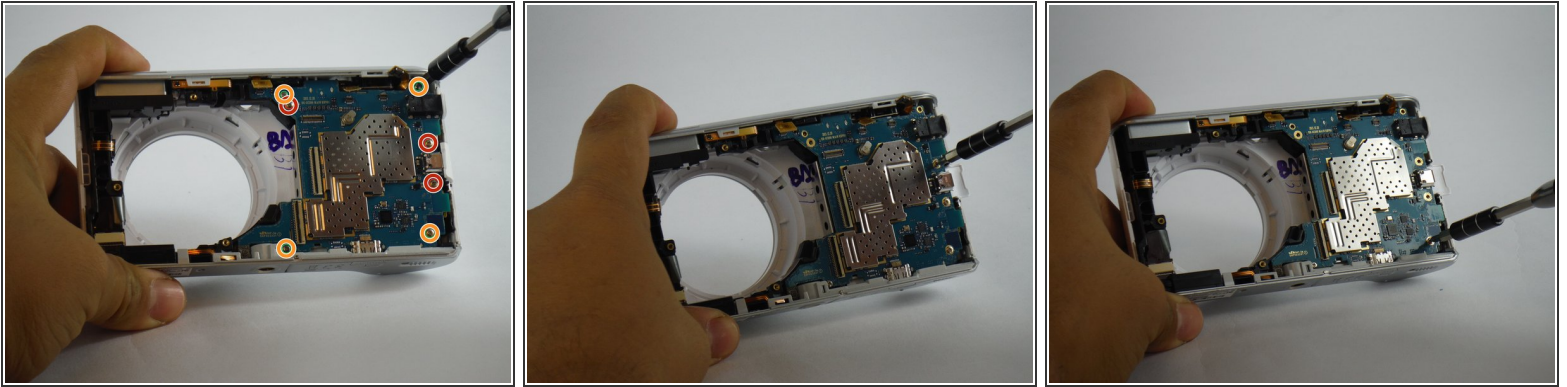
- Now that the screws and ribbon cables have been removed, gently pull the lens assembly up from the the camera and remove it.

Step 10 — Motherboard



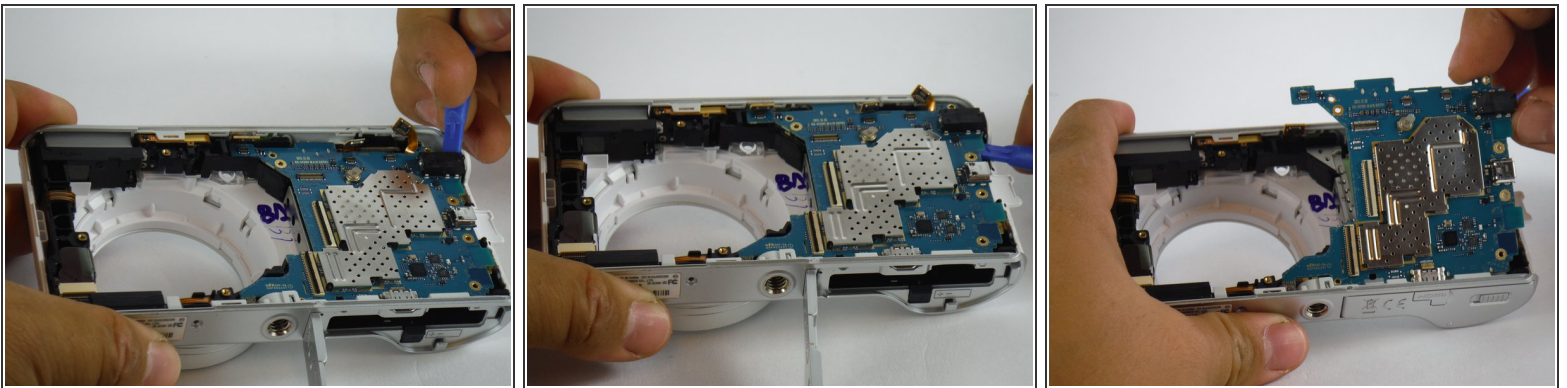
- Now that you've removed the battery, screen, and lens assembly, you are ready to continue in removing the motherboard.
- There are small ribbon cables connected to the motherboard. Use your plastic opening tool and gently pry the sides of the connectors away from the motherboard. Tuck them away to prevent damaging them when removing the motherboard.

Step 11



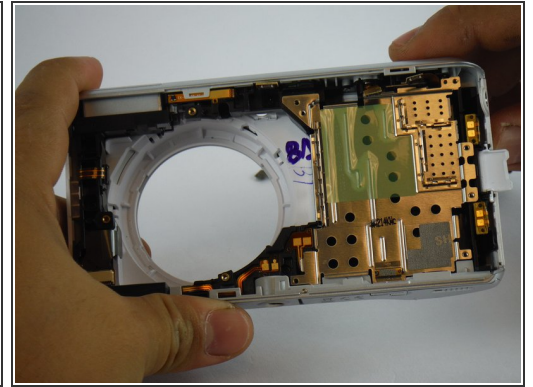
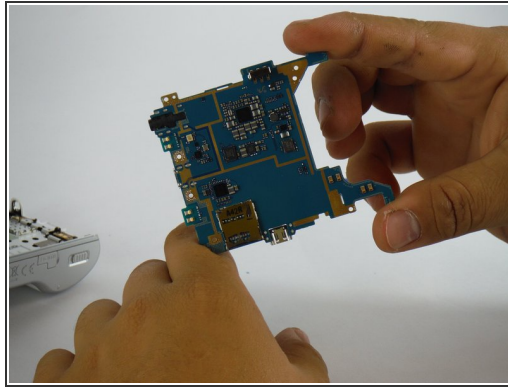
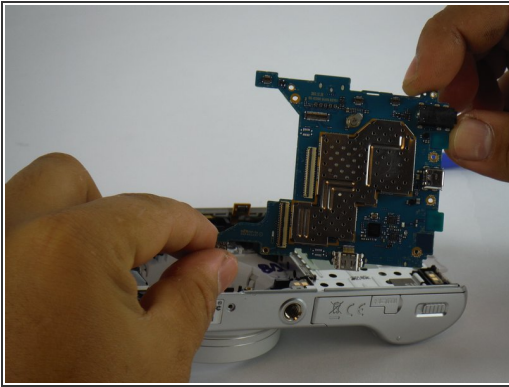
- After removing the ribbon cables, take note of the screws holding the motherboard into the main chassis of the camera.
- There are two types of screws to remove. The four (2mm, PH00) circled in red have a fat head, and go in the gold contact.
- The three (4mm, PH00) screws marked in green have a skinny head.
- Use the IFIXIT screwdriver and PH0 bit to remove all the screws holding the motherboard.

Step 12



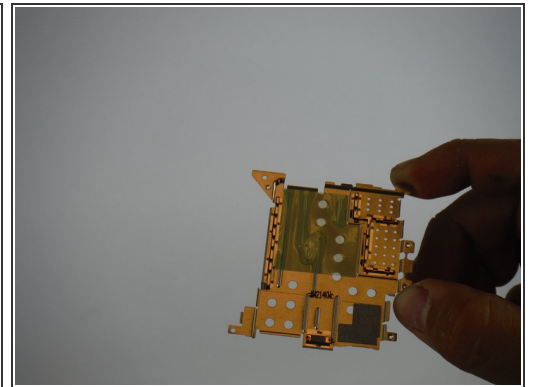
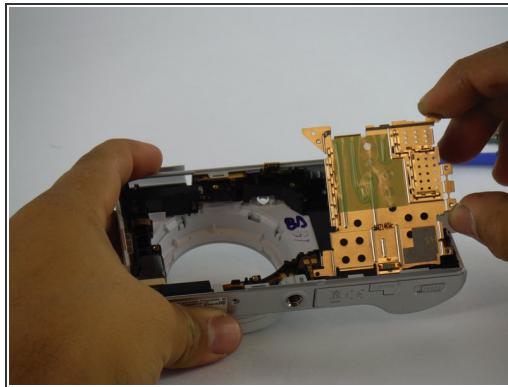
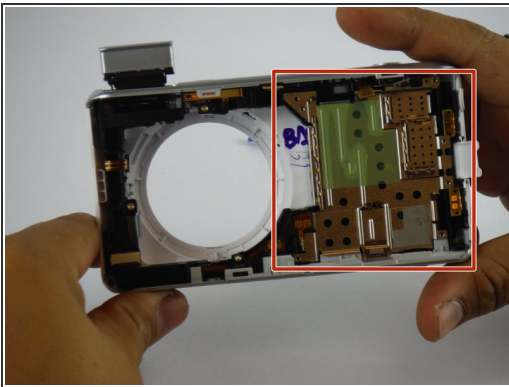
- With all the screws removed, use the plastic opening tool to gently pry the headphone jack away from its casing. That jack holds the motherboard in place.
- Next, gently slide the plastic opening tool underneath the motherboard. Move your fingers underneath and use your hands to completely remove it.

Step 13



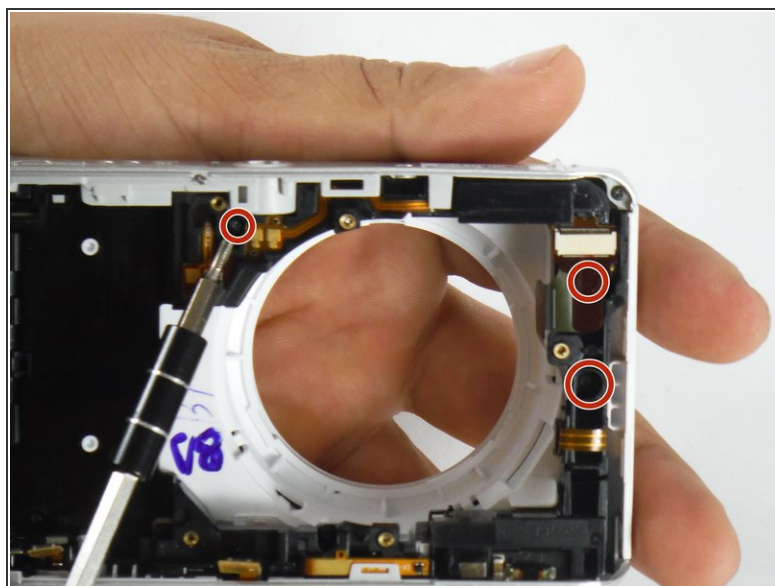
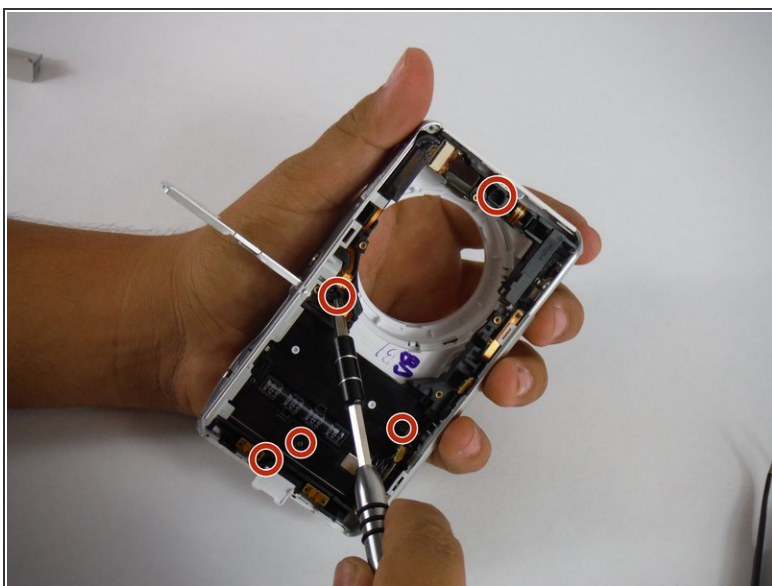
- Now, remove the motherboard completely from the chassis.

Step 14 — Flash



- Underneath the motherboard, there is a thin metal plate. This plate should lift up easily, as there are no screws keeping it in place.

Step 15

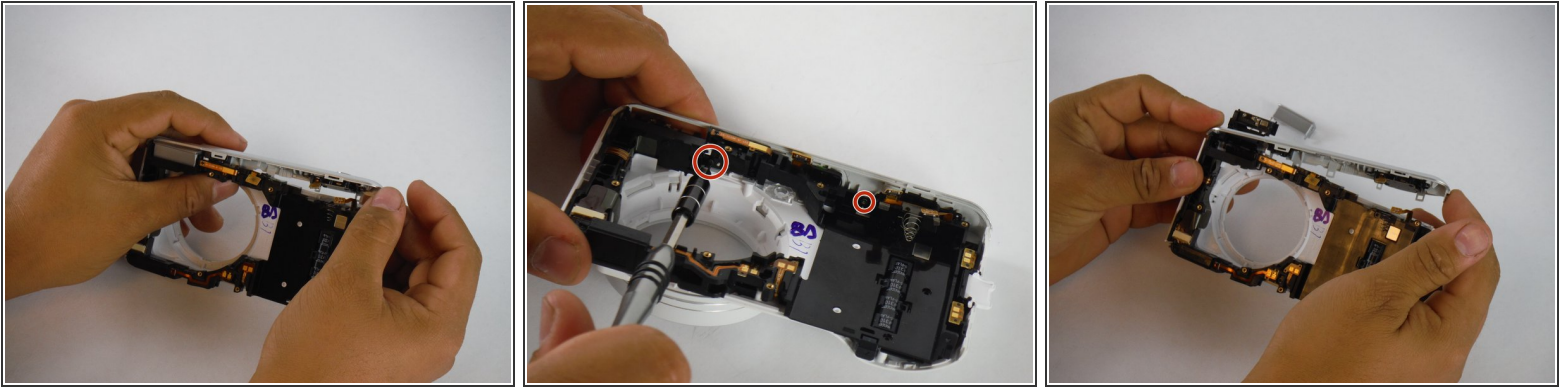


- Now, all that's left is the frame and black interior frame. To get to the flash assembly, the black frame must be entirely removed.

 Due to the abundance of small parts, it may be easy to lose some.

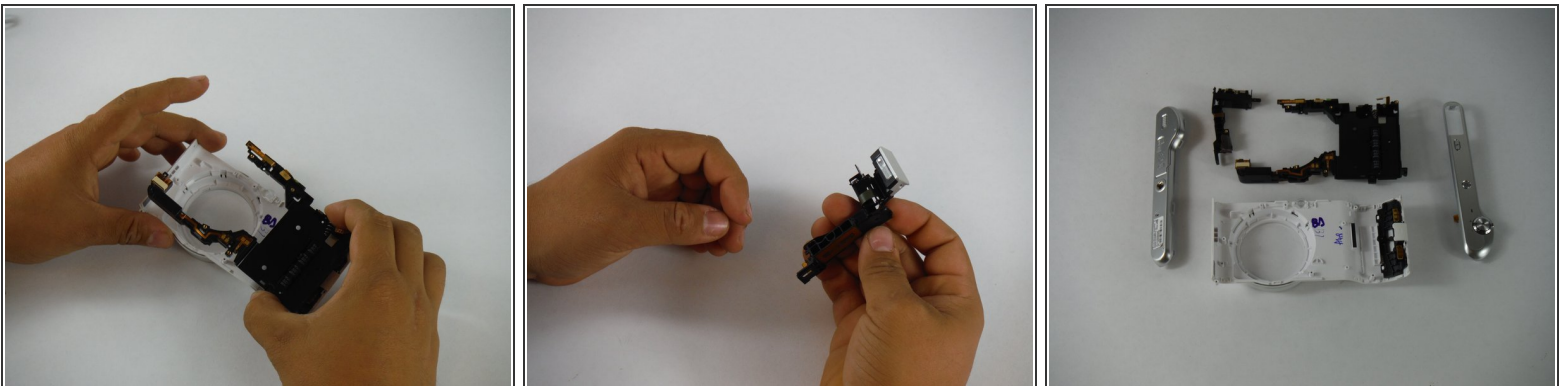
- As a general rule, the black screws belong to the black frame, and silver screws go through the black frame directly into the casing of the camera.

Step 16



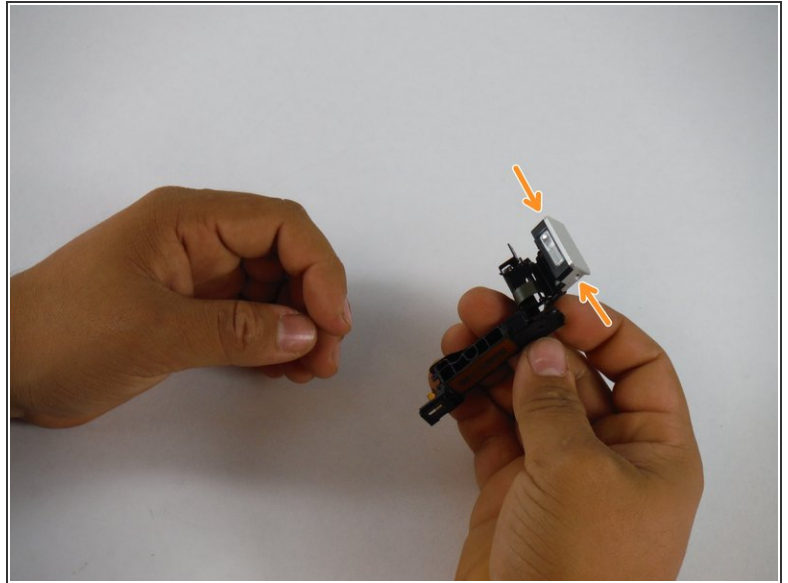
- Before you can take out the black frame, make sure to remove the silver accents on the casing. Use the plastic opening tool to gently pry them off.
- Although not necessary, it is advisable to remove the silver cover from the flash. Take out the two screws holding it together and gently pop off the top with the plastic opening tool. We chose to put it back on for the rest of the guide to add stability to the piece.

Step 17



- Next, gently use the plastic opening tool to pry the black frame out of the casing. The frame should lift out easily. If you feel some resistance, you may have missed a screw.

Step 18



- Now, looking at the black frame, the top left corner is the flash mechanism.
- Taking out the two (3mm PH00) screws from the plastic flash cap frees the light bulb so that it can be changed.

To reassemble your device, follow these instructions in reverse order.