



Hamilton Beach 48464 Power Cord Replacement

This guide will show you how to access the origin of the power cord. This is important to understand because once you know where the cord begins, you will be able to inspect the entire cord and check for damage.

Written By: Michael Damico



INTRODUCTION

This guide show use how to get to the power cord. One might find this help when repairing/replacing a faulty cord.



TOOLS:

- [Phillips #2 Screwdriver](#) (1)
 - [Crown Bolt #8 Steel Spanner](#) (1)
-

Step 1 — Base



- This is what the bottom cover will look like. Flip the Brew Station upside down to easily access the screws.

Step 2



- Using the Philips 2 Screwdriver, unscrew the three 8-mm screws labeled in a red outline.
- Using the Crown Bolt #8 Steel Spanner, unscrew the two 8-mm screws labeled in an orange outline.

Step 3



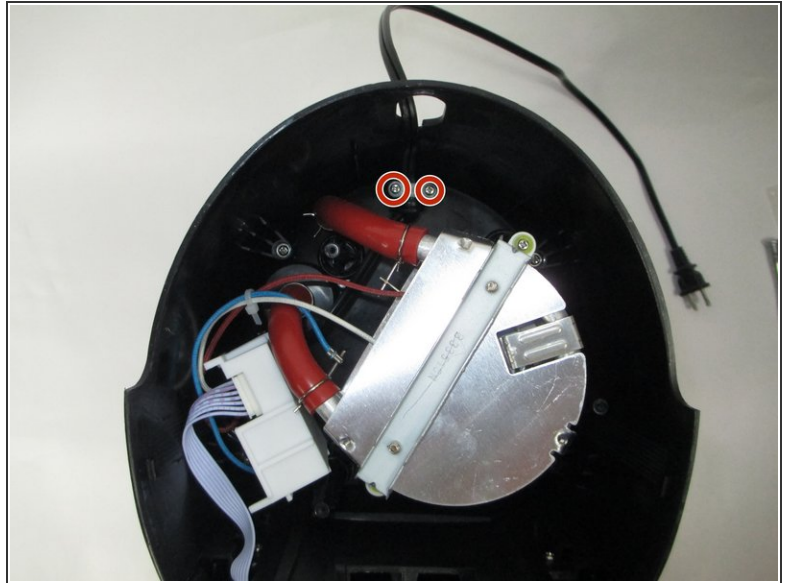
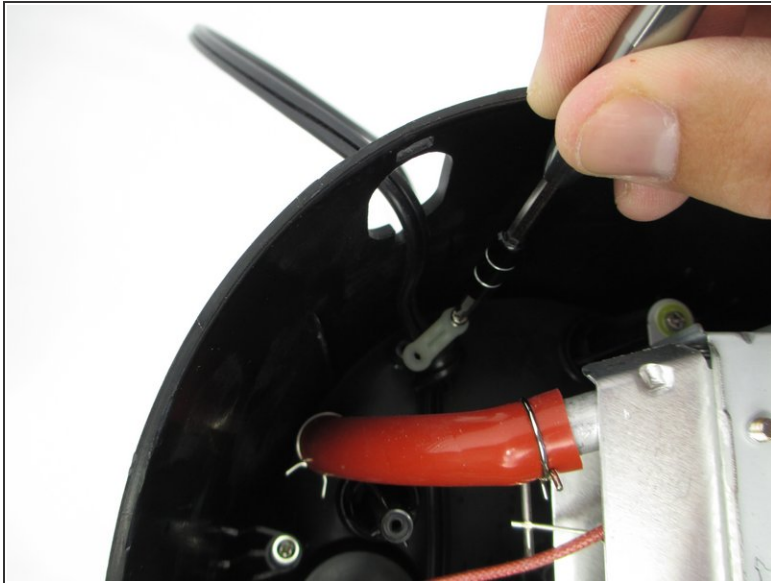
- Carefully slide off the bottom drip tray by sliding it out away from the Brew Station.

Step 4



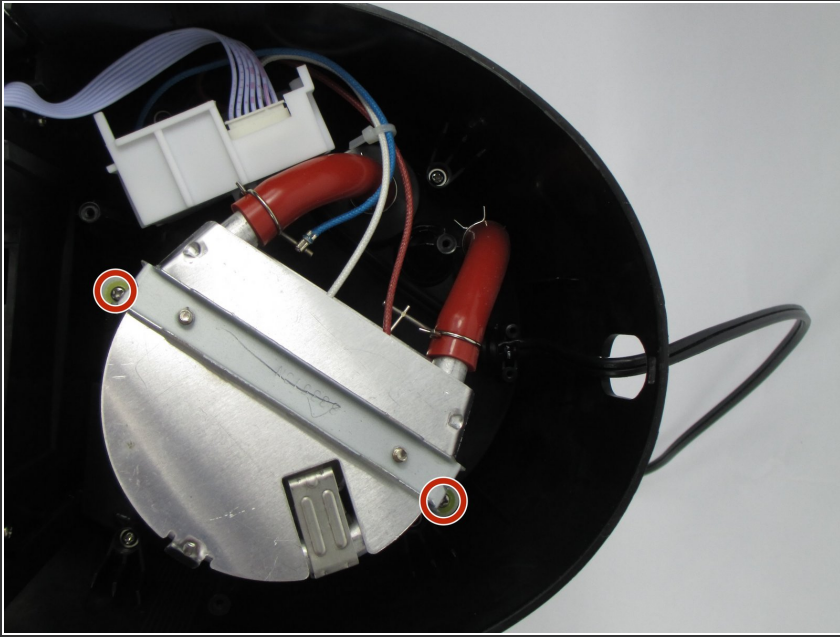
- Gently lift the base away from the Brew Station.

Step 5 — Power Cord



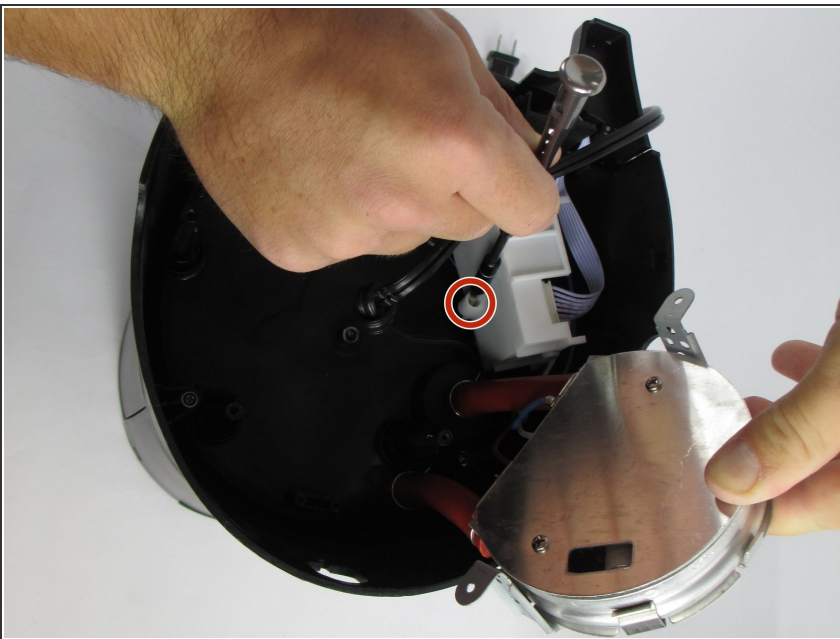
- Using the Philips 2 Screwdriver, unscrew the two 8-mm screws labeled in a red outline.

Step 6



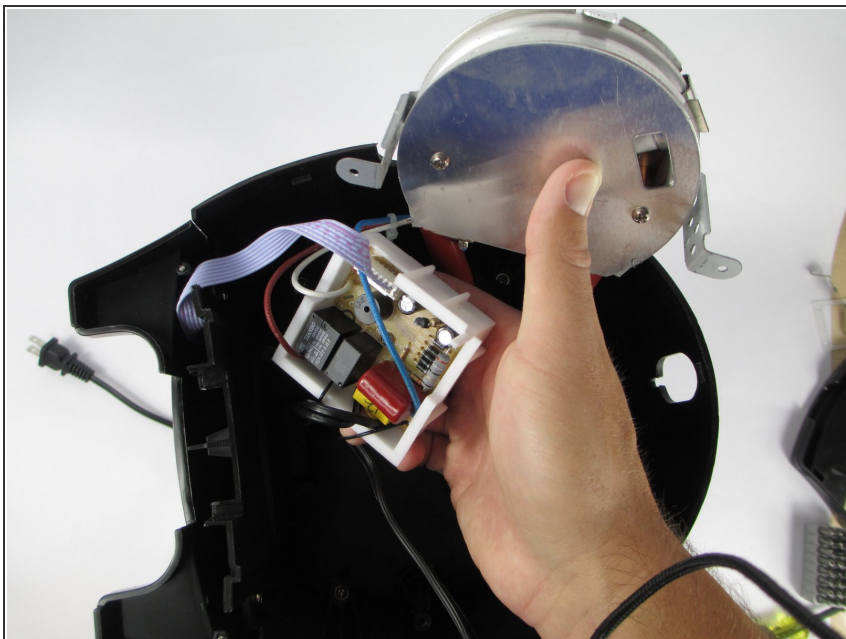
- Using the Philips 2 Screwdriver, unscrew the two 8-mm screws labeled in a red outline. This will release the bracket that is holding down the large piece in the middle.

Step 7



- Using one hand, gently lift the large silver piece out of the base.
- ⓘ The silver piece will still be connected to the Brew Station, so handle it with care.
- Using the Philips 2 Screwdriver, unscrew the two 8-mm screws labeled in a red outline.

Step 8



- Once the screw is out, gently lift the white circuit board out of the base. This will be where the power cord begins, so you will now have access to the full length of the cord.

To reassemble your device, follow these instructions in reverse order.