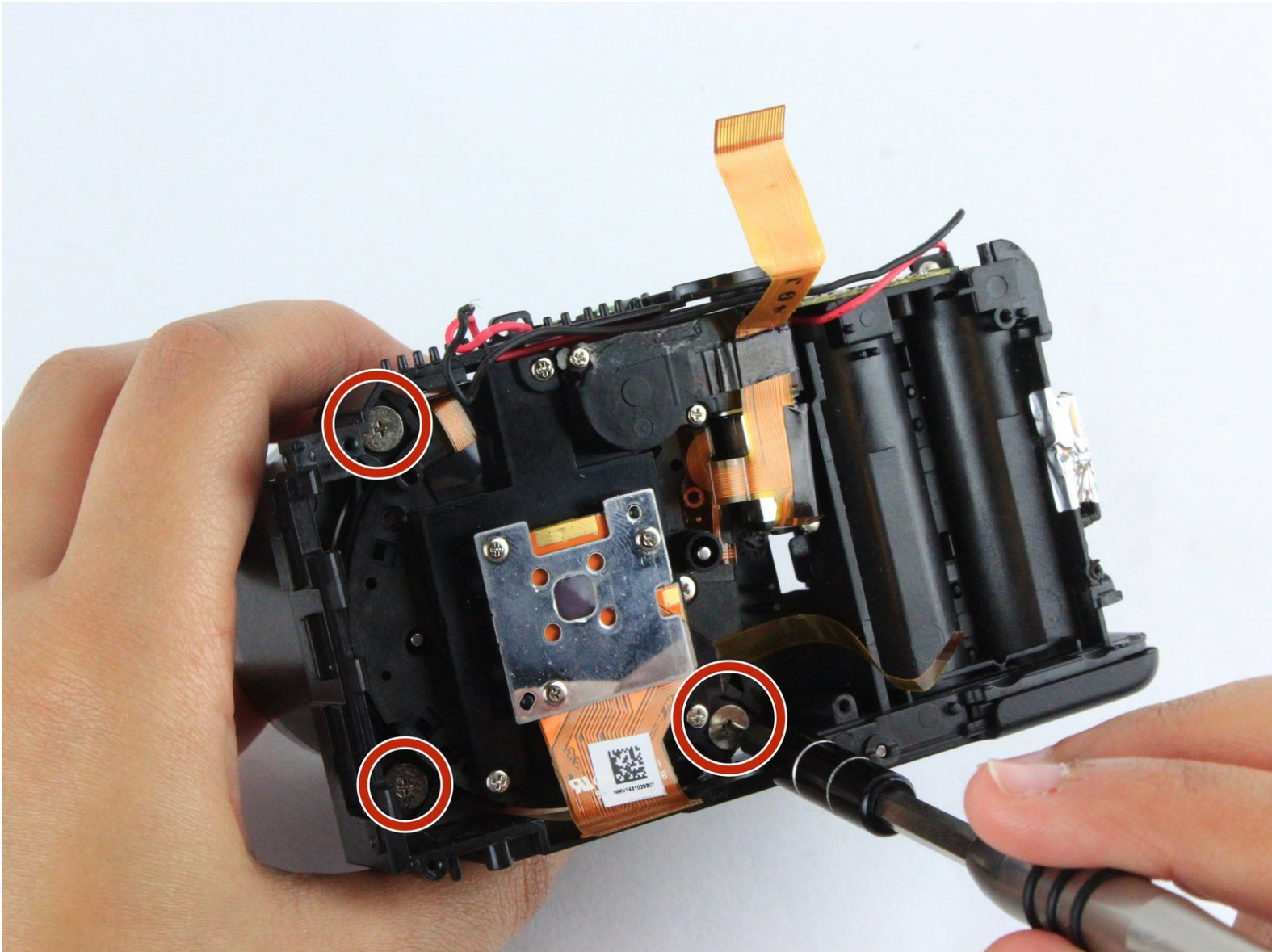




# Nikon Coolpix L330 Lens Barrel Assembly Replacement

This guide will help to learn how to replace broken lens and lens motor for Nikon Coolpix L330.

Written By: Rajeev



# INTRODUCTION

If your camera lens and lens motor has been broken, this guide will show you step by step how to replace the broken lens and motor with a new ones.



## TOOLS:

- [Metal Spudger](#) (1)
  - [Phillips #000 Screwdriver](#) (1)
  - [iFixit Opening Tools](#) (1)
  - [Screwdriver](#) (1)
  - [Tweezers](#) (1)
-

## Step 1 — Back Housing



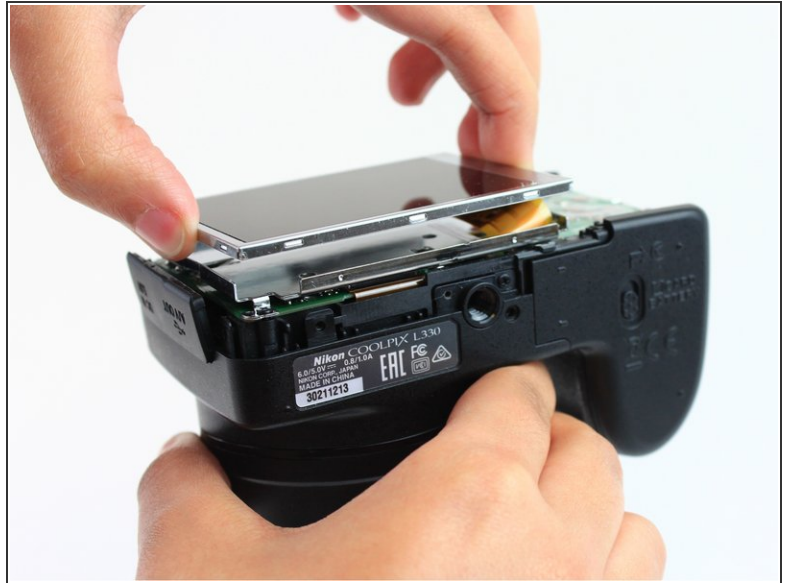
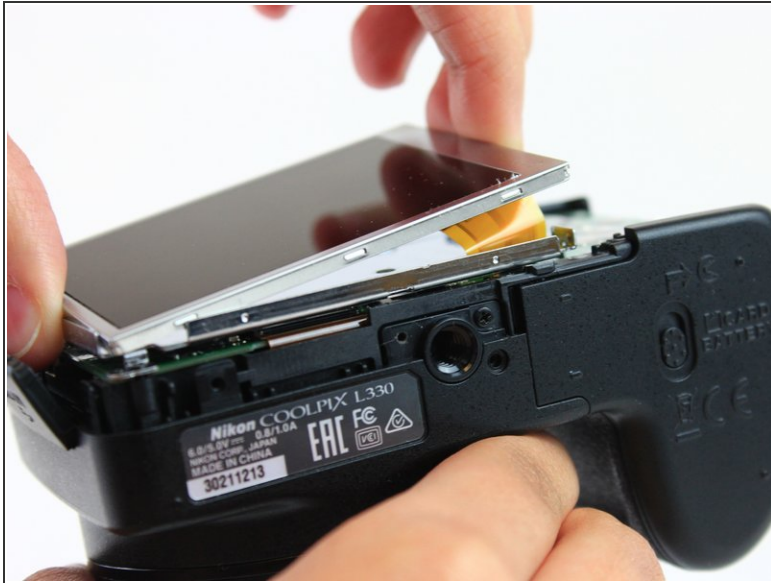
- There are six screws attaching the back housing to the camera. Remove the screws from the body with a PH000 screw head.
  - Two 1.5x2.5mm screws on the right side.
  - Two 1.5x2.5mm screws on the underside.
  - Two 1.5x2.5mm screw on the left side.

## Step 2




- After removing the screws, use a metal spudger or plastic opening tool to push the back cover out.
- ⚠ The metal spudger can damage the plastic housing, so use caution when applying any pressure to it. Use a plastic opening tool to reduce the risk of damage to the housing.
- Remove the back housing of the camera by lifting it directly up.
- ⓘ The back cover may be slightly tight, therefore more force may be needed to lift it up.

## Step 3 — LCD Screen



- Insert the tips of your fingers into the space between the screen and back-plate.
- Gently lift the screen up and out of the frame.

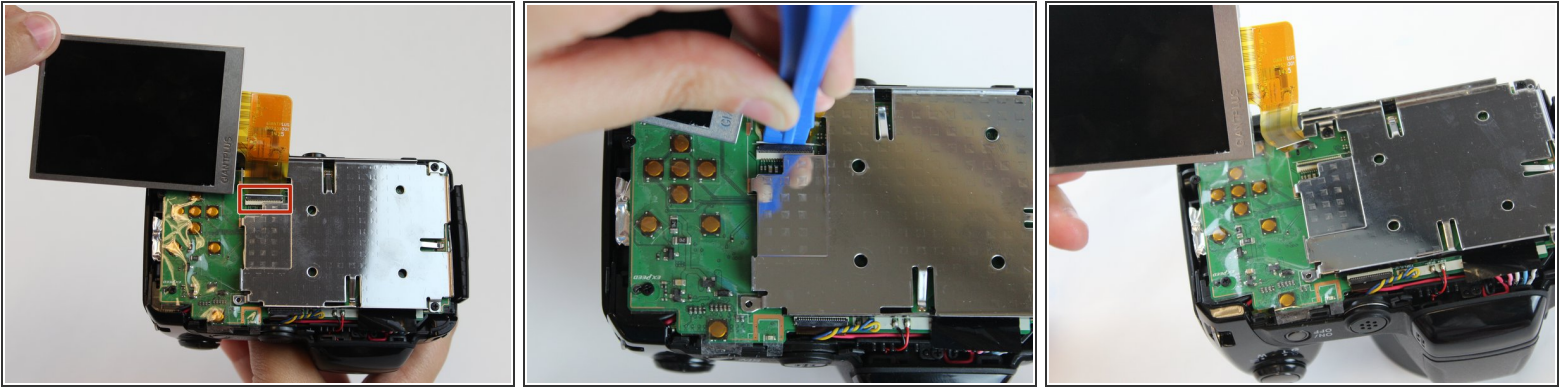
 The screen is still held by a flexible display cable, therefore only lift the screen 0.5" out of the back-plate.

## Step 4



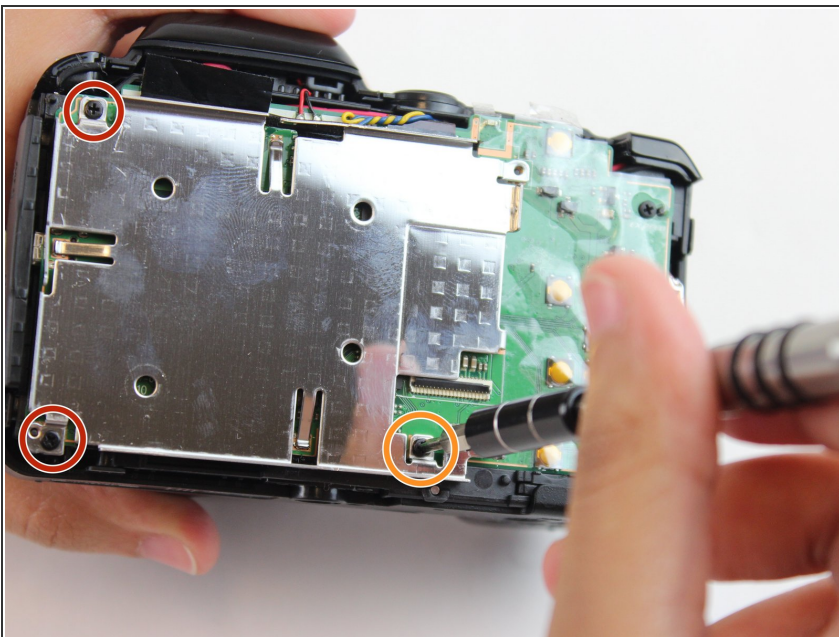
- Tilt the screen so that the display cable forms a hinge with the backplate.
- Rotate the display 180 degrees so that it faces you.

## Step 5



- ❗ The display cable has a ZIF (zero insertion force) connector on the end. This has a tab that has to be pushed out before the cable can be safely removed.
- Using a plastic opening tool or fingernail, pop up the black clip holding the display cable. This will release the cable.
- Slide the display cable out of the connector.
- ⚠ The display cable can be damaged due to excessive bending, therefore avoid putting unnecessary strain on it.


## Step 6 — Motherboard



- Remove the screws from the silver back-plate with a PH000 screw head.
- Two 1.5x2.5mm screws on the left side.
- One 1.5x2.5mm screw on the right side.

## Step 7



 The marked red box contains a highly charged capacitor. Check the charge using a voltmeter and discharge it first before continuing. [Discharge capacitor guide.](#)

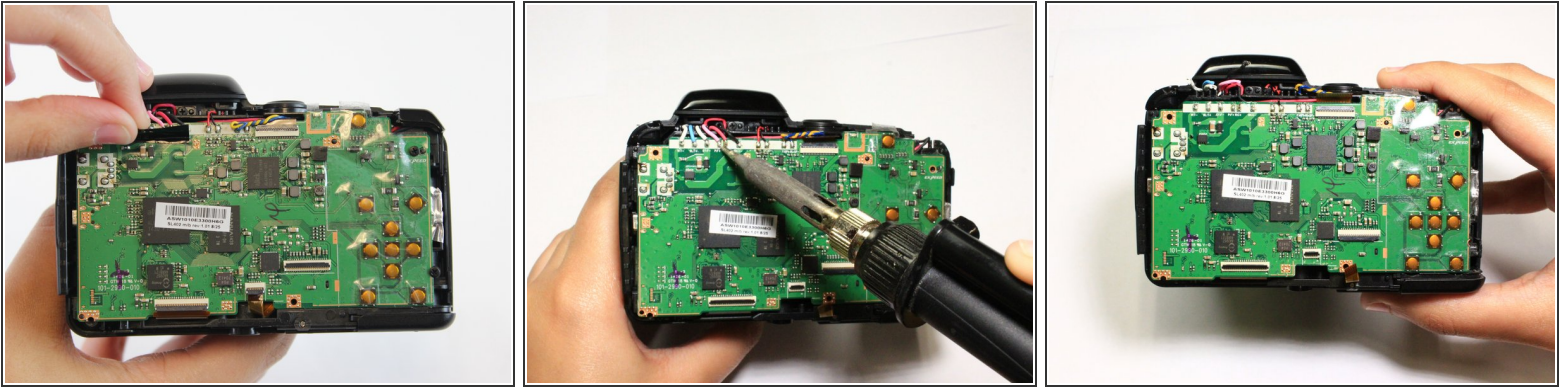
- Remove the screws holding the motherboard with a PH000 screw head.
- Two 1.5x2.5mm screws on the right side.

## Step 8



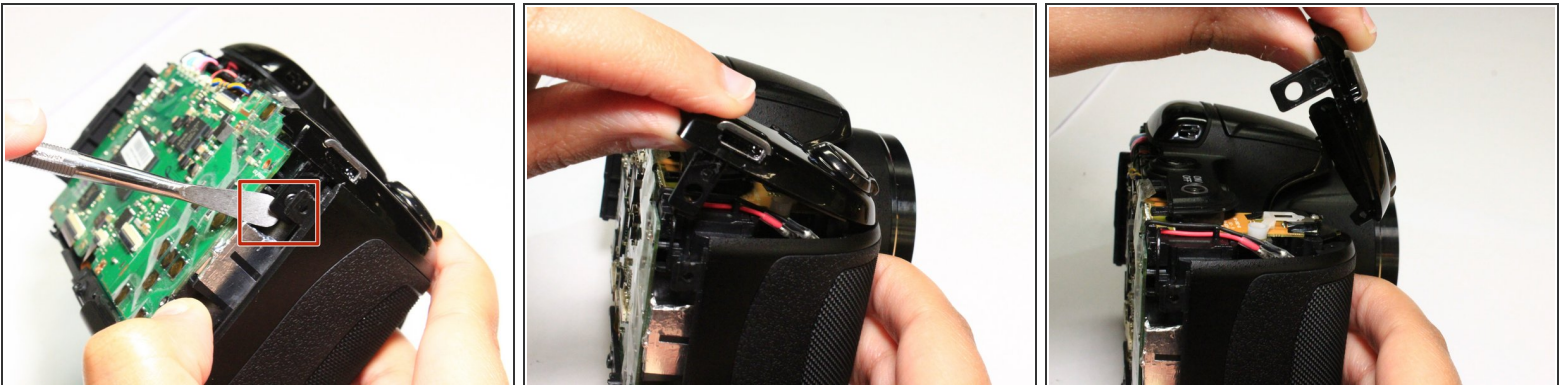
- Using a plastic opening tool or fingernail, pop up the black clips holding the ribbon cables. This will release the cables.
- Slide the ribbon cables out of the connectors.

## Step 9



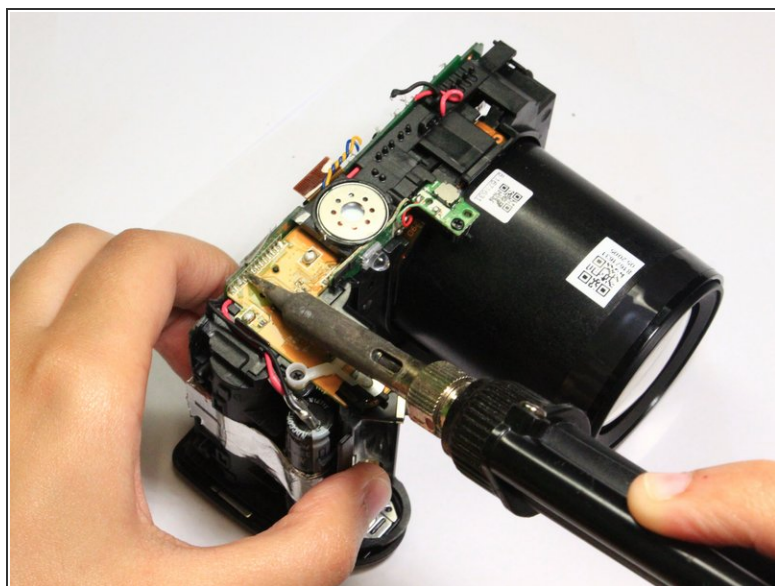
- Remove the black sticker covering the electrical connections.
- Desolder the eight wires from the motherboard.

## Step 10



- Insert a plastic opening tool into the marked position. Push the tool towards the right to release the clip.
- Using a thumb and forefinger, push the plastic cover up until it is at a 45 degree angle.
- Pull the cover back and up to release it.

## Step 11



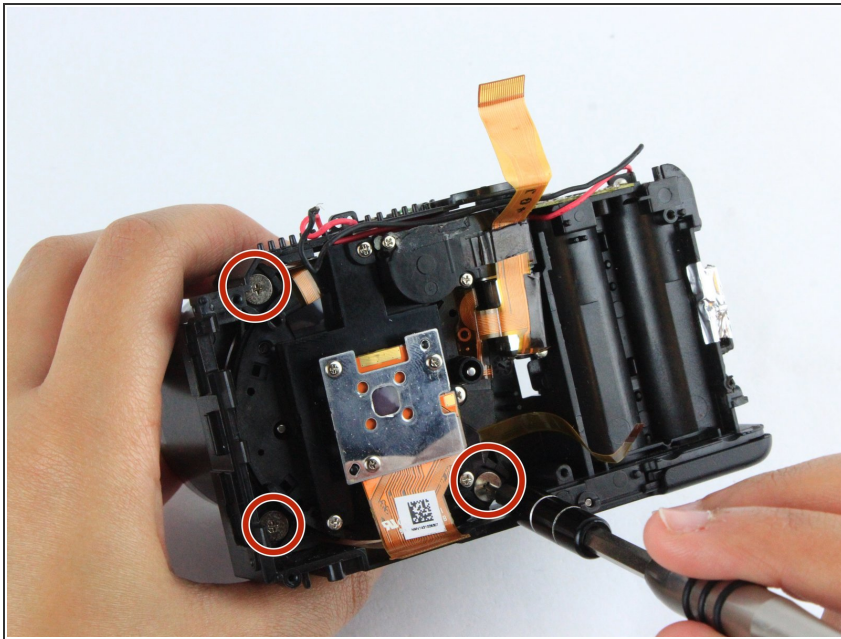
- The motherboard is still held in place by soldered connections.
- Carefully desolder the connections .
- ⓘ The front cover has been removed in this picture, however the procedure is still the same.

## Step 12



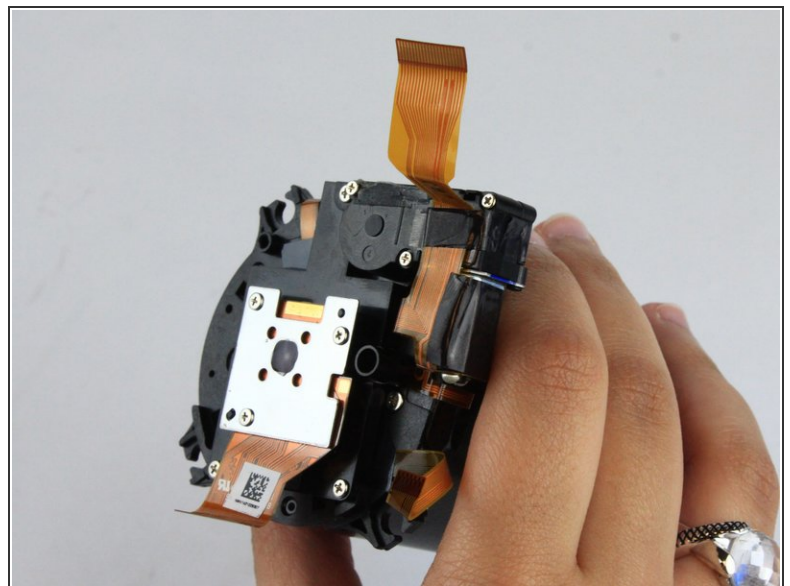
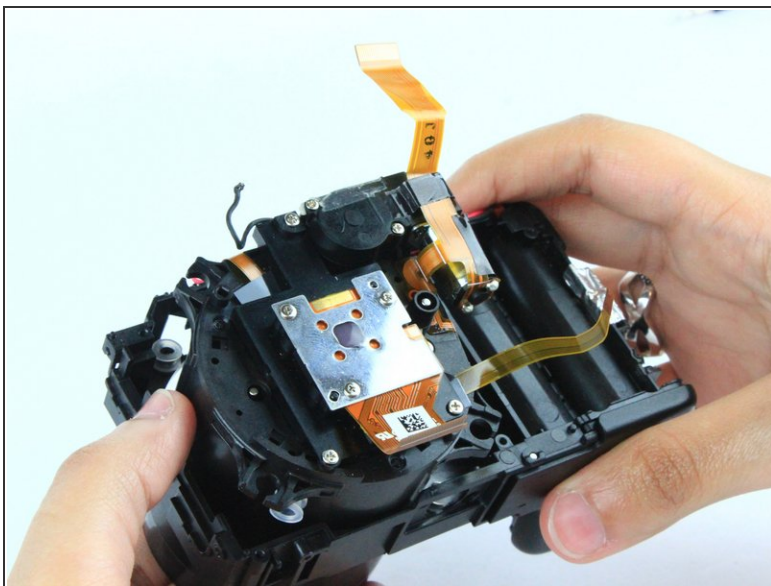
- Remove the motherboard by lifting it directly up.

## Step 13 — Lens Barrel Assembly



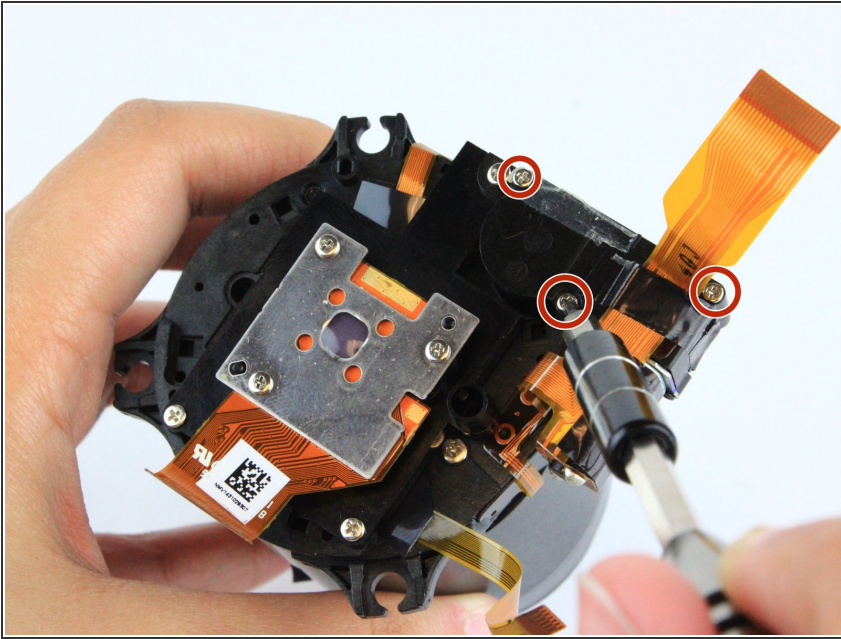
- Remove the three 2.90x1.75mm screws using a PH000 screw head.

## Step 14



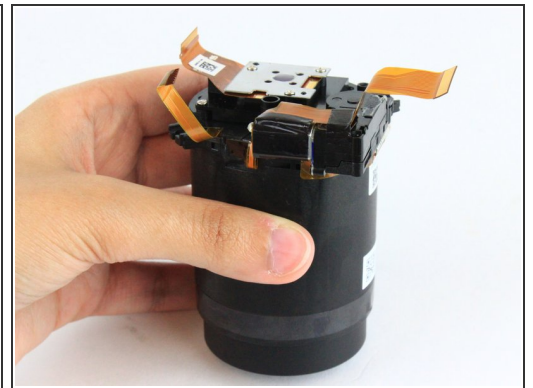
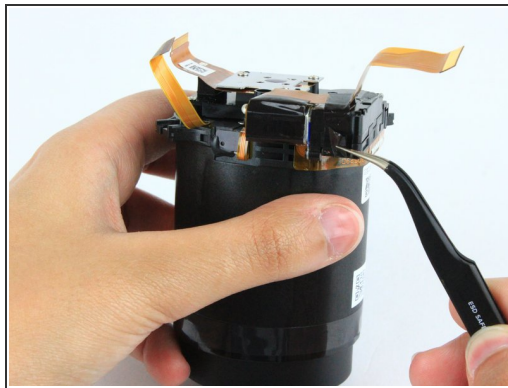
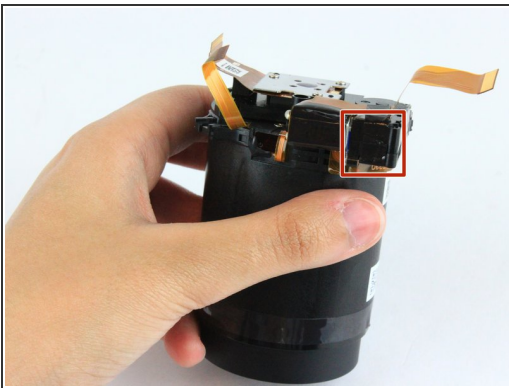
- Gently push the lens barrel up and out of the case.

## Step 15



- i** If the camera has grinding gears which lead to inefficient lens extension, this additional procedure will replace them.
- Remove the three 1.25x4.75mm screws using a PH000 screw head.

## Step 16



- Black tape covers the motor assembly.
- Remove the tape using a pair of tweezers.

## Step 17



- Lift the top part of the gear housing up and away from the main housing.
- Check the gears to see if they are damaged and need replacing.

To reassemble your device, follow these instructions in reverse order.