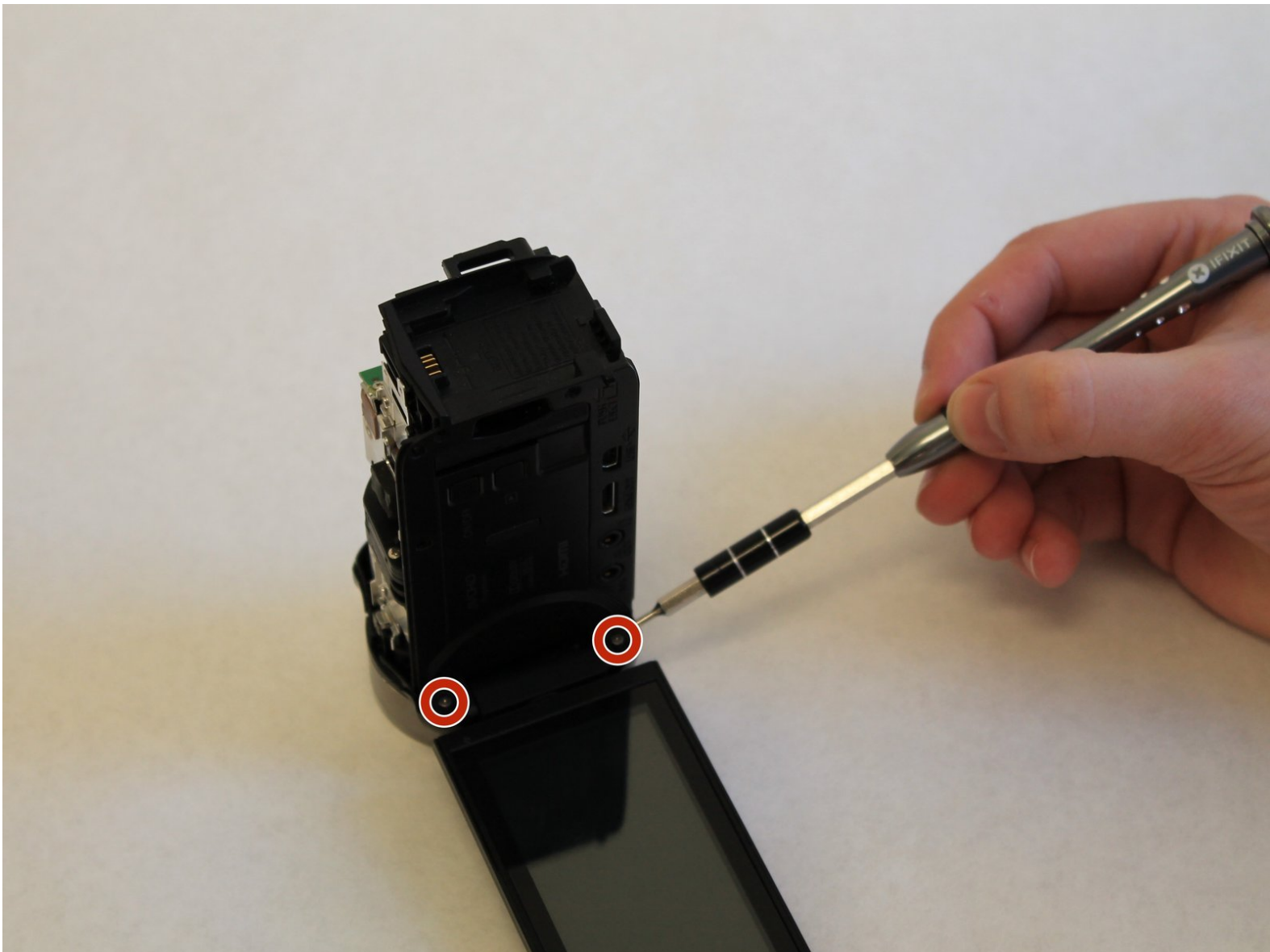




# Canon Vixia HF R500 Lens Cover Replacement

Replace or repair the lens cover. Access lens cover mechanism to remove debris.

Written By: James Walker



## INTRODUCTION

If the lens cover on your camera will not open or close it could be caused by debris blocking the mechanism or a broken mechanism component. This guide will show you how to remove the lens cover from your camera so you can clean or repair it.



### TOOLS:

- [Magnetic Project Mat](#) (1)
  - [Phillips #000 Screwdriver](#) (1)
  - [Spudger](#) (1)
-

## Step 1 — Grip Belt



- On the right side of the camcorder remove the grip belt.

## Step 2 — Battery



- Hold on to the battery.

## Step 3



- On the bottom of the battery hold the battery release switch.

## Step 4



- Remove the battery slowly away from the camcorder.
- ⚠ Removing the battery quick or in a different angle may cause sparks and damage to device.

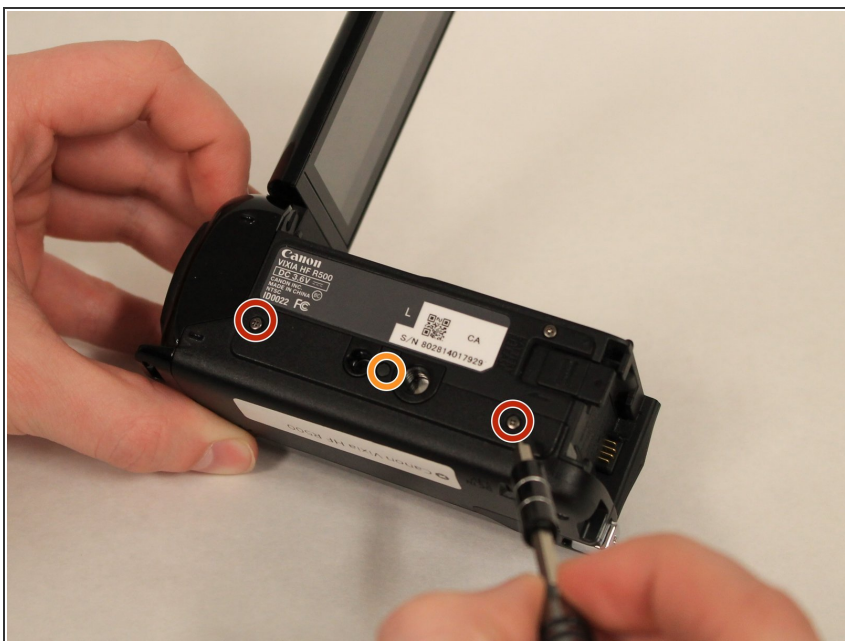


## Step 5 — Canon Vixia HF R500 Disassembly



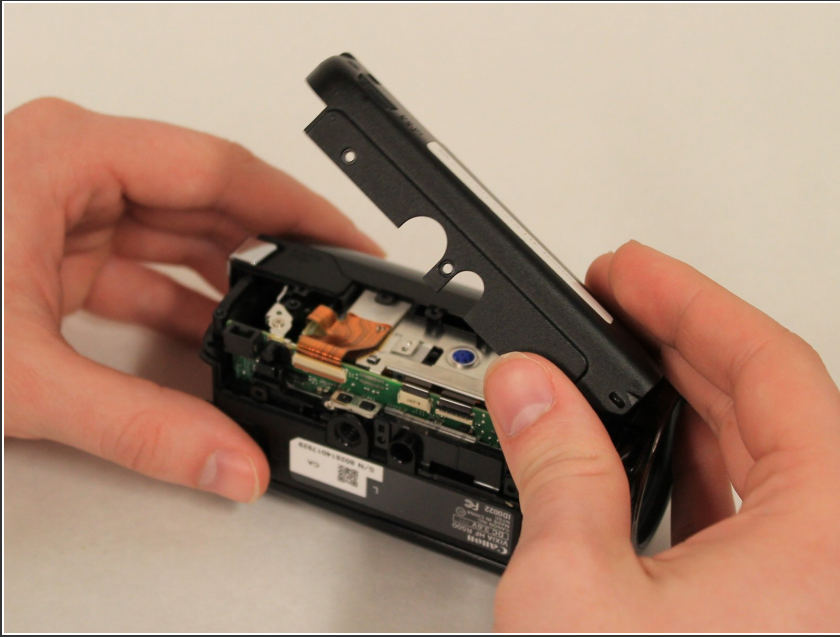
- Remove the two 8mm Philips #000 screws on the side where the grip belt was located on.

## Step 6



- Remove the two 4mm Philips #000 head screws from the bottom of the camcorder.
- A hidden 4mm Philips #000 screw is shown under the black plug shown.

## Step 7



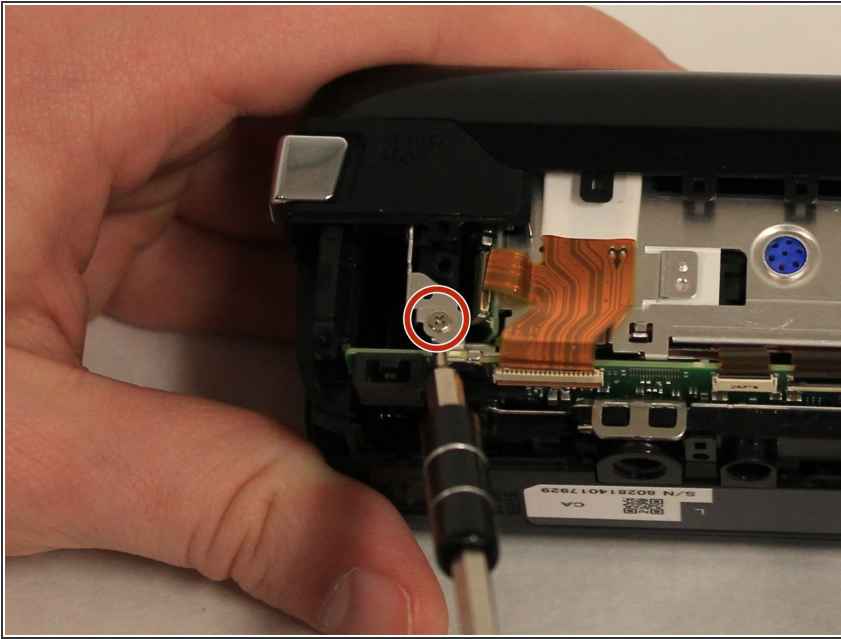
- Remove the side piece plate.

## Step 8



- Near the LCD screen, remove the three 7mm Philips #000 screws in the picture shown.

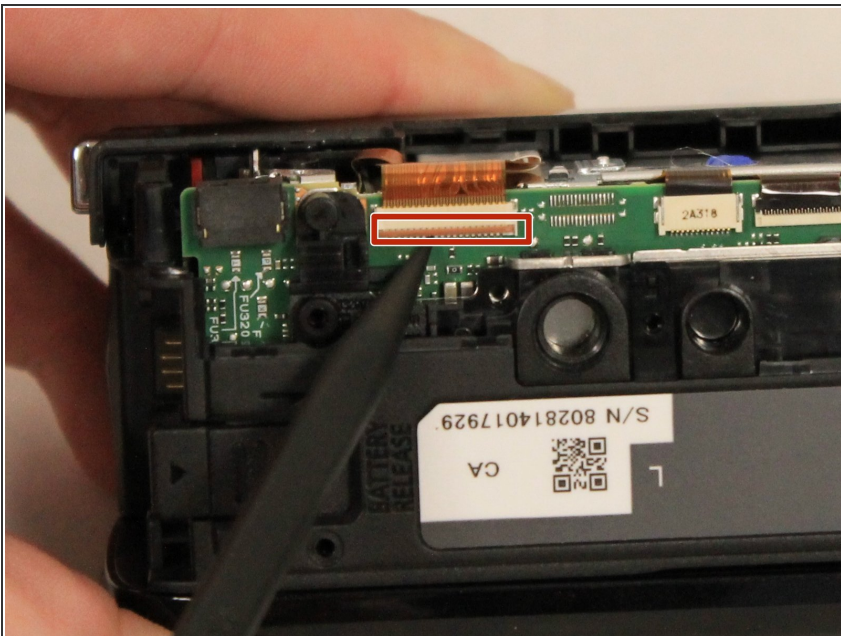
## Step 9



- Carefully place the camcorder where the inside of the device is facing upwards and remove the 3mm Philips #000 screw shown.

⚠ Do not use strong magnetic parts on the inside, as they may damage the device.

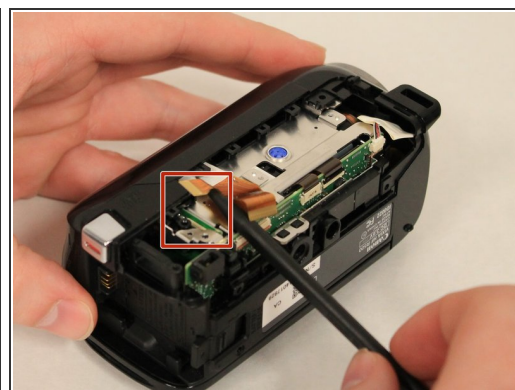
## Step 10



- Using the spudger, pull the tab shown to start removing the ribbon cable.

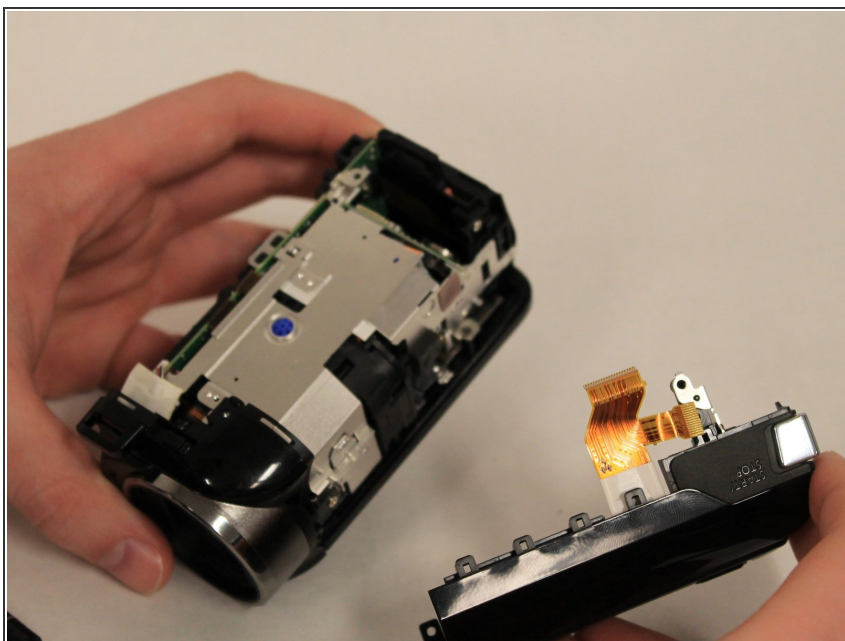


## Step 11



- Using the Spudger, carefully remove the two ribbon cables that are connected to the top of the device.

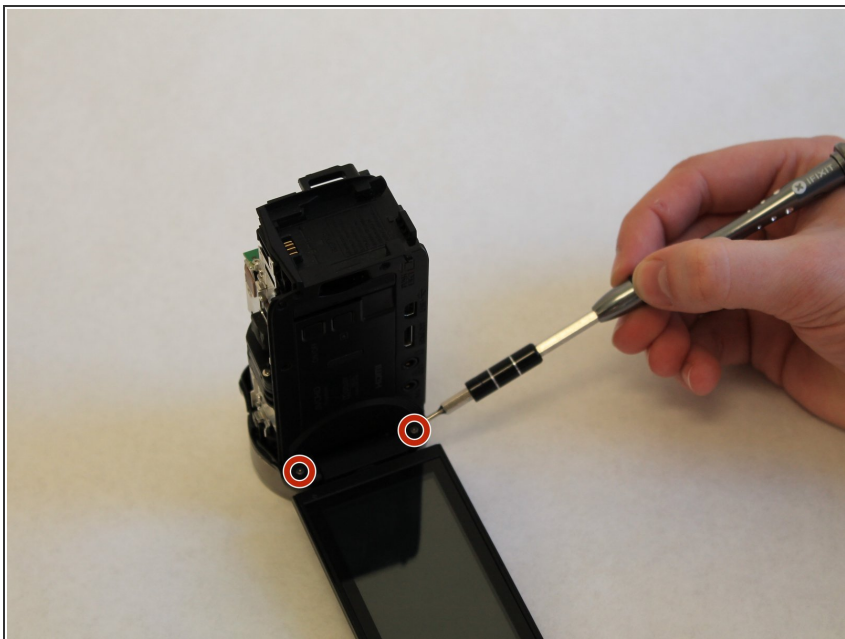
## Step 12



- Remove the top piece.

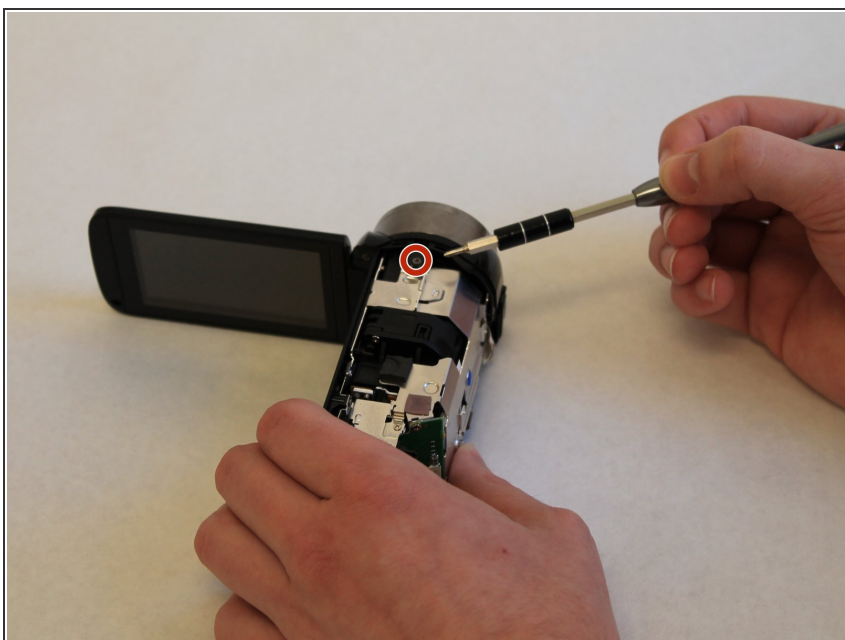


## Step 13 — Lens Cover



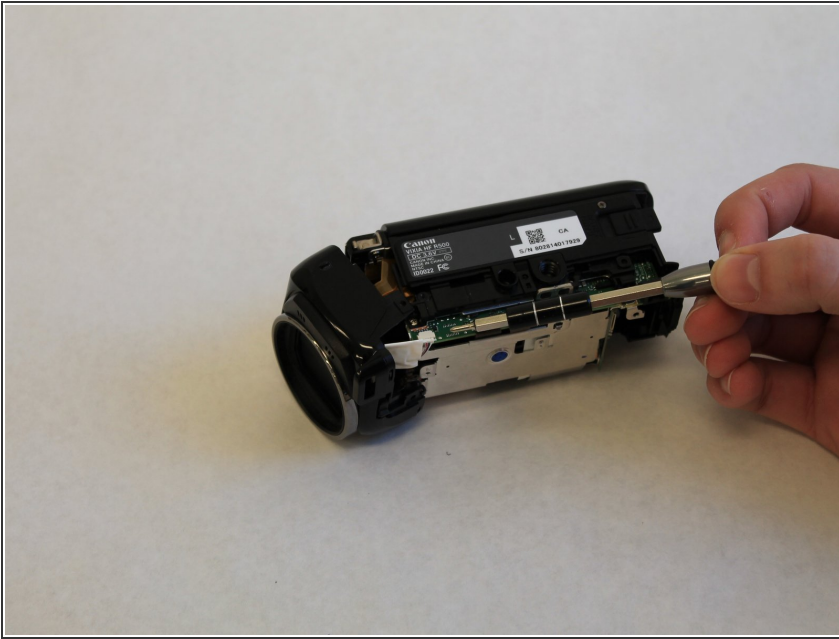
- Remove the two 5mm Phillips #000 screws near the LCD screen.

## Step 14



- Remove the single 5mm Phillips #000 screw located on the top of the camera near the lens cover.

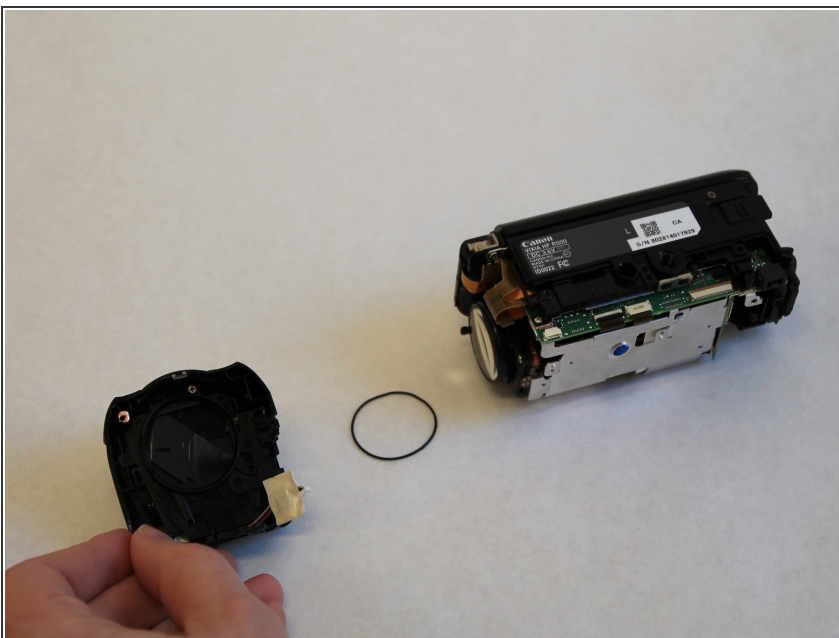
## Step 15



- Unplug the cord connecting the camera to the lens cover. Grip the white plug near the port and pull it out.

⚠ Do not pull the cord by the wires. Grip the white plastic plug.

## Step 16



- The lens cover is detached from the camera and can now be removed.
- Repair or replace damaged components in the lens cover.
- Ensure lens cover mechanism is free of debris.

To reassemble your device, follow these instructions in reverse order.