



# Cleaning the Cutting Blade

This guide will walk you through the steps of open your device and changing the cutting blade on your device.

Written By: William Ross Herring



## INTRODUCTION

This guide leads you through the process of opening up the LabelManager and cleaning the cutting blade. Keep in mind that the device has loose parts. Be careful and keep track of all parts.

## Step 1 — Cleaning the Cutting Blade



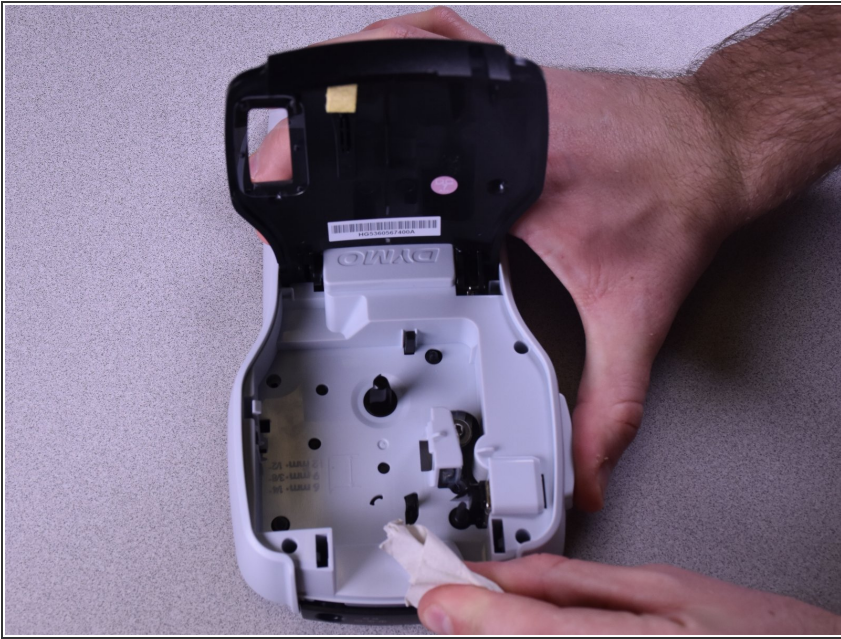
- Start by placing your device on its face.

## Step 2




- Open the label cartridge compartment and remove any current label cartridge to reveal your label cutting blade.

## Step 3



- Press down on the exterior button to protrude the blade outward. Once the blade is exposed simply use a microfiber cloth or cotton swab to clean off the blade. Be sure to use rubber cleaning gloves for added safety.

 Be careful, the blade is sharp!