



Rowenta AC6221 Teardown

This guide will simply teardown a Rowenta vacuum. I didn't want to disassemble totally it since I wanted it still works after that...

Written By: Bob



INTRODUCTION

I've found a vacuum in my utility room. Since I almost never use it, I thought it was a good idea to see how it works... So let's go!!

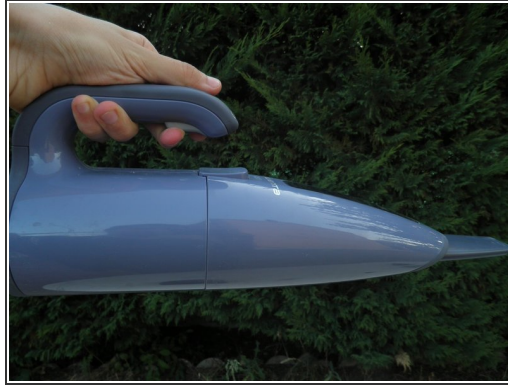
TOOLS:

- [Phillips #00 Screwdriver](#) (1)

Long handle necessary or else certain steps will not be able to be completed.

- [2.5 mm Flathead Screwdriver](#) (1)
-

Step 1 — Rowenta AC6221 Teardown



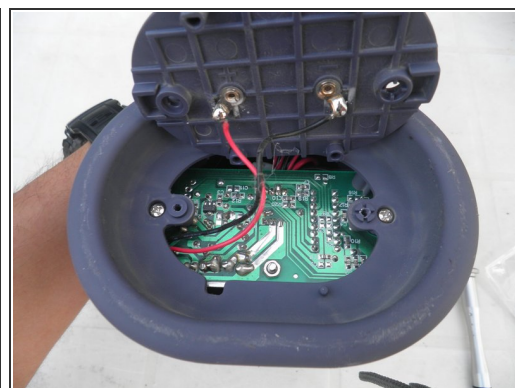
- The 4.8 Rowenta vacuum can be used for a variety of purposes.
- It is charged through its pedestal. The power of the pedestal is:
 - Input: 230V - 50 Hz - 7W (AC)
 - Output: 7.5V - 300 mA (DC)

Step 2



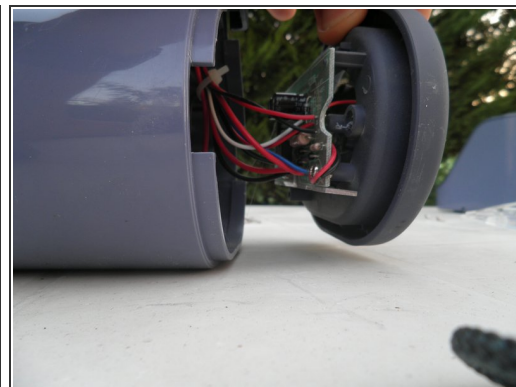
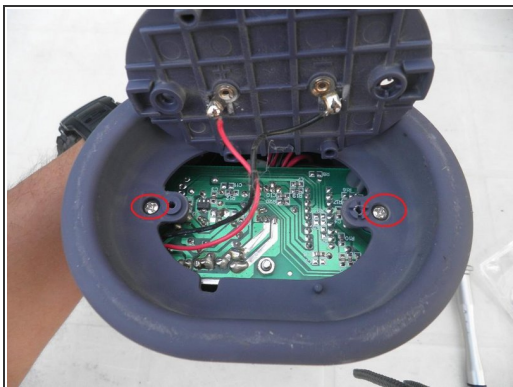
- This vacuum has several parts:
 - The tip
 - The reservoir which holds the dust and debris
 - The engine (4.8V)
 - The pedestal
 - The power supply
- From top to bottom, the reservoir contains 3 parts: the housing, container, and filter.

Step 3



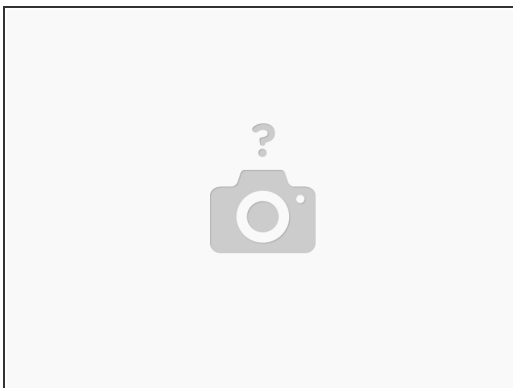
- Remove the two outer Philips #00 screws from the bottom of the engine.
- The back of the circuit board will now be visible.

Step 4



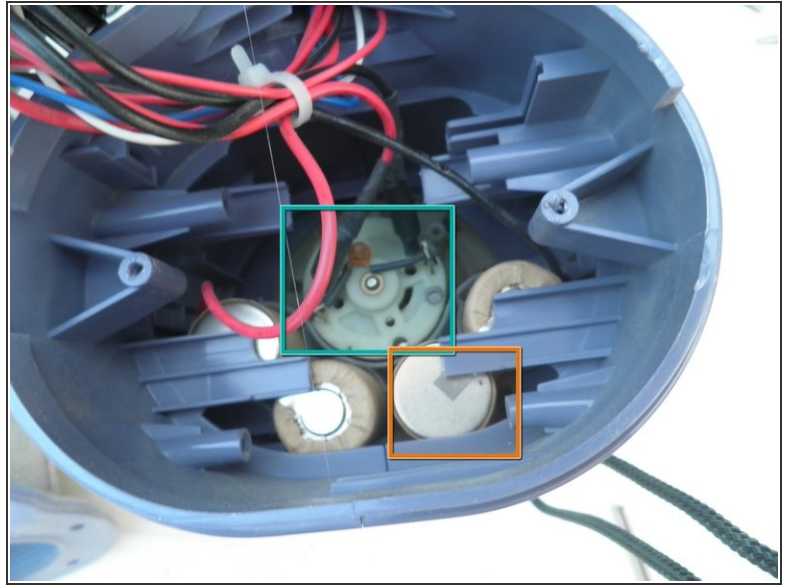
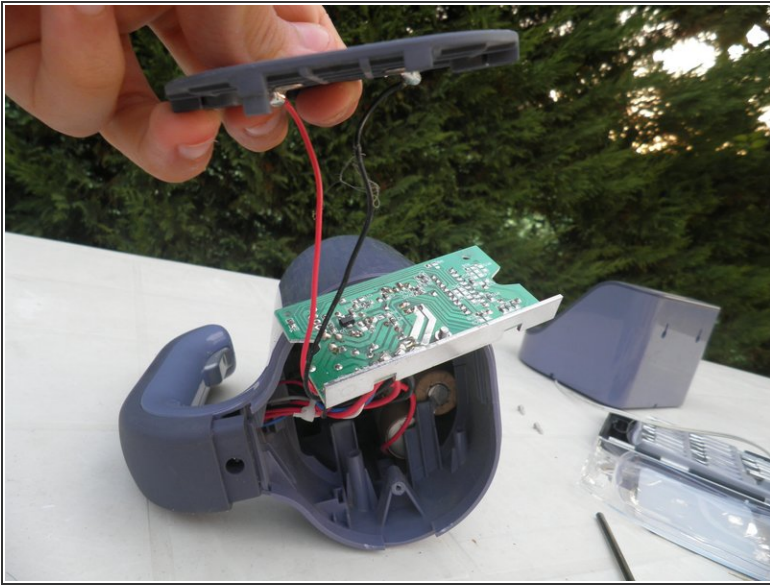
- Remove the two inner screws.
- Insert a flat screwdriver between the cover and the base of the engine and remove the cover.

Step 5



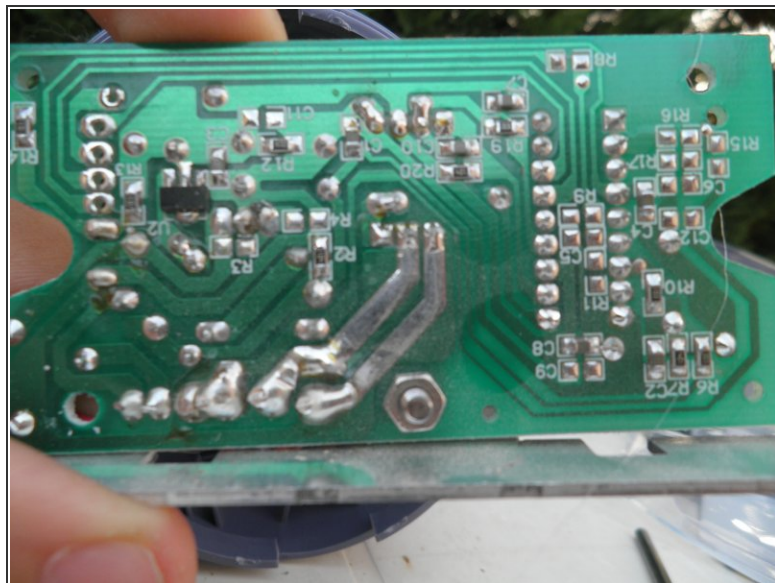
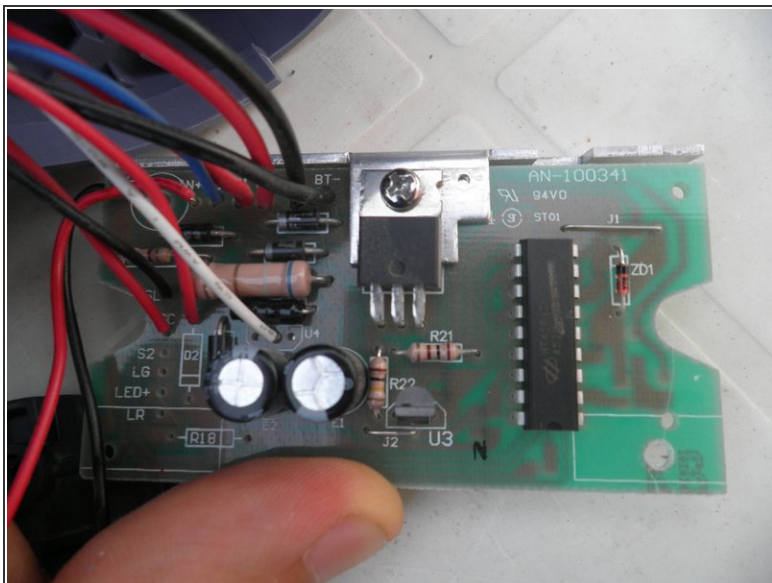
- The wires of the vacuum are now visible.

Step 6

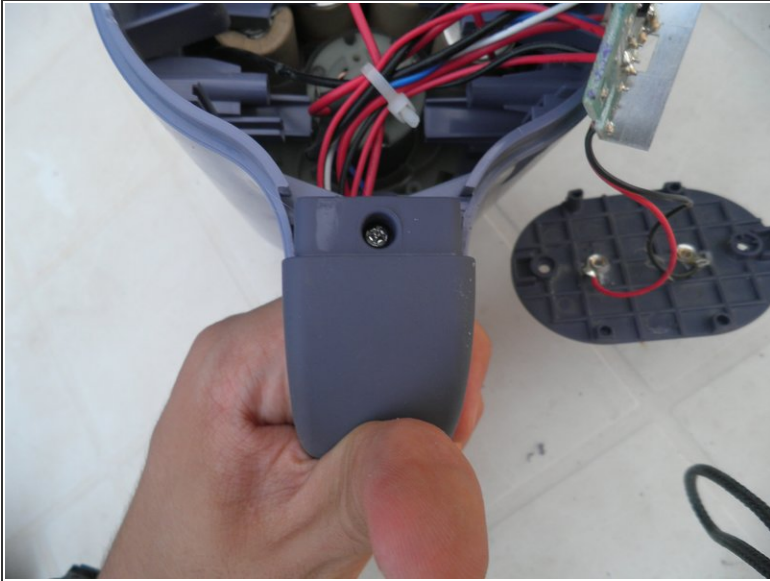


- The wires of the vacuum are now visible.
- The wires connect the charger light, switch, engine, and power wires.
- The green box labels the engine.
- The orange box labels one of the four batteries (4*1.2V)

Step 7



Step 8



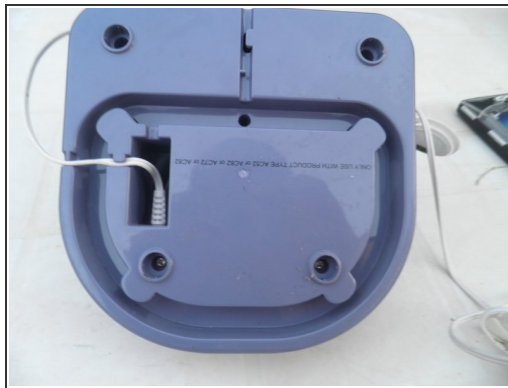
- Remove the screw securing the handle with a screwdriver.
- Open the handle to see the inside using the flat screwdriver.
- ⚠ Warning: The handle is difficult to open
- ⚠ Warning: In this procedure, the handle was not opened to keep the vacuum intact.

Step 9



- This is the pedestal that will be torn down.

Step 10



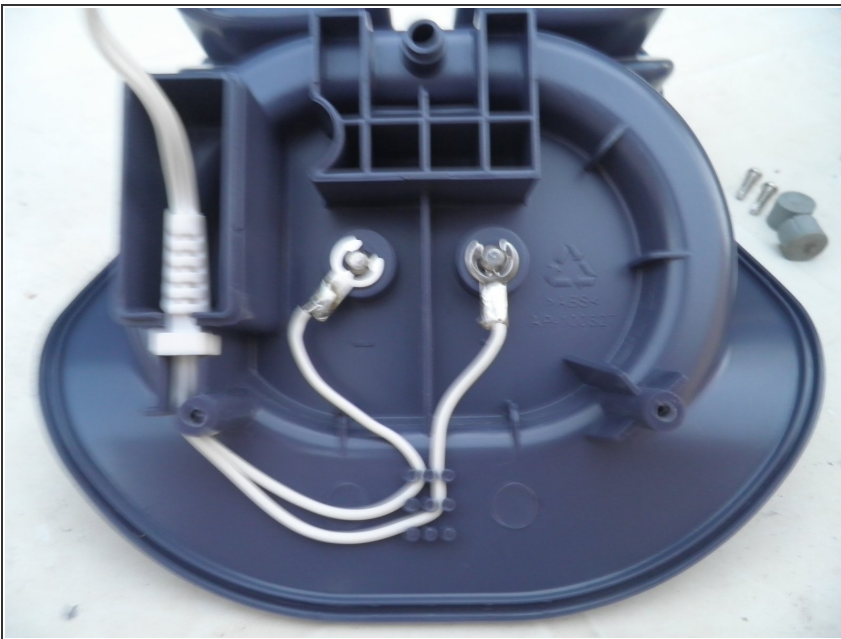
- At the bottom of the pedestal, remove the 4 rubber pieces.
- ⓘ Note: This step provides access to 4 Philips screws.
- Remove screws using a screwdriver.

Step 11



- Lift the plastic piece carefully from the bottom of the pedestal.

Step 12



- Inside the pedestal, the power cable separates into 2 wires. Each wire is connected to a conductive piece.
- This completes the vacuum cleaner teardown

To reassemble your device, follow these instructions in reverse order.