



Gateway Lt4004u Keyboard Key Replacement

This guide demonstrates how to replace and remove keyboard key from the keyboard.

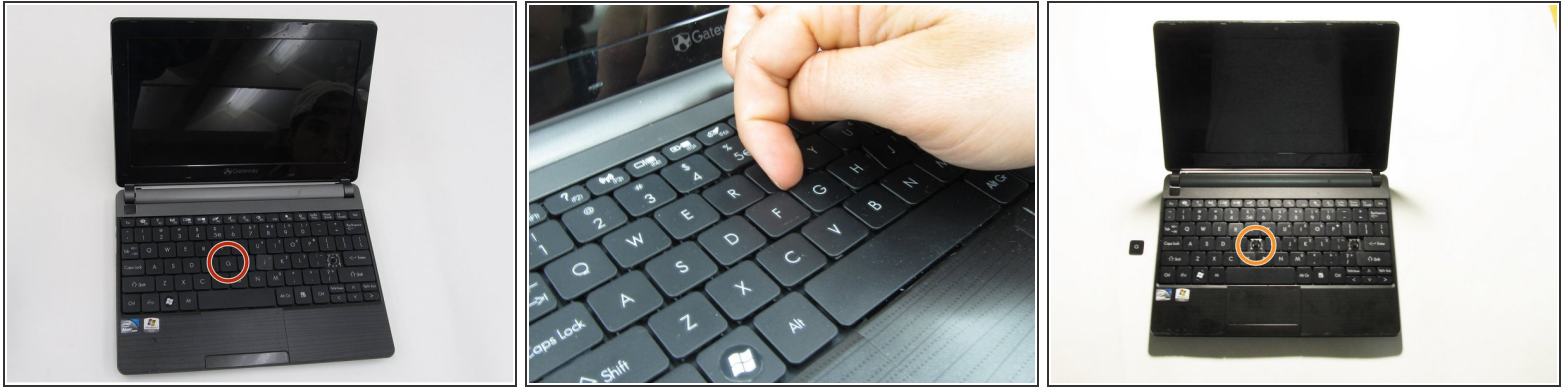
Written By: Alex Drohan



INTRODUCTION

Proper function of the keys is an essential aspect for efficient usage of this device. Take care with replacing keys and be sure to follow the instructions closely.

Step 1 — Keyboard Key



- Select desired key to replace.
- Place finger near corner of key and pull gradually until key is removed.

To reassemble your device, follow these instructions in reverse order.