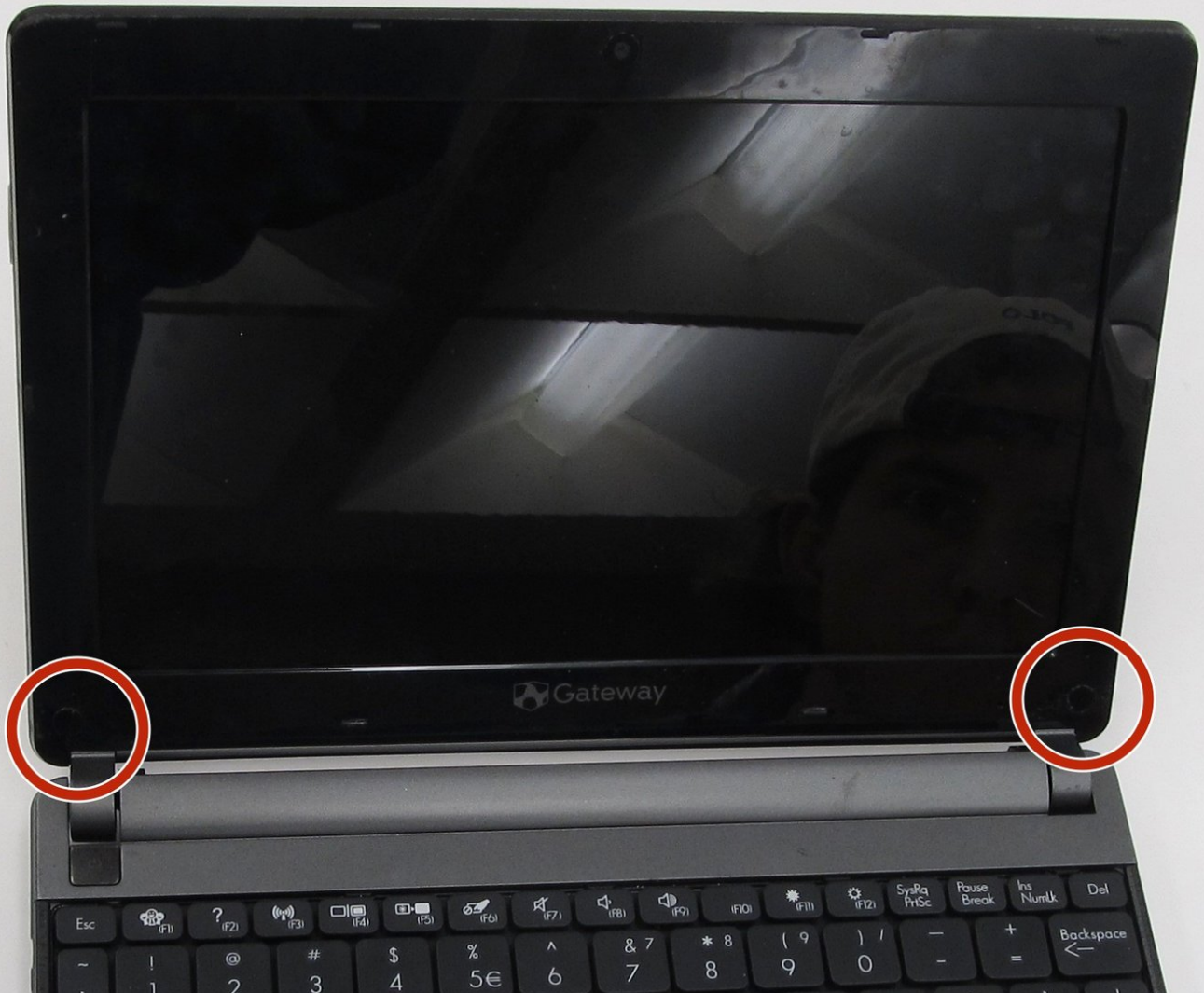




Gateway LT4004u Screen Replacement

This is a step-by-step guide for removing and replacing the Gateway LT4004u screen.

Written By: Carlisle Hiott



INTRODUCTION

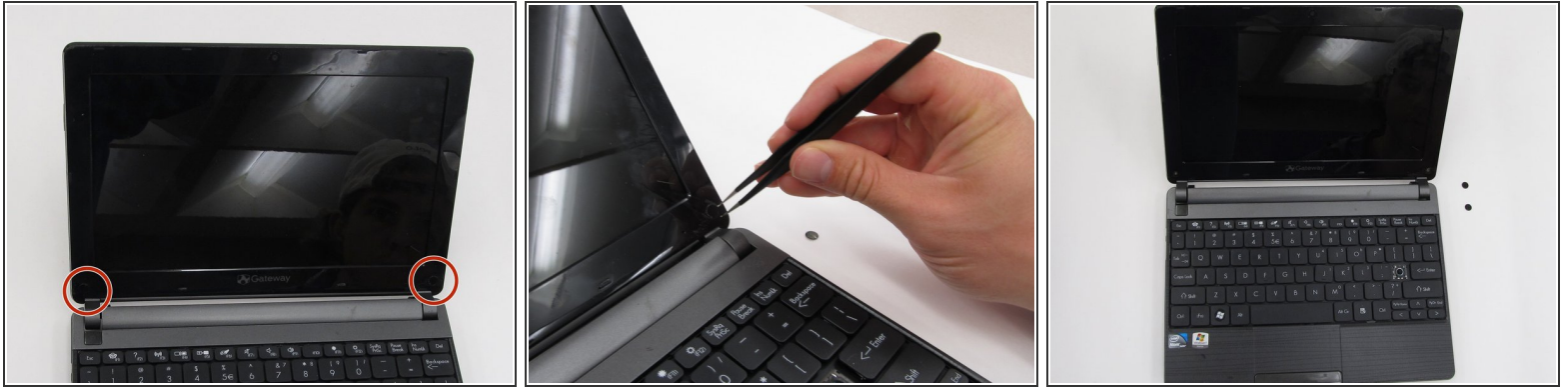
This is a moderately difficult process. The screen is an essential part of the computer and it is important to follow these steps with care to prevent unwanted damages to the device.



TOOLS:

- [Phillips #0 Screwdriver](#) (1)
 - [Tweezers](#) (1)
-

Step 1 — Screen



- Open the laptop so that the screen and keyboard are facing you.
- Remove the two screw covers at the bottom right and left corners of the screen using tweezers.

Step 2



- Unscrew the two 5.0mm screws underneath the screen covers on the left and right side and remove them from the laptop. For this step and the following steps, use a Phillips #0 head screwdriver.

Step 3




- Once the two screws are removed, pry the screen casing away from the screen. You can use your fingernails or a tool such as tweezers to separate the screen casing from the backing.

 Be prepared to hear cracking noises. These are expected.

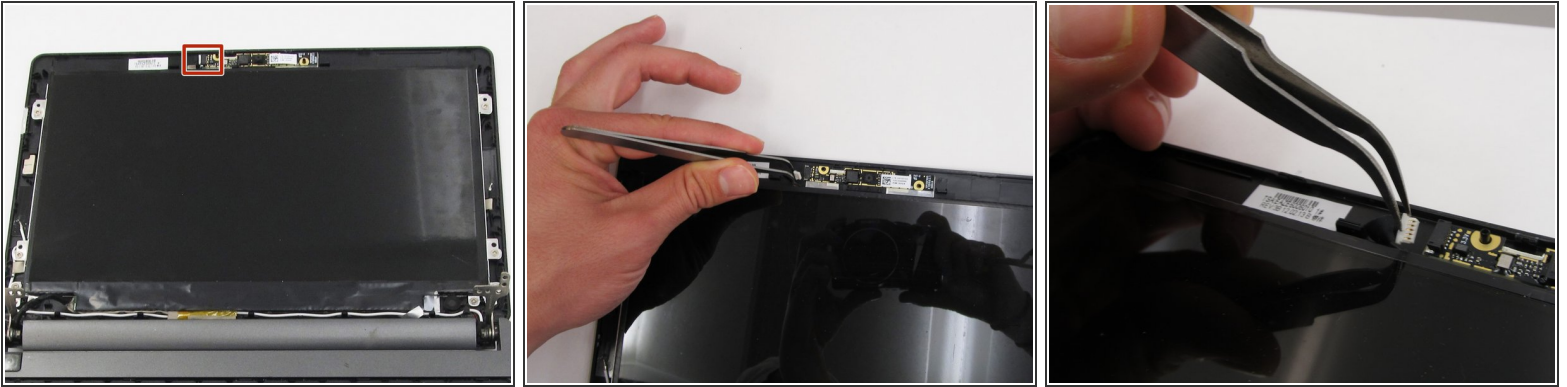
- Unhook the screen casing at the bottom of the screen from the central hinges on the left and right side connecting the screen casing to the keyboard.
- Remove the screen casing.

Step 4



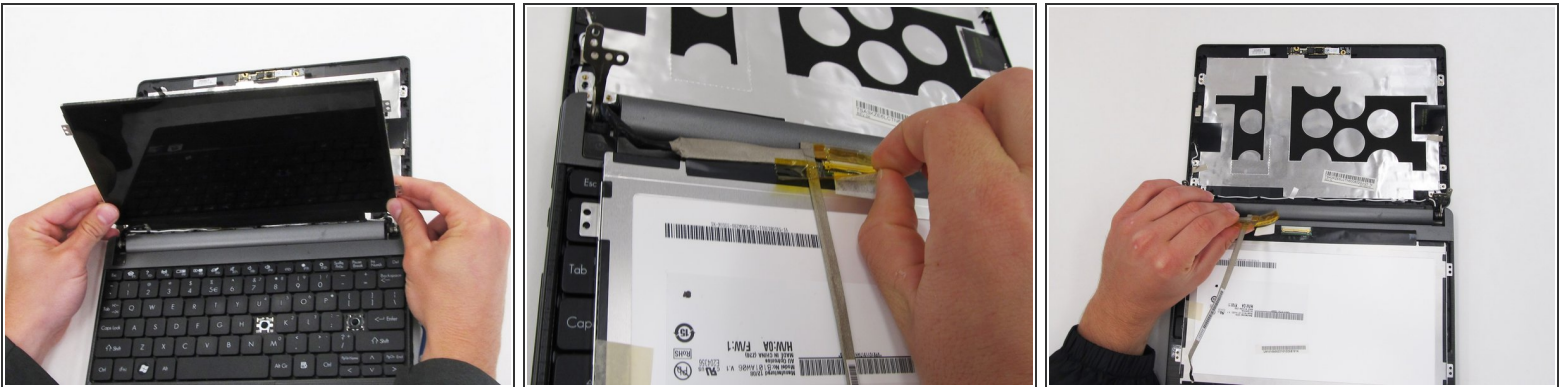
- Once the screen casing is removed, unscrew the 8 screws surrounding the screen and remove them from the laptop. All 8 screws should measure 4.0mm long.
-  There is a single screw in each red indicator and two screws in each orange indicator, totaling to the eight screws.

Step 5



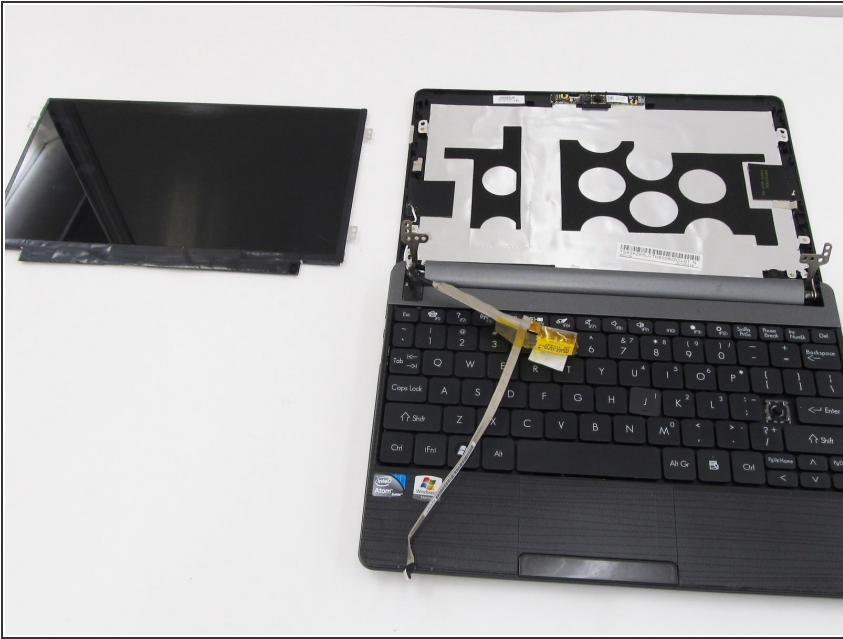
- Unplug the webcam connection from the top of the laptop screen backing.

Step 6



- Flip the screen over so that it is lying on top of the keyboard.
- Looking at the underside of the screen, remove the yellow tape and carefully remove the wires attaching the screen to the laptop.

Step 7



- Remove the screen from the rest of the laptop.

To reassemble your device, follow these instructions in reverse order.