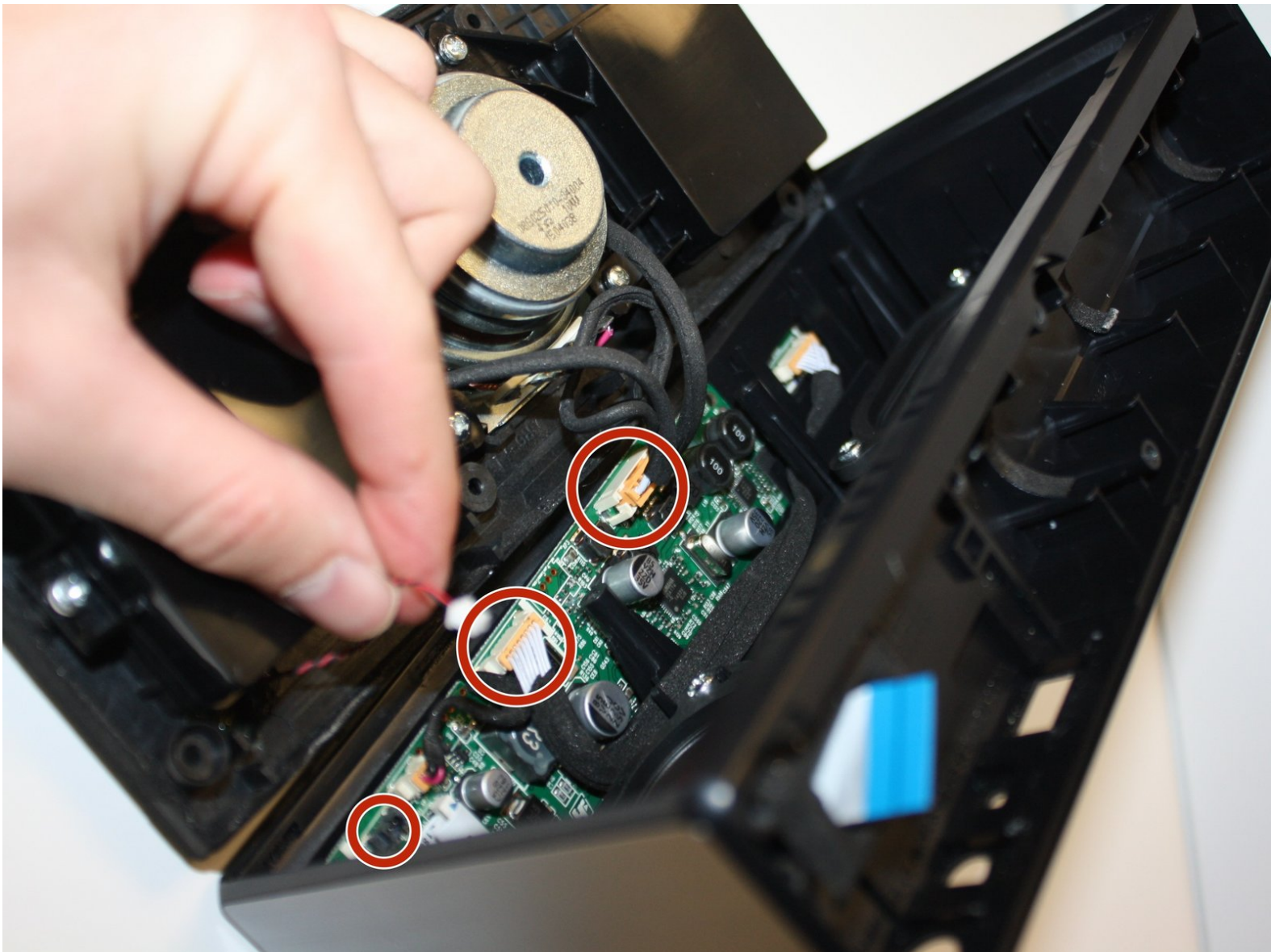




# Sony SRS-X55 Motherboard Replacement

Replace the motherboard of your Sony SRS-X55 speaker.

Written By: Jordon McDuffie



---

## INTRODUCTION

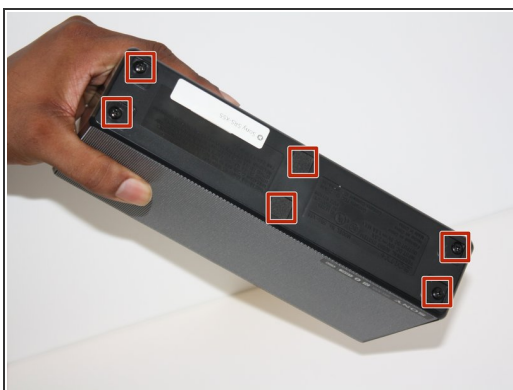
Use this guide to replace the motherboard of your Sony SRS-X55 speaker.



### TOOLS:

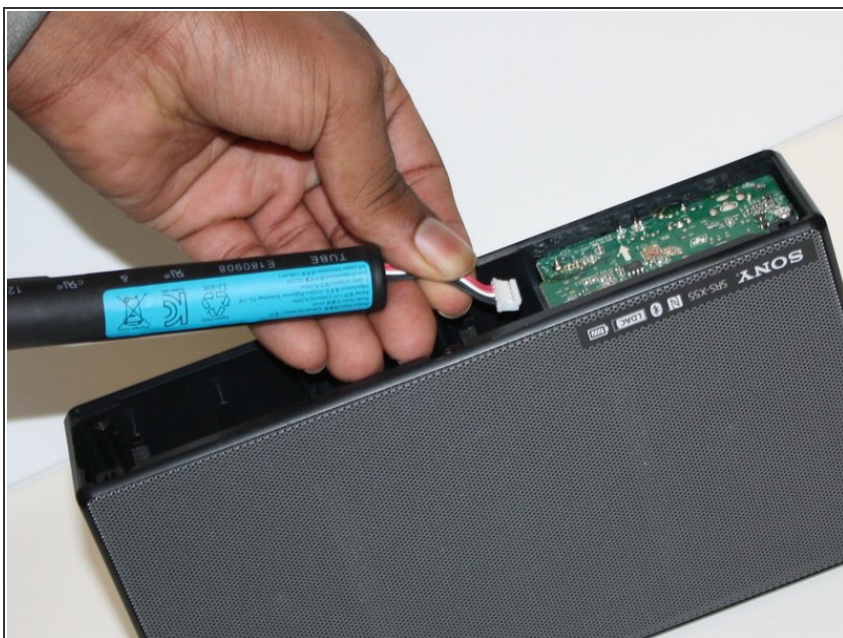
- [Phillips #1 Screwdriver](#) (1)
  - [Spudger](#) (1)
-

## Step 1 — Battery



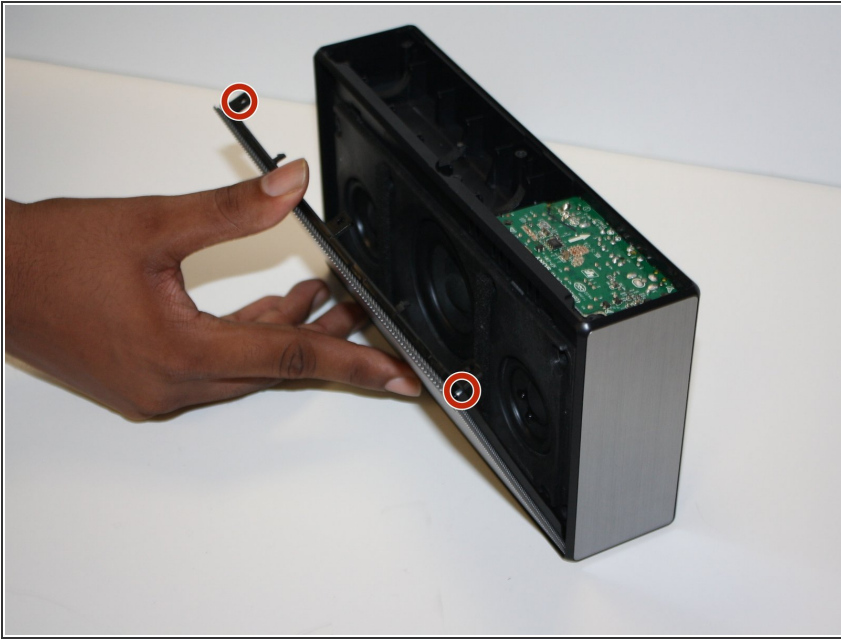
- Remove the six screw covers with a spudger.
- Remove the six 11 mm Phillips screws from the bottom panel.
- Remove the bottom panel of the speaker.

## Step 2



- Disconnect the battery cable from the motherboard.
- Remove the battery.

### Step 3 — Speaker Panel



- Remove the speaker grill by pushing on the two tabs in the corners.

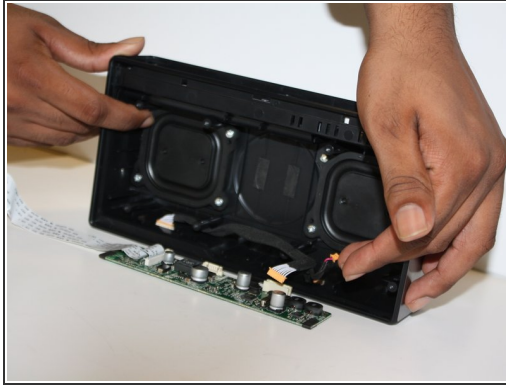
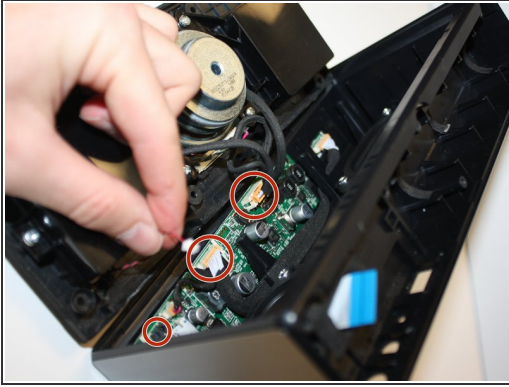
### Step 4



- Remove the eight 0.5mm Phillips #1 screws from the speaker panel.



## Step 5 — Motherboard



- Flip open the speaker panel to access the interior of the device.
- Carefully unplug the three cables and one ribbon connector connected to the motherboard.
- Remove the motherboard.

To reassemble your device, follow these instructions in reverse order.