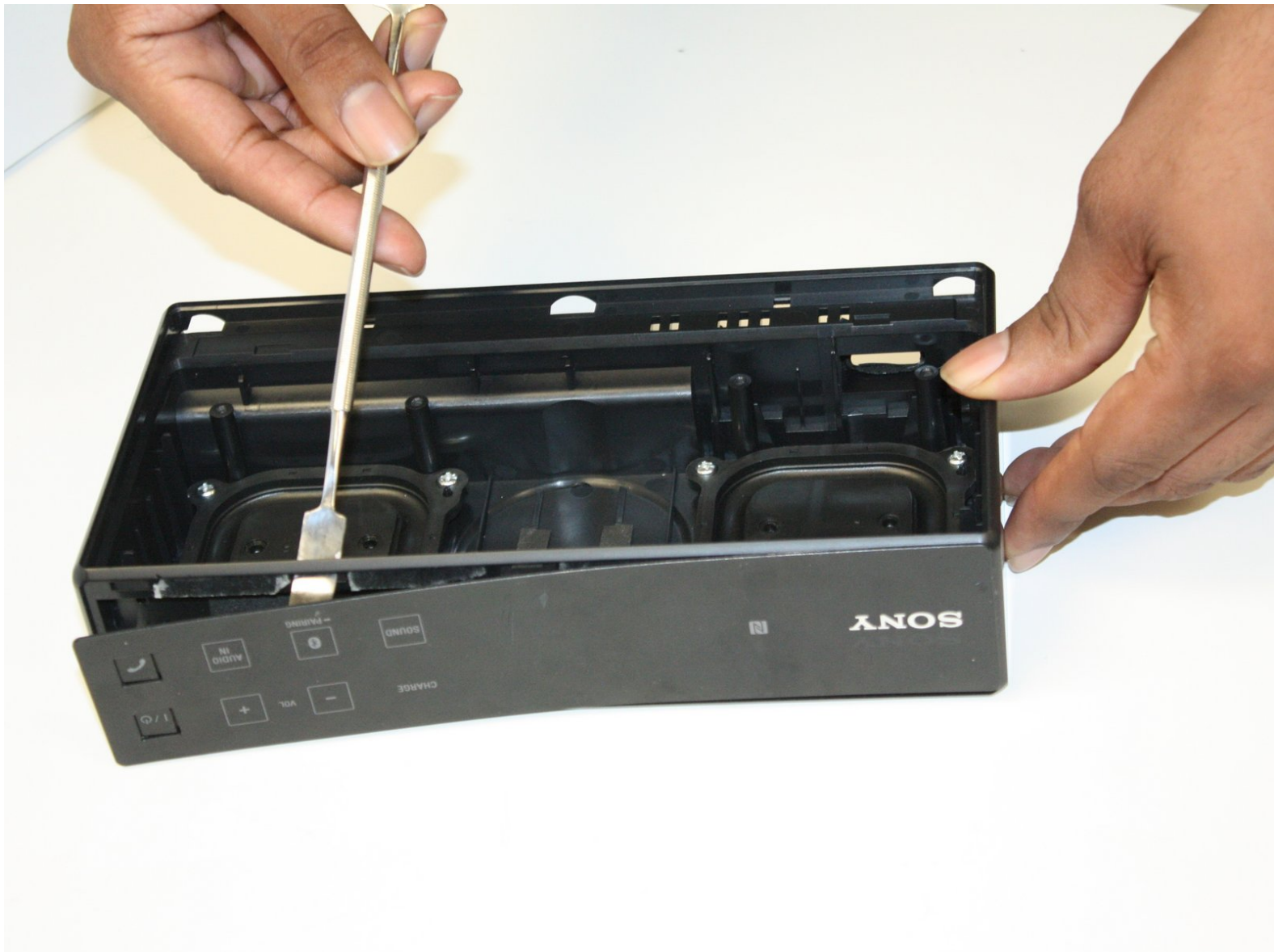




# Sony SRS-X55 Button Circuit Board Replacement

Replace the button circuit board of your Sony SRS-X55 speaker.

Written By: Crosby Taylor



---

## INTRODUCTION

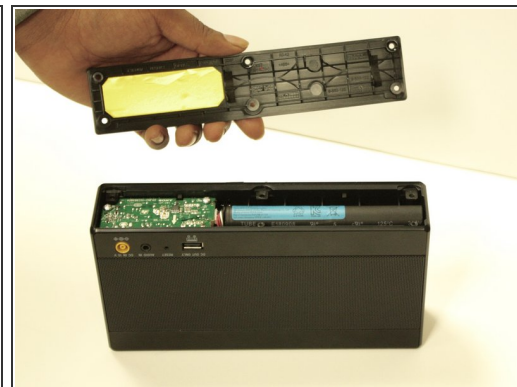
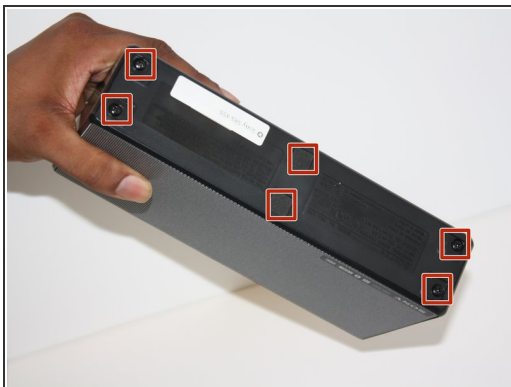
If the controls or indicator LEDs of your Sony SRS-X55 have stopped working, use this guide to replace the speaker's button board.

---

### TOOLS:

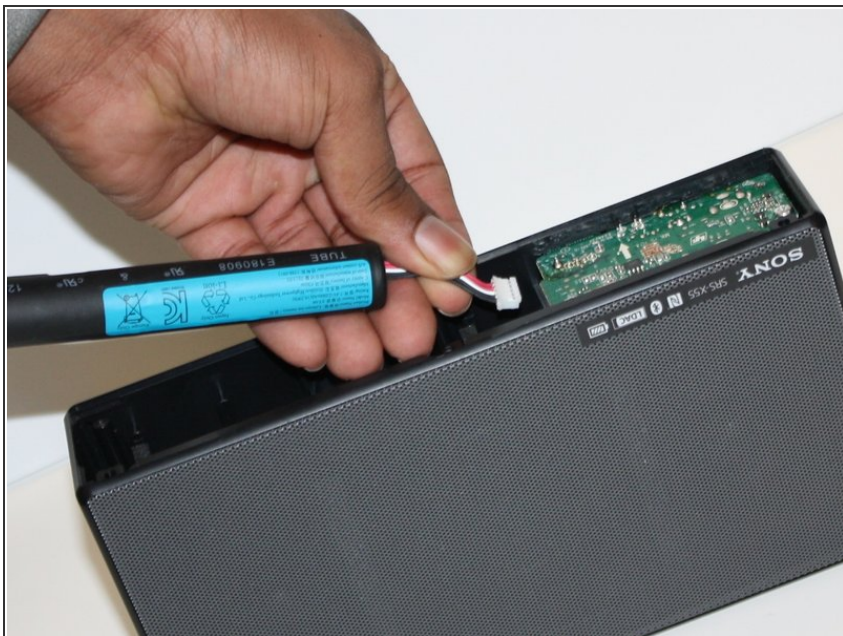
- [Spudger](#) (1)
  - [Metal Spudger](#) (1)
  - [Phillips #1 Screwdriver](#) (1)
  - [Phillips #000 Screwdriver](#) (1)
-

## Step 1 — Battery



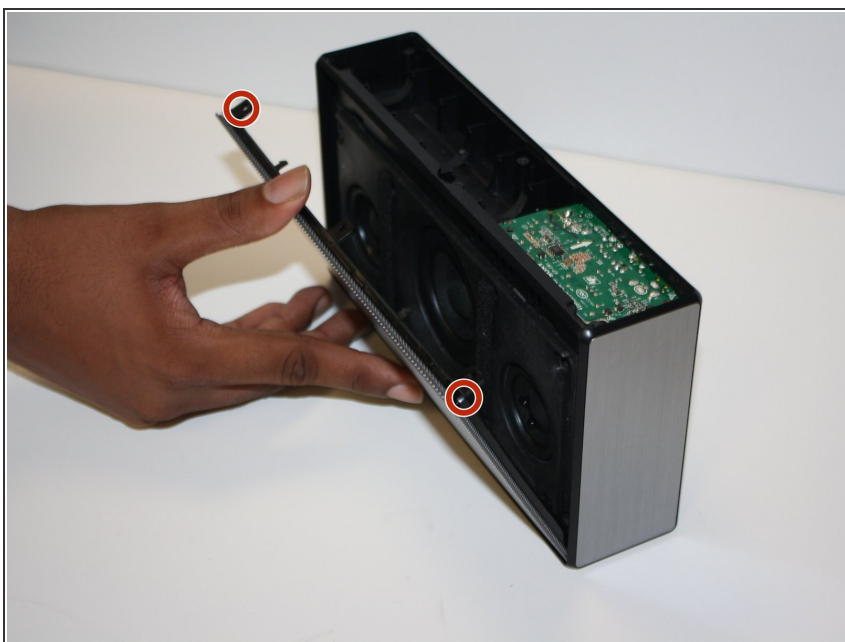
- Remove the six screw covers with a spudger.
- Remove the six 11 mm Phillips screws from the bottom panel.
- Remove the bottom panel of the speaker.

## Step 2



- Disconnect the battery cable from the motherboard.
- Remove the battery.

### Step 3 — Speaker Panel



- Remove the speaker grill by pushing on the two tabs in the corners.

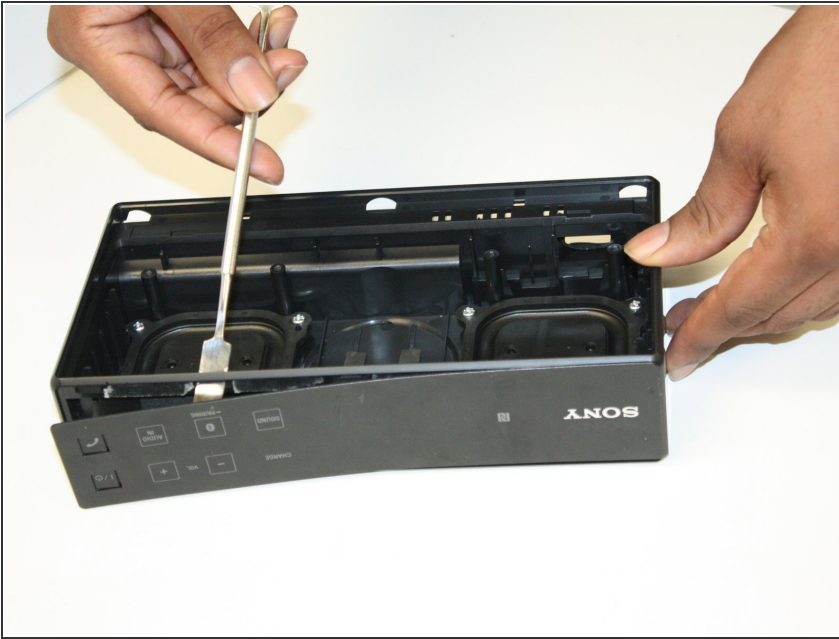
### Step 4



- Remove the eight 0.5mm Phillips #1 screws from the speaker panel.



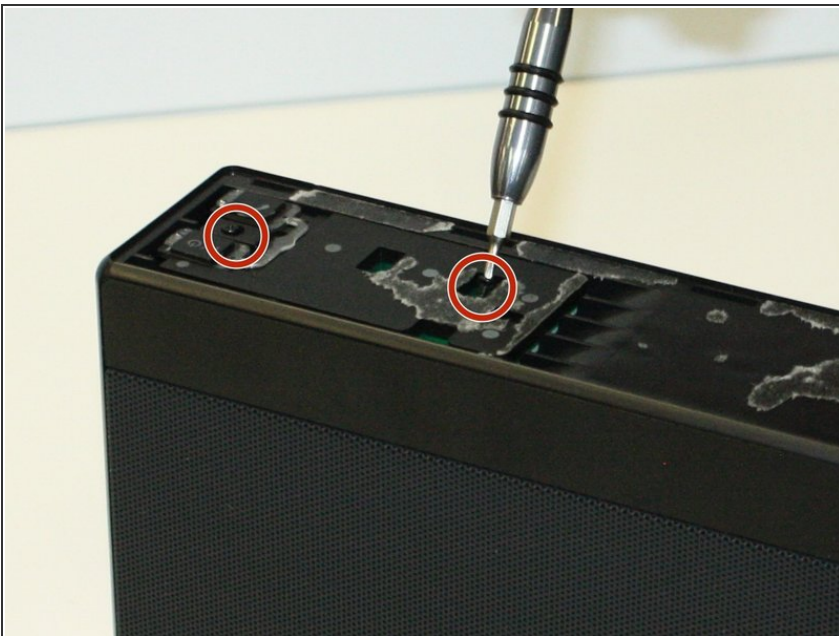
## Step 5 — Button Circuit Board



- Using the flat side of the metal spudger, apply pressure to underside of the cover to loosen the adhesive and separate the cover from the top of the speaker.

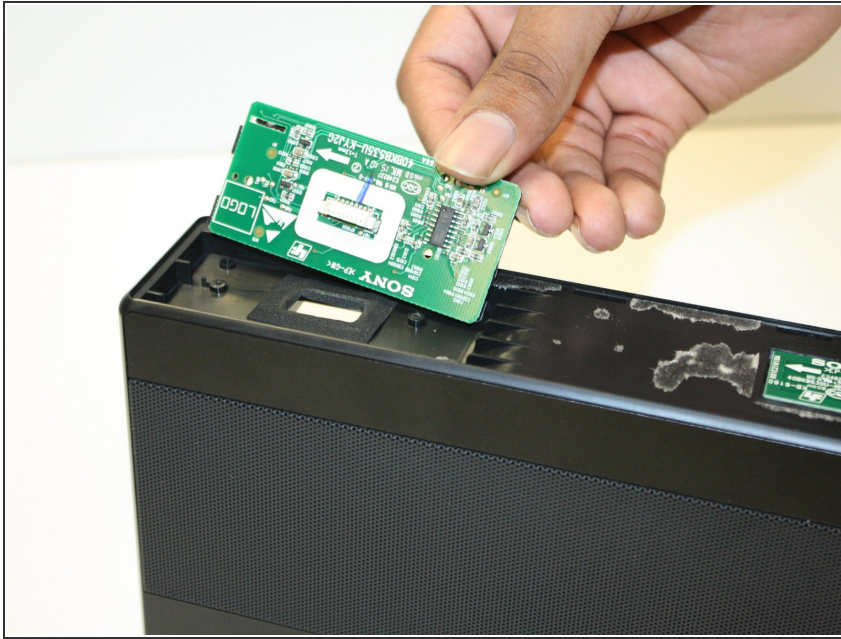
⚠ When working with electronics, it's important to choose a tool that's ESD-safe to avoid accidental damage to the device. The regular black nylon spudger or a plastic opening tool should be used whenever possible.

## Step 6



- Using the Phillips #00 screwdriver, pull out the three screws keeping the button board in place.

## Step 7



- Remove the button board from the speaker.

To reassemble your device, follow these instructions in reverse order.