



Fujifilm FinePix S1 Back Camera Body Replacement

Remove the back of camera body to get to innards of camera.

Written By: Brandon Benavente





TOOLS:

- [Spudger](#) (1)
- [iFixit Opening Tools](#) (1)

Step 1 — Back Camera Body



- Remove the 7 screws on the perimeter of the camera body.

Step 2



- Remove the flash accessory cap.
- Remove the spacer covering the screws under the flash accessory cap.

Step 3



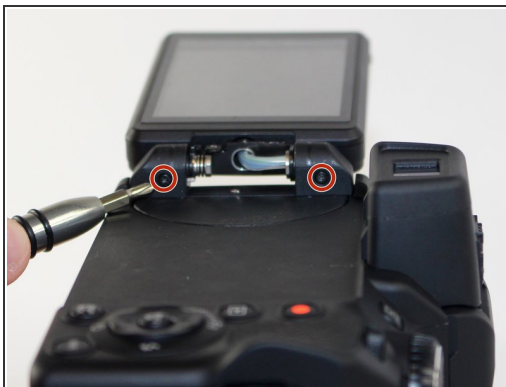
- Remove the 4 screws from the inside of the flash accessory slot.
- Pull off the flash accessory slot.

Step 4



- Remove the screw from LCD Screen hinge cover.
- Remove the LCD Screen hinge cover.

Step 5



- Remove the 3 screws located on the LCD screen hinge.
- Remove the caps from both ends of the LCD screen hinge by lifting them off.

Step 6



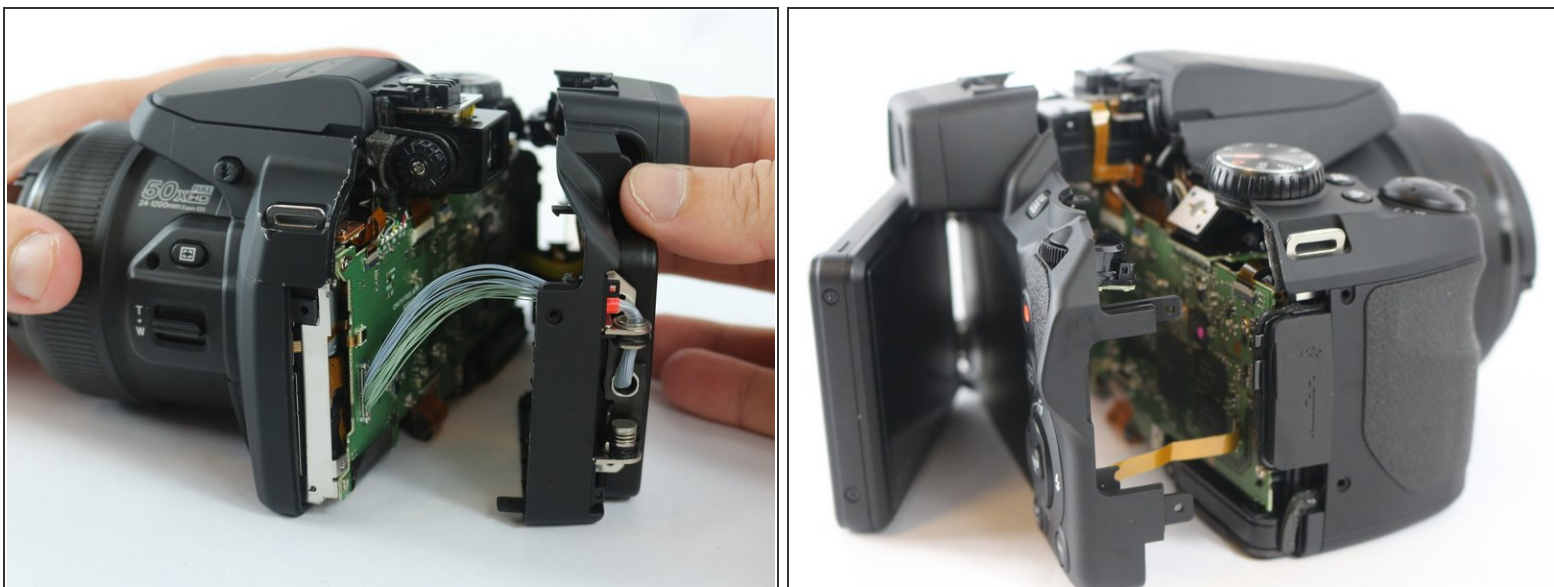
- Remove the 2 screws from under the LCD hinge caps.

Step 7



- Pry apart the back body from the rest of the camera.

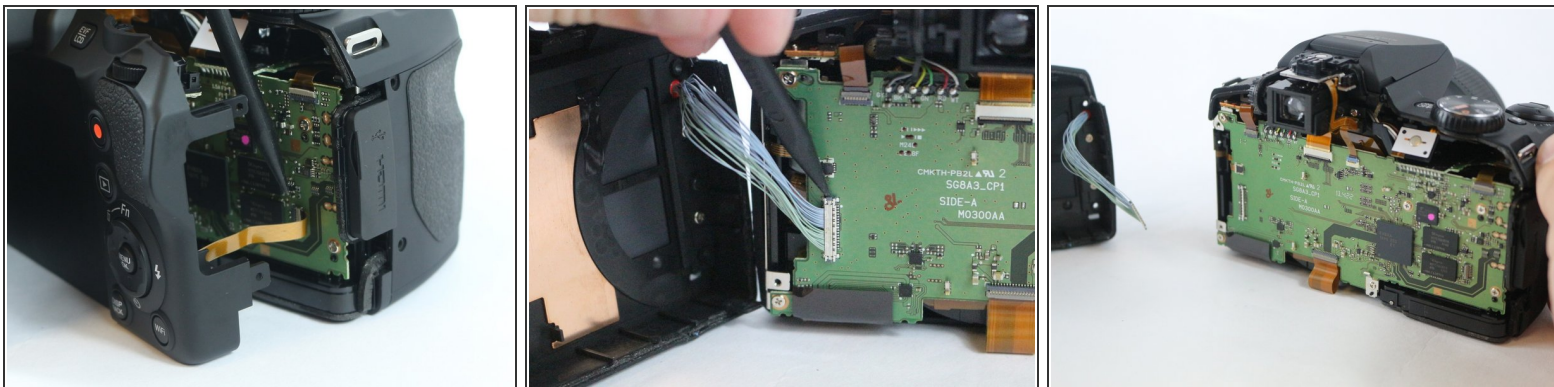
Step 8



- Carefully pull the back body off of the camera.

⚠ Make sure to not yank off the connections from the body to the motherboard.

Step 9



- Use a spudger to lift up on the tab, releasing the yellow wire strip.
- Use a spudger to lift up on the side tab, releasing the blue wire connection.

To reassemble your device, follow these instructions in reverse order.