



# Keurig K40 Open/Close Sensor Replacement

This guide will replace the open/closed sensor.

Written By: jonathan



# INTRODUCTION

In this guide the user will open the top unit of the Keurig and replace the sensor that tells the device if the head unit is open or closed.



## TOOLS:

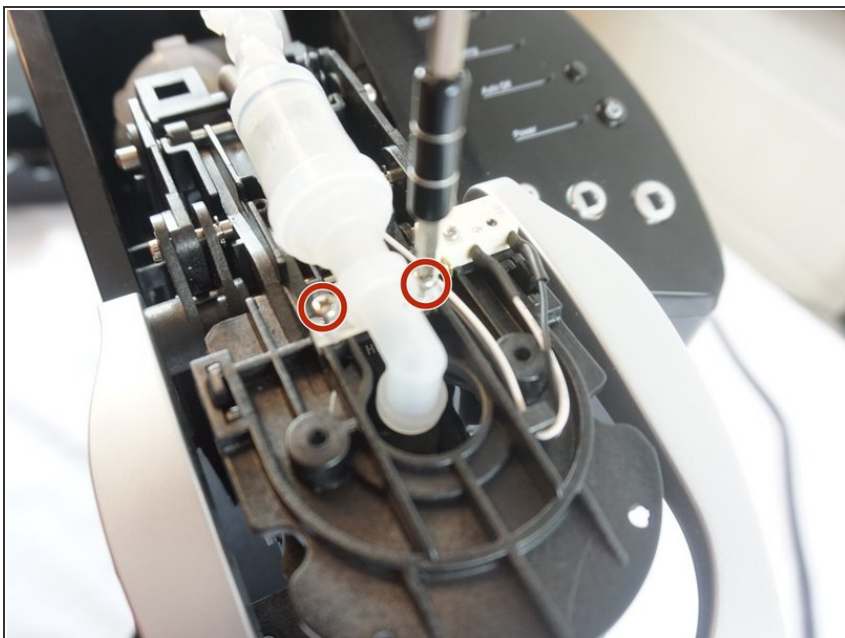
- [Phillips #0 Screwdriver](#) (1)
  - [Portable Soldering Iron](#) (1)
-

## Step 1 — Top Water Pump



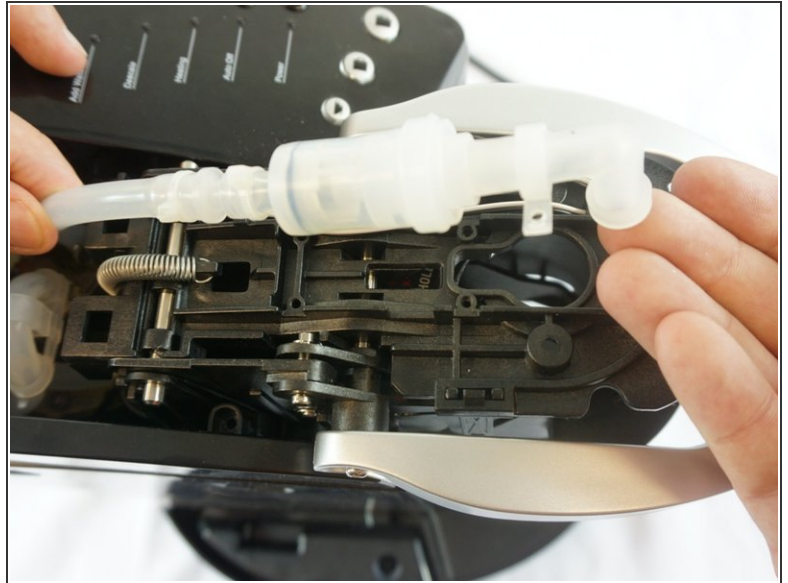
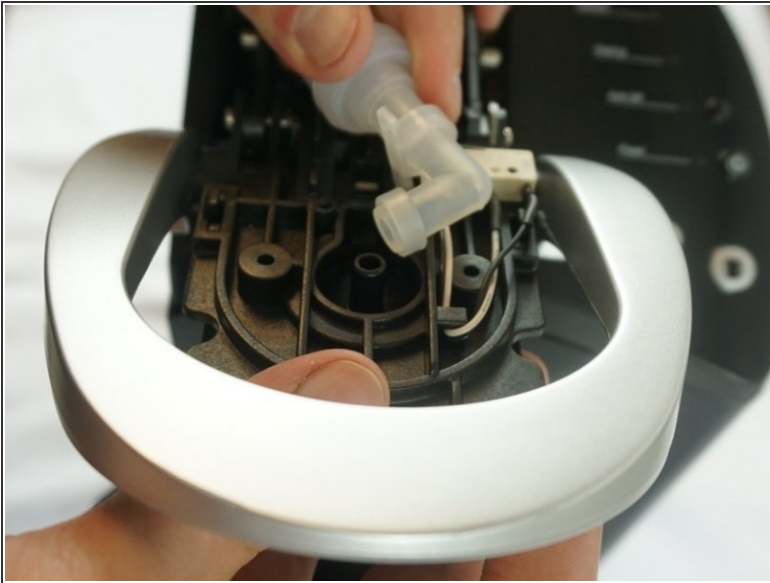
- Begin by removing the top cover from the device.
- ⓘ Remove the cover by gently rocking it back and forth with an emphasis on lowering the left side underneath an internal peg.

## Step 2



- Unscrew both 1.5mm screws located on the water pump.

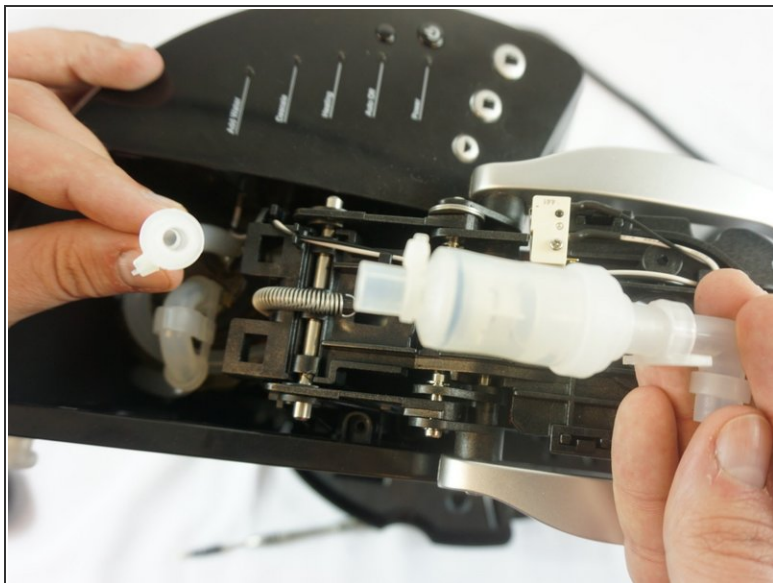
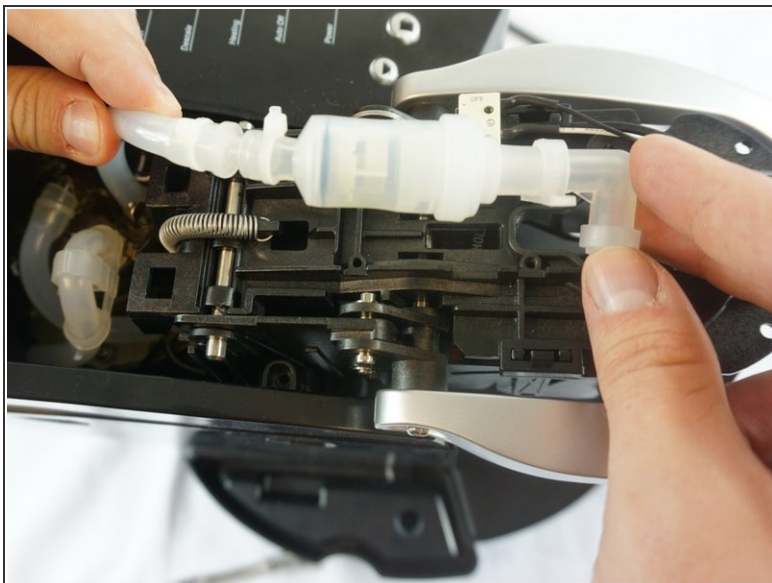
## Step 3



- Keeping one hand firmly placed on the device, tug upwards on the water pump until it is separated from the device.
- The water pump and pipe should now be loose and easy to move as shown.

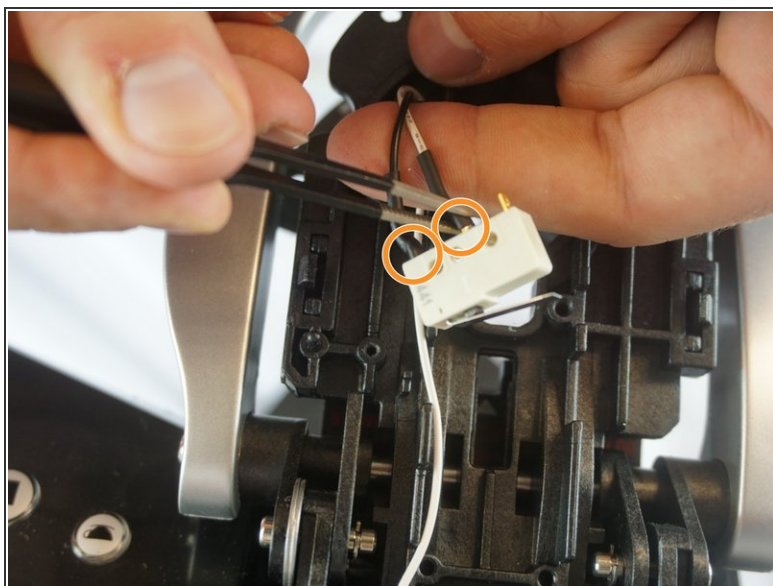
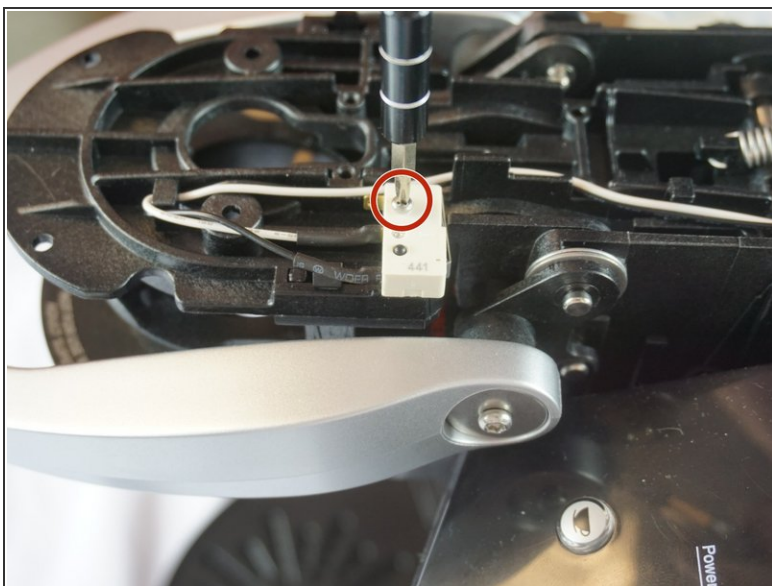


## Step 4



- Pull on the point where the pipe meets the water pump.
- The pipe will come loose and the water filter will be free and ready to be replaced.

## Step 5 — Open/Closed Sensor



- Using a #2 Philips head screwdriver remove the 1.2mm screw holding the sensor in place.
- Locate where the connections are soldered to the sensor

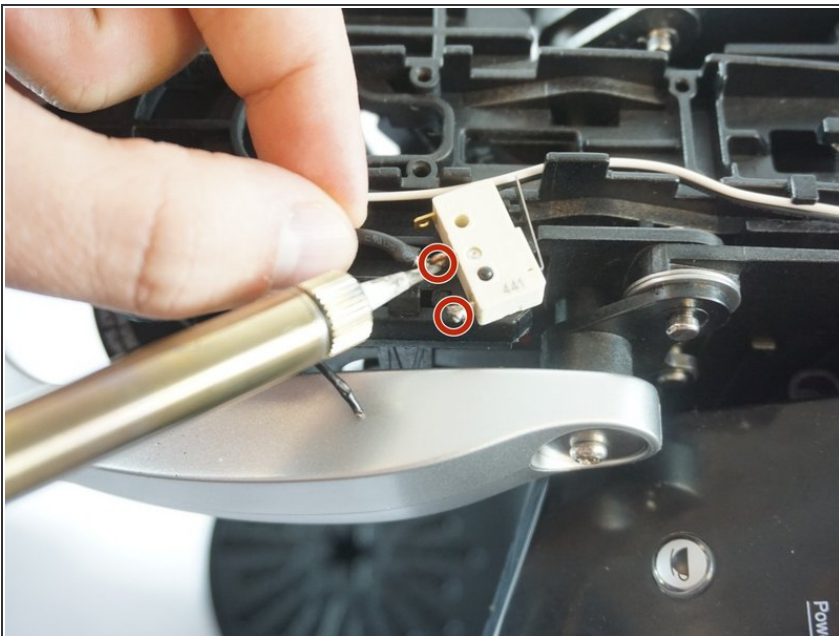
## Step 6



- Melt the solder that is connected to the sensor.

⚠ Be careful to avoid any rubber and try to only contact the metal making the connection.

## Step 7



- Put the replacement sensor back on the post that holds it and begin to solder the two metal connections back to the sensor.

⚠ Be careful not to touch the end of the soldering iron.

To reassemble your device, follow these instructions in reverse order.