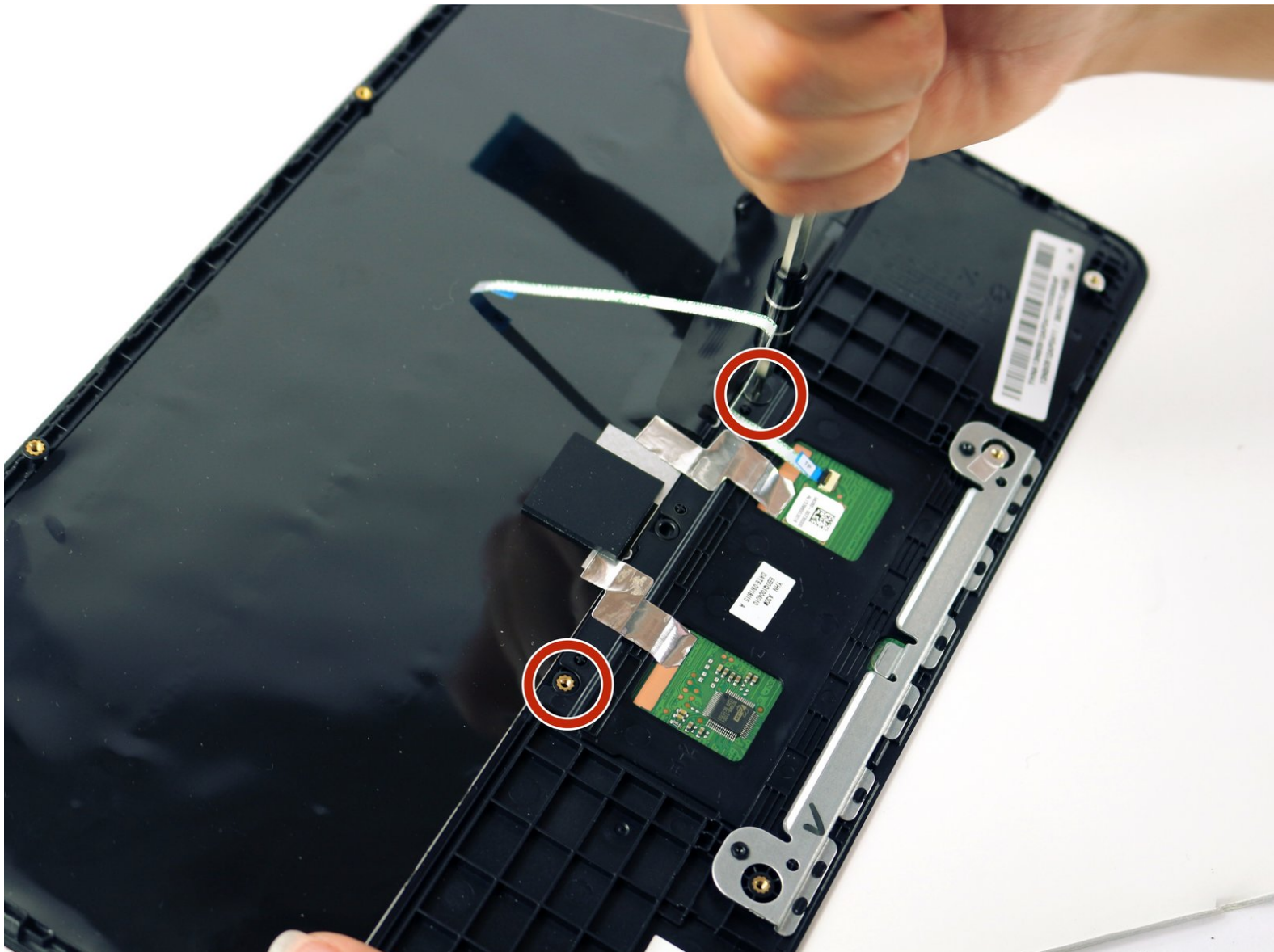




Asus Chromebook C201 Keyboard Replacement

Details the procedure for removing the keyboard.

Written By: Robert Lawson



INTRODUCTION

If your Chromebook's keyboard is not working correctly, then this guide is going to help you get your keys working the way they're suppose to. When working on replacing your keyboard, be sure to ground yourself. Static can short circuit your Chromebook, so be sure to either wear an anti-static wrist strap or work on a surface that doesn't generate static electricity, like wood, tile, or other hard floors.



TOOLS:

- [Metal Spudger](#) (1)
 - [iFixit Opening Tools](#) (1)
 - [64 Bit Driver Kit](#) (1)
-

Step 1 — Palm Rest Assembly



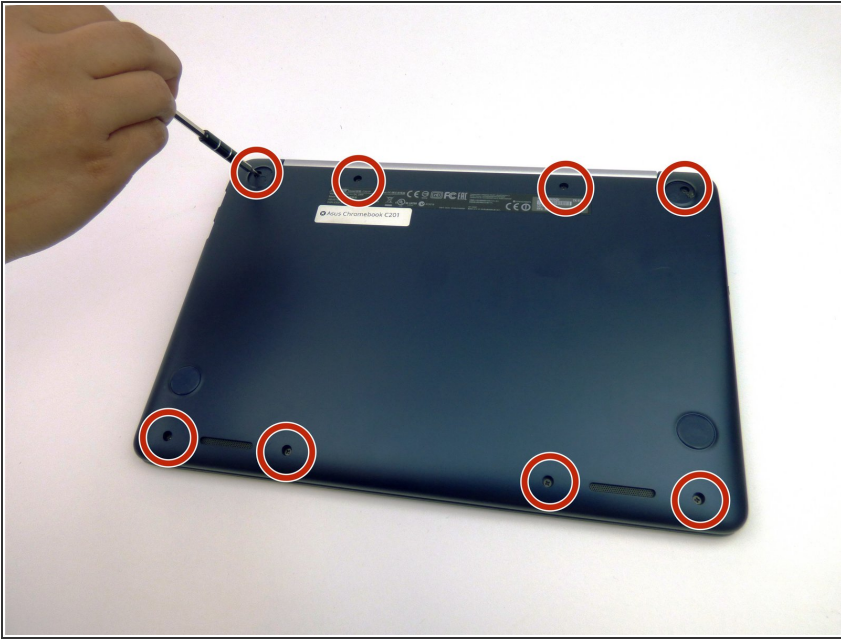
- Flip the laptop upside down with the rear end of the computer away from you.

Step 2



- Remove the two rear rubber feet by using one of the small, blue plastic spudgers.

Step 3



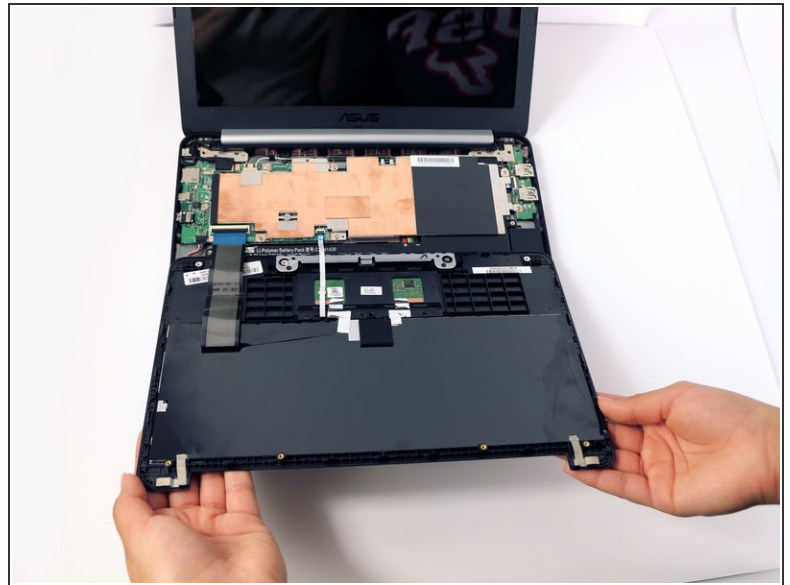
- Use the J0 screwdriver to remove the eight 5mm black screws on the bottom of the laptop, which includes the two that were hidden under the rear rubber feet.

Step 4



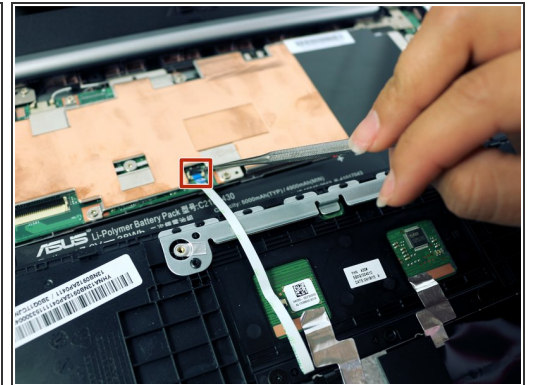
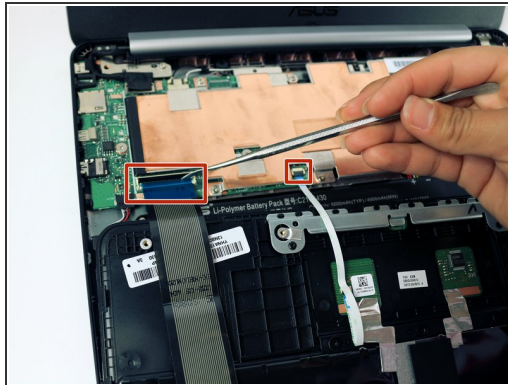
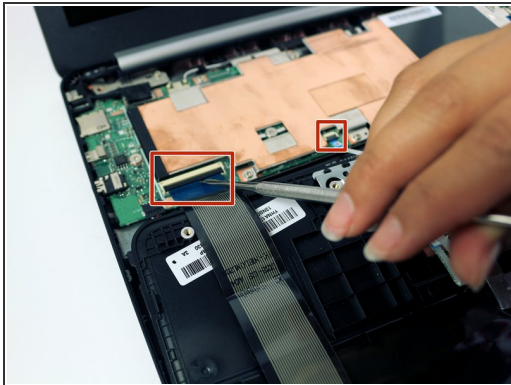
- Turn the laptop on its side. Use a small, blue opening tool to pry the keyboard cover and laptop apart. Begin from the top right, next to the power button, and slowly work your way around to the opposite side until the keyboard cover is detached.

Step 5



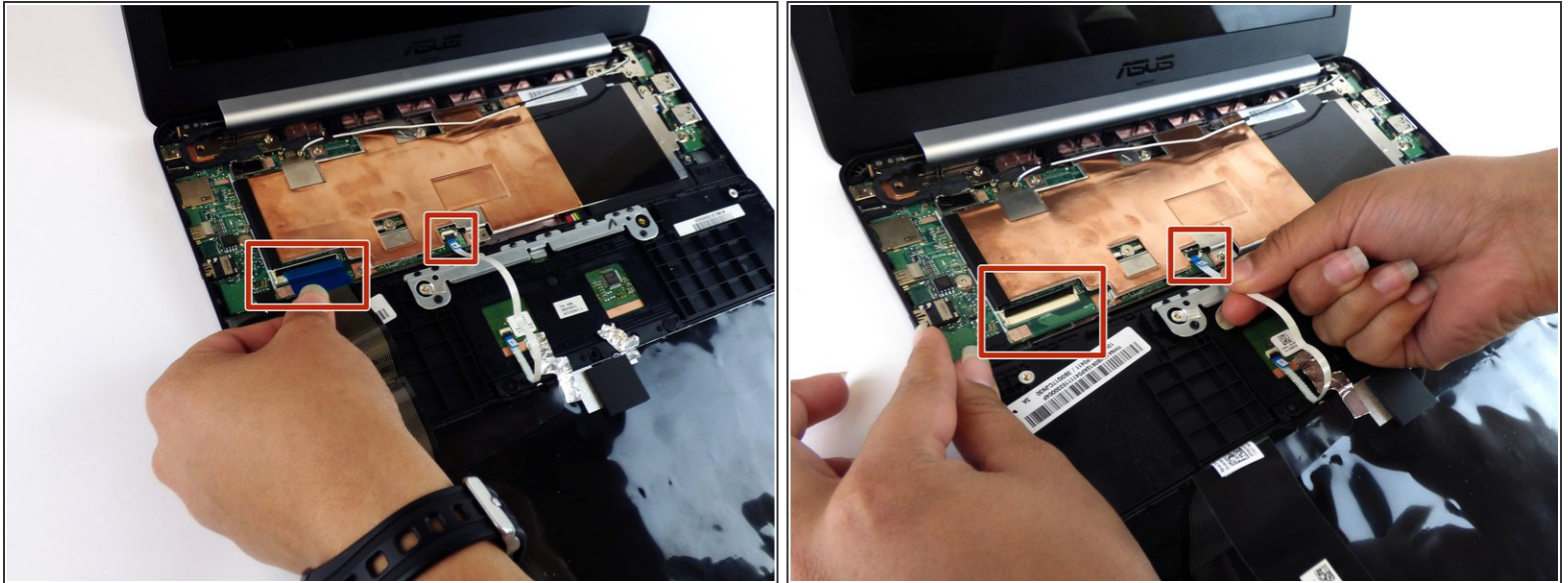
- Gently flip the keyboard cover away from the laptop. Rest it safely upside down so the cables are not strained and are easily accessible.

Step 6



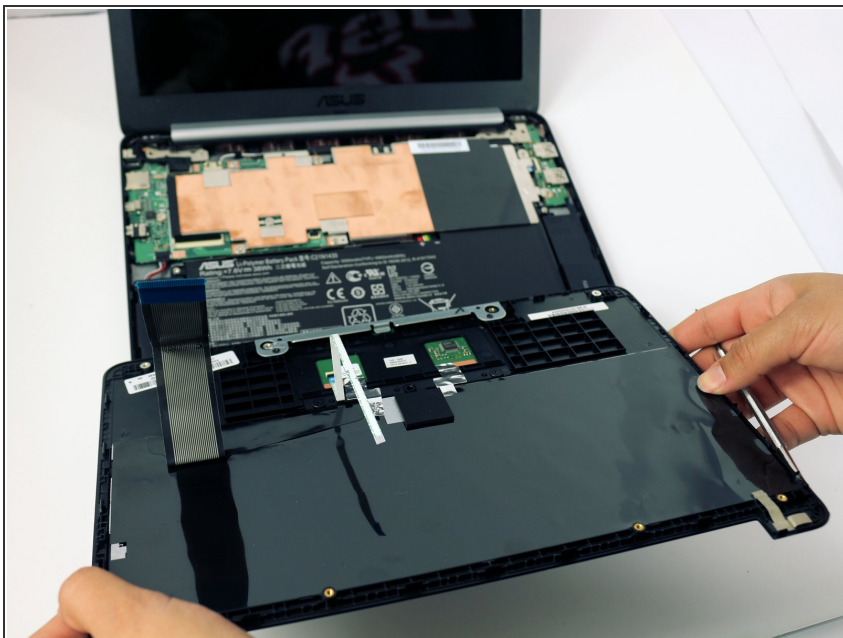
- Use the metal spudger to gently pry up the small tabs that are clamping down on the keyboard cables.

Step 7



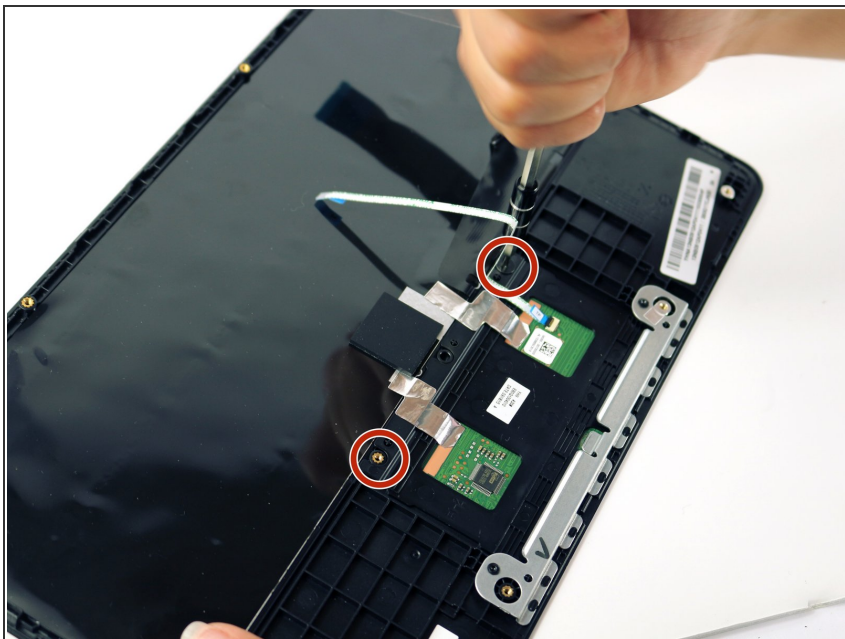
- Carefully pull the keyboard cables out of the connecting ports that are attached to the motherboard.

Step 8



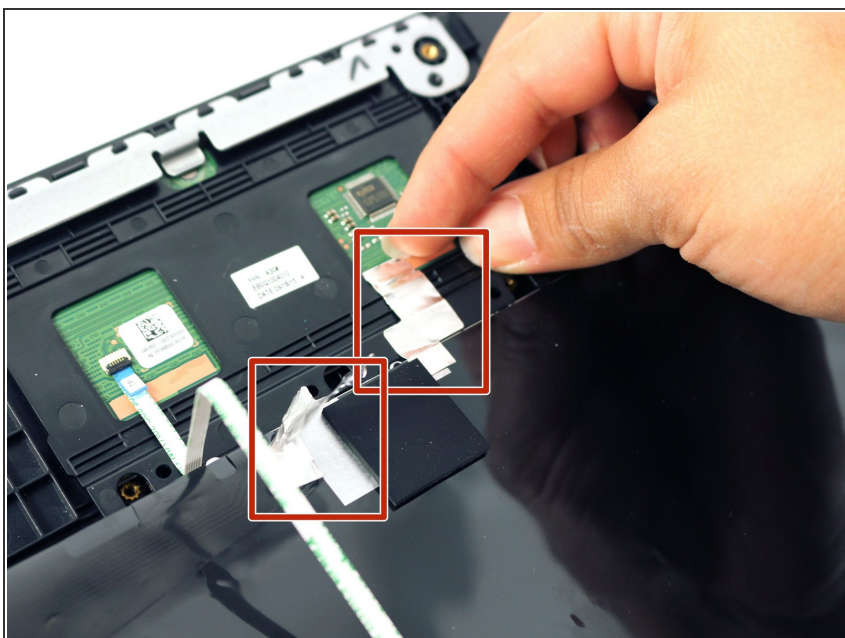
- Remove the keyboard cover and safely place it somewhere face down.

Step 9 — Keyboard



- Use a J0 screwdriver to remove the two 3mm JIS 0 keyboard screws.

Step 10



- Pull the tape connecting the keys from the palm rest assembly.

Step 11



- Gently, with force, pop the keyboard from the palm rest assembly.

To reassemble your device, follow these instructions in reverse order.