



VTech Learning Tunes Karaoke Power Button Replacement

This will show you how to replace the power button.

Written By: Gamuchirai Chifamba



INTRODUCTION

Having issues turning on and off the Vtech Learning Tunes Karaoke? Follow this guide to solve the problem.

TOOLS:

- [Flathead Screwdriver](#) (1)
 - [Phillips #2 Screwdriver](#) (1)
 - [Phillips #1 Screwdriver](#) (1)
-

Step 1 — Power Button



- To remove the battery door, loosen the 4mm screw using a Flathead screwdriver.

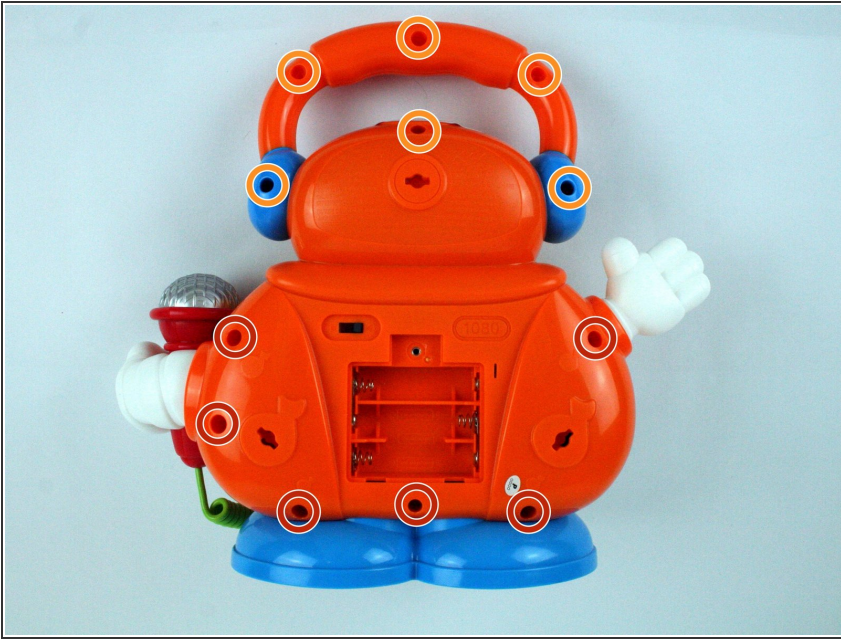
ⓘ A coin can also be used to loosen the screw

Step 2



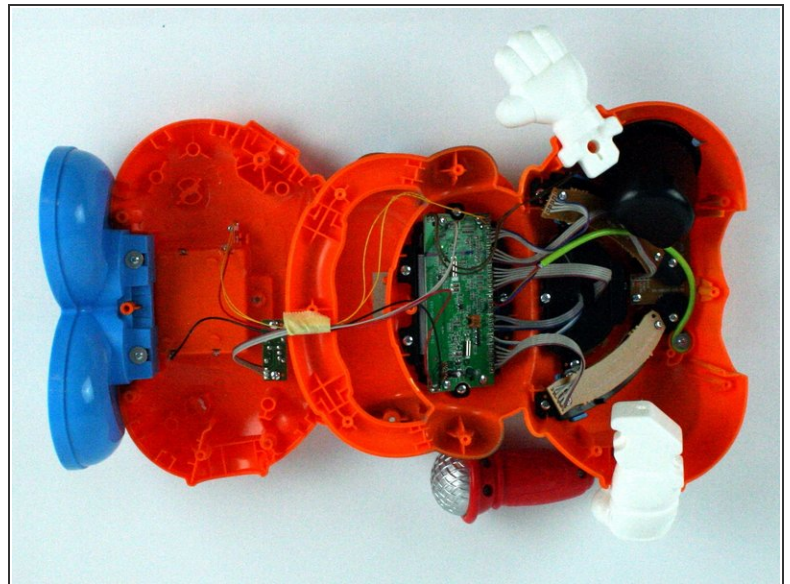
- Remove the battery door and take out the batteries.

Step 3



- Remove the six 9.5 mm Phillips #2 screws.
- Remove the six 6.0 mm Phillips #2 screws.

Step 4



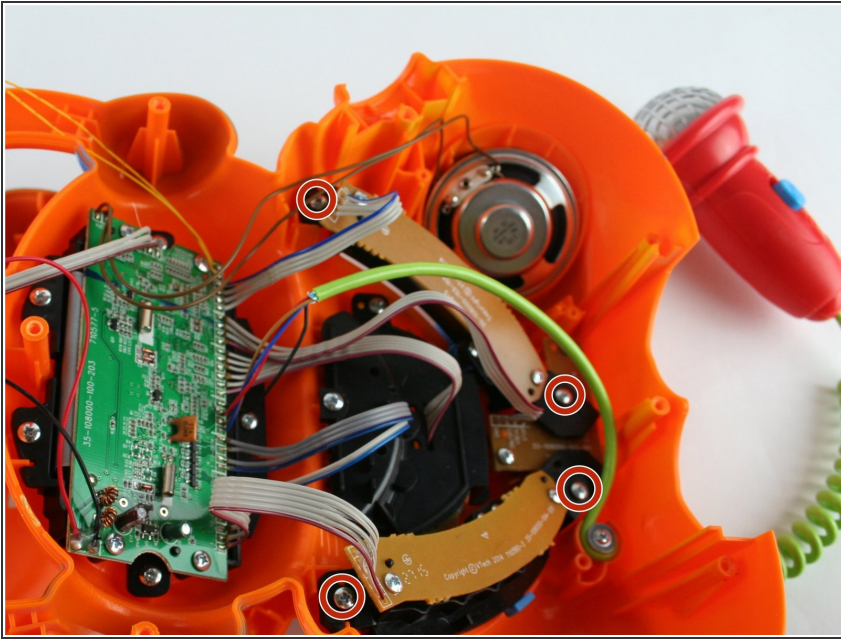
- Gently pull up on the rear panel.

⚠ Be careful to not pull on the wire connections.

- Gently place the back panel underneath the top panel with the tops facing each other, as shown in the picture.

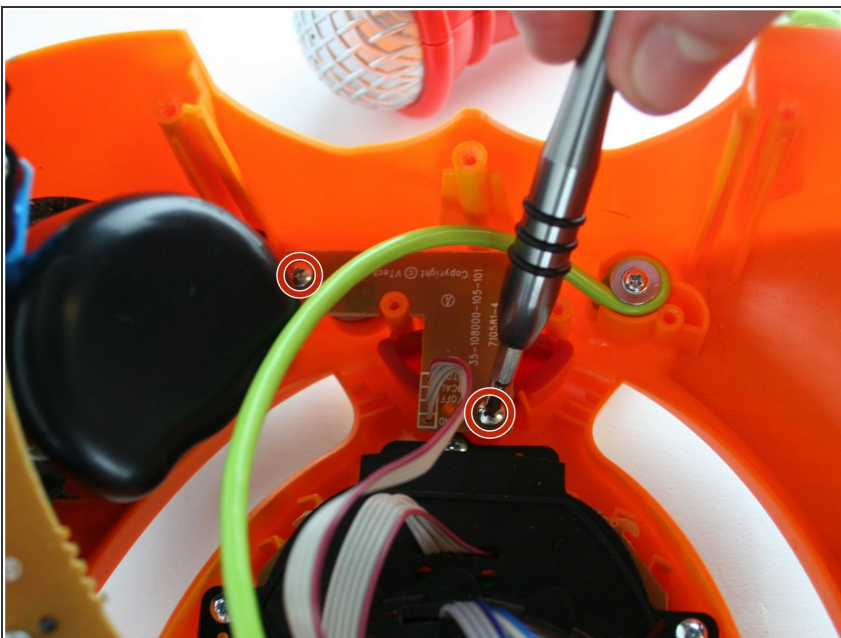
This document was generated on 2020-11-19 07:18:22 PM (MST).

Step 5



- Remove four 7.9 mm screws from the mode selector and voice selector trays.

Step 6



- Remove the two 5.6 mm screws from the power button board.

Step 7



⚠ Carefully move the power button board out of the way.

- From here you can replace the button.

To reassemble your device, follow these instructions in reverse order.