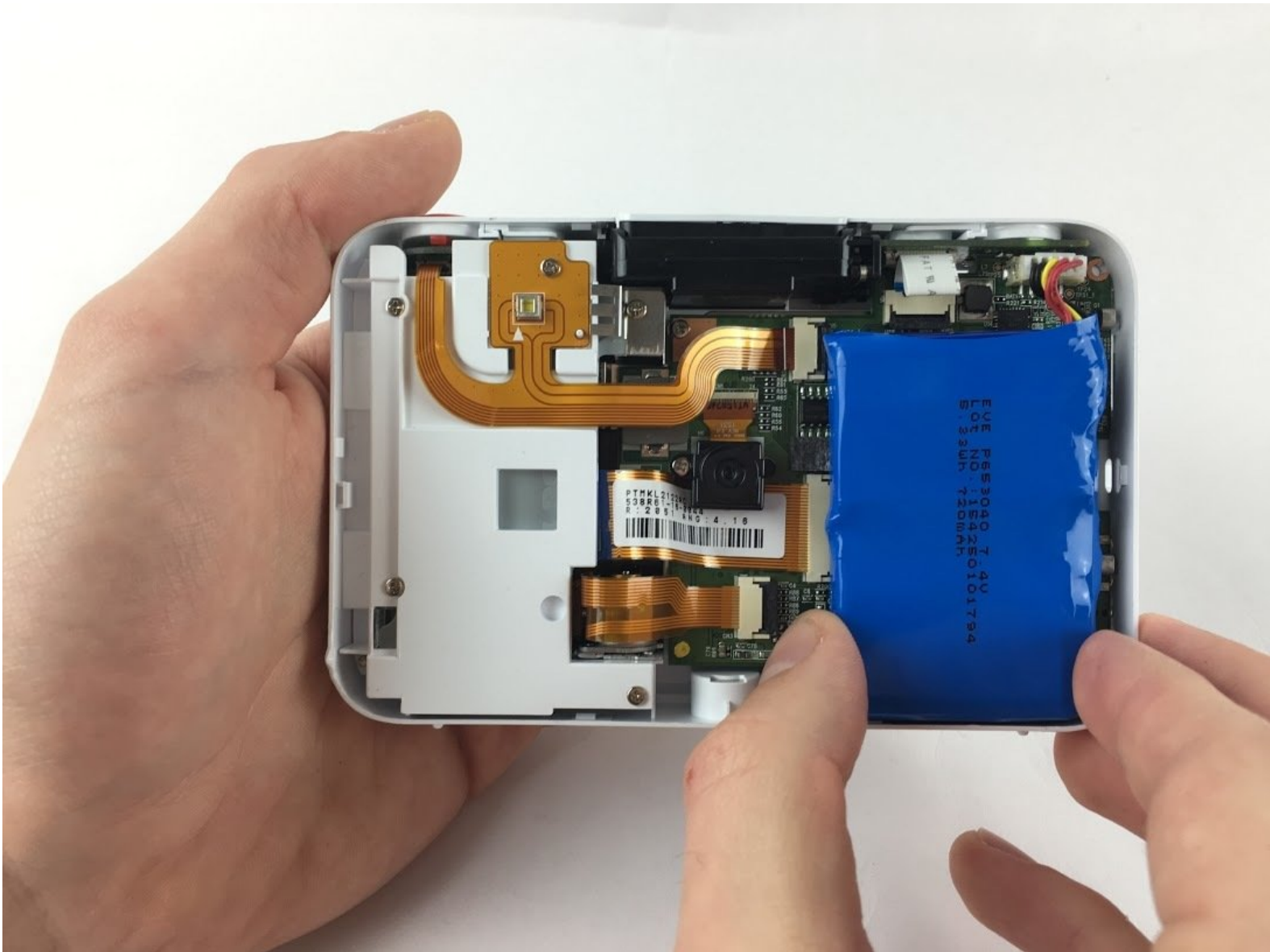




# Polaroid SNAP Battery Replacement

This guide will explain how to replace the battery.

Written By: Ian Colantuoni



## INTRODUCTION

When replacing the battery, realize that there is an adhesive which binds the battery to the camera. Given the adhesive, force might be required to remove the battery. However, you should be able to remove it with your hands.



### TOOLS:

- [JIS Driver Set](#) (1)
- [iFixit Opening Tool](#) (1)



### PARTS:

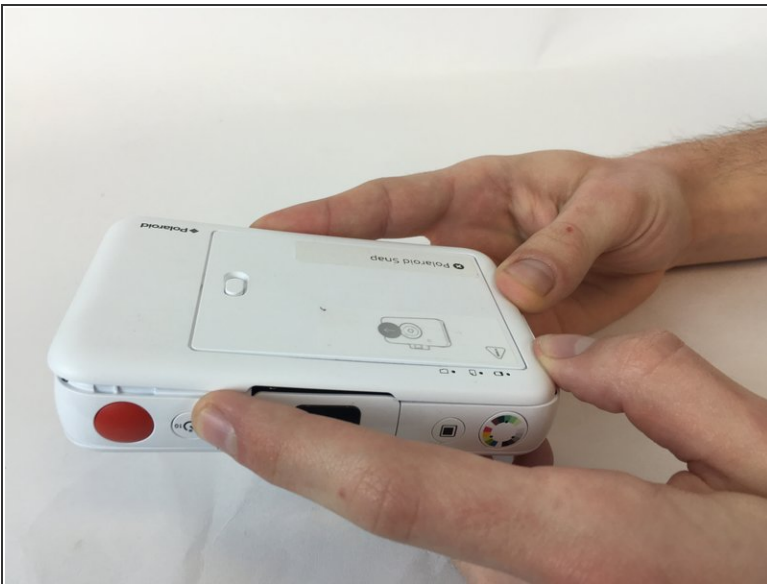
- [Lithium ion battery](#) (1)

## Step 1 — Polaroid SNAP Front and Back Face Plate Removal



- Open the paper door of the camera, then locate and remove the screws that are on the top and bottom edge of the inside of the camera.
- Screw head: Phillips, Screw length: 3mm

## Step 2



- Push the rear face plate from the short side nearest the screws you just removed towards the other short side of the camera. It should slide forward and unlock the clips holding it in place.
- Then it should be easy to simply lift the rear face plate up and remove it.

## Step 3



- Locate and remove the four screws on the corners of the camera, they're quite small and may be difficult to remove.
- Screw head: Philips, Screw length: 5mm

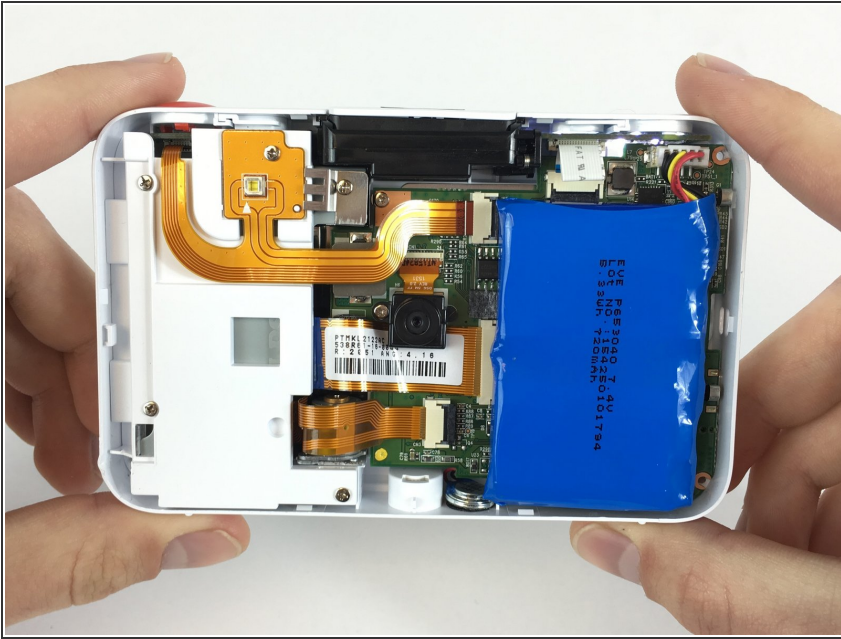
## Step 4



- Once the screws are removed, flip the camera over
- Use a plastic opening tool to disengage the six clips until the front face plate can be removed safely

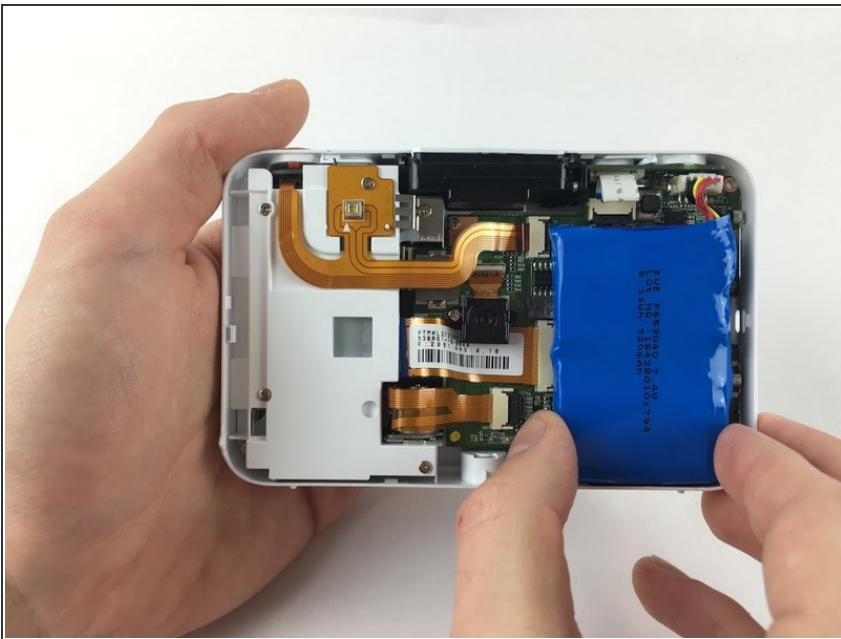


## Step 5



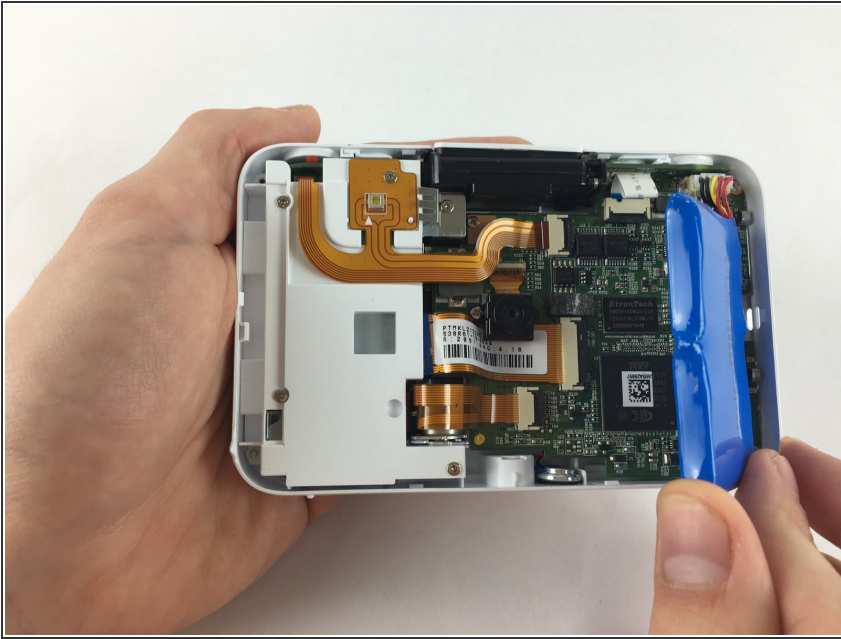
- The camera innards should now be accessible to you

## Step 6 — Battery



- Two foam strips and adhesive glue binds the battery to the camera.

## Step 7



- Remove the battery by lifting up the battery from the left corner. If you can not remove the battery with your hands, consider using a Plastic Opening Tool

## Step 8



- Using your fingers, remove the five pin connector from the device.

To reassemble your device, follow these instructions in reverse order.