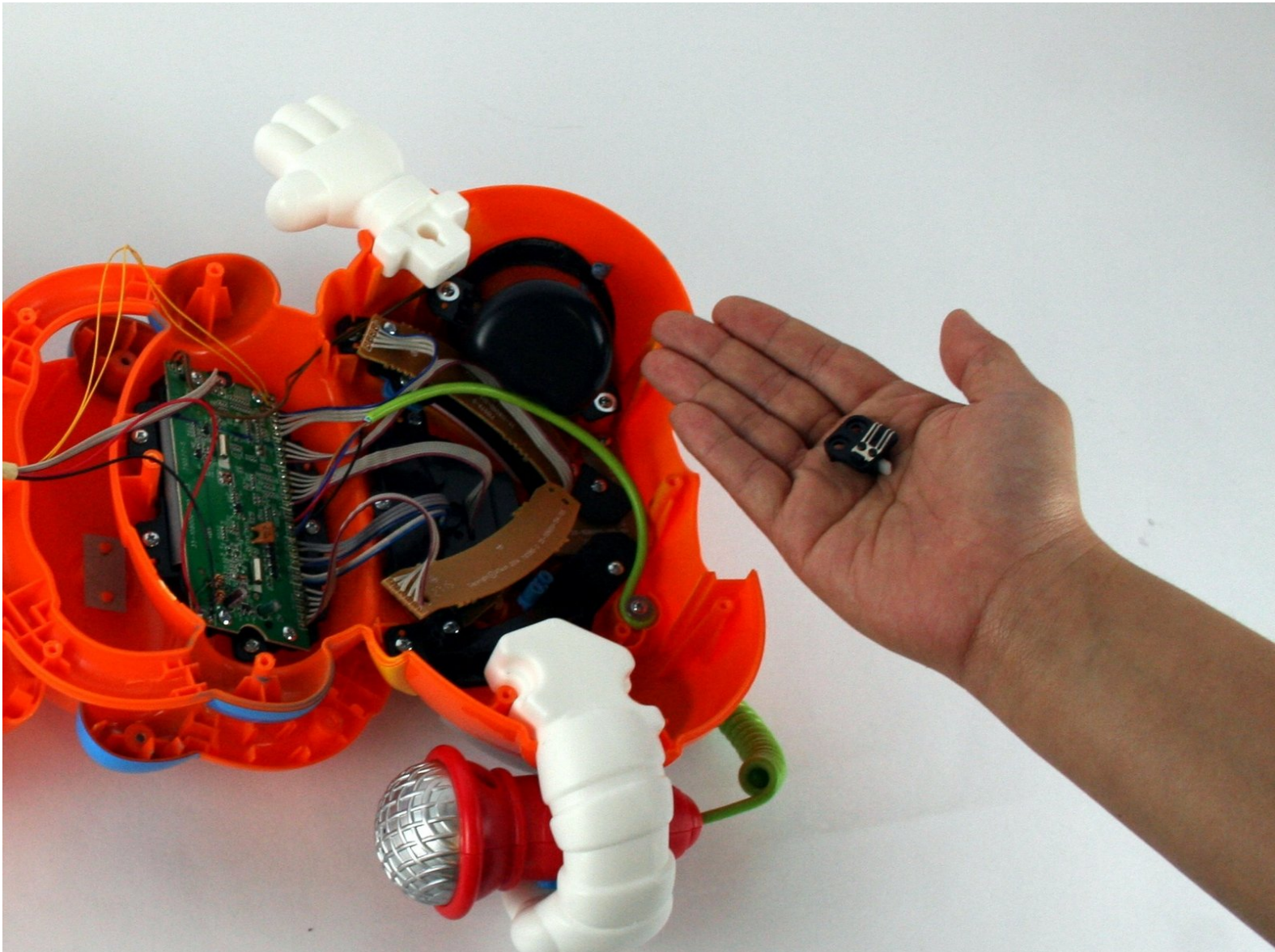




VTech Learning Tunes Karaoke Mode Selector Replacement

Replace the mode switch assembly.

Written By: Adam Chaberek



INTRODUCTION

Can't switch modes between songs? This guide will show you how to replace a faulty mode selector.



TOOLS:

- [Phillips #1 Screwdriver](#) (1)
 - [Phillips #2 Screwdriver](#) (1)
 - [Flathead Screwdriver](#) (1)
-

Step 1 — Mode Selector



- To remove the battery door, loosen the 4mm Flathead screw.

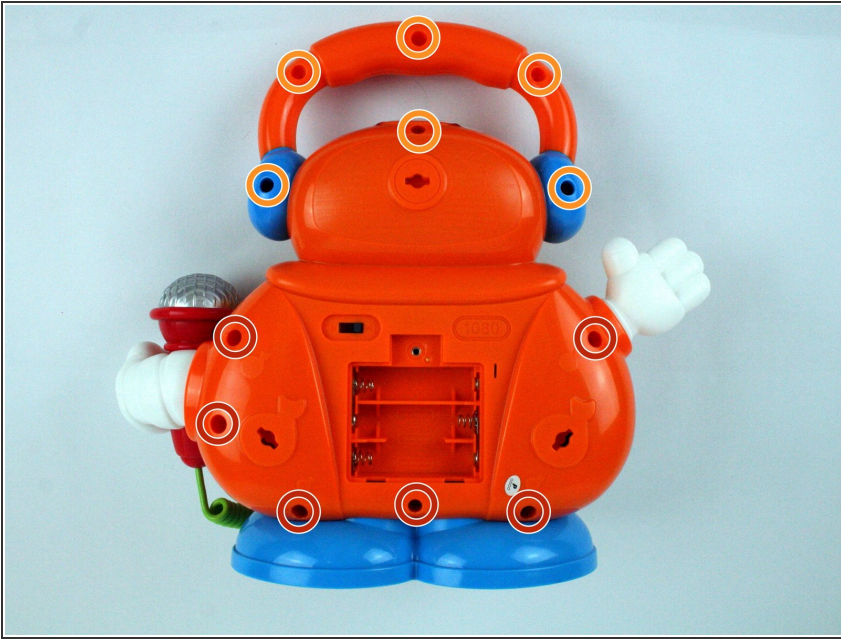
ⓘ A coin can also be used to loosen the screw.

Step 2



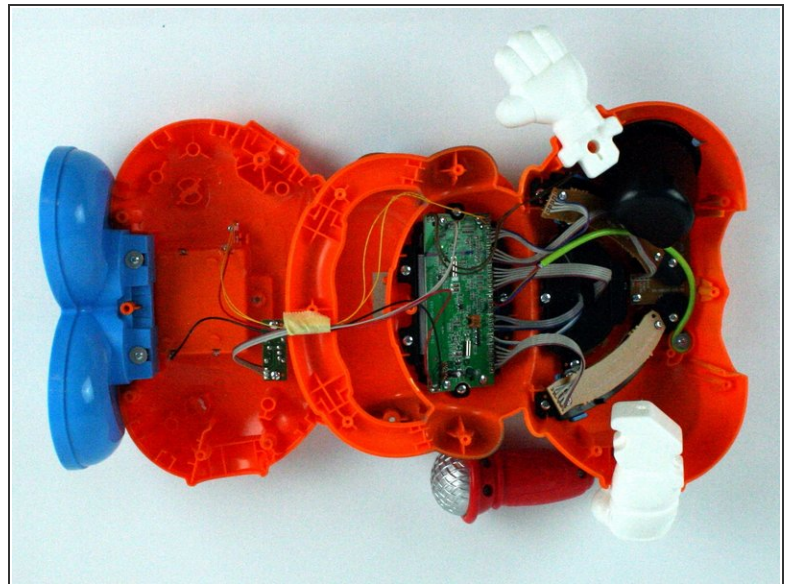
- Remove the battery door and take out the batteries.

Step 3



- Remove the six 9.5 mm Phillips #2 screws.
- Remove the six 6.0 mm Phillips #2 screws.

Step 4



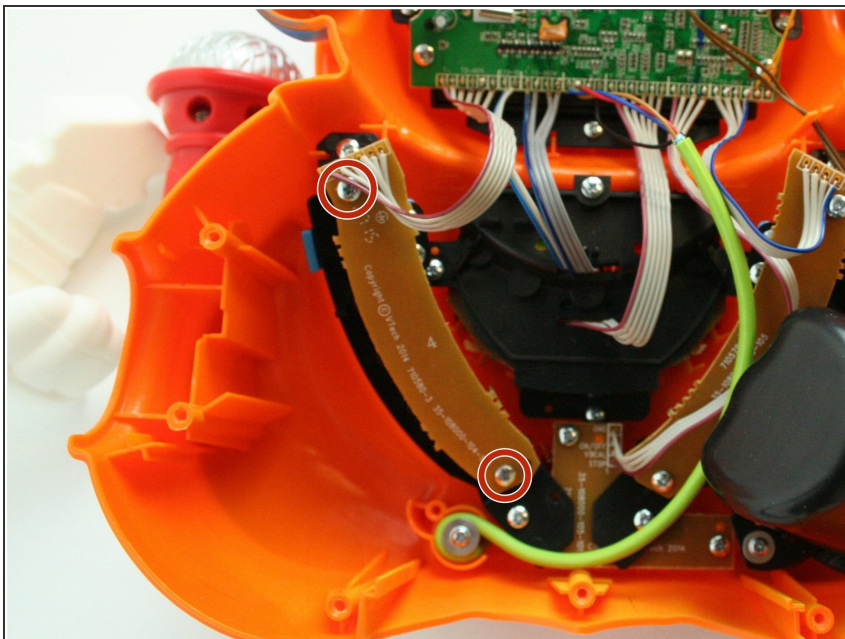
- Gently pull up on the rear panel.

⚠ Be careful to not pull on the wire connections.

- Gently place the back panel underneath the top panel with the tops facing each other, as shown in the picture.

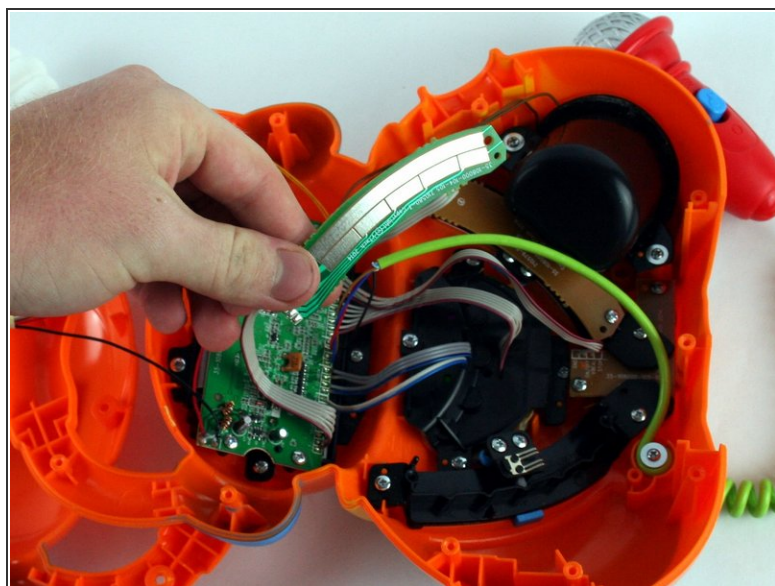
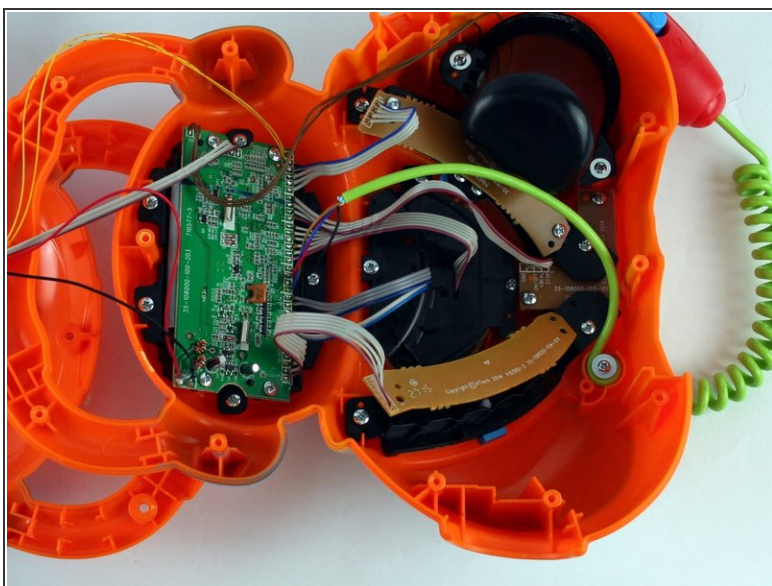
This document was generated on 2020-11-17 12:18:51 PM (MST).

Step 5



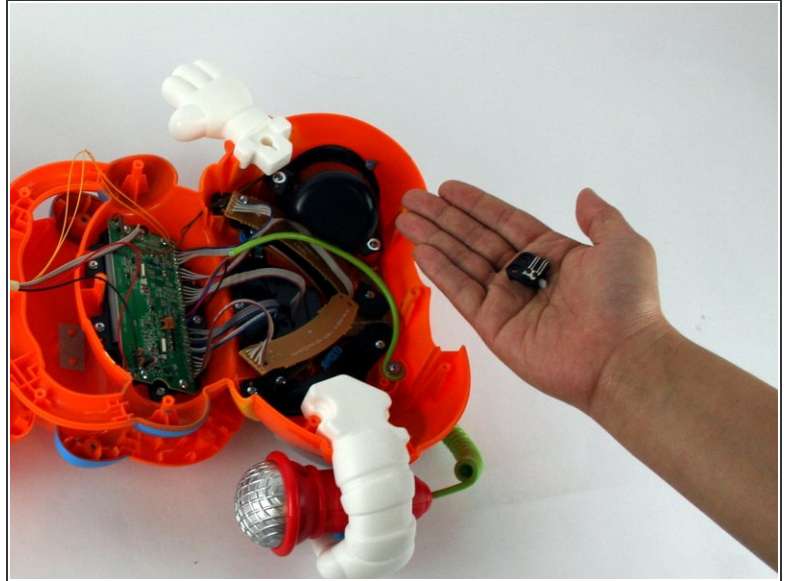
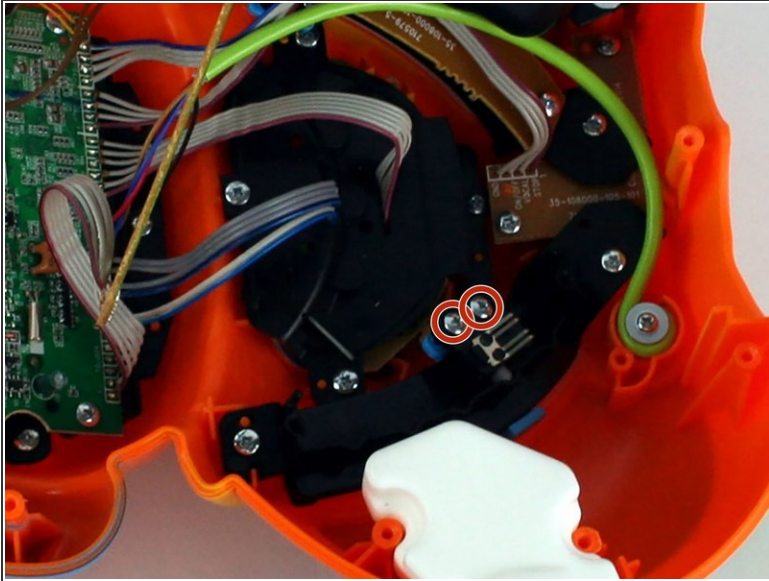
- Remove the two 7.9 mm Phillips #1 mode switch board screws.

Step 6



- Once the screws have been removed, carefully move the mode switch board to expose the mode switch assembly underneath.

Step 7



- Using a Philips #1 screwdriver, remove the two 5.6 mm screws on the switch.
- Once the screws have been removed, you can easily remove the mode switch.

To reassemble your device, follow these instructions in reverse order.