



Sony Handycam HDR-CX380 Lens Replacement

This guide will show you to remove the lens.

Written By: Zackary Williams



INTRODUCTION

Removing and replacing the lens is a very simple and easy task.




TOOLS:

- [iFixit Opening Tools](#) (1)
 - [Screwdriver J00 Phillips Head](#) (1)
-

Step 1 — Battery




- Rotate your camera such that the underside is facing you and the lens is facing the ground.

 You should be able to see the camera's label, and it should be rotated 90 degrees counterclockwise.

Step 2



- Using your left thumb, push down the slider to the left of the SD card slot.
-  When inserting a new battery or reinserting the one you removed, you can ignore this step.

Step 3



- Using your right index finger and thumb, pull the battery toward you and then away from the camera.

Step 4 — Camera Shell



- Orient the camera with the battery side facing up.

Step 5



- Remove the single 4.5 mm Phillips #00 screw.
- Remove the single 5.5 mm Phillips #00 screw.

Step 6



- With the blue plastic opening tools, gently pry the plastic casing surrounding the start/stop button free.
- Remove the casing using your right thumb and index finger.

Step 7



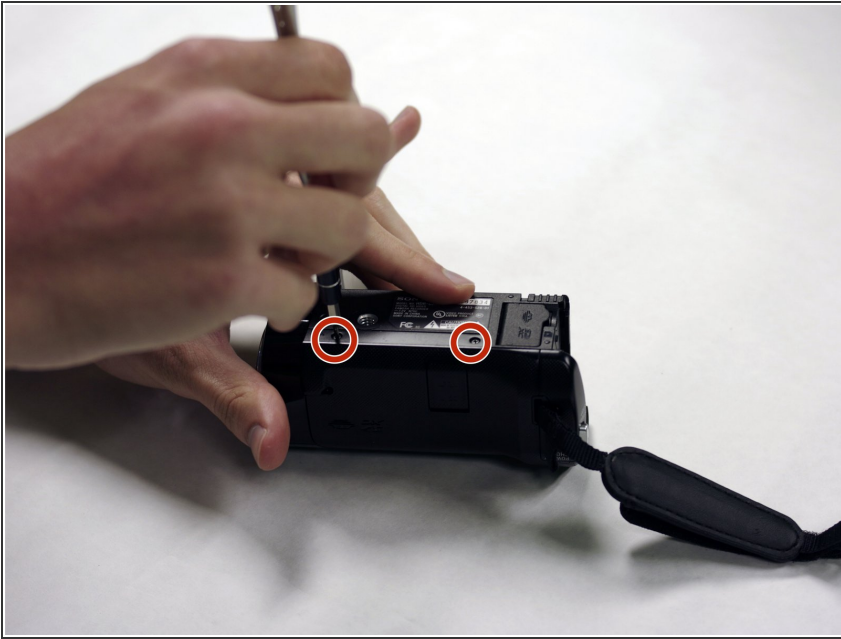
- Flip open the LCD panel to get to the side panel.
- Remove the three 5.5 mm Phillips #00 screws.

Step 8



- Turn the camera around to the grip side and remove the 5.5 mm Phillips Head screw using your J00 Phillips Head screwdriver.

Step 9



- With the bottom of the camera facing up, remove the two 5.5mm Phillips #00 screws.

Step 10



- Orient the camera so the bottom is facing you.
- Use the blue plastic opening tools to gently ease the camera shell off of the camera.
- Rotate the camera so the LCD side panel is facing you and gently pry the shell off from the camera.

Step 11 — Lens Cover Panel



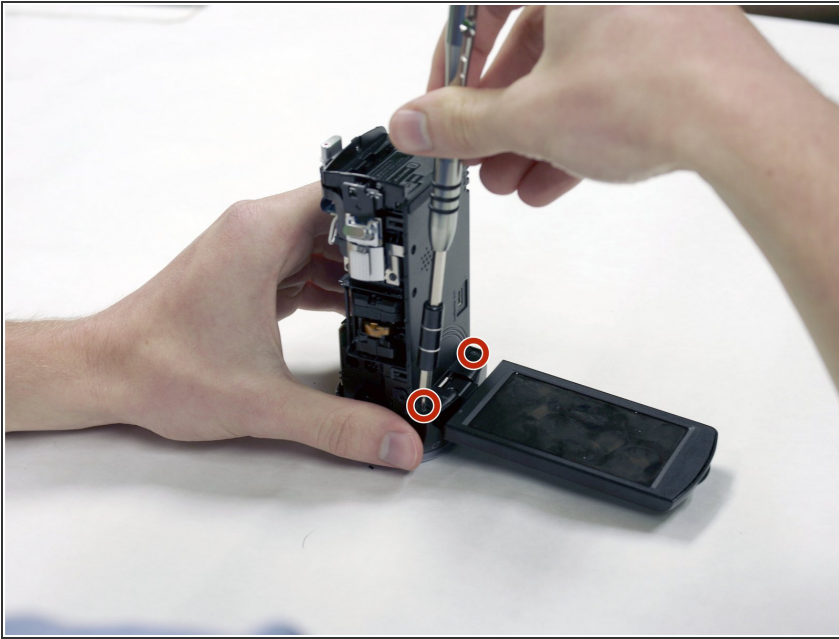
- Orient the camera such that the lens is facing to your left.
 - Using your right hand to hold the camera, gently remove the lens panel from the camera with your left hand.
- ⓘ The camera should be oriented with the lens pointing to your left.

Step 12 — Shutter Assembly



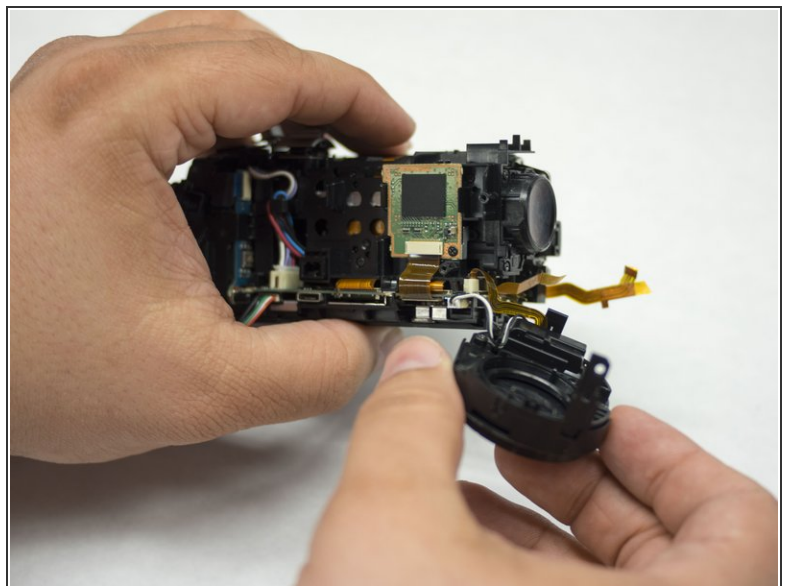
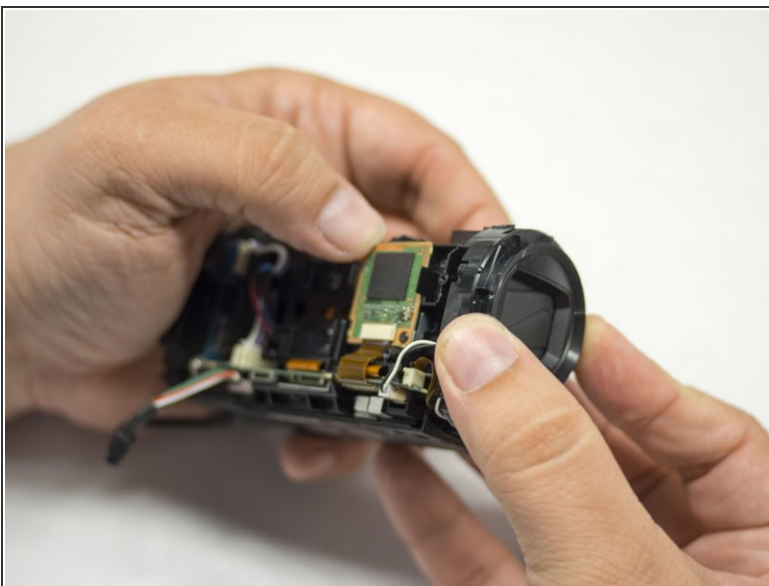
- Rotate the camera so that it is upright and the lens is pointed to your left.
- Using your right hand to hold the screwdriver and your left to hold the camera, remove the single 5.5 mm Phillips #00 screw from on the top of the shutter assembly.

Step 13



- Rotate the camera such that the lens is pointed downward and the LCD screen points to your right.
- Remove the two Phillips #00 screws from the LCD screen's hinge.

Step 14

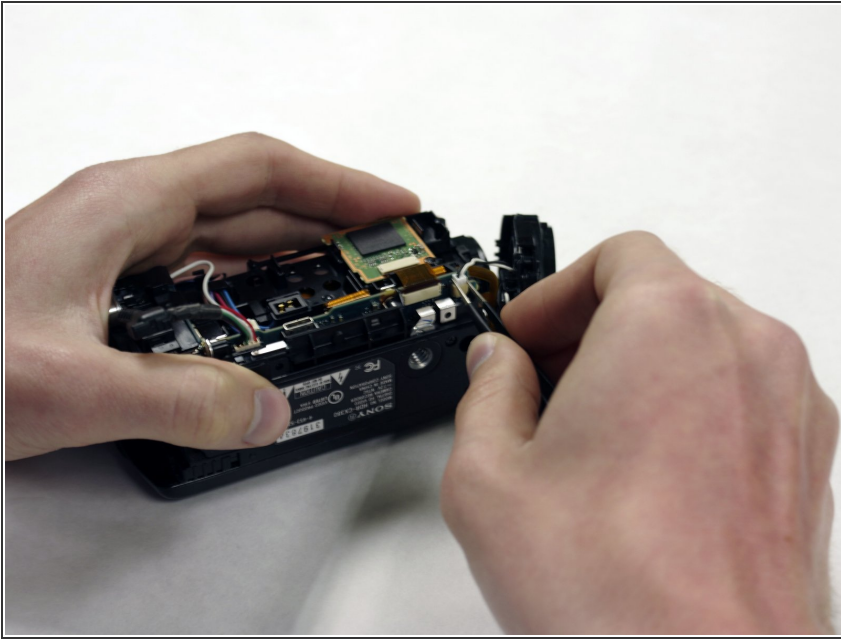


- Orient the camera such that it is upright and the lens is facing to your right.
- Using your left hand to hold the camera, gently remove the shutter assembly from the hull with your right hand.

i If you are only trying to remove the lens, you do not need to perform the next two steps.

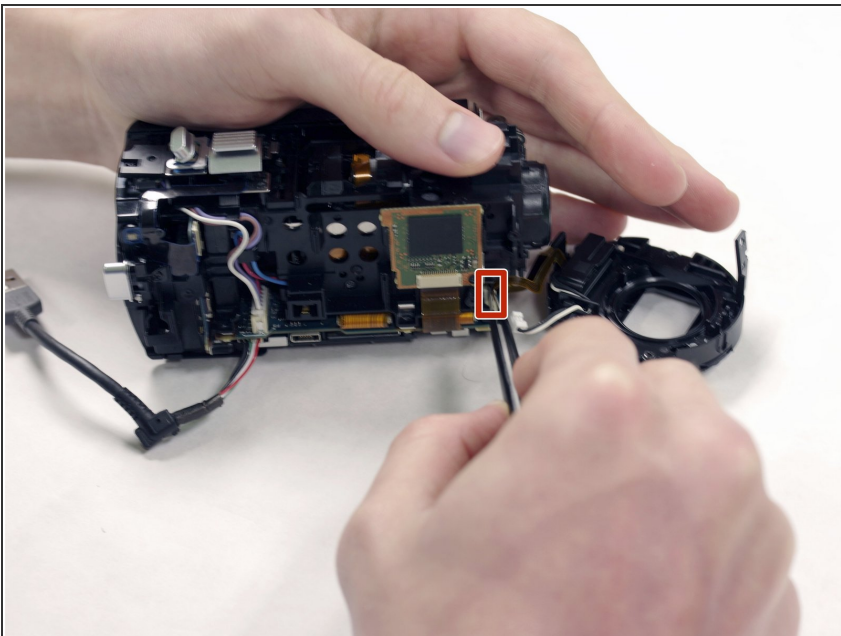
This document was generated on 2020-11-28 05:01:42 AM (MST).

Step 15



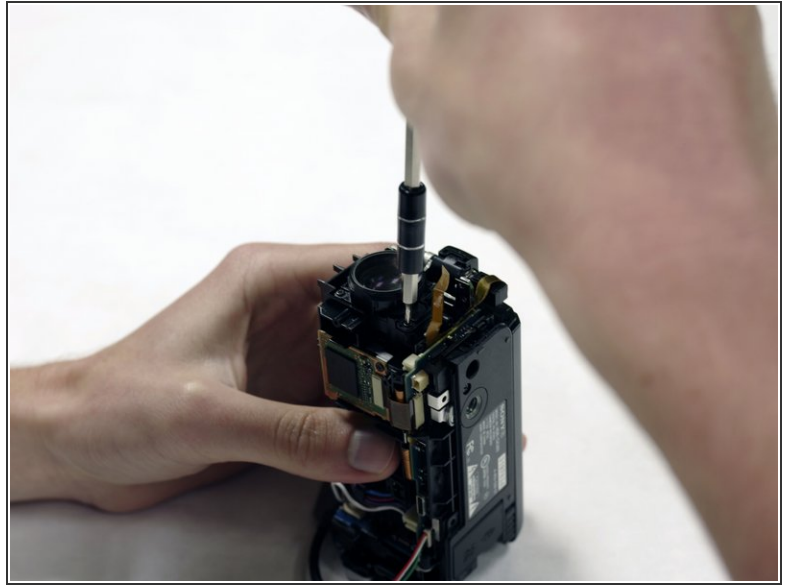
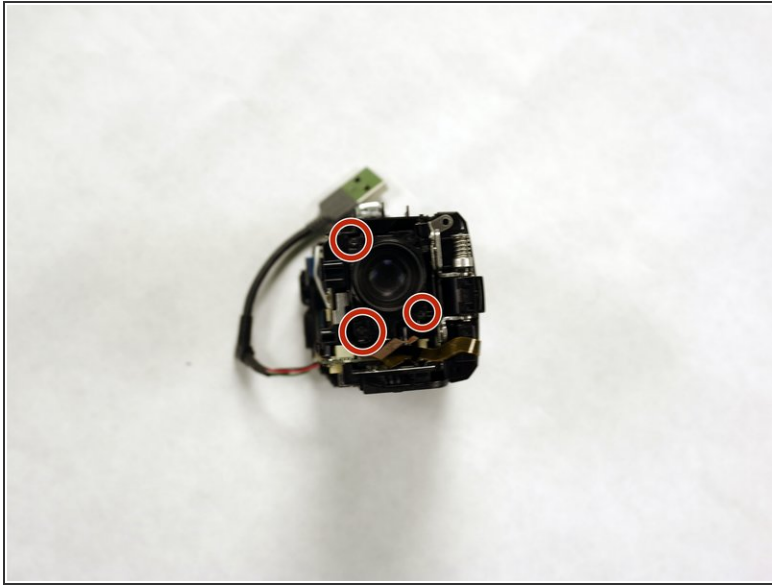
- Orient the camera such that the bottom is facing toward you and the lens is facing to your right.
- Using your metal tweezers, gently remove the wire harness connecting the shutter assembly to the motherboard.

Step 16



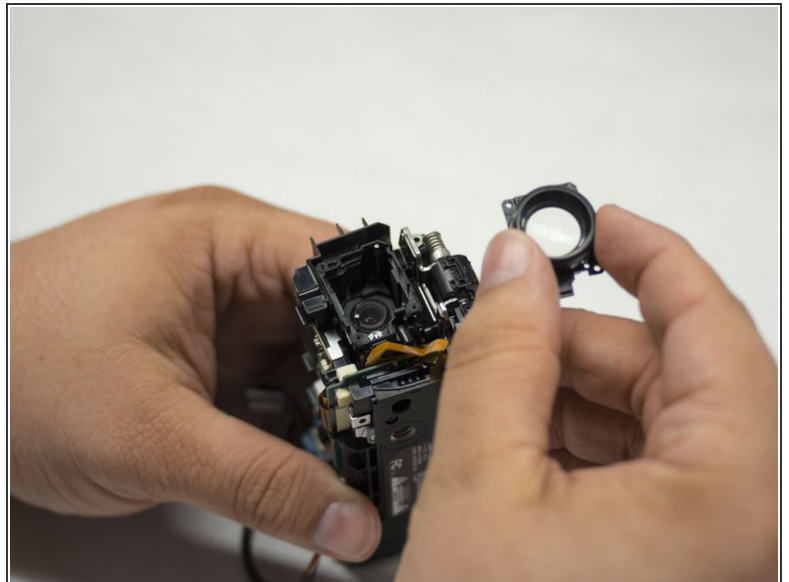
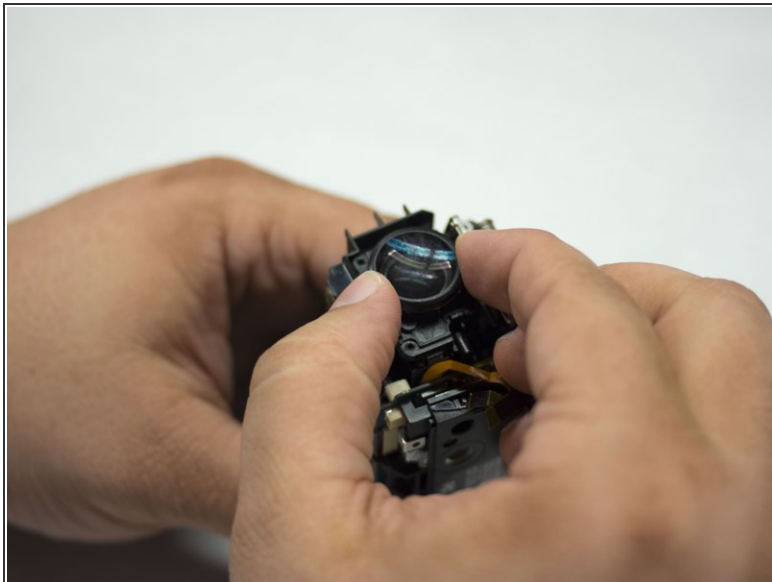
- Rotate the camera so that it is upright and the lens is facing to your right.
 - Remove the ribbon cable connecting the shutter assembly to the motherboard using your metal tweezers.
- ⚠ Be sure to pull the ribbon cable gently, as ribbon cables are easy to damage and can require soldering to repair.

Step 17 — Lens



- Remove the three 5.5mm Phillips #00 screws holding the lens in.

Step 18



- Gently pull the lens up from the camera.

To reassemble your device, follow these instructions in reverse order.