



Sony Handycam HDR-CX380 Shutter Assembly Replacement

In this guide, you will learn how to remove the...

Written By: John Santoro



INTRODUCTION

In this guide, you will learn how to remove the shutter assembly from the Sony Handycam HDR-CX380. Completely removing the shutter assembly must be done with caution, as it is connected to the motherboard with sensitive electrical ribbon.

TOOLS:

[iFixit Opening Tool](#) (1)

[Phillips #00 Screwdriver](#) (1)

Step 1 — Battery



- Rotate your camera such that the underside is facing you and the lens is facing the ground.
- ⓘ You should be able to see the camera's label, and it should be rotated 90 degrees counterclockwise.

Step 2



- Using your left thumb, push down the slider to the left of the SD card slot.
- ☑ When inserting a new battery or reinserting the one you removed, you can ignore this step.

Step 3



- Using your right index finger and thumb, pull the battery toward you and then away from the camera.

Step 4 — Camera Shell



- Orient the camera with the battery side facing up.

Step 5



- Remove the single 4.5 mm Phillips #00 screw.
- Remove the single 5.5 mm Phillips #00 screw.

Step 6



- With the blue plastic opening tools, gently pry the plastic casing surrounding the start/stop button free.
- Remove the casing using your right thumb and index finger.

Step 7



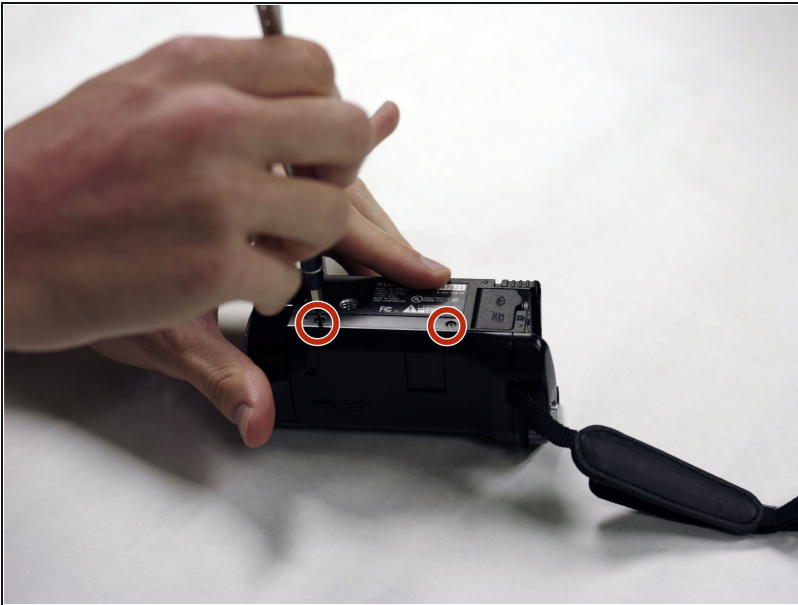
- Flip open the LCD panel to get to the side panel.
- Remove the three 5.5 mm Phillips #00 screws.

Step 8



- Turn the camera around to the grip side and remove the 5.5 mm Phillips Head screw using your J00 Phillips Head screwdriver.

Step 9



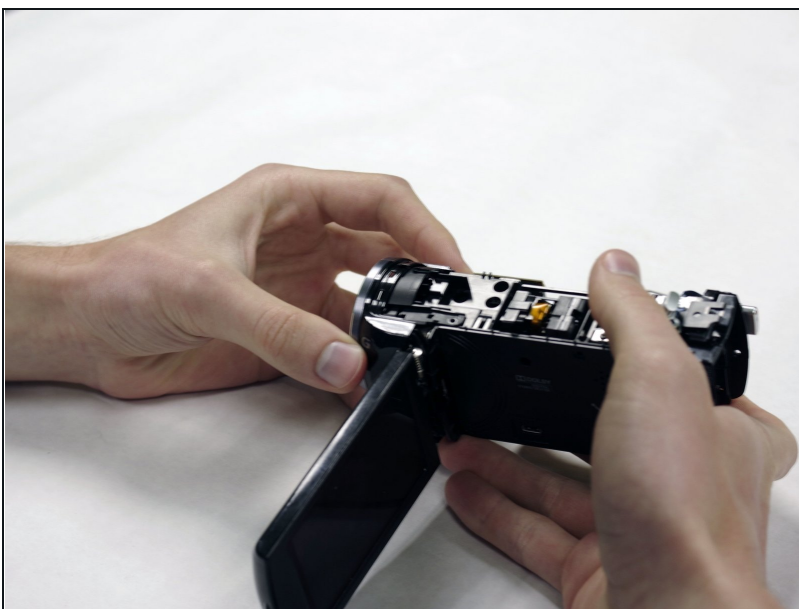
- With the bottom of the camera facing up, remove the two 5.5mm Phillips #00 screws.

Step 10



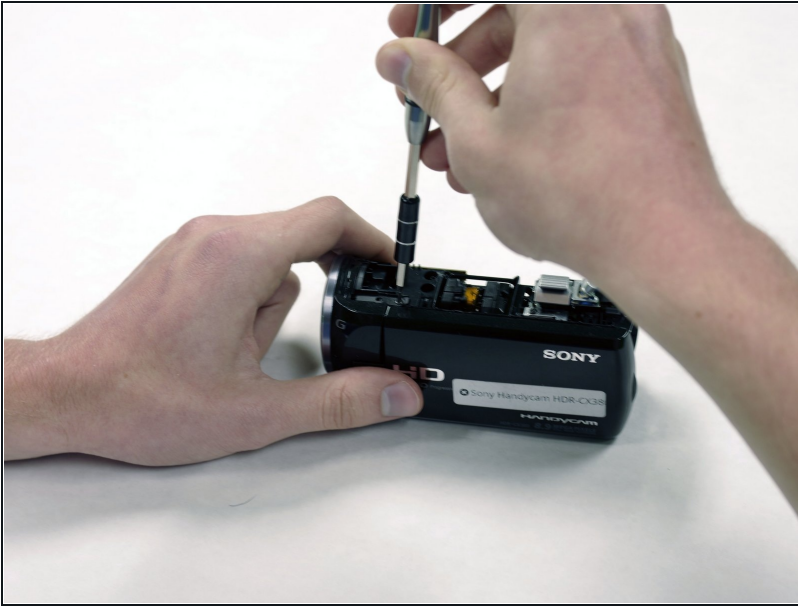
- Orient the camera so the bottom is facing you.
- Use the blue plastic opening tools to gently ease the camera shell off of the camera.
- Rotate the camera so the LCD side panel is facing you and gently pry the shell off from the camera.

Step 11 — Lens Cover Panel



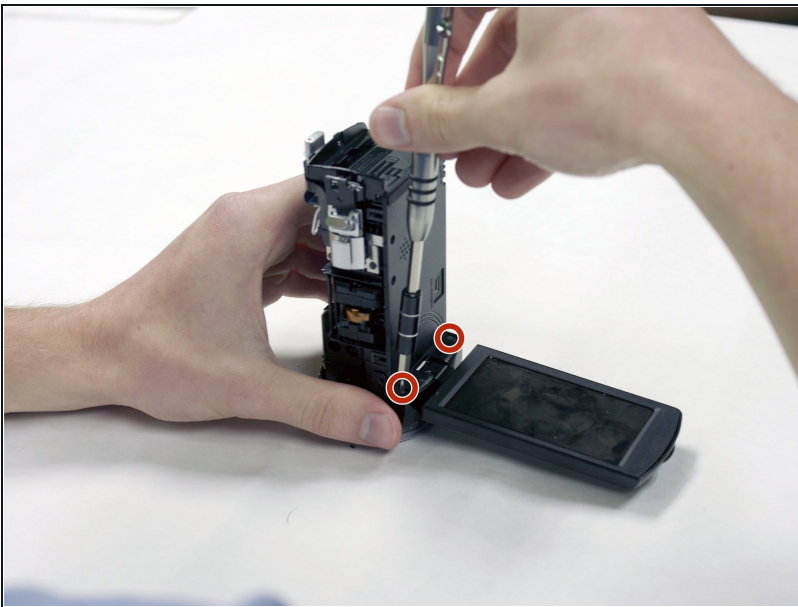
- Orient the camera such that the lens is facing to your left.
 - Using your right hand to hold the camera, gently remove the lens panel from the camera with your left hand.
- ① The camera should be oriented with the lens pointing to your left.

Step 12 — Shutter Assembly



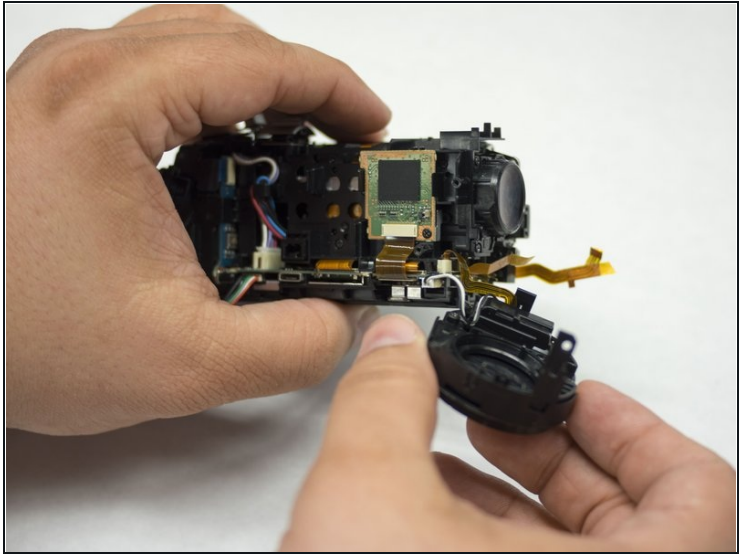
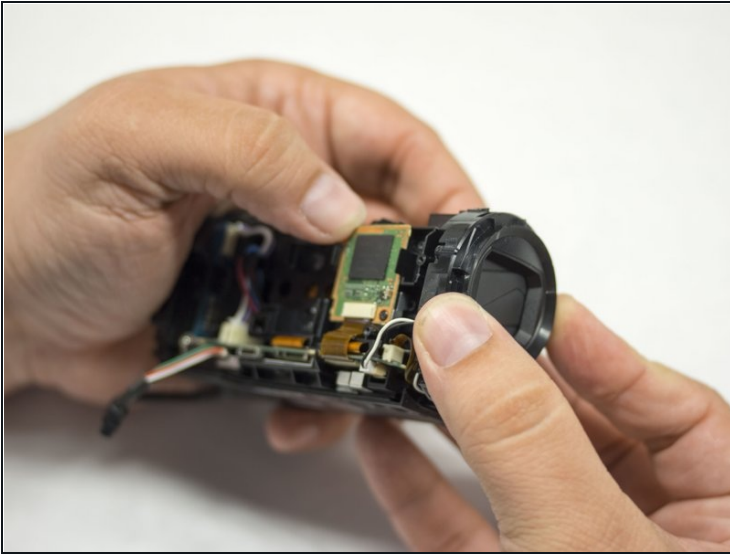
- Rotate the camera so that it is upright and the lens is pointed to your left.
- Using your right hand to hold the screwdriver and your left to hold the camera, remove the single 5.5 mm Phillips #00 screw from on the top of the shutter assembly.

Step 13



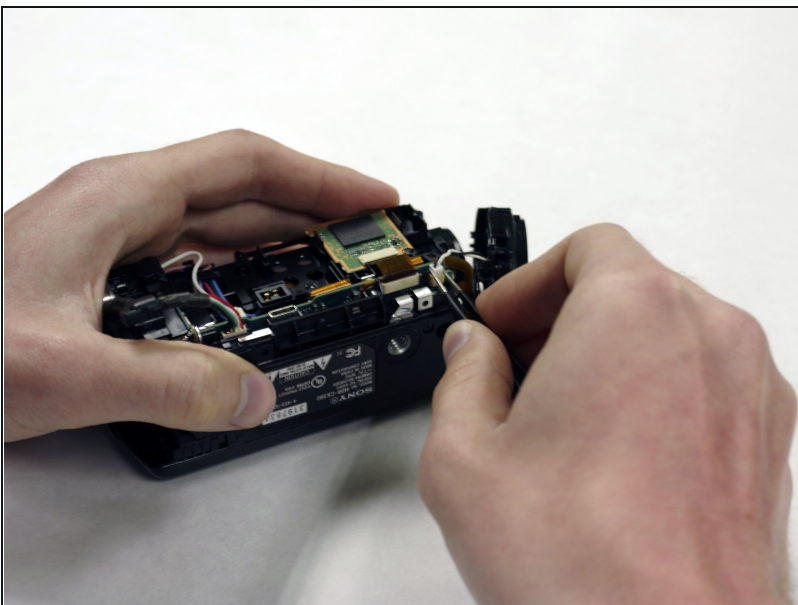
- Rotate the camera such that the lens is pointed downward and the LCD screen points to your right.
- Remove the two Phillips #00 screws from the LCD screen's hinge.

Step 14



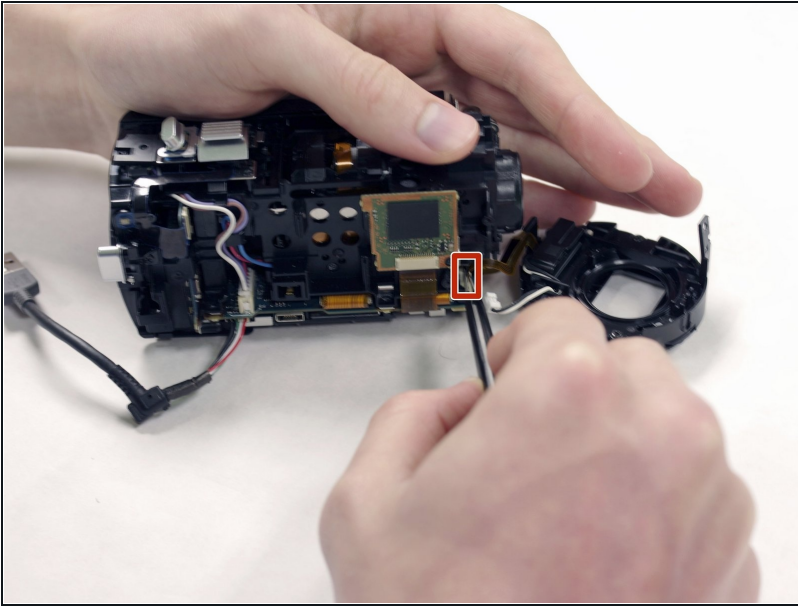
- Orient the camera such that it is upright and the lens is facing to your right.
- Using your left hand to hold the camera, gently remove the shutter assembly from the hull with your right hand.
- ① If you are only trying to remove the lens, you do not need to perform the next two steps.

Step 15



- Orient the camera such that the bottom is facing toward you and the lens is facing to your right.
- Using your metal [tweezers](#), gently remove the wire harness connecting the shutter assembly to the motherboard.

Step 16



- Rotate the camera so that it is upright and the lens is facing to your right.
 - Remove the ribbon cable connecting the shutter assembly to the motherboard using your metal tweezers.
- ⚠ Be sure to pull the ribbon cable gently, as ribbon cables are easy to damage and can require soldering to repair.

To reassemble your device, follow these instructions in reverse order.