



Dremel 7300 MiniMite Cordless Collet Replacement

This guide shows how to replace the collet nut assembly on the Dremel. It doesn't require any prerequisite steps or tools.

Written By: Kat



INTRODUCTION

If you need to replace the collet nut or collet itself, this is the guide for you.




TOOLS:

- [Collet Wrench](#) (1)

It comes with the device.

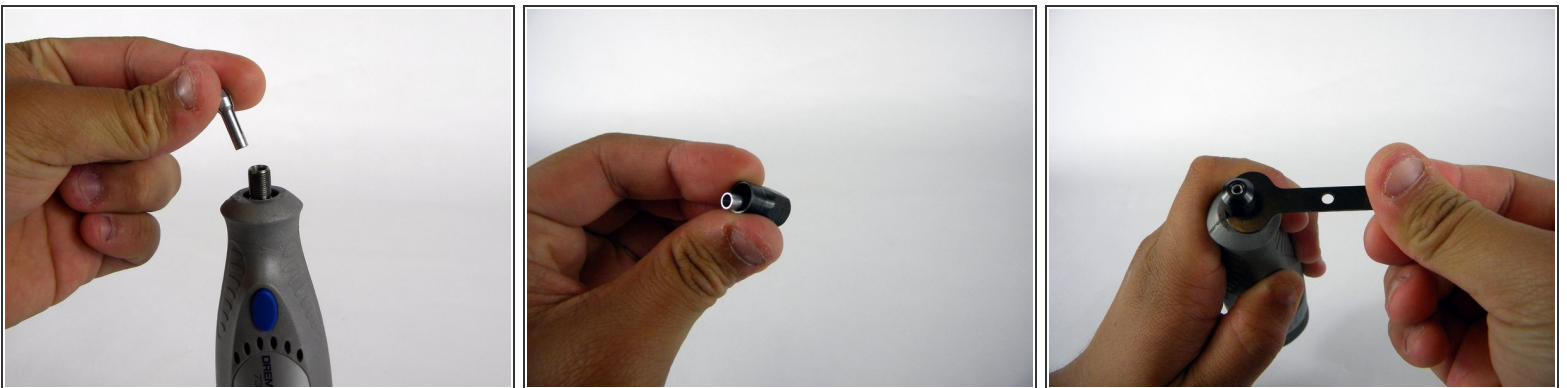
Step 1 — Collet



 The device comes with a small black wrench to tighten the collet nut, during reassembly or changing the bits.

- Press the blue button and hold it down.
- Unscrew the collet nut, with your fingers (as if you were going to change the bit).
- Continue until the collet nut comes completely off of the Dremel.

Step 2



- Once the collet nut is off, you can remove the collet. It is the silver part that grips the bit when the collet nut tightens on it.
- The collet itself may be in the shaft, or come off with the nut.

To reassemble your device, follow these instructions in reverse order.

