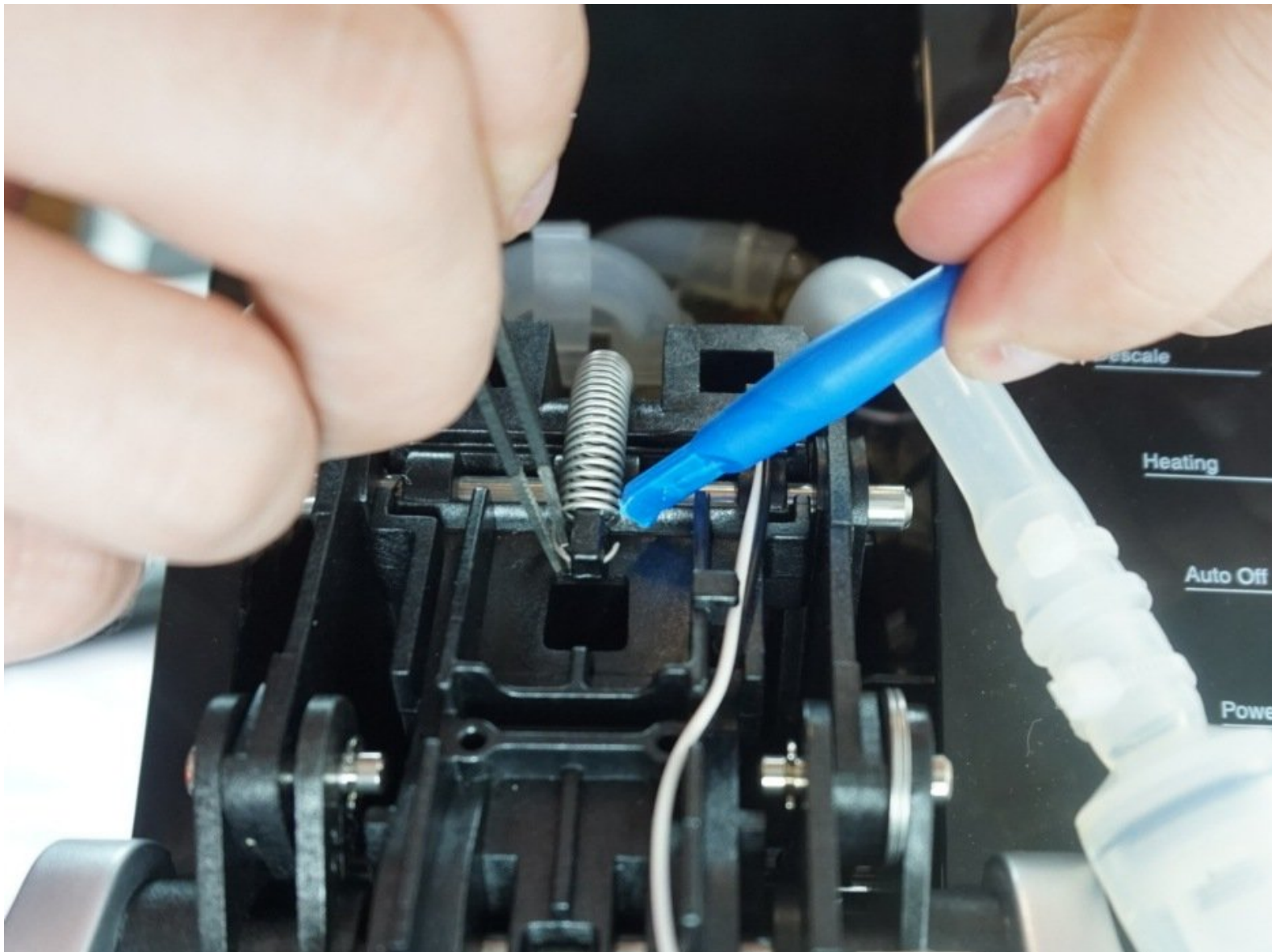




# Keurig K40 Spring Replacement

This guide will help you replace the spring that allows the lid to open and close.

Written By: Michelle Sanchez



## INTRODUCTION

To get to the spring the K-cup assembly housing, the lid, and the water pump will need to be removed.



### TOOLS:

- [Tweezers](#) (1)
  - [Phillips #0 Screwdriver](#) (1)
  - [Phillips #2 Screwdriver](#) (1)
  - [iFixit Opening Tools](#) (1)
-

## Step 1 — Spring



- Using a Phillips #2 screwdriver unscrew two 2mm screws.
- Once the screws are out, lift up and squeeze the k-cup assembly housing to take it out.

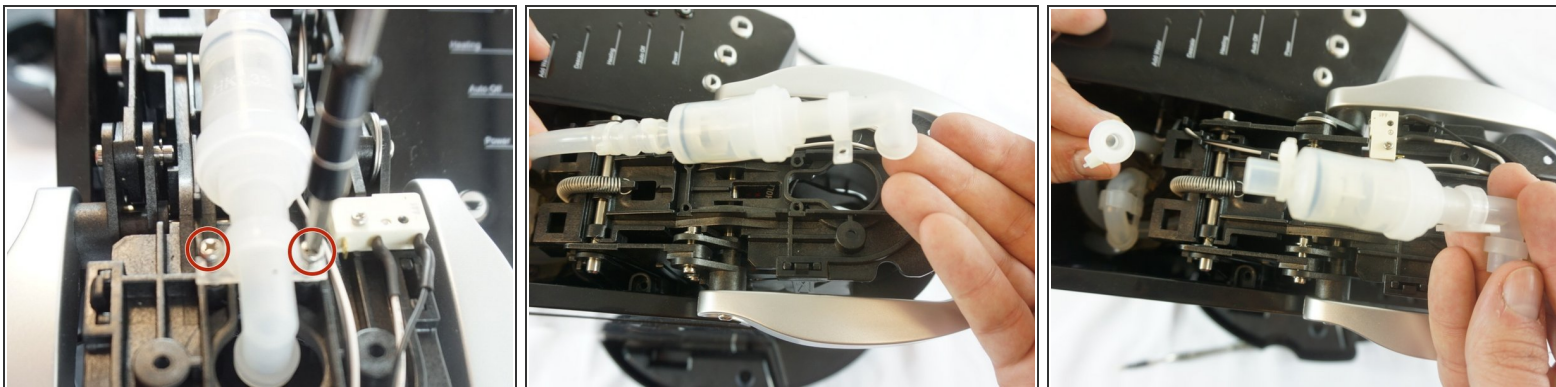
## Step 2



- Use the handle to open the lid then squeeze and move the lid around to take it off.

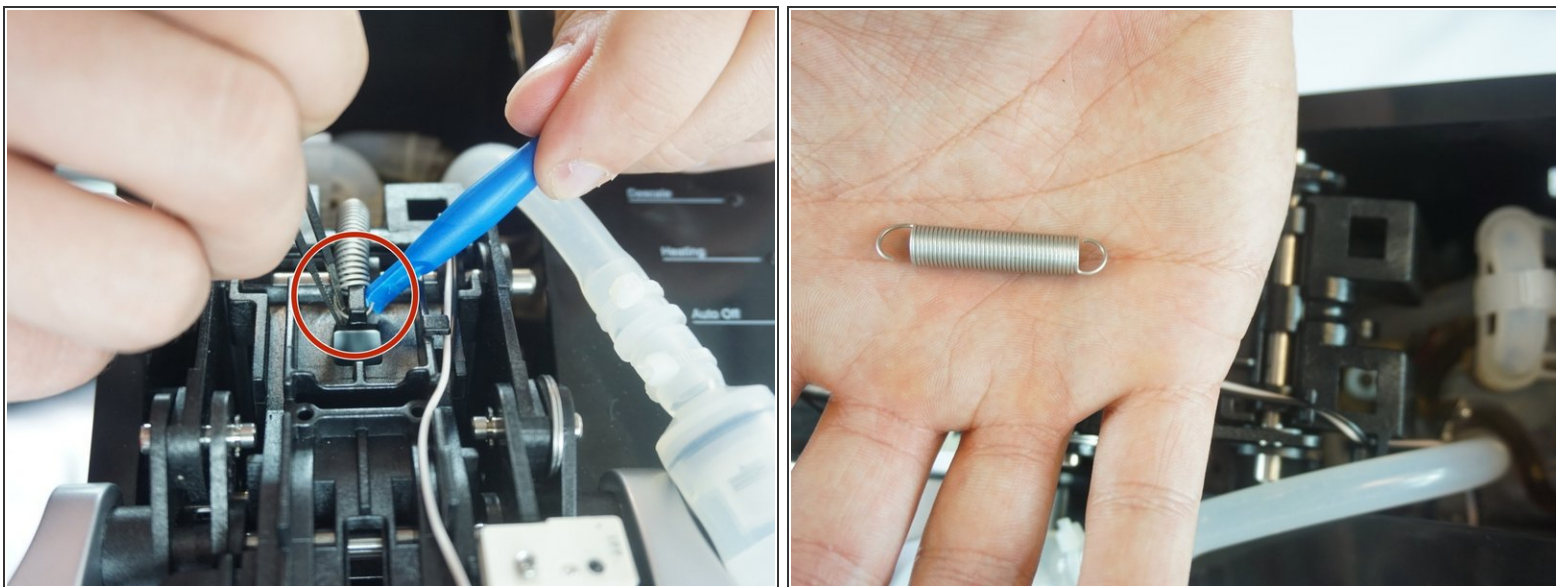


### Step 3



- Using the Phillips #0 screwdriver unscrew two 2mm screws on the water pump.
- Once unscrewed lift the water pump up and pull and twist it off.

### Step 4



- Using the tweezer and the plastic opening tool grab the front of the spring to take it off.

To reassemble your device, follow these instructions in reverse order.