



Nexus 4 Wireless Charger Teardown

Teardown of a Google Nexus Qi charger (LG WCP-400).

Written By: David Spalding



INTRODUCTION

Wig Ban's teardown of a Google Nexus charger 2012 (LG WCP-400). Originally provided as an *answer*.



TOOLS:

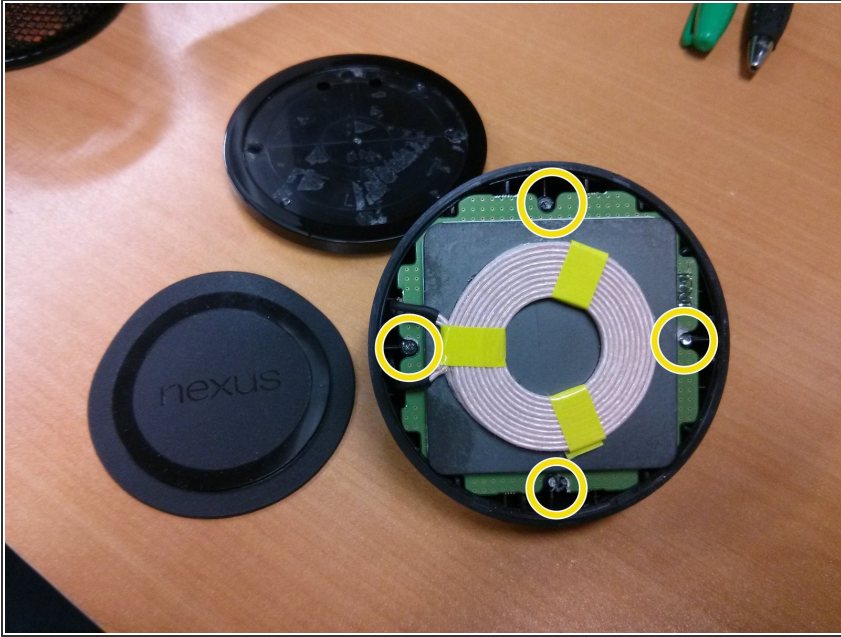
- [Phillips #2 Screwdriver](#) (1)
 - [Heavy-Duty Spudger](#) (1)
 - [Metal Spudger](#) (1)
-

Step 1 — Remove the round rubber face from the charging orb



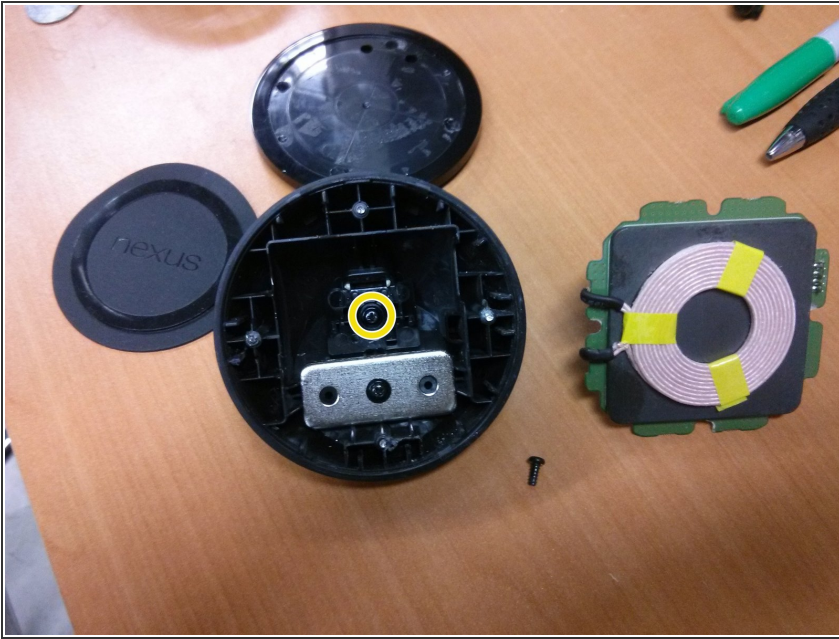
- Remove the round rubber face from the charging orb
- Behind the rubber face is a thin sheet of plastic, you'll need to pierce it to access the 4 screws holding the device together.

Step 2



- The screws are located at 12 o'clock, 3 o'clock, 6 o'clock and 9 o'clock, just inside the outer ring.
- You will need to unscrew these if possible, on my unit they were glued in and I was unable to unscrew them. Instead I used a drill with a 1/8" bit to drill them out.
- If you drill them out be careful as they are surrounded by a PCB, though I drilled into the board a bit and it still functions. Once you remove the screws use the spudger to pry the shiny black plastic face off the base.
- You will see the seam where the shiny and matte plastic meet on the unit. There are 4 plastic clips holding it down, once they are unclipped you can remove the shiny black faceplate exposing the charging coil and main PCB.

Step 3



- Next gently pull up on the main PCB and swing it to the right. There are wires connecting the main board to the micro usb port beneath, so be gentle.
- You will see a single screw holding down the board with the micro usb connector, unscrew it and you're done.