



ASUS ZenWatch Charging Cradle Circuit board Replacement

The charging cradle has a single circuit board that can simply be replaced if it fails to charge.

Written By: Wayne McClure



INTRODUCTION

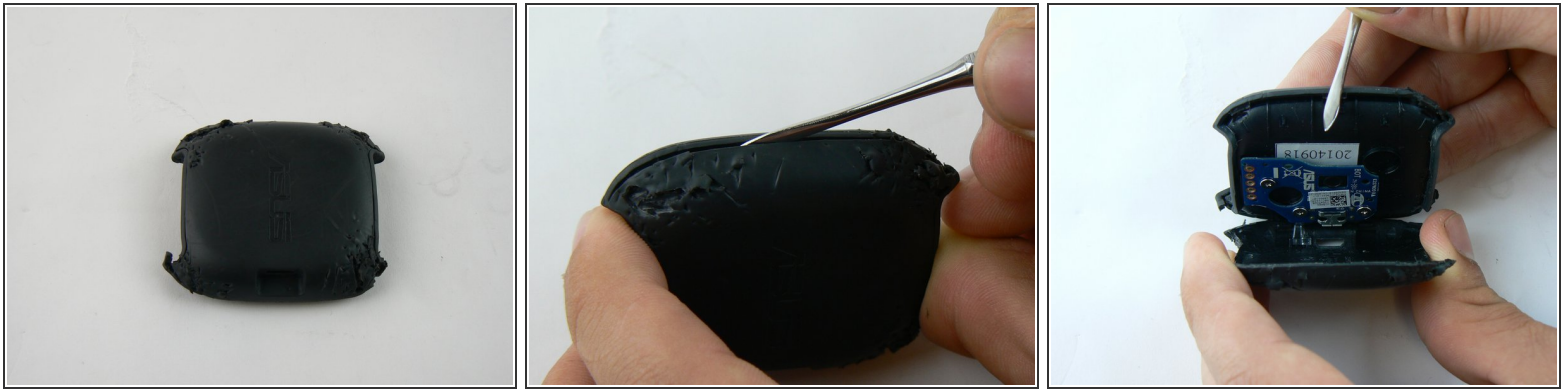
Replacing the circuit in the charging cradle



TOOLS:

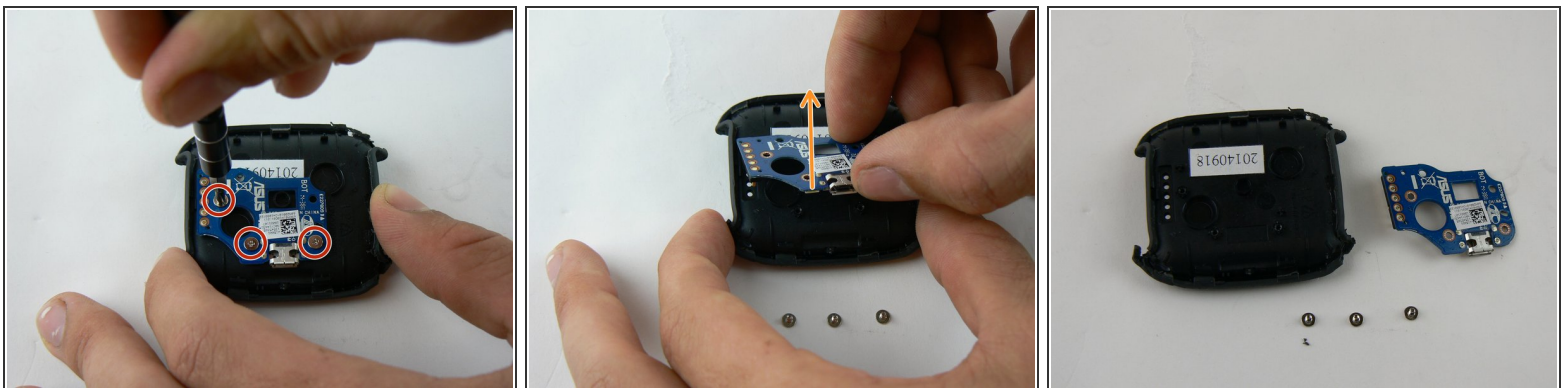
- [Metal Spudger](#) (1)
 - [Phillips #0 Screwdriver](#) (1)
-

Step 1 — Charging Cradle Circuit board



- Using a metal spudger gently pry the plastic outer case apart
- ⓘ Pry open a little bit on each side before trying to open fully

Step 2



- Use the PH0 sized Phillips screwdriver to remove the three screws (2mm) holding the board to the cradle.
- Gently pry up with your hands to pull the board off.
- ⚠ Don't grab directly on the USB port as you may loosen or bust the connections.

To reassemble your device, follow these instructions in reverse order.