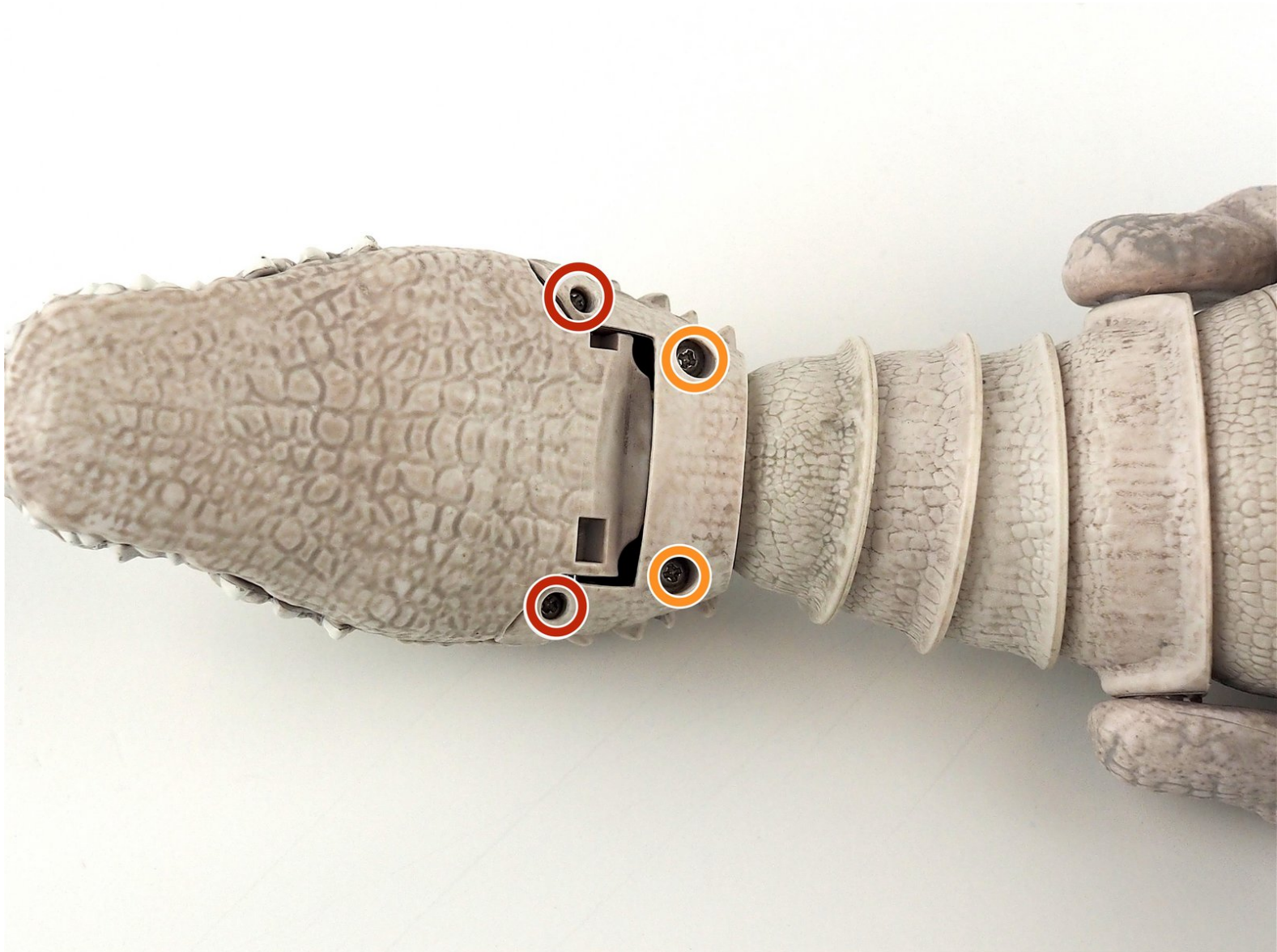




Zoomer Jurassic World Indominus Rex Mouth Part Replacement

This is a prerequisite guide to replace the jaw of the Zoomer Jurassic World Indominus Rex.

Written By: Anh Le



INTRODUCTION

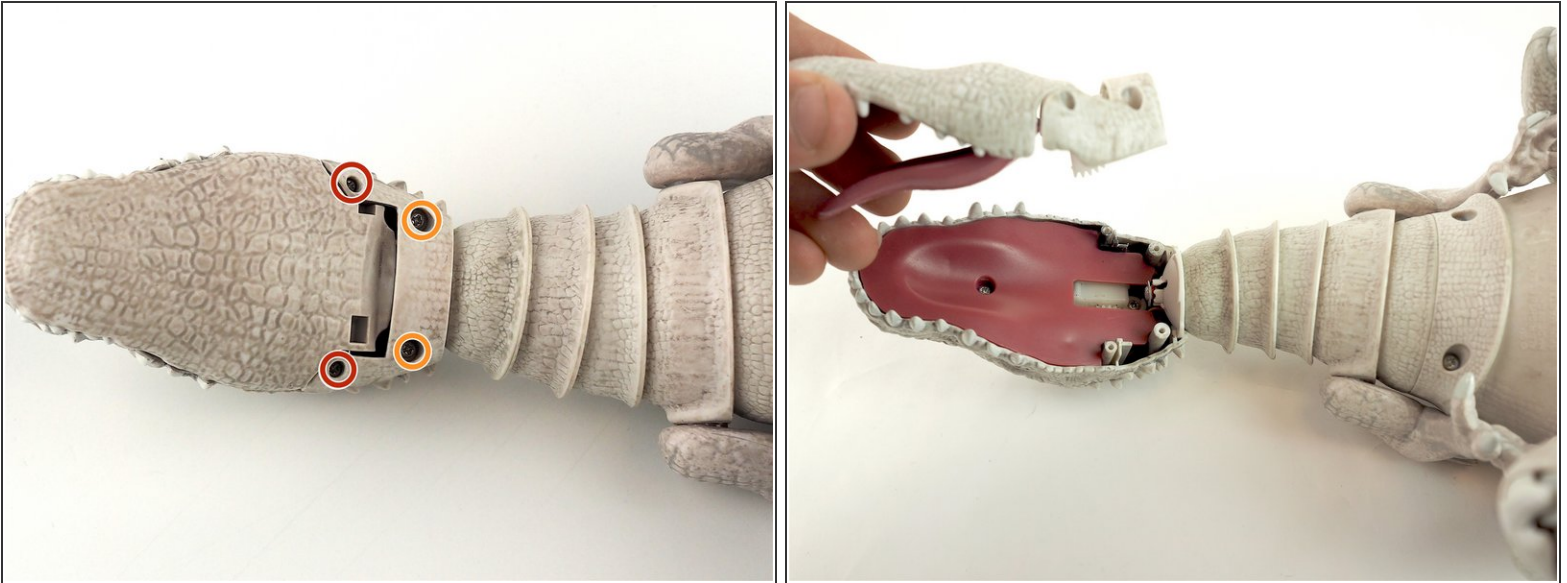
Step by step instruction to replace the lower jaw of the dinosaur.




TOOLS:

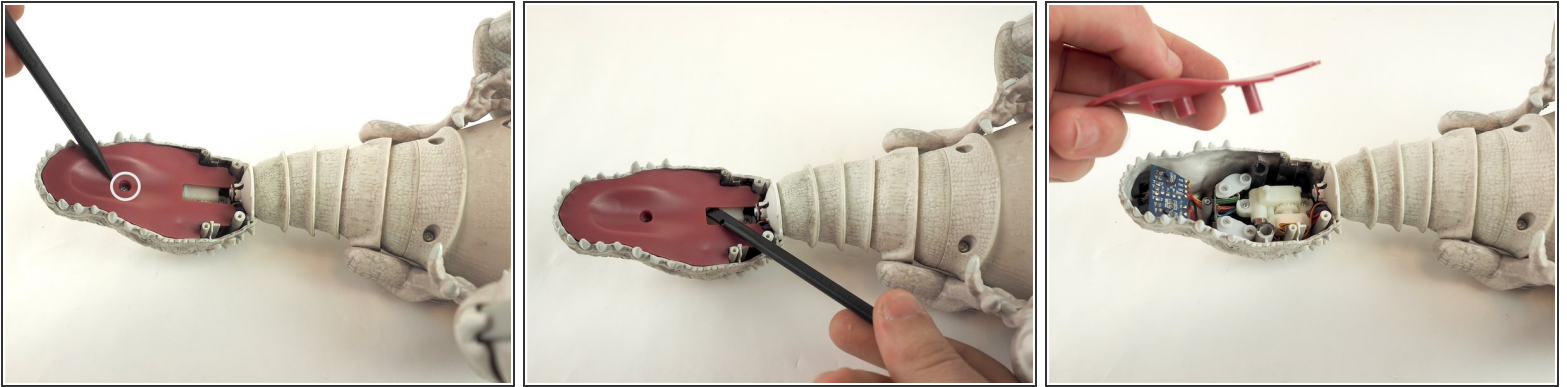
- [Heavy-Duty Spudger](#) (1)
 - [Phillips #1 Screwdriver](#) (1)
 - [Phillips #0 Screwdriver](#) (1)
-

Step 1 — Mouth Part



-  Flip the toy over to gain direct access to the first screws you need to remove for the replacement.
- Remove the two (2) 7.5mm phillips screws using Phillips #1 screwdriver from the bottom of the jaw.
 - Remove the two (2) 7.2mm phillips screws using Phillips #0 screwdriver from the bottom of the jaw.
 - Gently remove the entire bottom jaw piece.

Step 2



- Remove the 7.5mm phillips screw using Phillips #1 screwdriver from the middle of the tongue.
- Using a spudger, gently pry the tongue out of the mouth.

To reassemble your device, follow these instructions in reverse order.