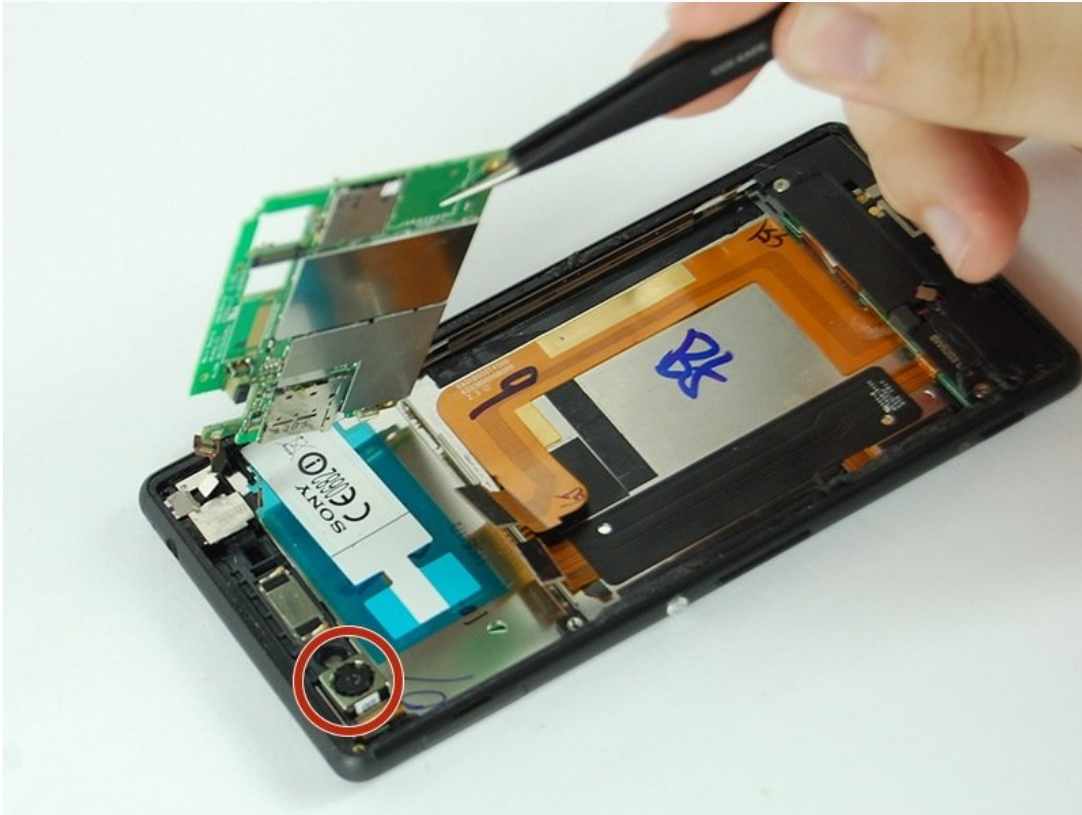




Sony Xperia M4 Aqua Front Camera Replacement

This is the step-by-step guide for replacing...

Written By: Sarah Wetzler



INTRODUCTION

This is the step-by-step guide for replacing the Sony Xperia M4 Aqua front camera.

TOOLS:

[iFixit Opening Tool](#) (1)

[Tweezers](#) (1)

[Suction Handle](#) (1)

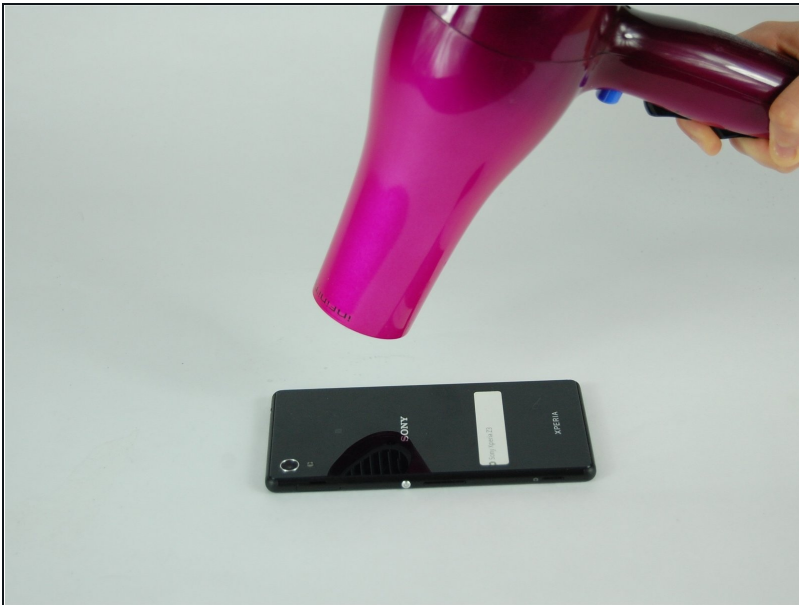
[iFixit Opening Picks \(Set of 6\)](#) (1)

[Spudger](#) (1)

[Phillips #00 Screwdriver](#) (1)

[Heat Gun](#) (1)

Step 1 — Back Cover



- Place the phone face-down, and use a heat gun or hair dryer to evenly heat the back surface until to soften the adhesive.

Step 2



- Attach a suction cup to the back of the M4 Aqua by carefully pushing down on it near the top of the phone.

Step 3



- While Pulling on the suction cup, slide a thin plastic spacer (guitar picks work well) between the back cover and the phone. Slide it around the edges to break the adhesive seal. Be careful, but don't be afraid to use some force. You should hear a sticky breaking sound.

Step 4



- Remove the back cover by pulling it from the chassis. It is flexible and can be bent, be careful.

Step 5 — Battery



- ⚠ Remove copper plated tape and any other securing adhesive with a nylon spudger. Remove carefully, as it has the potential or tear if too much force is used.

Step 6



- Unhook the battery connector carefully. It is possible to damage the battery if too much force is used.

Step 7



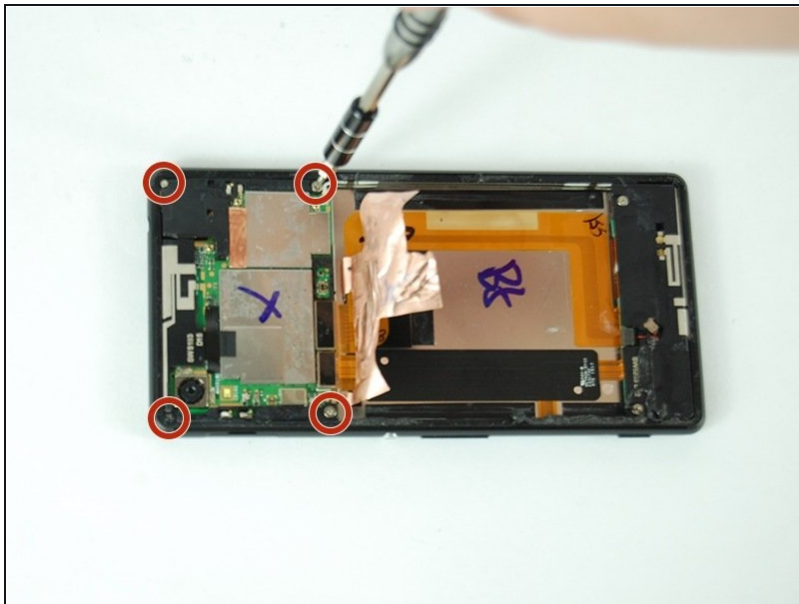
- ⚠ Pry the battery from the phone with the nylon spudger. There is a small amount of adhesive underneath the battery, so a bit of force is required. The battery is malleable, so it is possible to dent the battery if too much force is applied in one spot.

Step 8



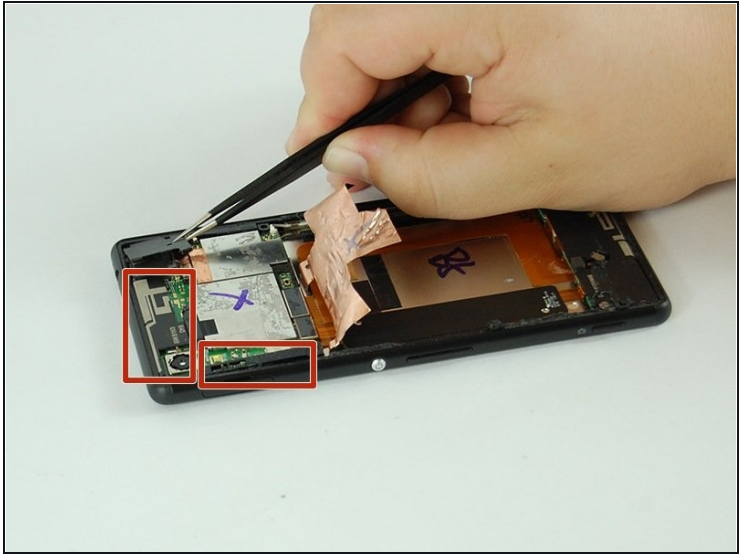
- Remove the battery once all of the adhesive is broken, and the connector is unplugged.

Step 9 — Rear Camera



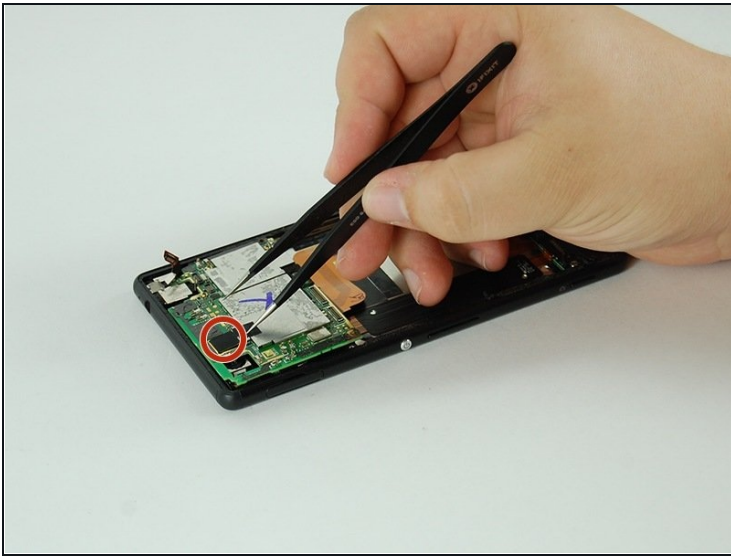
- Remove the four hex head 3mm screws at each corner of the motherboard with a screwdriver.

Step 10



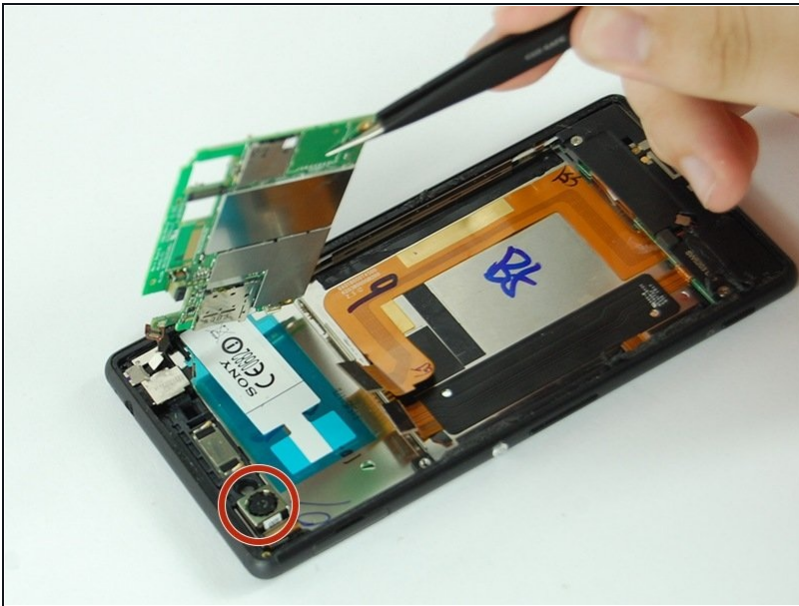
- Remove three pieces of the securing bracket using [tweezers](#)

Step 11



- Detach the rear camera connector from the front of the motherboard.
- Remove the rear camera with your fingers or tweezers.

Step 12 — Front Camera



- Release all connectors connecting to the motherboard.
- Pry the motherboard up from the left side with the plastic pry tool and remove it.

⚠ Be very careful as the motherboard is tightly bound.

Step 13



- With your fingers, detach front camera connector from the back of motherboard.
- Remove the front camera.

To reassemble your device, follow these instructions in reverse order.