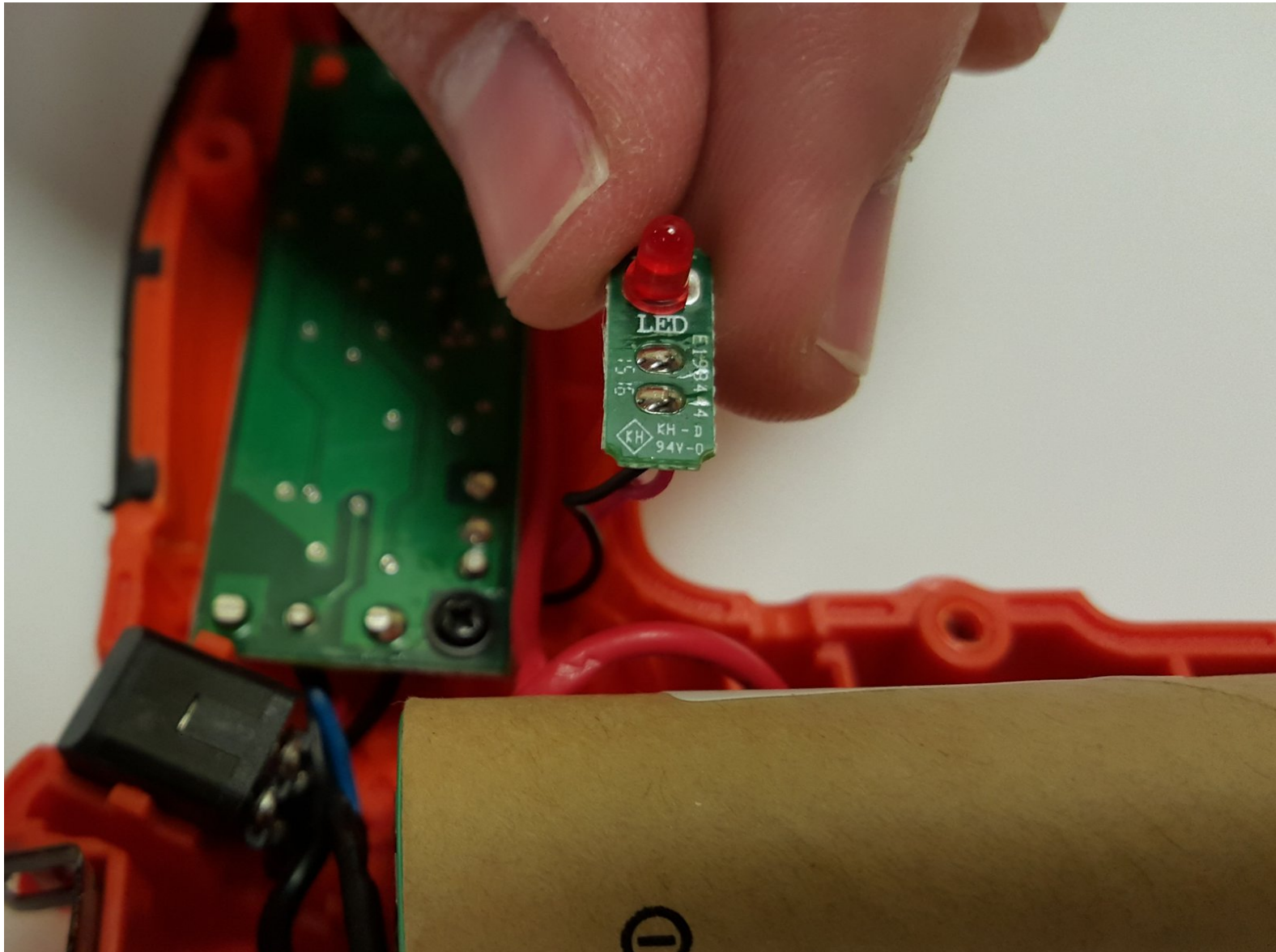




# Black and Decker LDX172C LED Power Indicator Replacement

Use this guide to replace the LED Power Indicator your Black and Decker LDX172C cordless drill

Written By: Casey



## INTRODUCTION

This guide will walk you through the steps to replace a faulty LED Power Indicator in a Black and Decker LDX172C cordless drill. Steps one through three walk you through the disassembly process and step four walks you through LED removal and replacement. Tools necessary for this operation include a Philips screw driver set and a soldering work station. Approximate repair time is 40 minutes.



### TOOLS:

- [Soldering Iron](#) (1)
  - [Phillips #2 Screwdriver](#) (1)
-

## Step 1 — LED Power Indicator



- ⚠ Before beginning, make sure the motor direction switch is in the neutral position.
- Place the drill on the work surface with the chuck facing downward. Locate and remove the two #2 X 10mm Phillips screws located right of the motor.

## Step 2



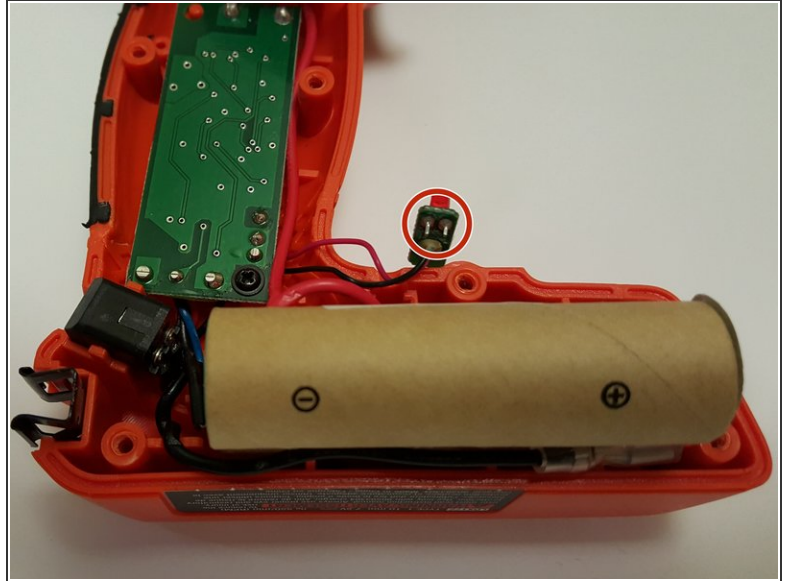
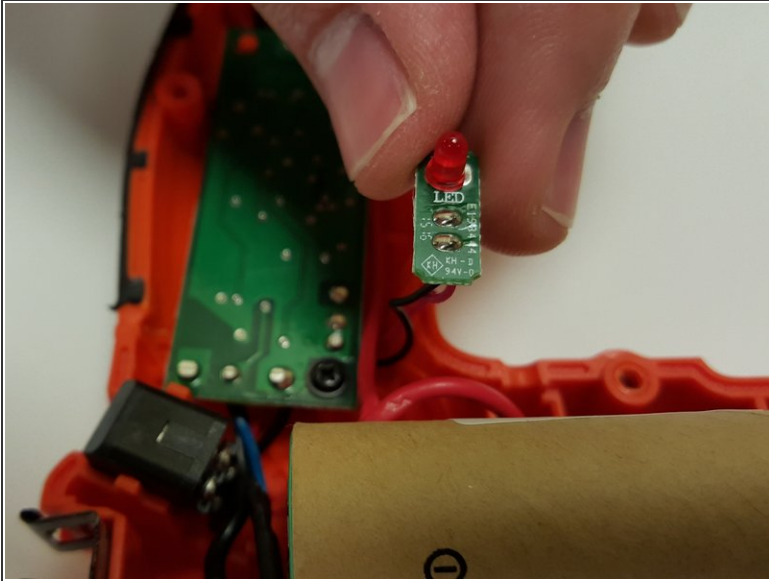
- Rotate the drill to its left side - the chuck should be facing rightward. Locate and remove the eight #2 X 5mm Phillips fasteners from the body of the drill.

## Step 3



- Carefully remove the right half of the body from the drill.
- ⓘ The trigger mechanism is spring loaded and may eject from the drill when the body is removed.
- Locate the LED power indicator located just above the battery pack.

## Step 4



- The LED is located on a small surface mount circuit board that easily slides out of its mounting location.
- The LED is removed by freeing the solder joints on the bottom side of the circuit board.
- Place the new LED through the same holes and re-solder it.
- To reassemble repeat directions in reverse order.

To reassemble your device, follow these instructions in reverse order.