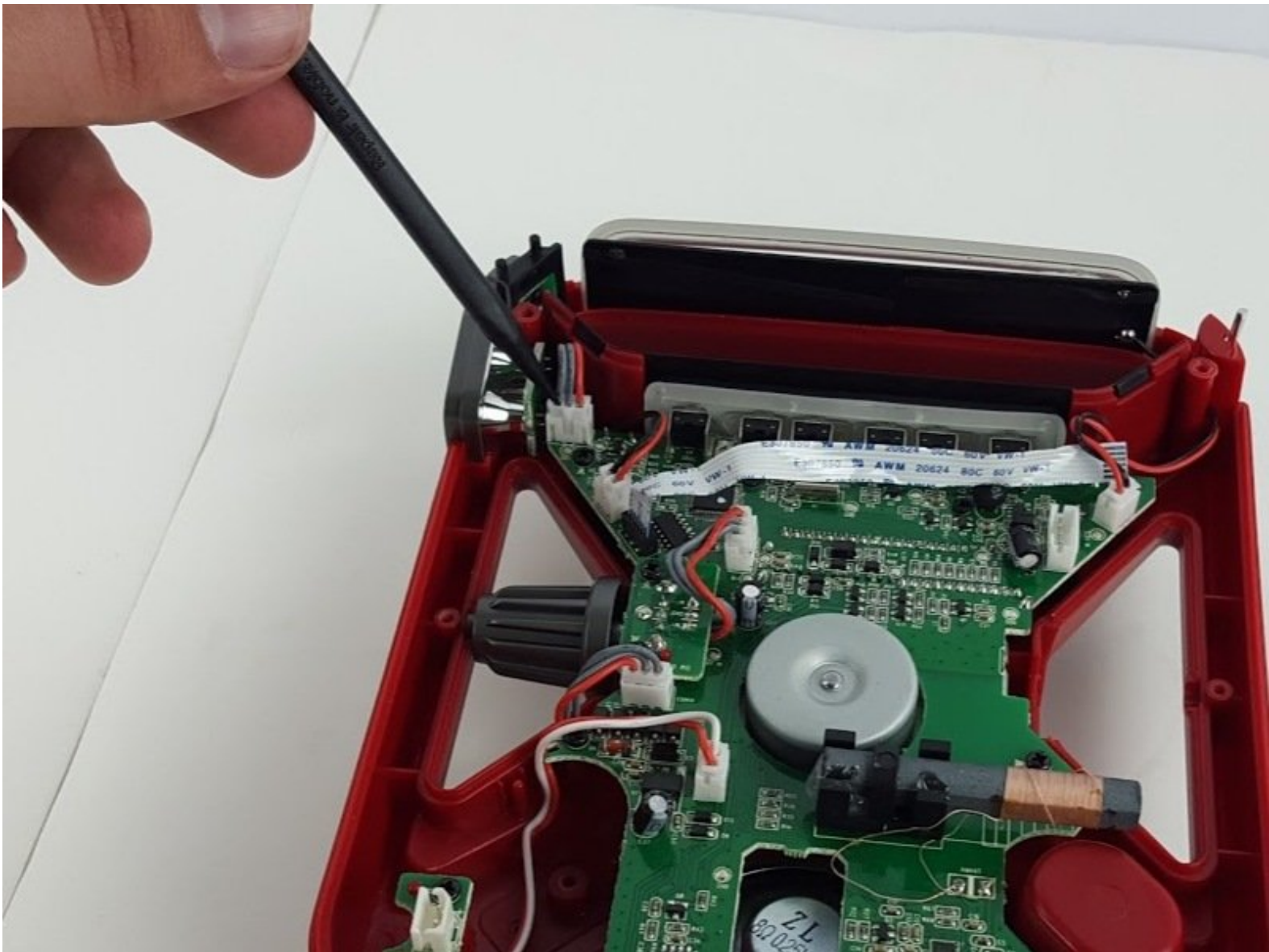




# Eton FRX3 LED Flashlight Replacement

Replace the LED flashlight of the Eton FRX3.

Written By: Kenneth Sills



# INTRODUCTION

LEDs last for a really long time, but alas, not forever. You may find the need to replace the LED module in the future, but it's just a matter of opening the case and pulling it out!

---

## TOOLS:

- [iFixit Opening Tools](#) (1)
  - [Phillips #00 Screwdriver](#) (1)
  - [Phillips #0 Screwdriver](#) (1)
  - [Phillips #1 Screwdriver](#) (1)
  - [T10 Torx Screwdriver](#) (1)
-

## Step 1 — Rechargeable Battery Pack



- Pull the plastic tab on the battery compartment cover panel to loosen it, then pull the panel off.

## Step 2



- Disconnect the battery pack wires from the device and remove the battery pack.

### Step 3 — Case Assembly



- On the bottom of the device case's face are two T10 screws. Use a T10 Torx screwdriver to remove the two screws.

### Step 4



- While using the T10 screwdriver, remove the two T10 screws on the back of the device's case.



## Step 5



- Remove the two Phillips #00 screws located in the center of the back of the device.
- ⓘ You will need to use a thin shafted screwdriver or a female hexagonal bit that is found in the iFixit 54 bit toolkit to extend the reach of the Phillips #00 bit.

## Step 6



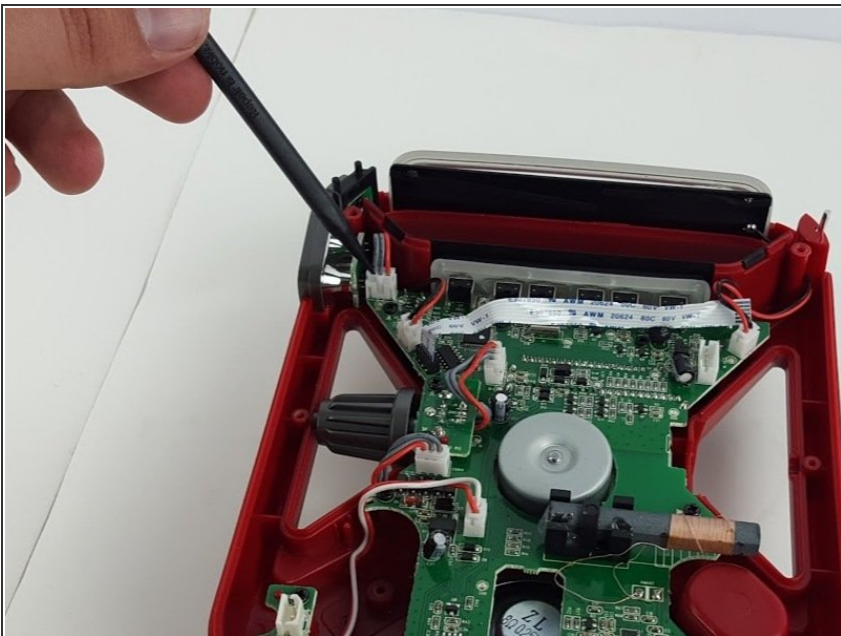
- On the bottom of the device's case there are two rubber feet. Pry the rubber feet off of the case.
- ★ Try to keep the adhesive on the rubber feet as clean as possible to insure that they can be reattached during reassembly.

## Step 7



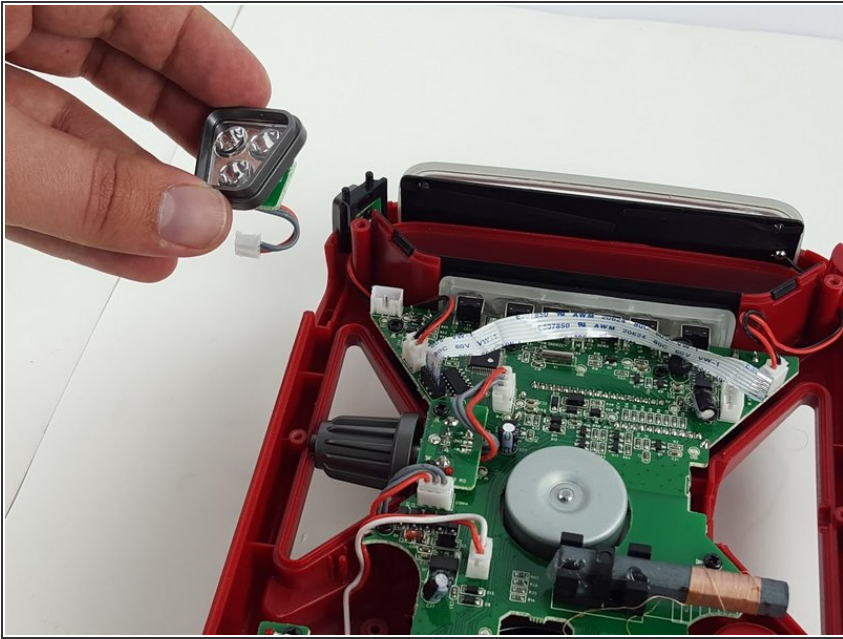
- Pull the two halves of the device's case apart.
- ⚠ Take care when pulling the two halves apart. There are three cables that connect components of the device to the motherboard. Disconnect these cables in order to separate the two halves of the device's case.

## Step 8 — LED Flashlight



- Pull the LED modules connector from its socket on the mother board.

## Step 9



- Gently lift the LED module upwards to remove it.

To reassemble your device, follow these instructions in the reverse order.