



# Black and Decker WP900 Motor Replacement

Have a problem with the rotation of the device? This repair guide will provide instructions for replacing the motor.

Written By: Stefan Wolowec



## INTRODUCTION

This page gives instructions for disassembling the Black and Decker WP900 6-Inch Orbital Waxer and Polisher to the point where the motor can be fully removed and replaced.

---

### TOOLS:

- [iFixit Opening Tools](#) (1)
  - [Phillips #1 Screwdriver](#) (1)
  - [Flathead 3/32" or 2.5 mm Screwdriver](#) (1)
-

## Step 1 — Motor



- Using the plastic tool, detach the handle tab as shown.

 Make sure the device is unplugged.

## Step 2



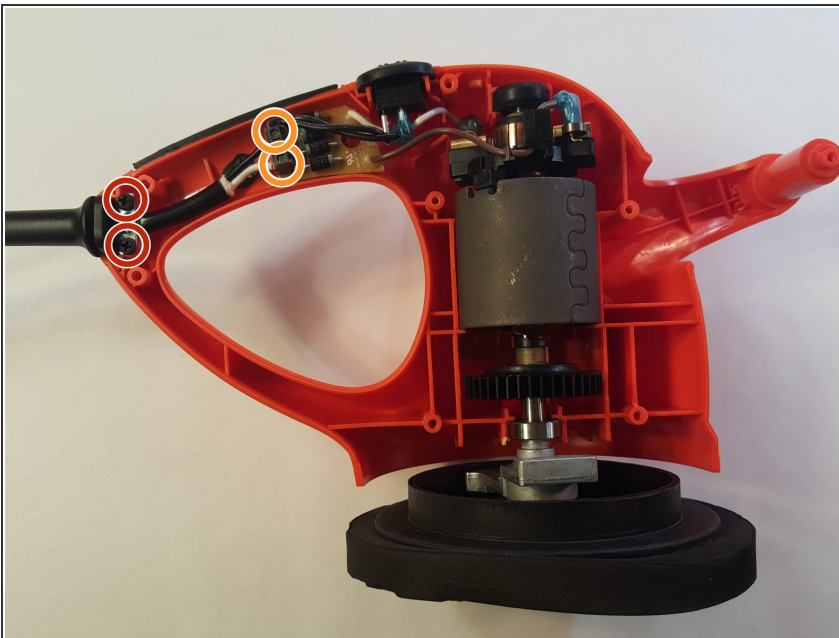
- Using the Philips #1 screwdriver, unscrew all of the screws. There should be 8-30mm screws to remove.
- Be sure to keep track of where each screw was placed in the device for later reassembly.

### Step 3



- Remove the back panel of the external casing, leaving all internal components resting in the front panel.
- Remove the black handle from the main external casing.

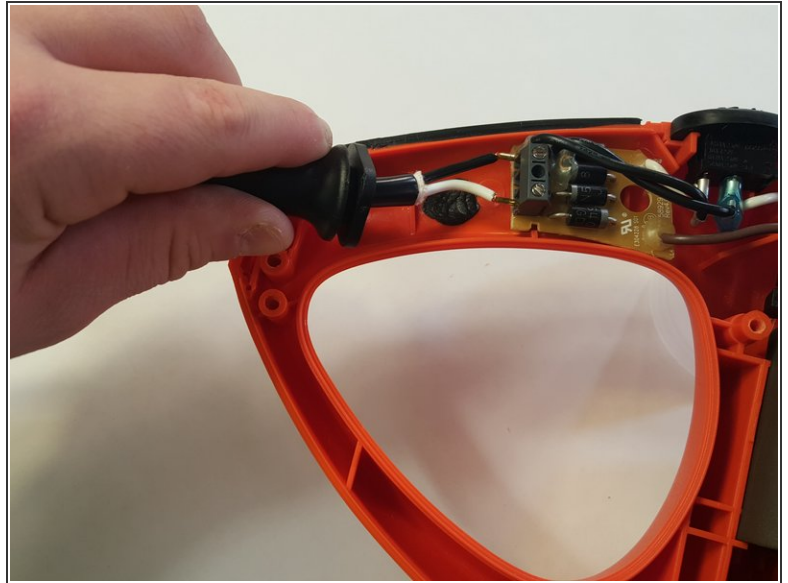
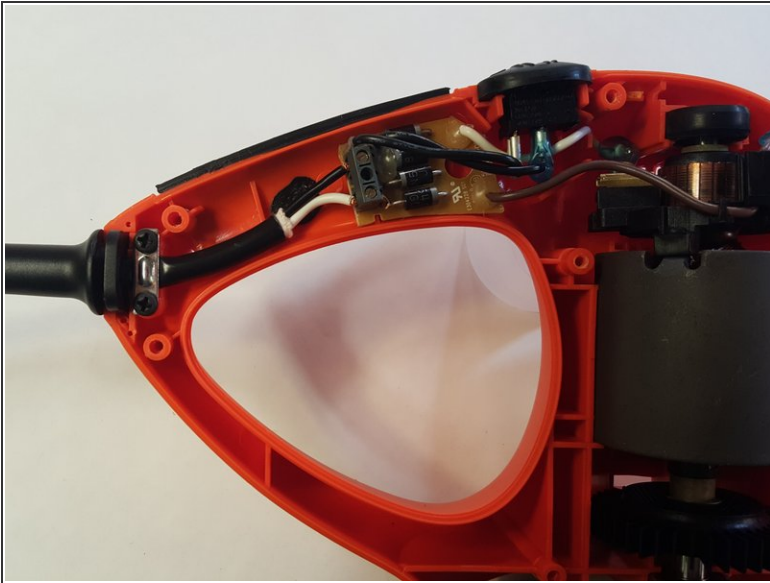
### Step 4



- Loosen the power cord and control panel. Using the Phillips #1 screwdriver, remove two 22mm screws.
- ⓘ The metal bracket will detach with the two screws.
- Using the Flathead 3/32" screwdriver, remove two 22mm screws.



## Step 5



- Gently pull the power cord out from the control module.

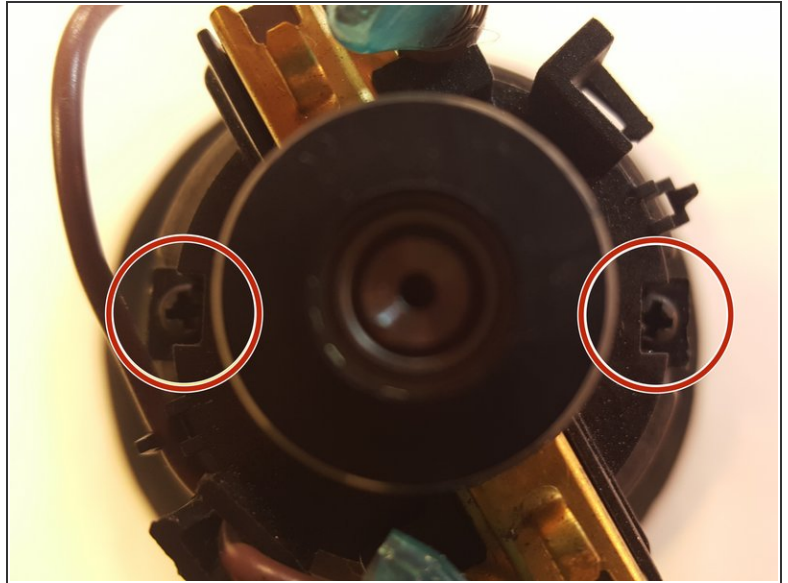
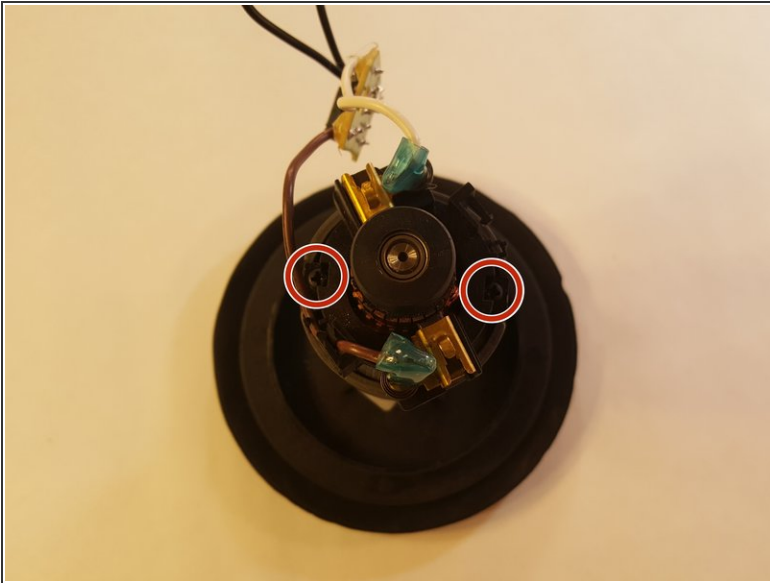
⚠ Remember, when you're reassembling the device, the black wire should be on the top.

## Step 6



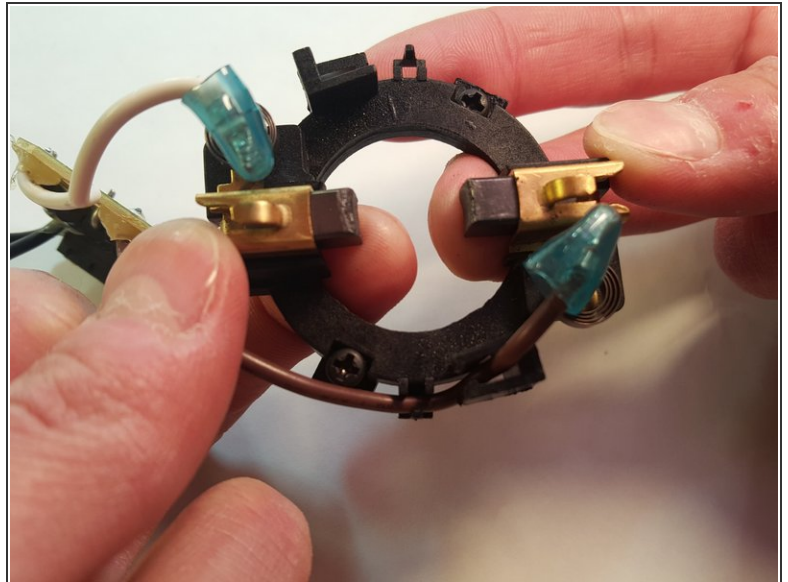
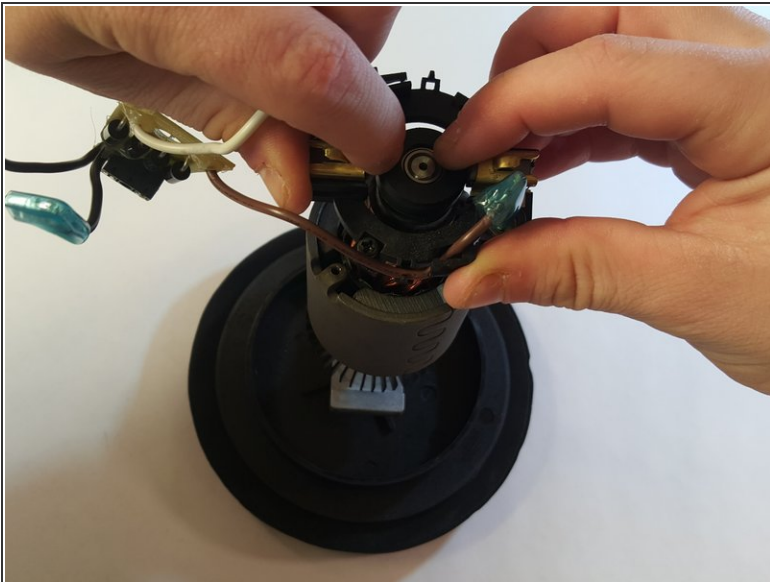
- Firmly grasping the motor, dislodge the internal components from the frontal external casing.
- ⓘ Switch and control panel are attached to the motor.

## Step 7



- Using a Phillips #1 screwdriver, remove the two 22mm screws securing the brush assembly to the motor.

## Step 8



- To fully remove the brush assembly from the motor, push the brushes (enclosed in the gold ribbing) outward and pull up.

## Step 9



- With a large amount of force, pull the motor up and off of the wire coil.

To reassemble your device, follow these instructions in reverse order.