



# Nikon Coolpix L330 LCD Screen Replacement

Removal of the LCD screen on a Nikon Coolpix L330

Written By: Rajeev



## INTRODUCTION

This guide will show you how to access the LCD screen to replace it, or simply clean dust from under the clear plastic cover.

---

### TOOLS:

- [Phillips #000 Screwdriver](#) (1)
  - [iFixit Opening Tools](#) (1)
  - [Screwdriver](#) (1)
-

## Step 1 — Back Housing



- There are six screws attaching the back housing to the camera. Remove the screws from the body with a PH000 screw head.
  - Two 1.5x2.5mm screws on the right side.
  - Two 1.5x2.5mm screws on the underside.
  - Two 1.5x2.5mm screw on the left side.

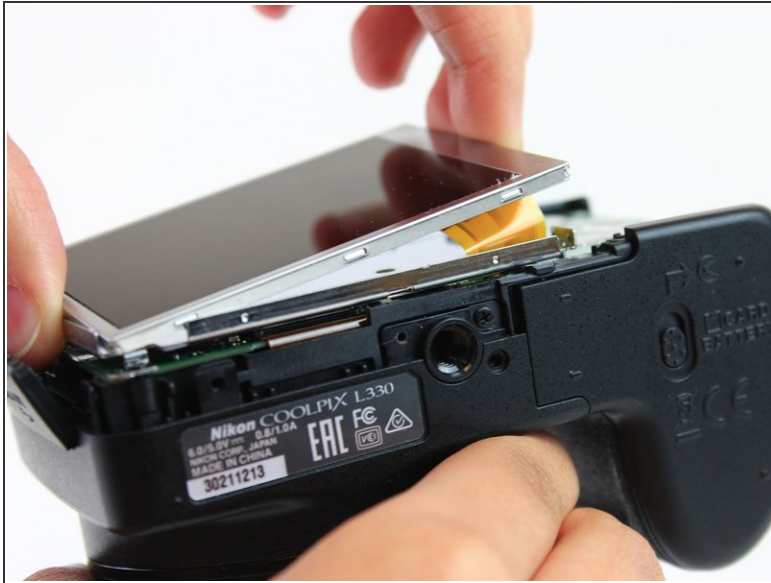
## Step 2




- After removing the screws, use a metal spudger or plastic opening tool to push the back cover out.
- ⚠ The metal spudger can damage the plastic housing, so use caution when applying any pressure to it. Use a plastic opening tool to reduce the risk of damage to the housing.
- Remove the back housing of the camera by lifting it directly up.
- ⓘ The back cover may be slightly tight, therefore more force may be needed to lift it up.



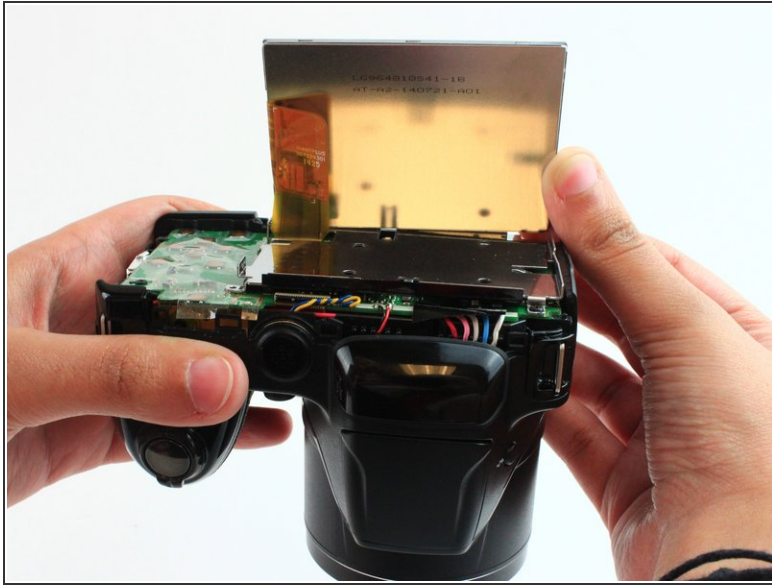
## Step 3 — LCD Screen



- Insert the tips of your fingers into the space between the screen and back-plate.
- Gently lift the screen up and out of the frame.

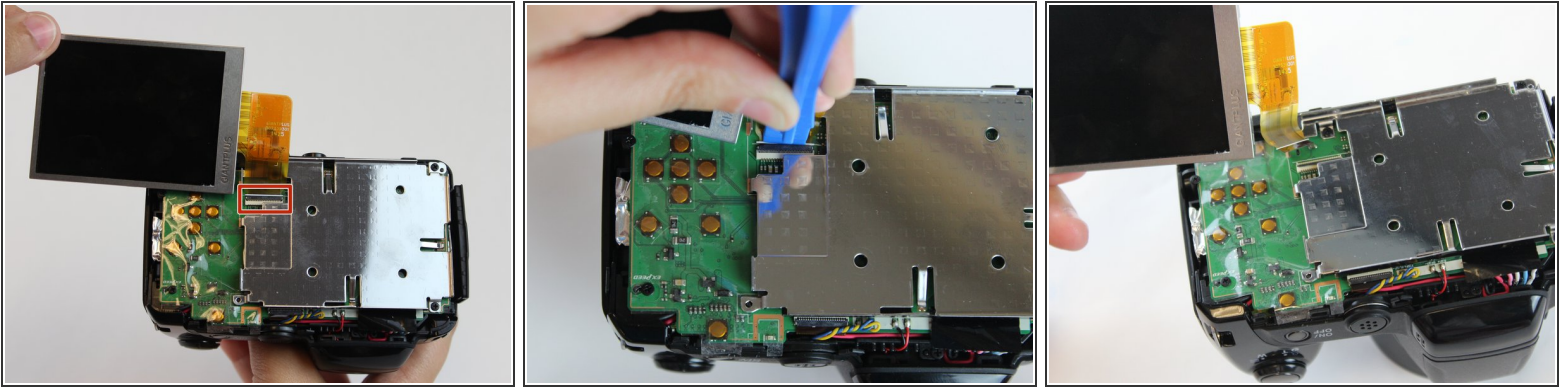
 The screen is still held by a flexible display cable, therefore only lift the screen 0.5" out of the back-plate.

## Step 4



- Tilt the screen so that the display cable forms a hinge with the backplate.
- Rotate the display 180 degrees so that it faces you.

## Step 5



- ❗ The display cable has a ZIF (zero insertion force) connector on the end. This has a tab that has to be pushed out before the cable can be safely removed.
- Using a plastic opening tool or fingernail, pop up the black clip holding the display cable. This will release the cable.
- Slide the display cable out of the connector.
- ⚠ The display cable can be damaged due to excessive bending, therefore avoid putting unnecessary strain on it.

To reassemble your device, follow these instructions in reverse order.