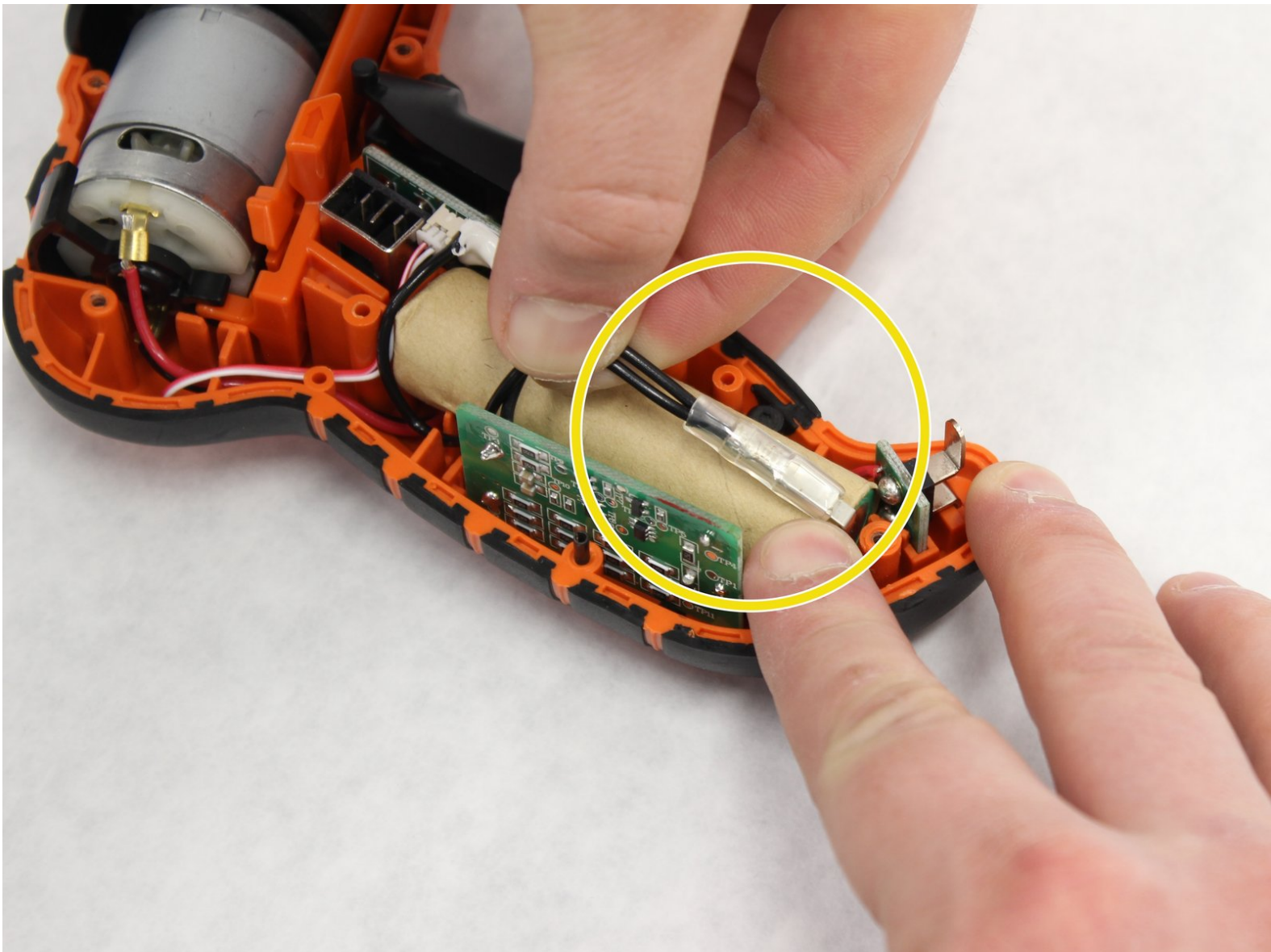




Black and Decker LI4000 Battery Contact Board Replacement

Replace the battery contact board if screwdriver will not charge and battery contacts appear to be damaged.

Written By: Nigel Leitzell



INTRODUCTION

The battery contact board is an internal component and will require disassembly of the screwdriver casing. Due to disassembly of the casing, you will be required to use a few special tools listed in the outer casing replacement guide. Consult the outer casing replacement guide for instructions on removing the casing. Also, use caution when working on the screwdriver internally - always unplug the battery before replacing any components. This guide will also require a soldering iron and basic soldering skills for replacing the battery contact board.

TOOLS:

- [Heavy-Duty Spudger](#) (1)
 - [Metal Spudger](#) (1)
 - [Phillips #1 Screwdriver](#) (1)
 - [Screwdriver](#) (1)
 - [Soldering Iron](#) (1)
 - [Solder](#) (1)
-

Step 1 — Outer Casing



- Remove the stickers found on the bottom and sides of the LI4000, using a spudger.

Step 2



- Remove all six of the 12-mm long case screws with a Philips #1 Screwdriver. These screws can be found on the side of the LI4000 with the "Warning" sticker.

Step 3



- Remove the two screws that are 4-mm Hexagonal #2.5. These are very small case screws that can be found underneath the two stickers from Step 1.

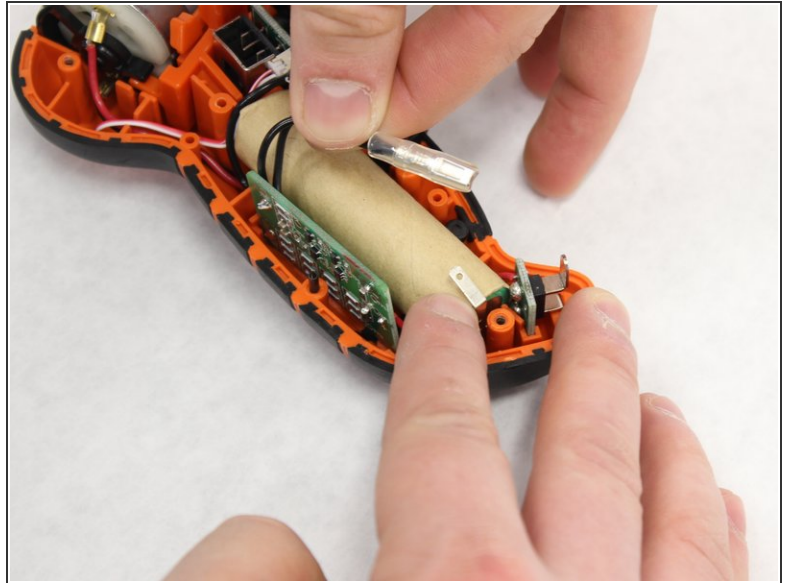
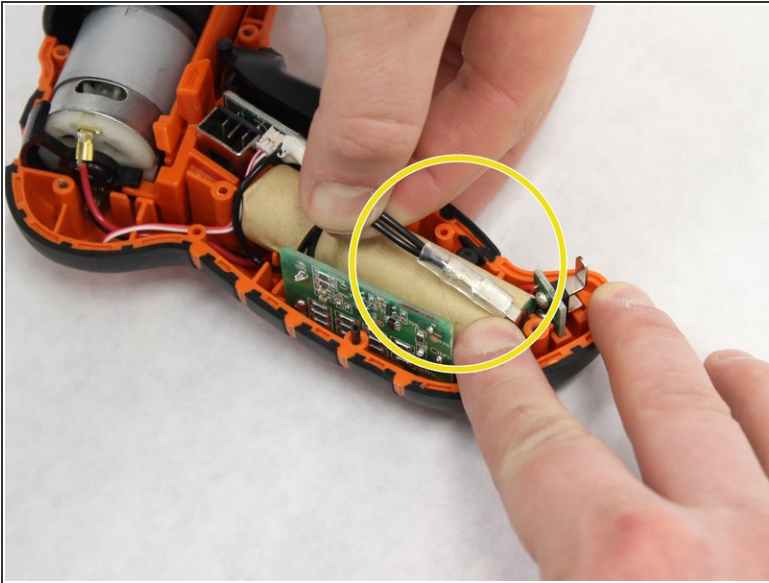
Step 4



! When working with electronics, it's important to choose a tool that's ESD-safe to avoid accidental damage to the device. The metal spudger is great when you need serious prying power, but the regular black nylon spudger or a plastic opening tool should be used whenever possible.

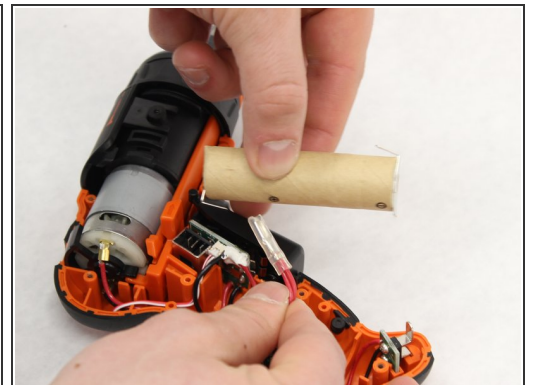
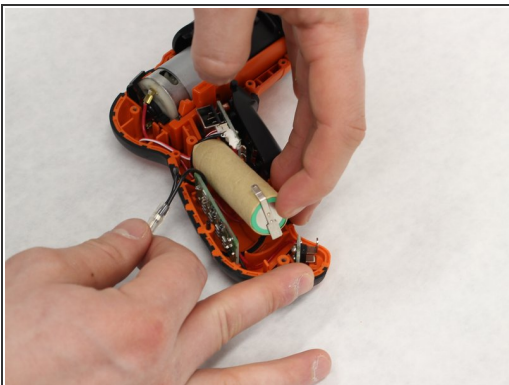
- Pry on the seam as shown with a Spudger, in order to get the top casing loose.
- Pull the two sides apart while making sure the side that you are removing is the one with all of the case screw holes.
- i** It is good practice to remove the top connection of the battery as shown in the third image, as this will be the first step to replacing any of the components for this screwdriver.

Step 5 — Battery Contact Board



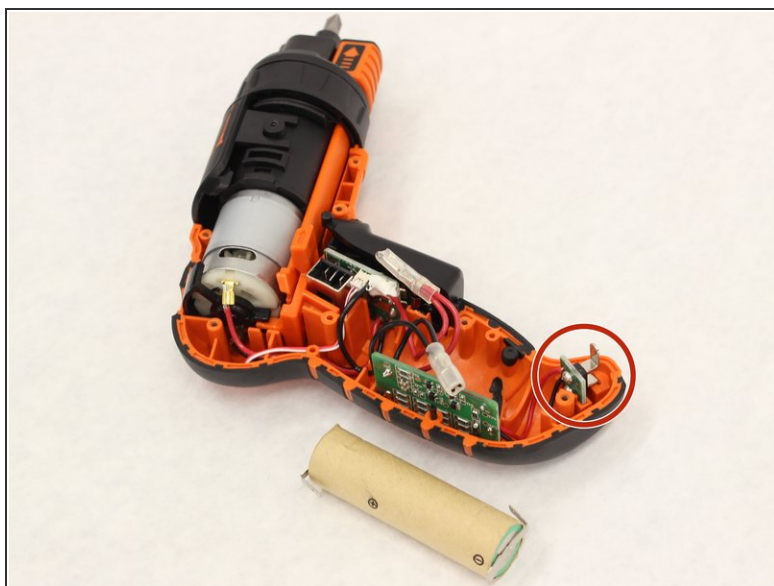
- After consulting the replacement guide for steps on removing the outer casing, locate the negative terminal of the battery.
- Remove the negative (black) wire by pulling back gently.

Step 6



- Gently pull up on the end of the battery closest to the negative terminal. Pulling the battery up should reveal the positive (red) wire located on the opposite end of the battery.
- To free battery, gently pull back on the positive (red) wire.


Step 7



- Set battery aside in a safe place.
- Locate the battery contact board near the bottom/rear side of the screwdriver.
- Gently pull up on the battery contact board.

Step 8



 Ifixit has a quick tutorial on soldering [here](#).

- Locate the two solder joints on the side opposite to the contacts. Remove solder with soldering iron. Once the solder joints are removed, the battery contact board should be freed.

To reassemble your device, follow these instructions in reverse order.