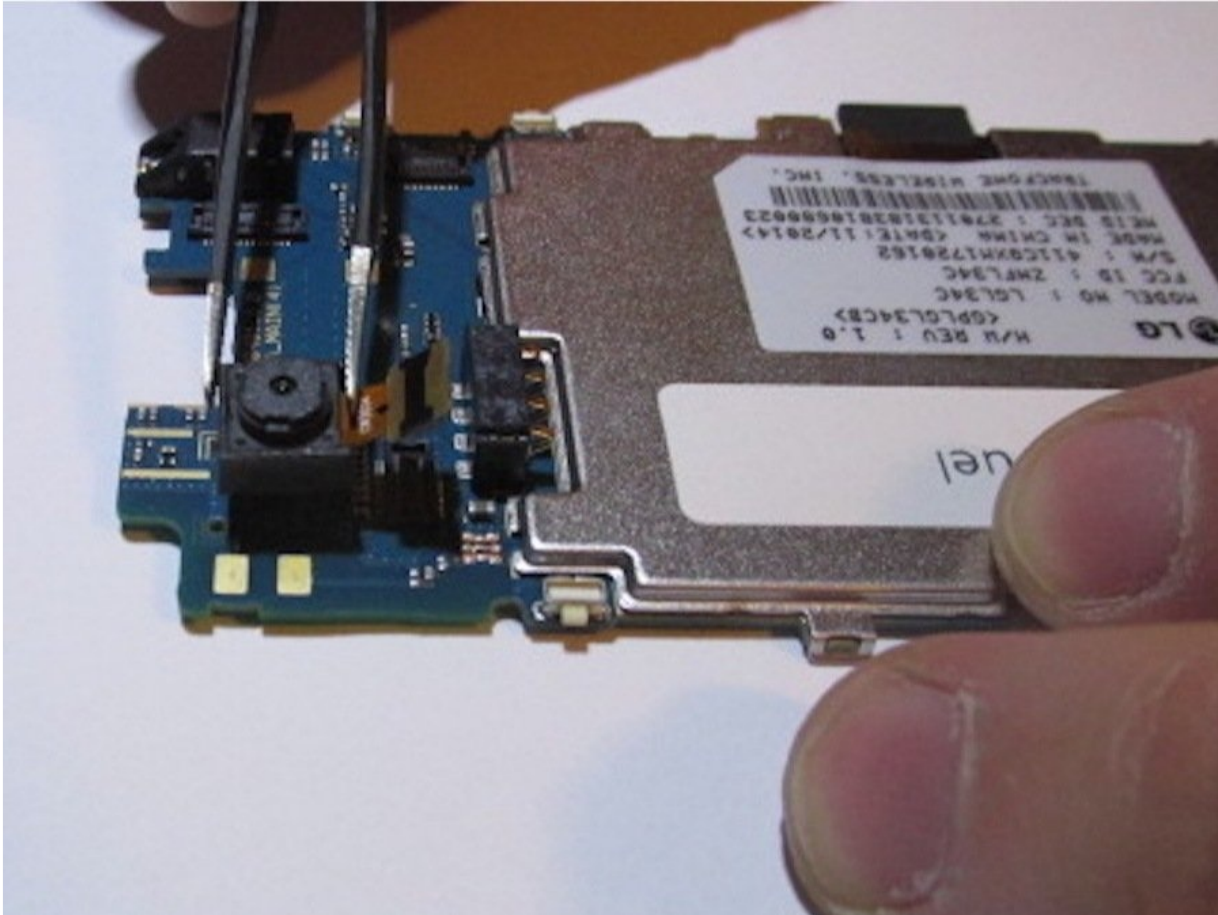




LG Optimus Fuel Camera Replacement

How to replace the camera in your LG Optimus...

Written By: Jason Owen



INTRODUCTION

How to replace the camera in your LG Optimus Fuel. You may want to do this if your camera has become damaged and/or has quit working properly.

TOOLS:

[Phillips #00 Screwdriver](#) (1)
[iFixit Opening Tool](#) (1)
[Precision Tweezers Set](#) (1)

PARTS:

[LG Optimus Fuel Camera](#) (1)

Step 1 — Battery



- Use the opening on the right side of the phone to pull off the plastic back cover.

Step 2



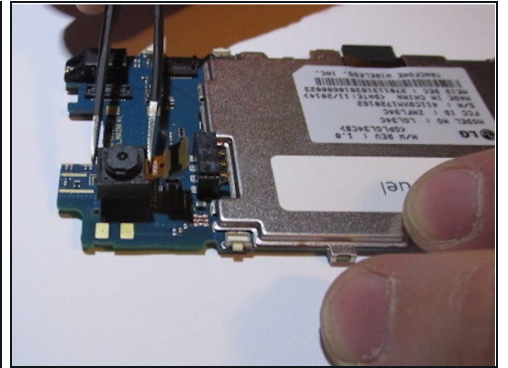
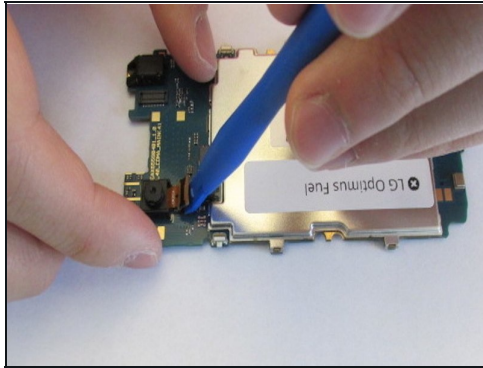
- Use the curved opening at the center-bottom of the battery to carefully remove the old battery.

Step 3 — Camera



- Remove the six 1.4mm screws using a Phillips head screwdriver with a size PH00 head and remove the back panel with a plastic opening tool.

Step 4



- The camera has been secured to the circuit board using an adhesive. Use a plastic opening tool and precision [tweezers](#) to remove it. Don't be afraid to use a little force when pulling at the camera.

To reassemble your device, follow these instructions in reverse order.