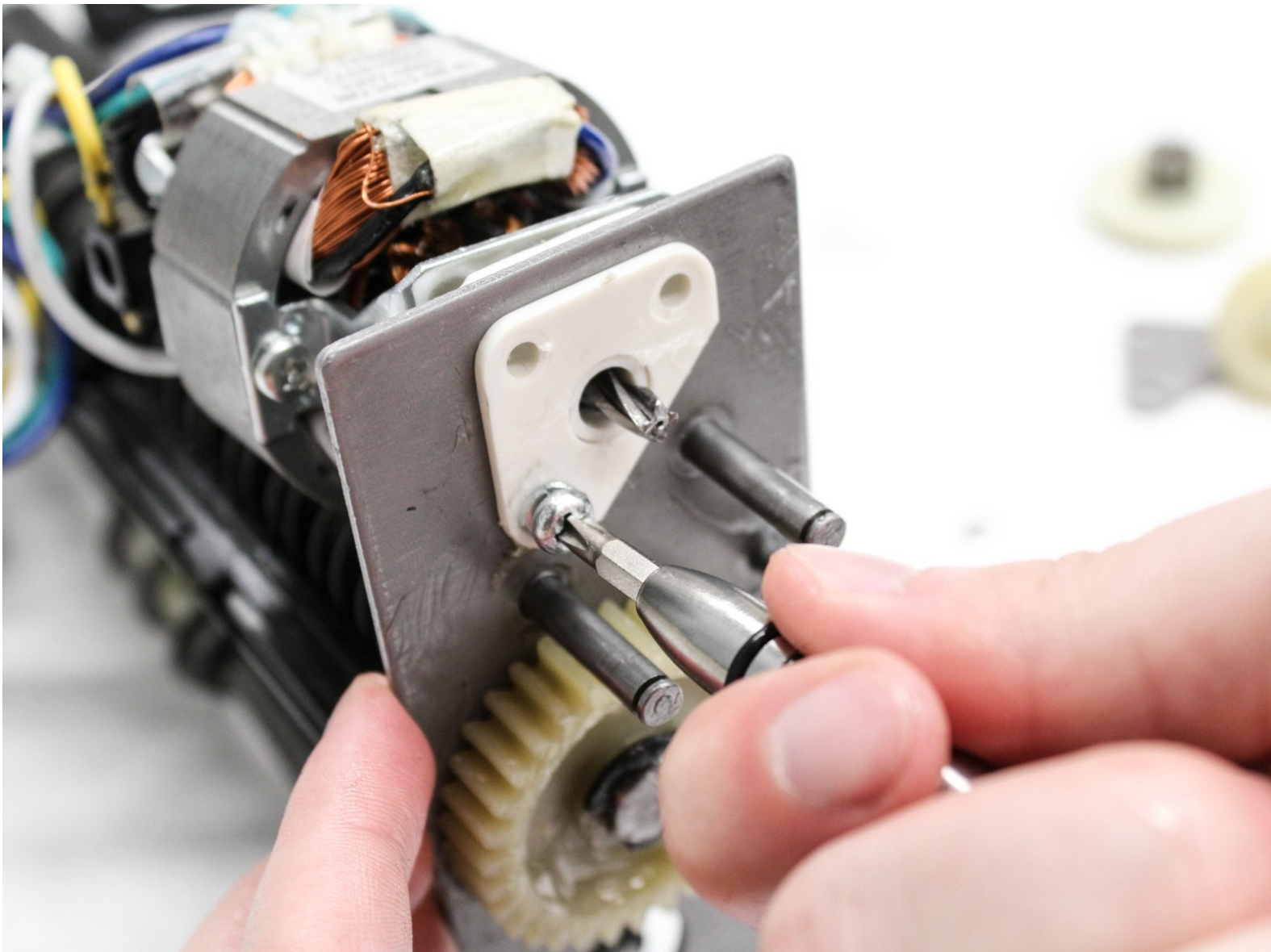




AmazonBasics B0050BPWBQ Activation Sensor Replacement

If your paper shredder no longer activates the shredding blades when paper is placed in the feed slot, the activation sensor may need to be replaced.

Written By: Natalie Meert



INTRODUCTION

This guide shows how to replace an activation sensor that is no longer functional. The activation sensor is located in the middle of the feed slot so this guide will show you how to access this in order to replace it.





TOOLS:

- [Phillips #1 Screwdriver](#) (1)
-

Step 1 — Front and Back Panel Disassembly



-  The unit head needs to be switched to the off position and unplugged before any disassembly.
-  When removing screws in the following steps, make sure the unit is resting on a flat surface because pieces will easily come apart.
- Remove seven 11 mm Phillips #1 screws from the underside of the head unit.

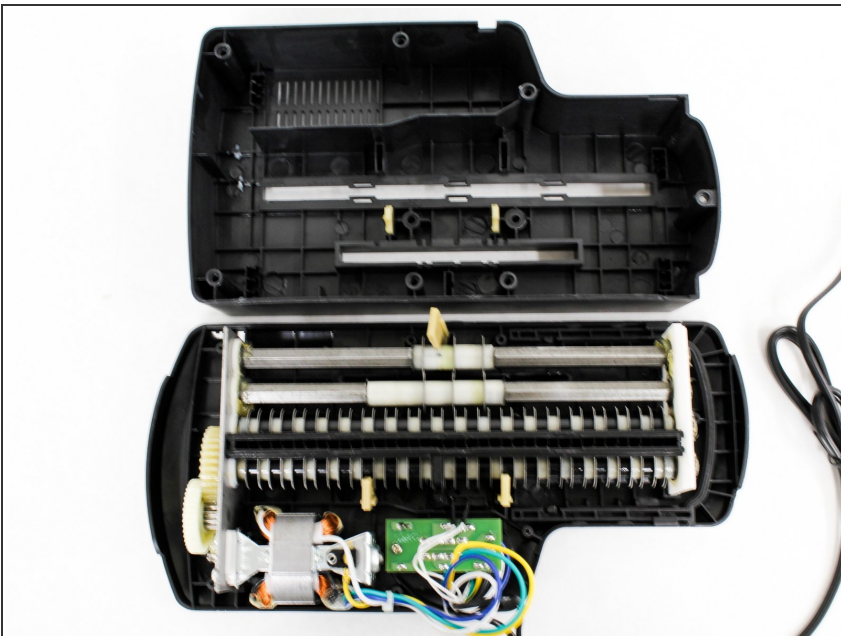
Step 2



☑ Upon removal of the next screws, the front panel and the shredding component attached to it will fall apart from the back panel so have the unit resting on a flat surface.

- Remove two 50 mm Phillips #1 screws from the middle of the underside of the head unit.

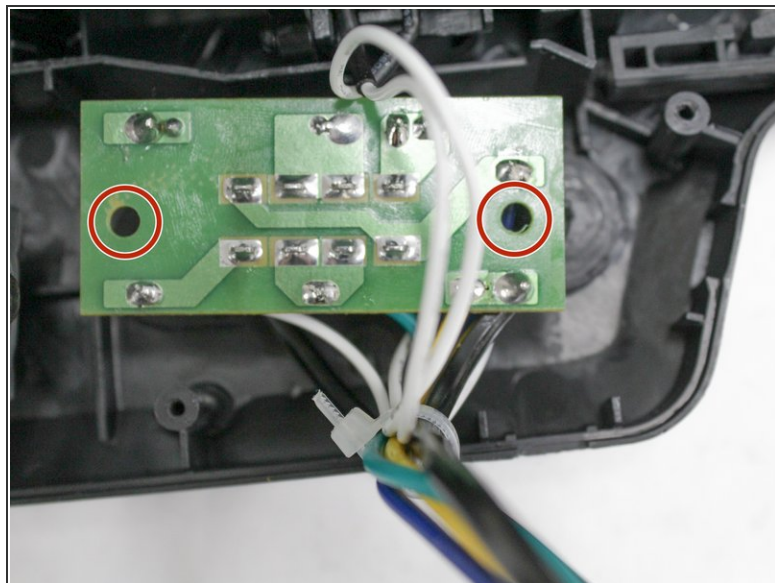
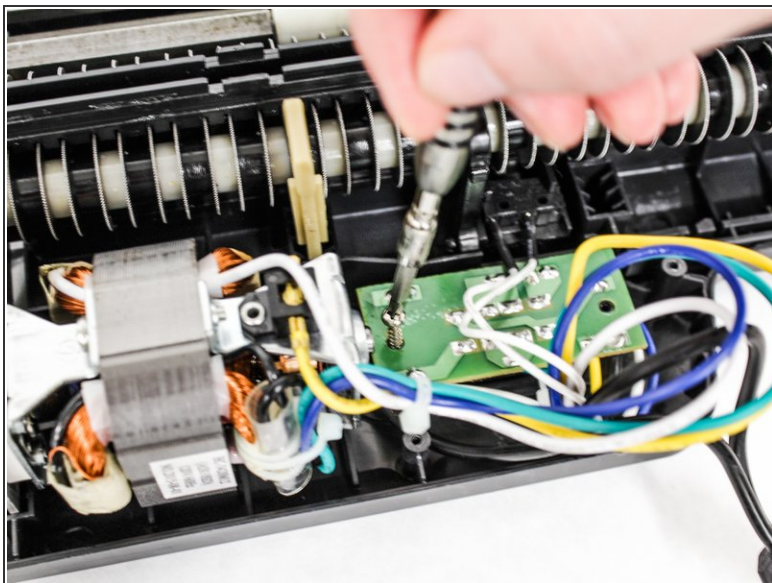
Step 3



- Lay the back panel away from the front panel on a flat surface.

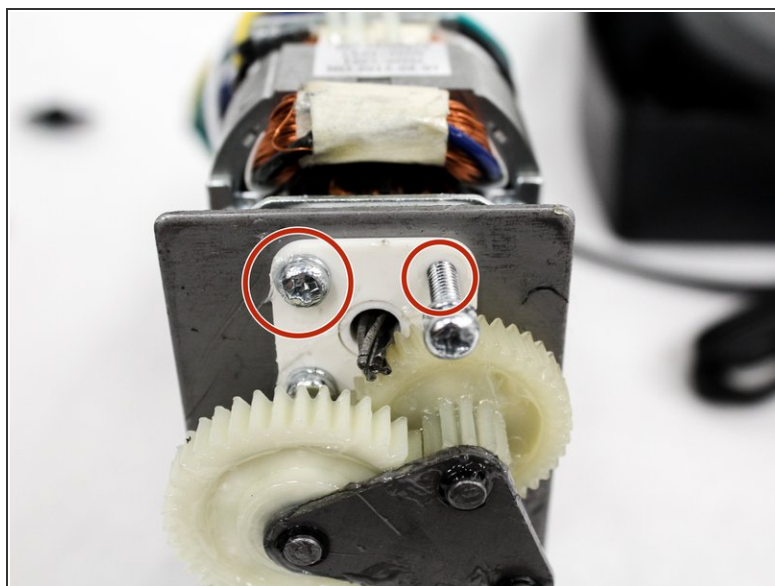
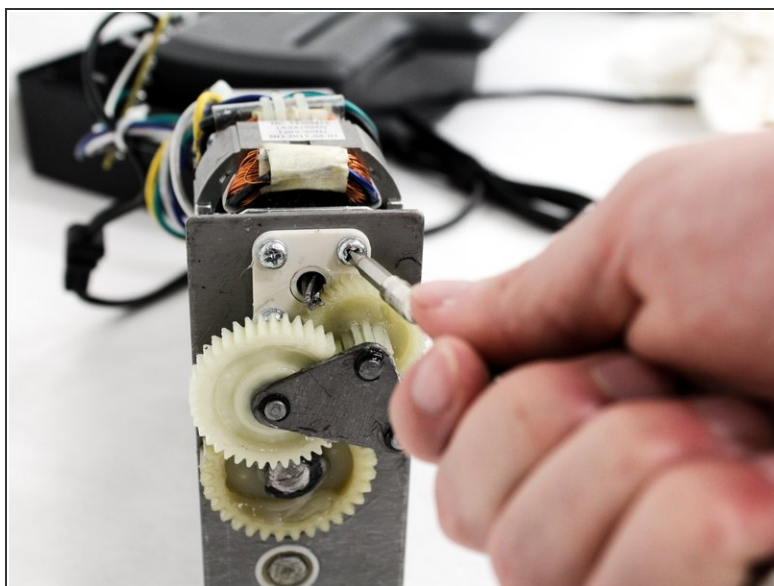
ⓘ The back panel will be light because it is only the plastic, while the front panel will be heavy with the shredding component attached to it.

Step 4



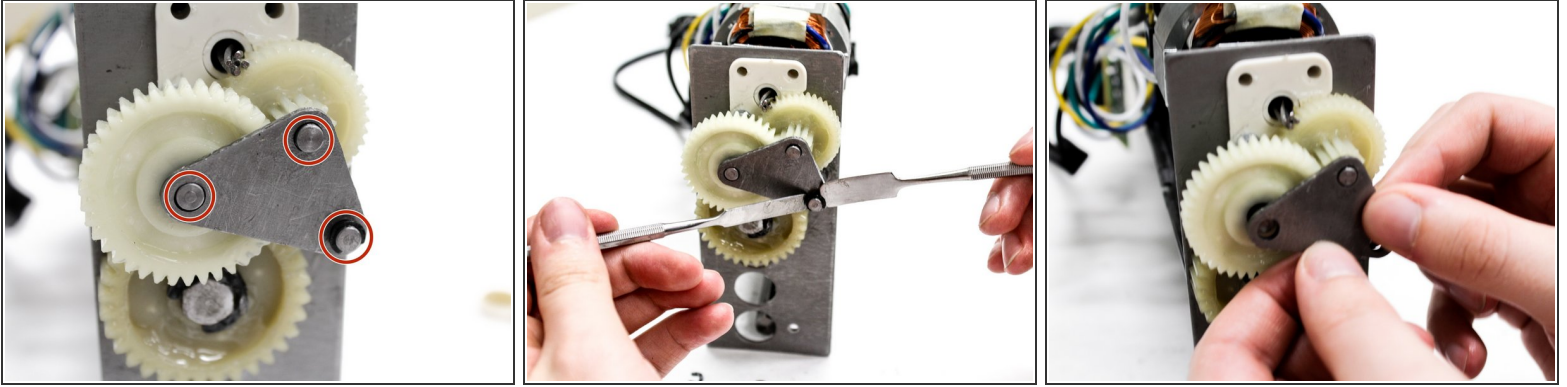
- Find the green control board that is located next to the shredding motor.
 - Remove two 11 mm Phillips #1 screws located on opposite sides of the control board.
- i** You may need to move wires over to find the screws.

Step 5 — Shredding Gears



- i** Unit may be greasy so you may want to grab paper towels/rag when completing these next steps.
- Locate the large white gears on the side of the shredding unit.
 - Remove two 15 mm Phillips #1 screws that hold the motor in place.

Step 6



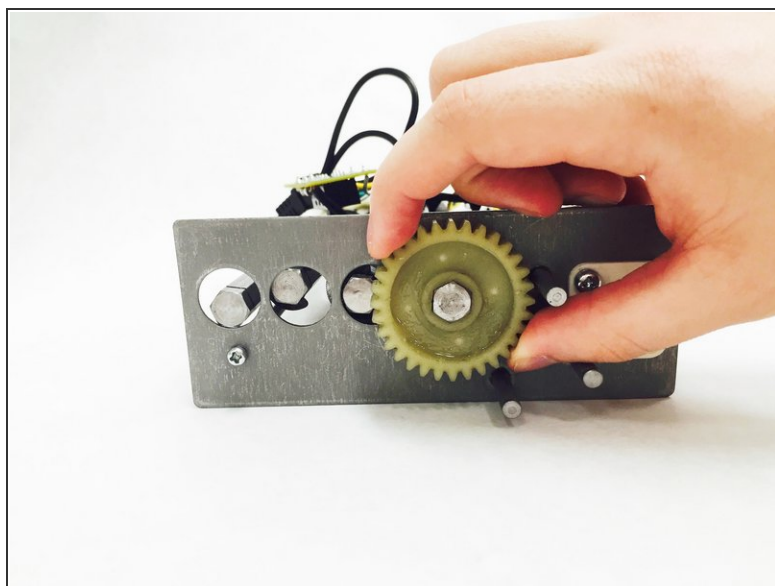
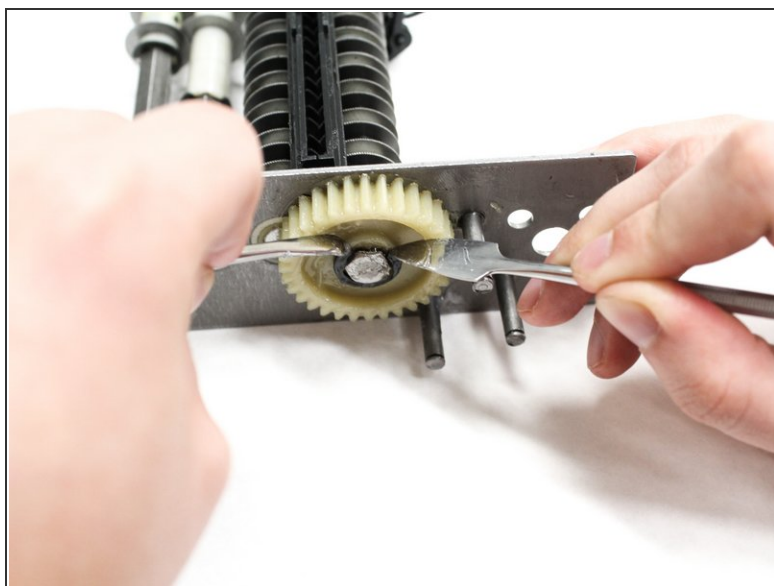
- Locate the three washers on the metal triangle piece.
- Remove the three washers using two metal spudgers. To do this, place one spudger on each of the open ends of the washer. Push down with both spudgers at the same time to pop the washer off the gear.
- Pull the metal triangle away from the gears.

Step 7



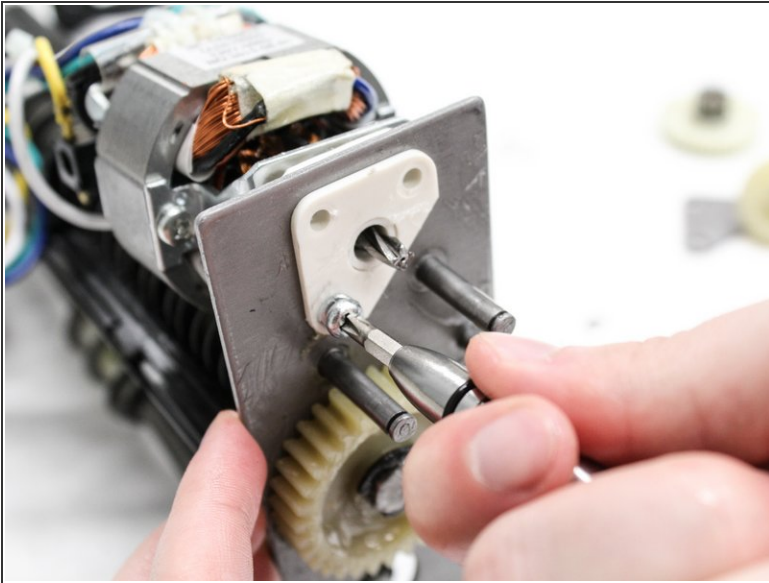
- Remove the middle gear from the shredding unit.
- Remove the top gear that was located under the middle gear.

Step 8



- Remove the washer on the last gear using two metal spudgers. Again, place one spudger on each of the open ends of the washer. Push down with both spudgers at the same time to pop the washer off the gear.
- Pull the last gear away from the metal shredding unit.

Step 9 — Activation Sensor



- Remove the last 15 mm Phillips #1 screw from the plastic triangle piece on the side of the shredding unit.

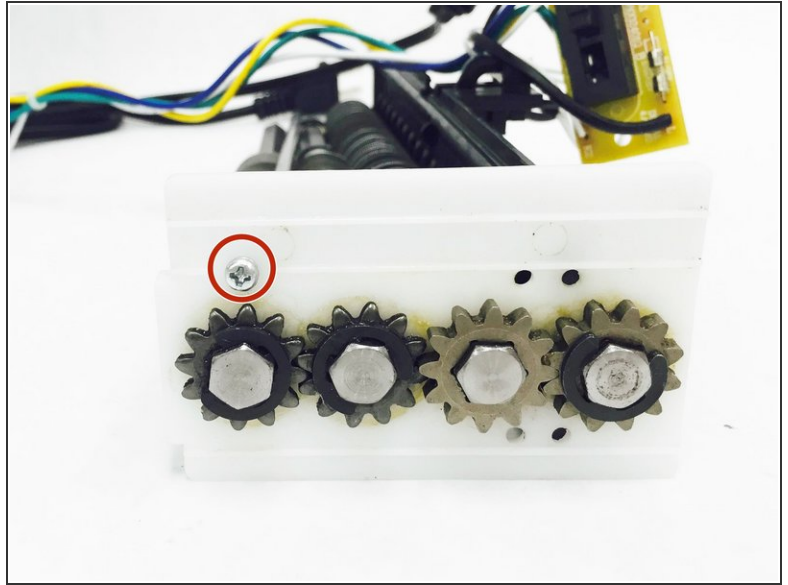
i Upon removal of last screw, the motor will become detached.

Step 10



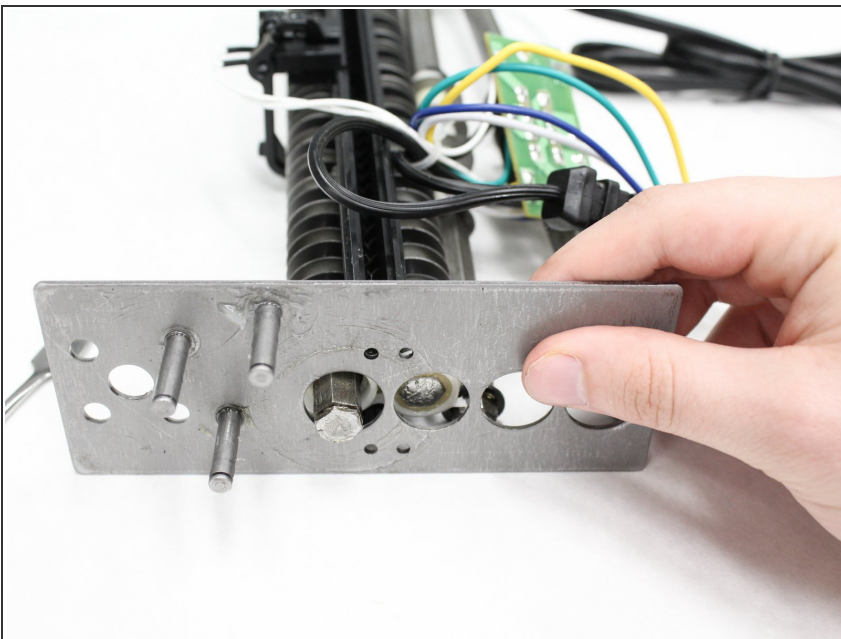
- Remove the 15 mm Phillips #1 screw located on the metal side plate of the shredding unit.

Step 11



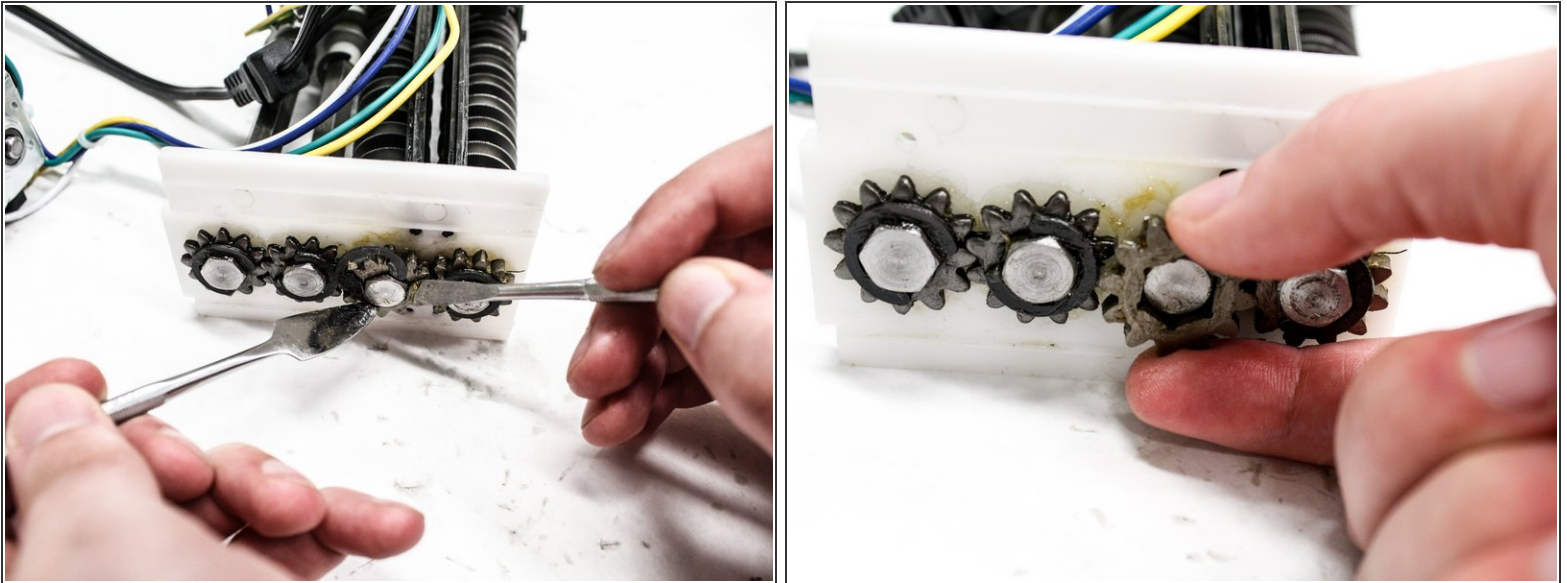
- Remove the 15 mm Phillips #1 screw located on the plastic side plate of the shredding unit.
- ⓘ Upon removal of this screw, the thin metal bar will become detached from the shredding unit.

Step 12



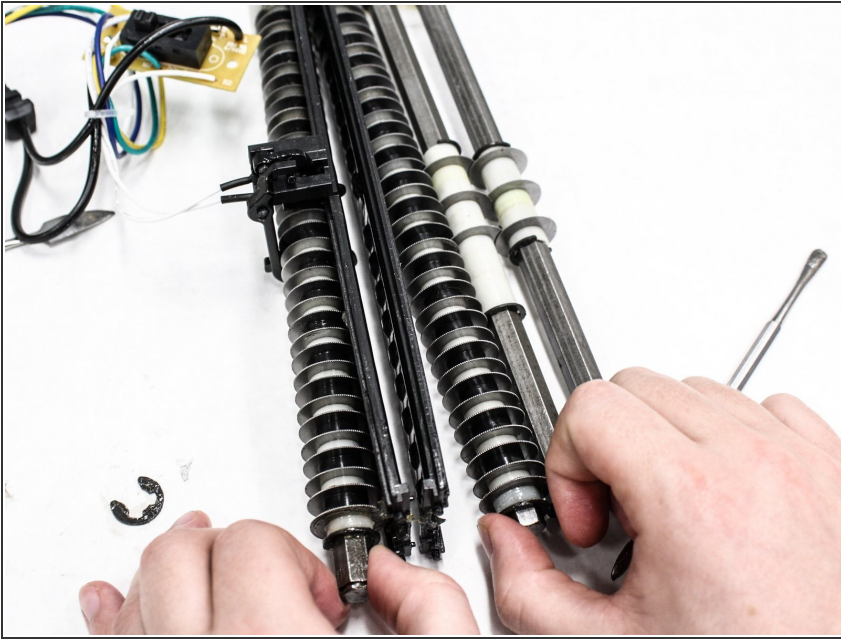
- Remove the metal side piece from the shredding unit.

Step 13



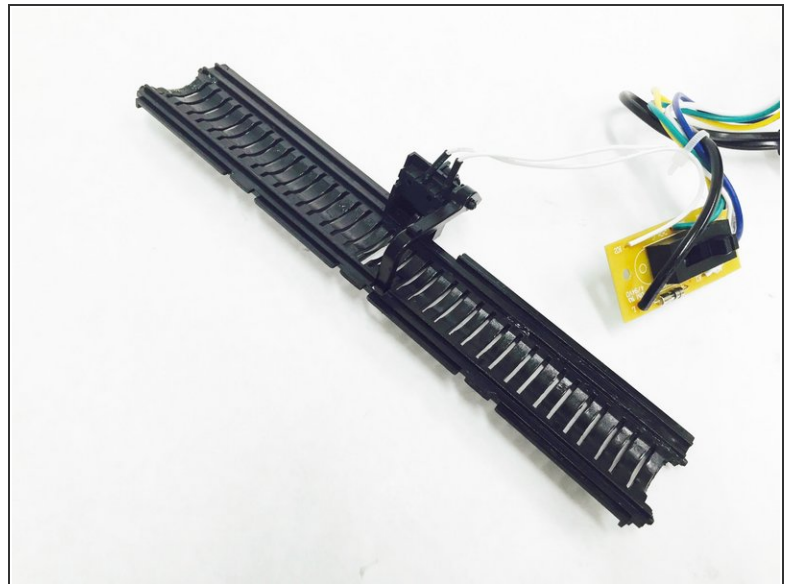
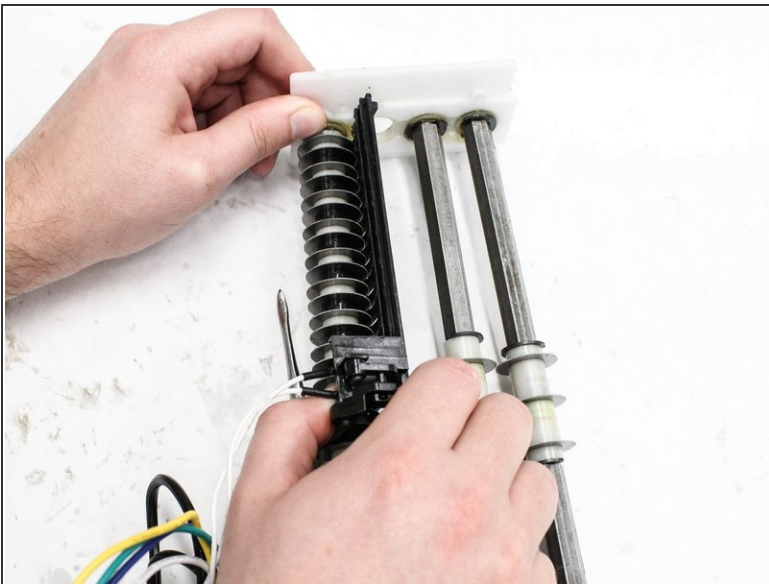
- Remove the washer from the gear second from the right using two metal spudgers. Place one spudger on each of the open ends of the washer. Push down with both spudgers at the same time to pop the washer off the gear.
- ⓘ Make sure the gear you are removing is what is attaching the activation sensor to the blades.
- Pull the gear away from plastic side piece of the shredding unit.

Step 14



- Remove the middle blade from the plastic side piece by pulling it away from the sensor. The blade will fall away from the other attached parts of the unit.

Step 15



- Unhinge the sensor clamp from the blade by pushing with your thumb and pull the sensor away from the plastic side piece with the other hand to detach the activation sensor from the entire shredding unit.

To reassemble your device, follow these instructions in reverse order.