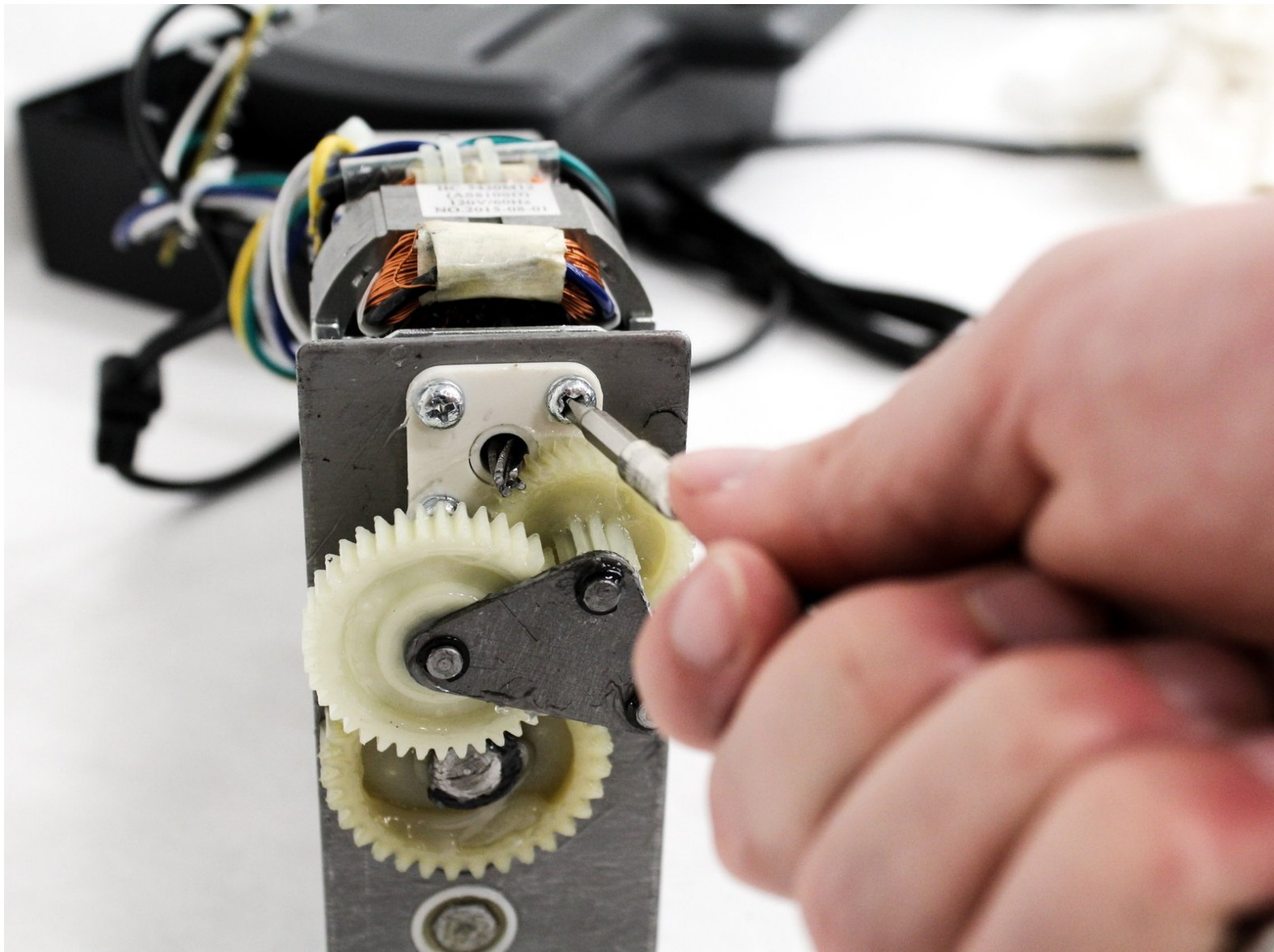




# AmazonBasics B0050BPWBQ Shredding Gears Replacement

If the shredding gears get worn down or broken, you may need to replace them.

Written By: Natalie Meert



---

## INTRODUCTION

When the gears get worn down, the shredder no longer shreds the papers when inserted into the slot. This guide will show how to remove the gears in order to replace them. You will run into a lot of grease while replacing these gears so have some toweling on hand.





### TOOLS:

- [Phillips #1 Screwdriver](#) (1)
-

## Step 1 — Front and Back Panel Disassembly



-  The unit head needs to be switched to the off position and unplugged before any disassembly.
-  When removing screws in the following steps, make sure the unit is resting on a flat surface because pieces will easily come apart.
- Remove seven 11 mm Phillips #1 screws from the underside of the head unit.

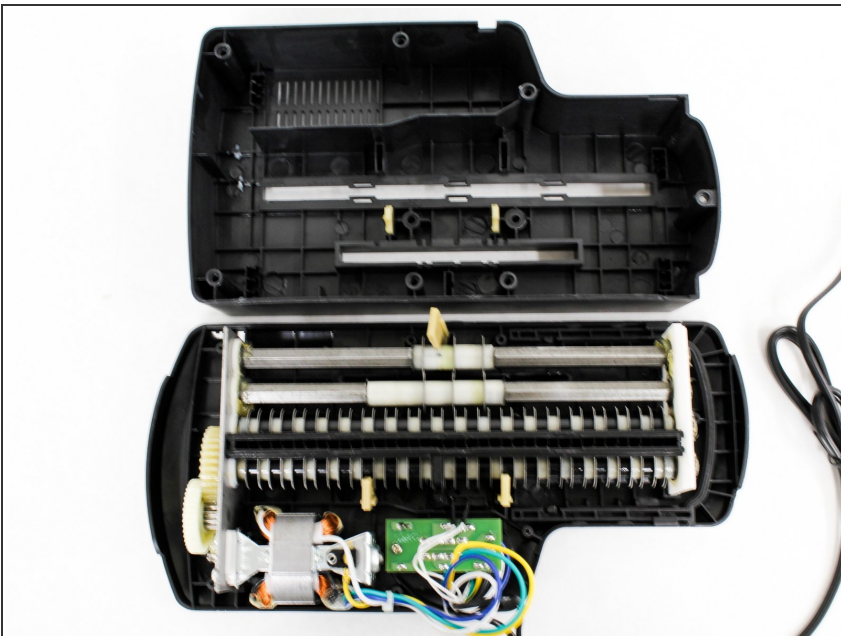
## Step 2



☑ Upon removal of the next screws, the front panel and the shredding component attached to it will fall apart from the back panel so have the unit resting on a flat surface.

- Remove two 50 mm Phillips #1 screws from the middle of the underside of the head unit.

## Step 3

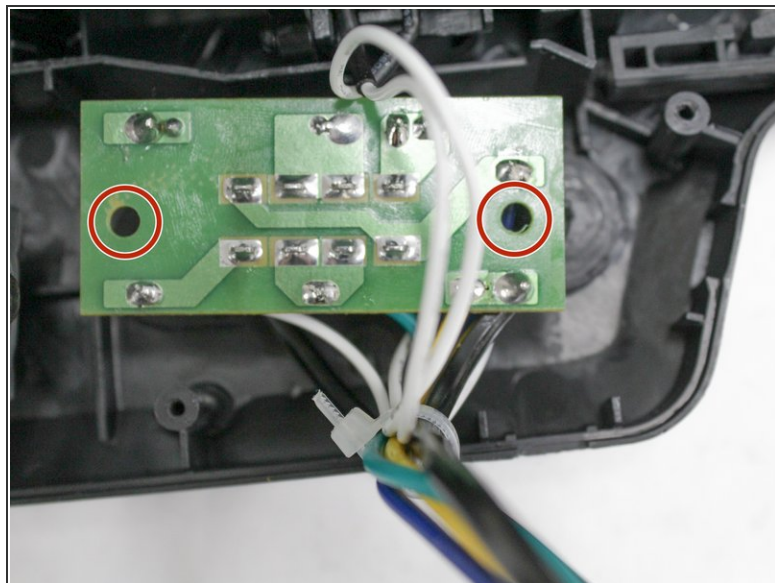
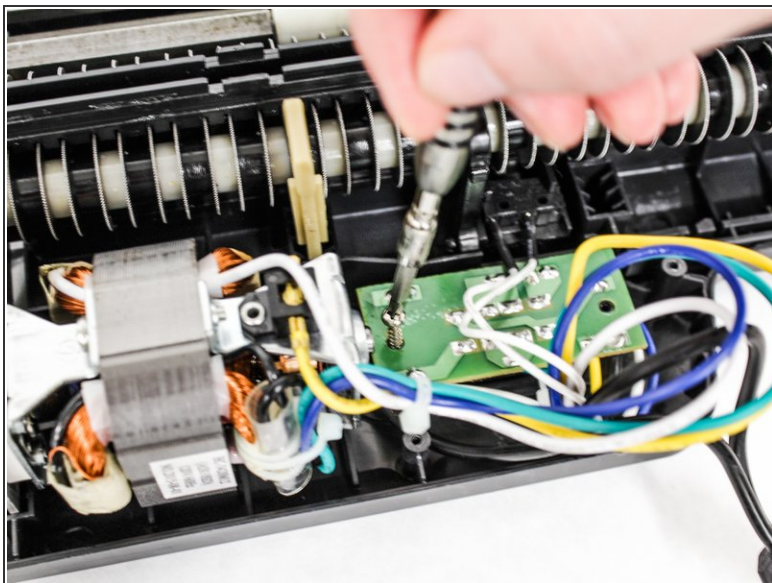


- Lay the back panel away from the front panel on a flat surface.

ⓘ The back panel will be light because it is only the plastic, while the front panel will be heavy with the shredding component attached to it.

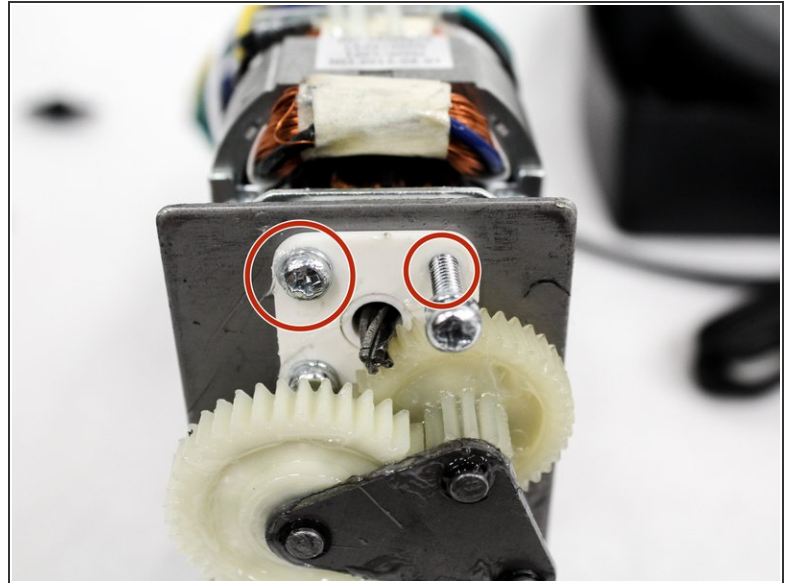
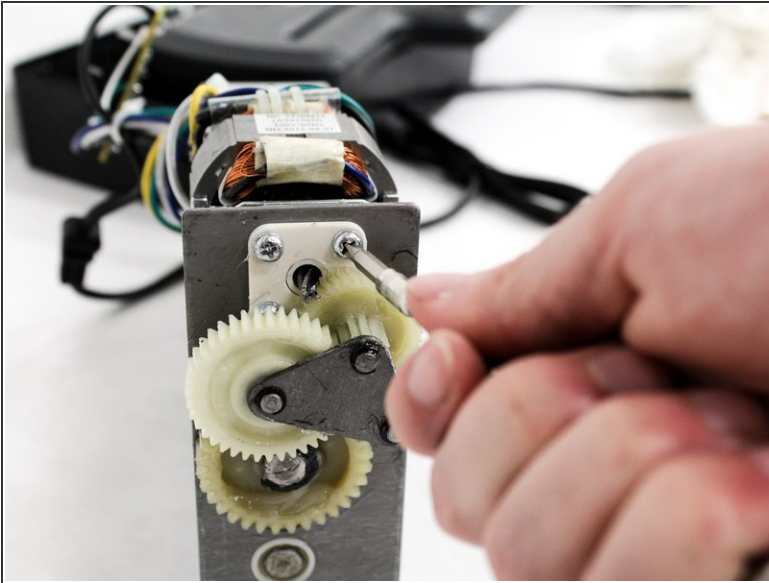


## Step 4



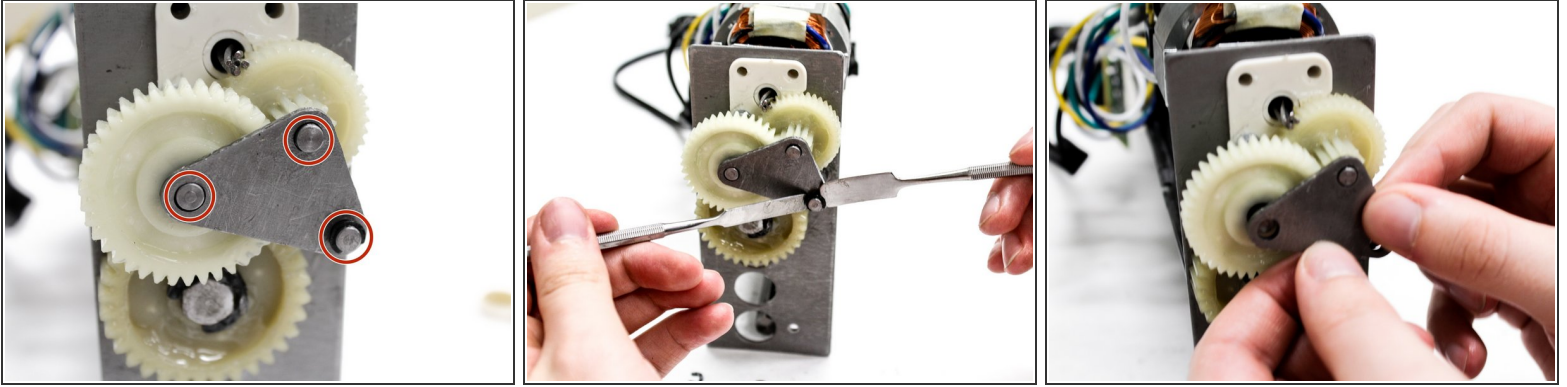
- Find the green control board that is located next to the shredding motor.
- Remove two 11 mm Phillips #1 screws located on opposite sides of the control board.
- ⓘ You may need to move wires over to find the screws.

## Step 5 — Shredding Gears



- i** Unit may be greasy so you may want to grab paper towels/rag when completing these next steps.
- Locate the large white gears on the side of the shredding unit.
  - Remove two 15 mm Phillips #1 screws that hold the motor in place.

## Step 6



- Locate the three washers on the metal triangle piece.
- Remove the three washers using two metal spudgers. To do this, place one spudger on each of the open ends of the washer. Push down with both spudgers at the same time to pop the washer off the gear.
- Pull the metal triangle away from the gears.

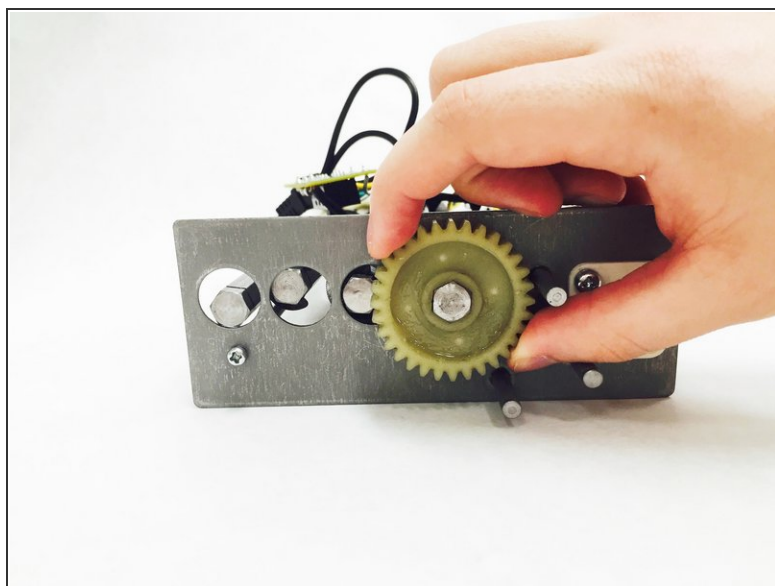
## Step 7



- Remove the middle gear from the shredding unit.
- Remove the top gear that was located under the middle gear.



## Step 8



- Remove the washer on the last gear using two metal spudgers. Again, place one spudger on each of the open ends of the washer. Push down with both spudgers at the same time to pop the washer off the gear.
- Pull the last gear away from the metal shredding unit.

To reassemble your device, follow these instructions in reverse order.