



Fujifilm FinePix S8630 Speaker Replacement

This guide will explain how to replace the speaker of your device.

Written By: Colton Lancsarics





TOOLS:

- [iFixit Opening Tools](#) (1)
- [JIS Driver Set](#) (1)
- [Soldering Iron](#) (1)

Step 1 — Battery Door



- Remove the M3 x 4mm screws from the bottom of your device as indicated by the picture. using the Philips Head J0 Screw Driver Bit .

Step 2



- Use your Philips Head Screwdriver to remove the M3 x 4mm screws from the left side of the device as indicated by the pictures.

Step 3



- Use your Philips Head Screwdriver to remove the M3 x 4mm screws from the right side of the device as indicated by the pictures.

Step 4



- Use your Philips Head Screwdriver to remove the M3 x 4mm screws from the camera flash lid as indicated by the picture.
- Remove the plastic cover from the flash lid by gentle pulling them apart or using the plastic opening tool.

Step 5



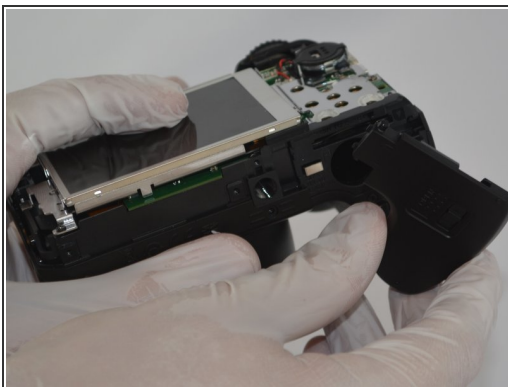
- Fold the lid down in order to access and remove the final M3 x 4mm screw using your Philips Head Screwdriver.

Step 6



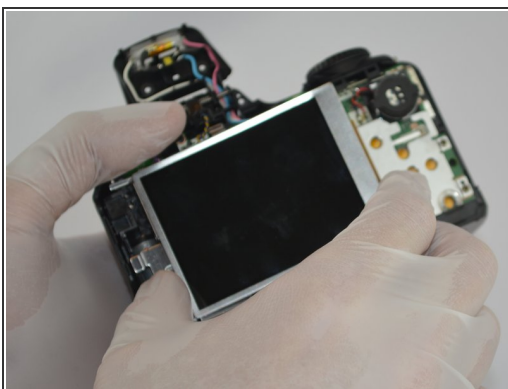
- Use the plastic opening tool to pry the back and front casings of the camera apart.
- Once pried apart use your hands to pull off the back plate of the camera.
- You will need to apply a little bit of force to remove the back plate.

Step 7



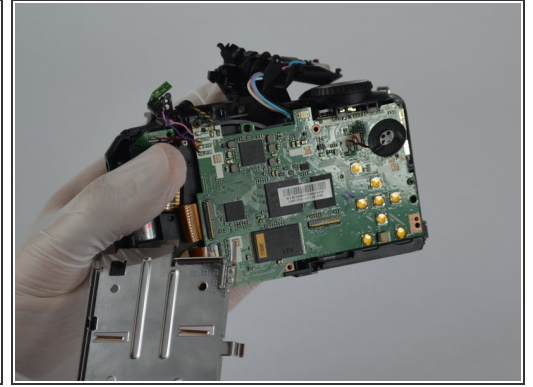
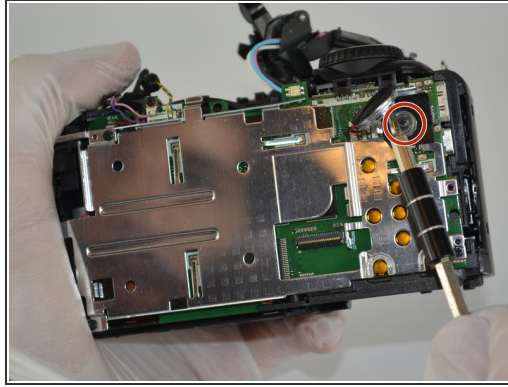
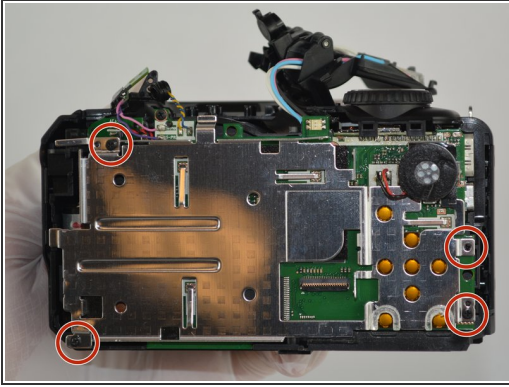
- Once the back plate is removed twist the battery cover clockwise and it should easily dislodge.

Step 8 — LCD Screen



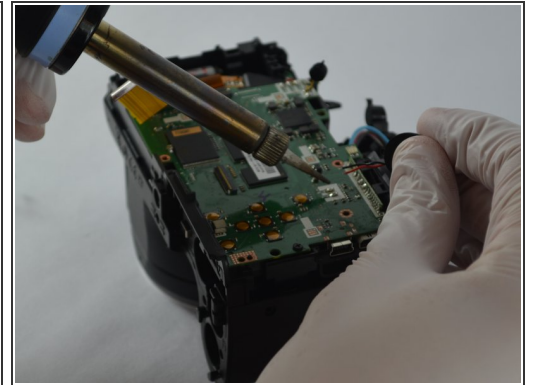
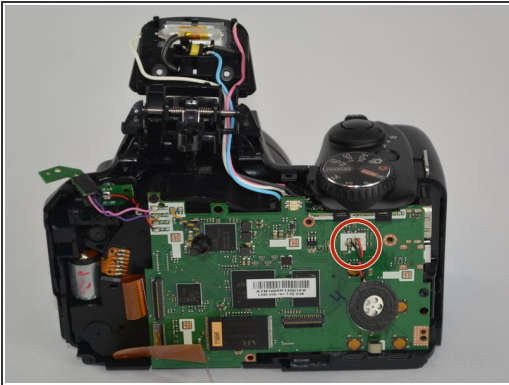
- Gently pull the tab out of the motherboard and then the LCD screen should easily be removed.

Step 9 — Speaker



- Using your Philips head screwdriver remove the screws from the metal shield.
- Remove the metal shield.

Step 10



- Find the speaker and gently pull away from the motherboard. It is just on by an adhesive.
- Identify where the speaker is connected to the motherboard and unsolder both of the connections,
- Guide for Soldering: [How To Solder and Desolder Connections](#)

To reassemble your device, follow these instructions in reverse order.