



Cambridge SoundWorks OontZ Angle Plus Motherboard Replacement

Replace the motherboard of the Cambridge SoundWorks OontZ Angle Plus.

Written By: Farshad Mohebban



INTRODUCTION

Use this guide to replace the motherboard of the Cambridge SoundWorks OontZ Angle Plus.



TOOLS:

- [Phillips #1 Screwdriver](#) (1)
 - [Soldering Iron](#) (1)
 - [iFixit Opening Tools](#) (1)
-

Step 1 — Lower Casing



- Pull back the six screw covers on the bottom of the device.
- Starting from the screw covers, peel the casing away from the bottom plate.

Step 2 — Battery



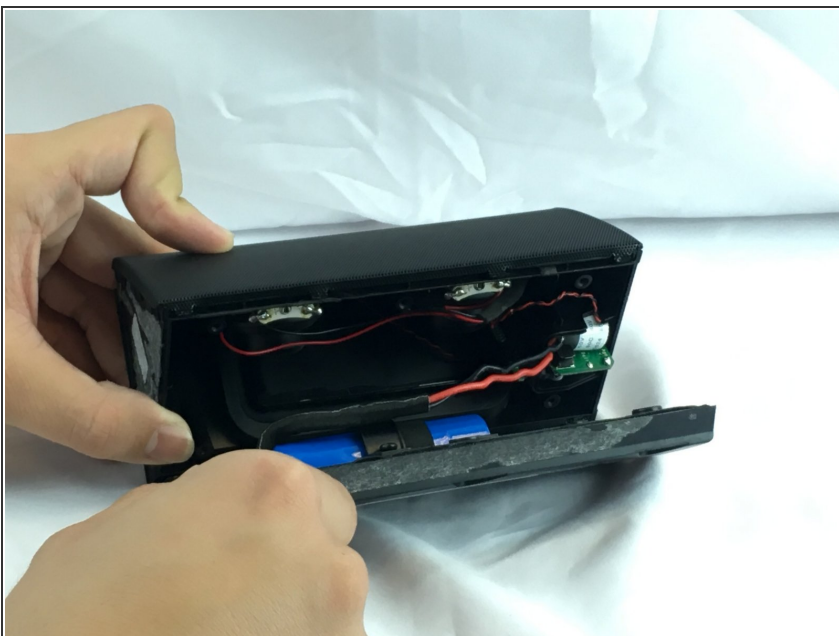
- Unscrew the five 11.5mm Phillips screws on the bottom plate.

Step 3



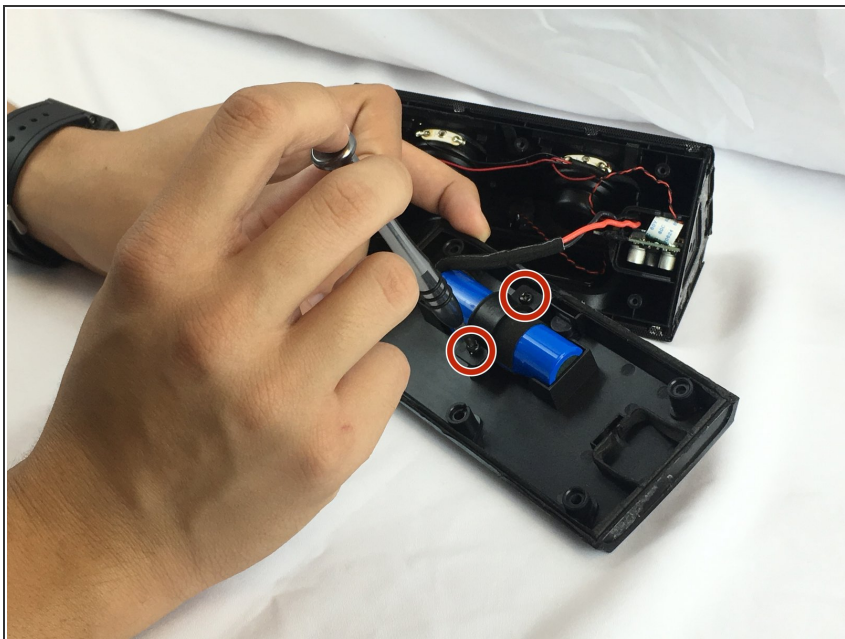
- Carefully pull apart the bottom plate and the top plate, using the blue plastic opening tool.

Step 4



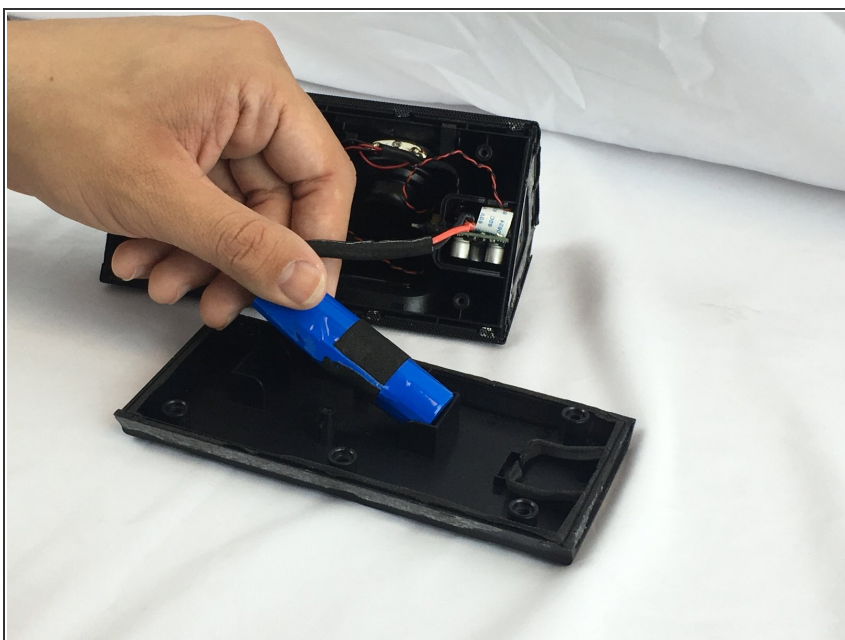
- Once the bottom plate and the top plate are separated, slowly pull the back plate away from the top plate.
- ⓘ There are wires connected to both plates so do this step with care.

Step 5



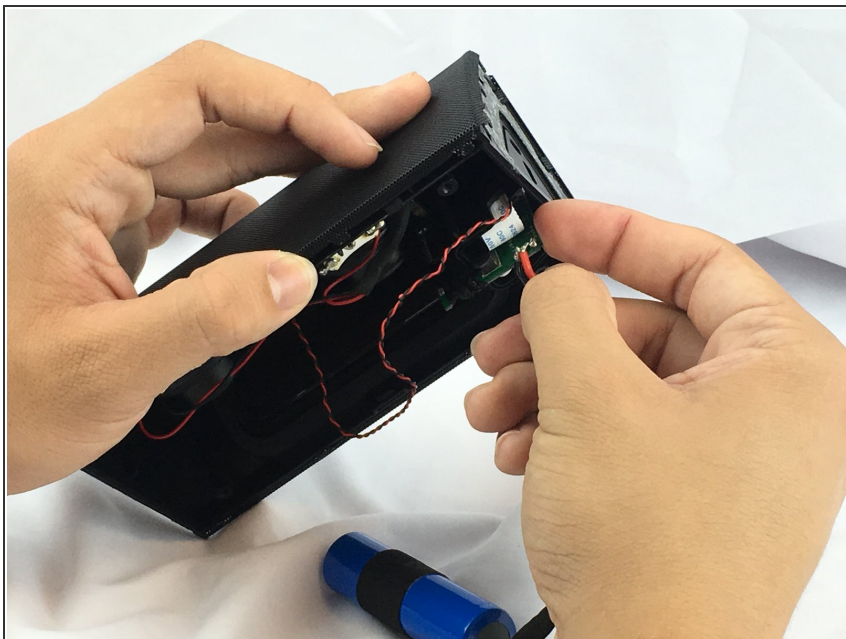
- Unscrew the two 10 mm Phillips screws on the brace holding down the battery.
- Remove the brace that holds the battery in place.

Step 6



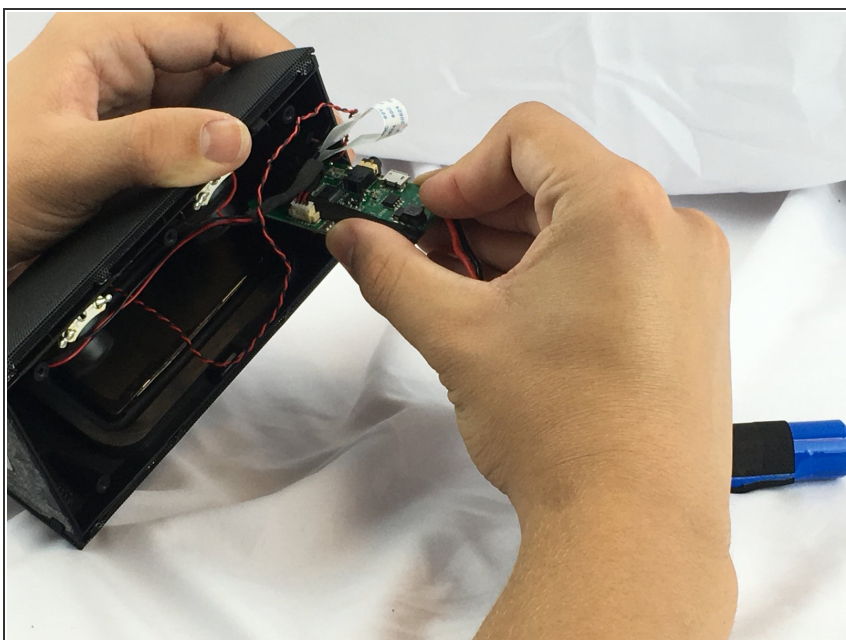
- Separate the battery from the bottom plate and set the bottom plate aside.

Step 7



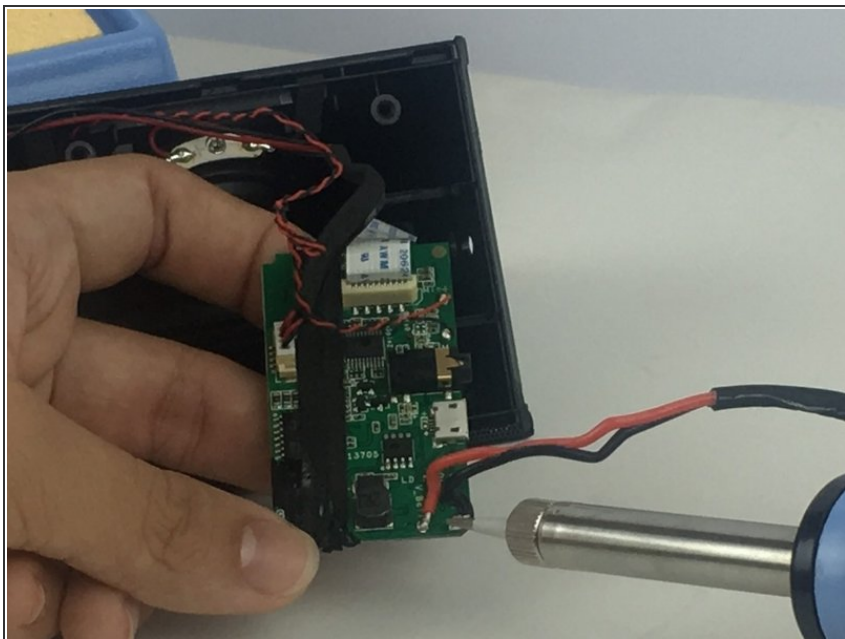
- With some force, push the motherboard straight in toward the center of the device.

Step 8



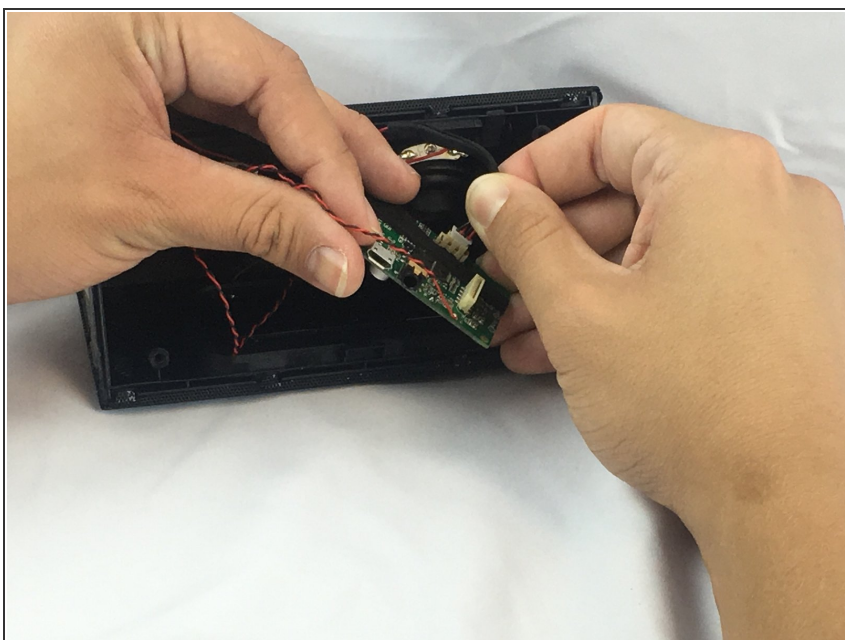
- Pull the motherboard straight out of the device.
- ⓘ There is some adhesive on the motherboard that holds it in place. This make the motherboard fit in the groove rather tight.

Step 9



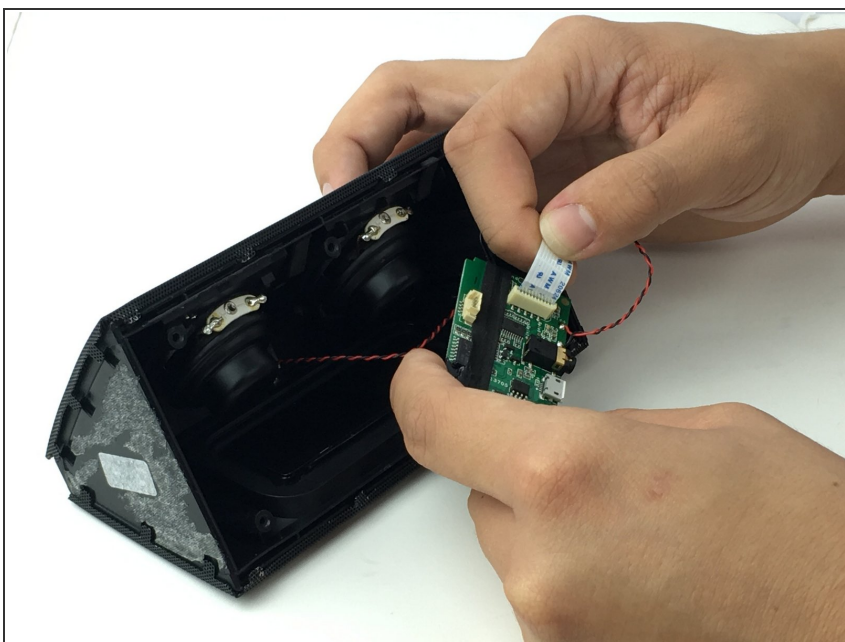
- Desolder the wires that connect the battery to the motherboard, negative (black wire) and positive (red wire).

Step 10 — Motherboard



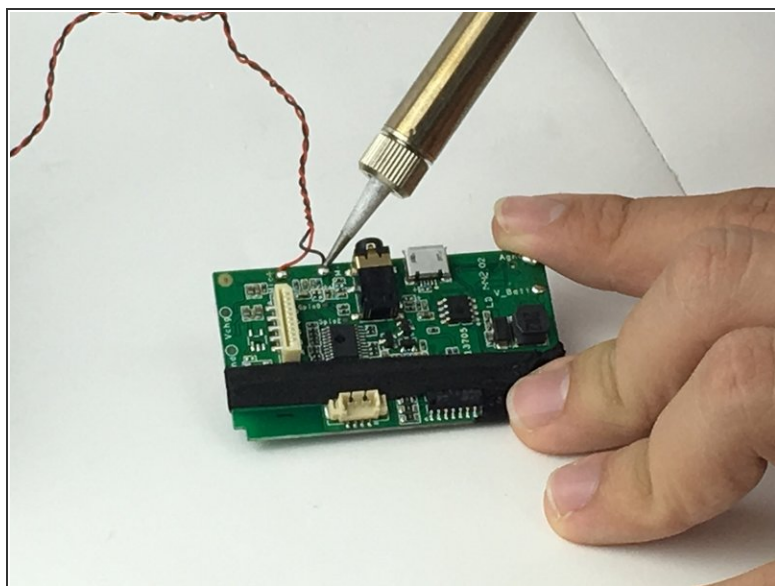
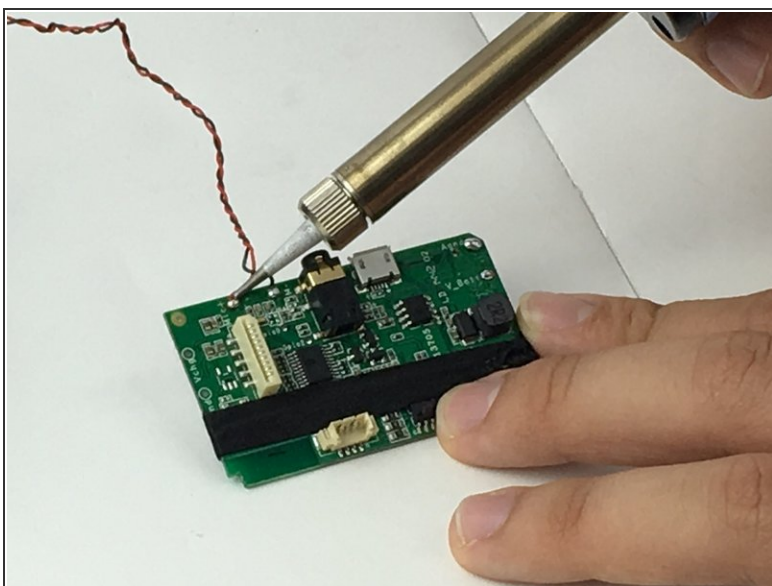
- Unplug the wires that connect the speakers to the motherboard.

Step 11



- Unplug the thin white cable connected to the buttons.

Step 12



- Desolder the wires that connect the LED to the motherboard.

To reassemble your device, follow these instructions in reverse order.