



Samsung WB850F Screen Replacement

This guide will give user step by step...

Written By: Jousling Vazquez



INTRODUCTION

This guide will give user step by step instructions on how to replace the screen of the camera.

TOOLS:

Phillips #0 Screwdriver (1)

iFixit Opening Tool (1)

Tweezers (1)

PARTS:

samsung WB850F LCD Screen (1)

Step 1 — Screen



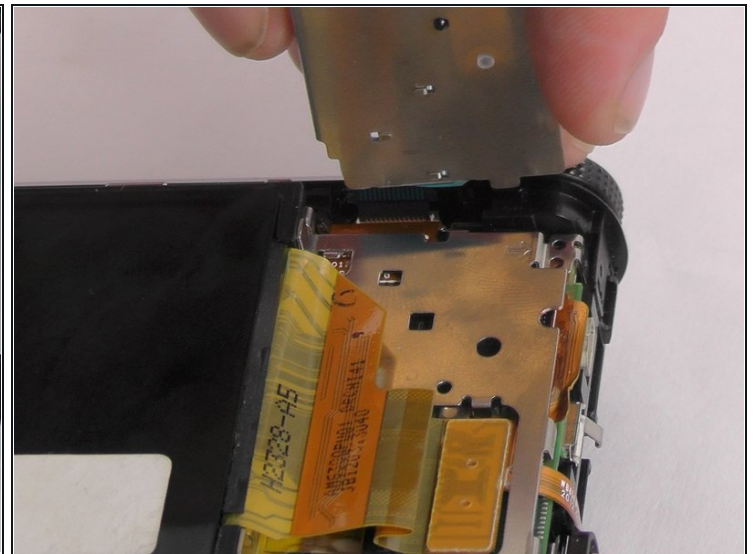
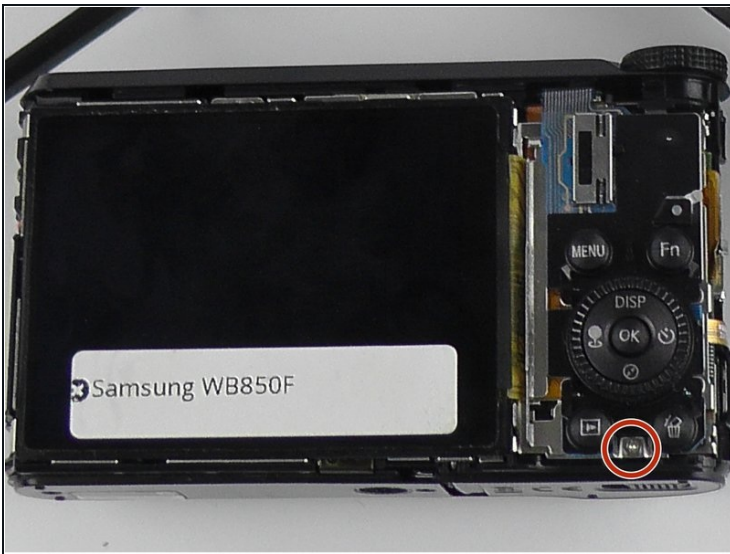
- First remove the battery and SD Card
- Then use the screwdriver to remove the 6 screws that need to be removed to take off the outer case.
- 2 screws are located on the bottom.
- 2 screws are located on the left side (near the HDMI port).
- 2 screws are located on the right side (opposite side of the HDMI port).

Step 2



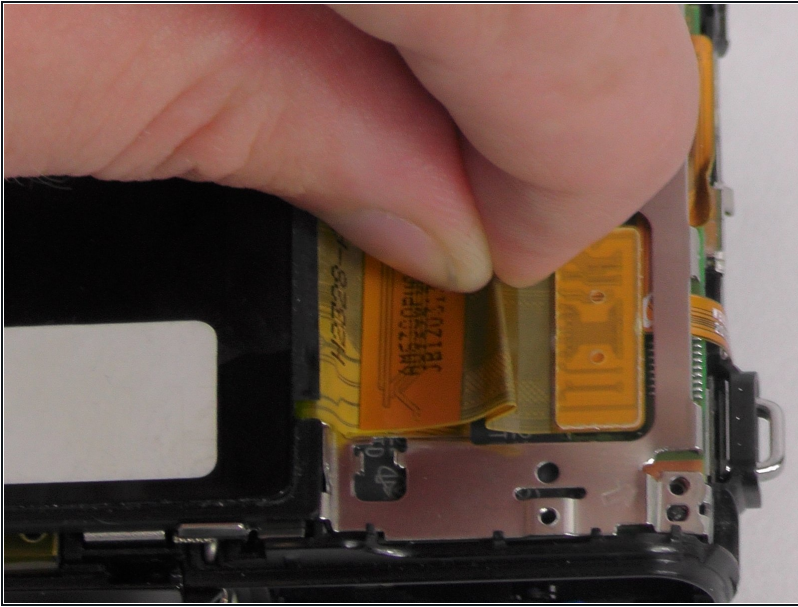
- Once the screws are removed, use the blue opening tool to open the back case from the sides - it should come off easily.

Step 3



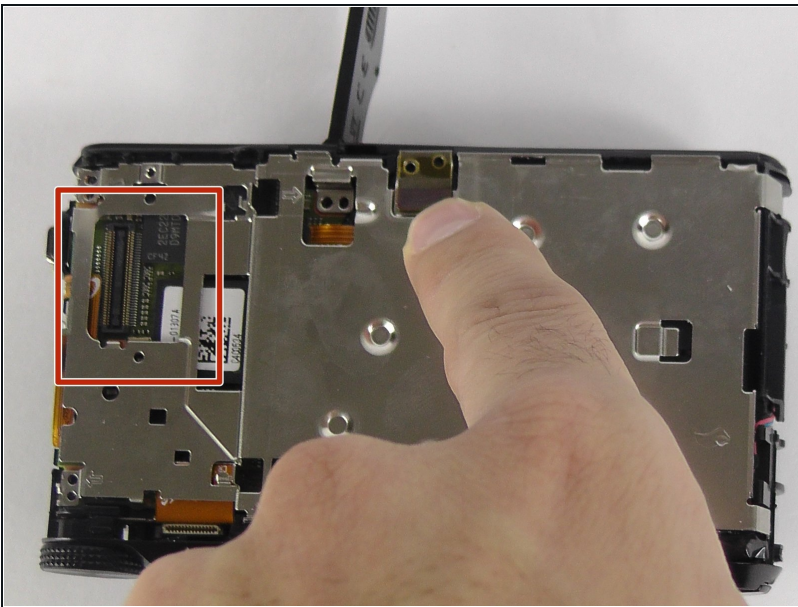
- Use the screwdriver to remove the small silver screw holding down the control panel (located on the bottom right next to the screen).
- Use the blue opening tool to lift up the control panel from where the screw was just removed.

Step 4



- Use the [tweezers](#) to gently pull the yellow control board ribbon cable out of its connector.
- The display cable stands straight up and pops out easily. Pull up on it to remove the screen from the camera.

Step 5



- Connect the new screen by gently pressing the display cable on to its connector (on the motherboard).
- ☑ When reinserting the control board, make sure the top of the control board is under the lip before screwing it in place.

To reassemble your device, follow these instructions in reverse order.