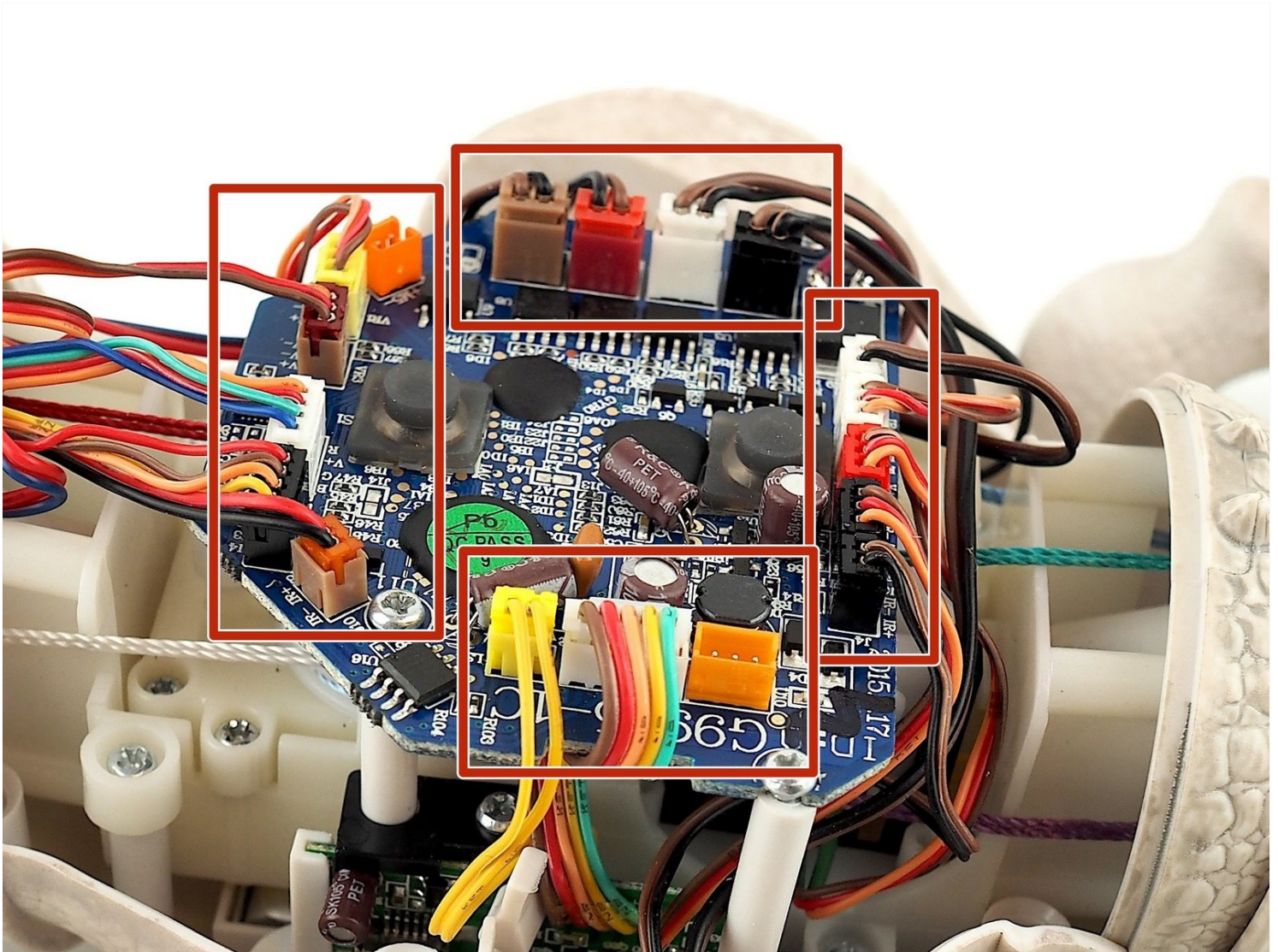




Zoomer Jurassic World Indominus Rex Motherboard Replacement

Motherboard is the most important component of...

Written By: Anh Le



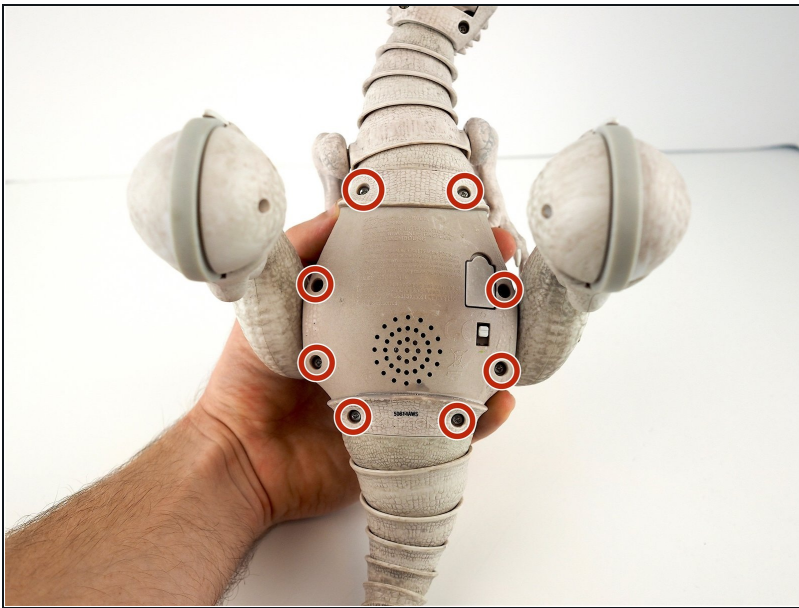
INTRODUCTION

Motherboard is the most important component of a Zoomer Jurassic World Indominus Rex. If all else fails, we can always replace the motherboard. Knowing how to solder before attempting this guide is extremely encouraged. Details about soldering technique guide can be found at the last step of this guide.

TOOLS:

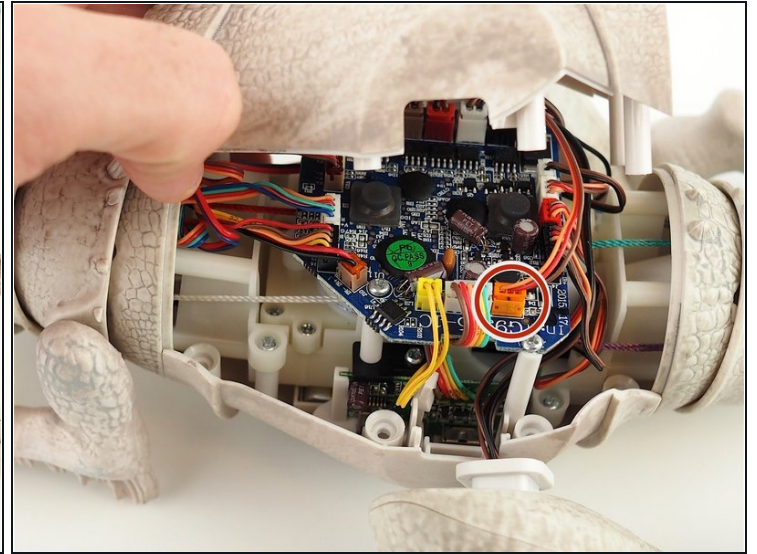
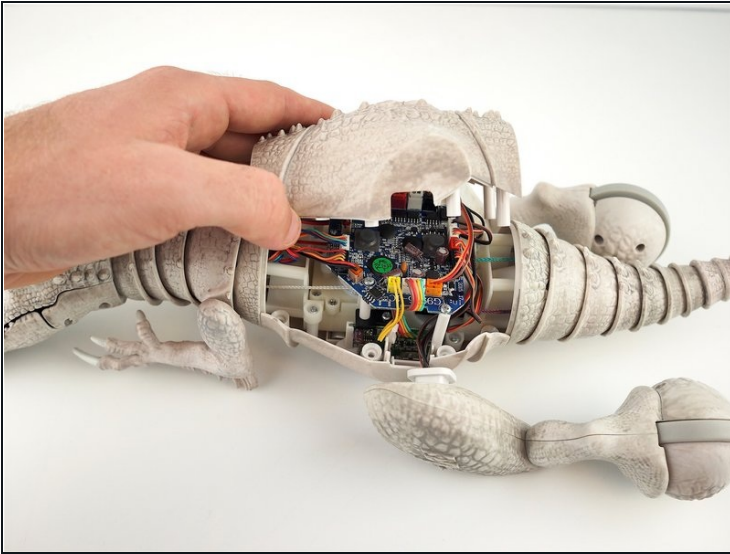
[Heavy-Duty Spudger](#) (1)
[Phillips #1 Screwdriver](#) (1)
[Tweezers](#) (1)
[Soldering Iron](#) (1)
[Soldering Workstation](#) (1)
[Soldering Tweezers](#) (1)

Step 1 — Back Cover



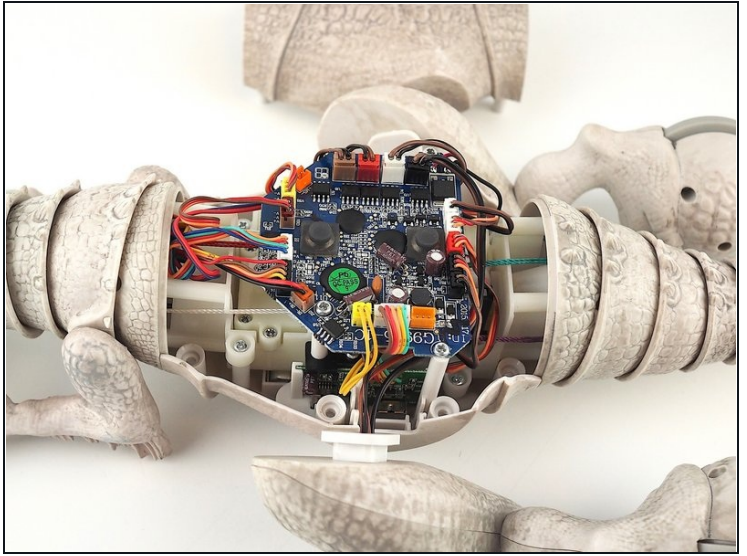
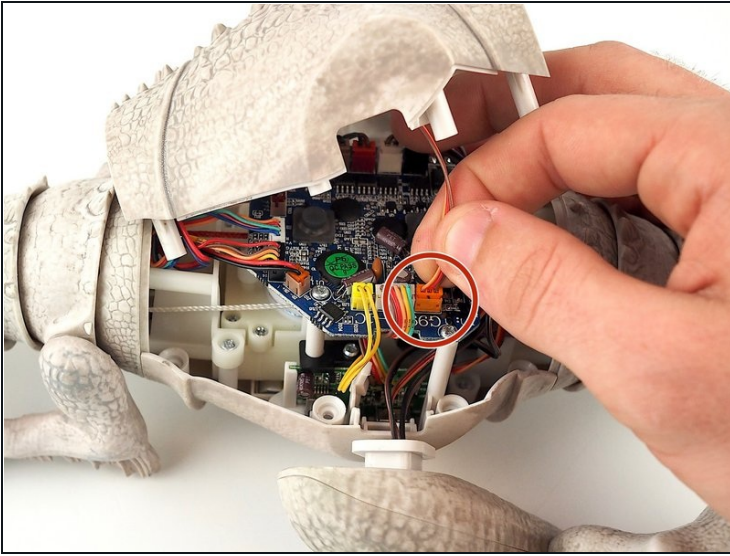
- ① Turn off and unplug Zoomer Jurassic World Indominus Rex from any power source before doing replacements.
- Remove all eight (8) 9.3mm Phillips screws using Phillips #1 screwdriver.

Step 2



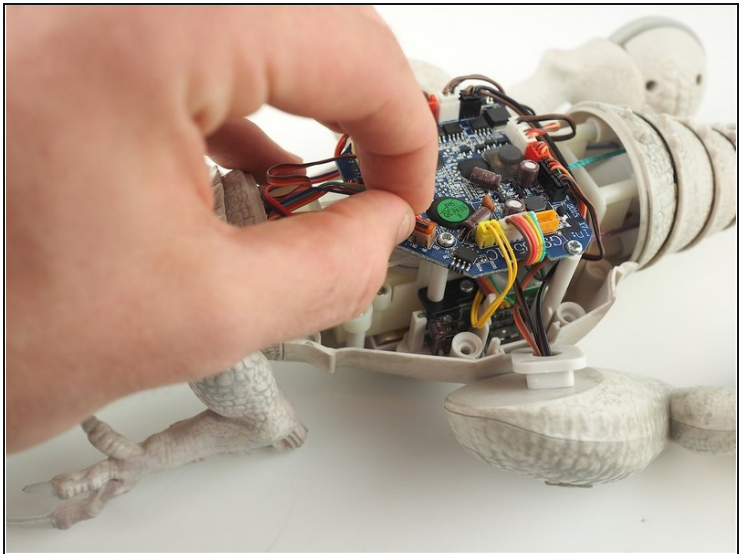
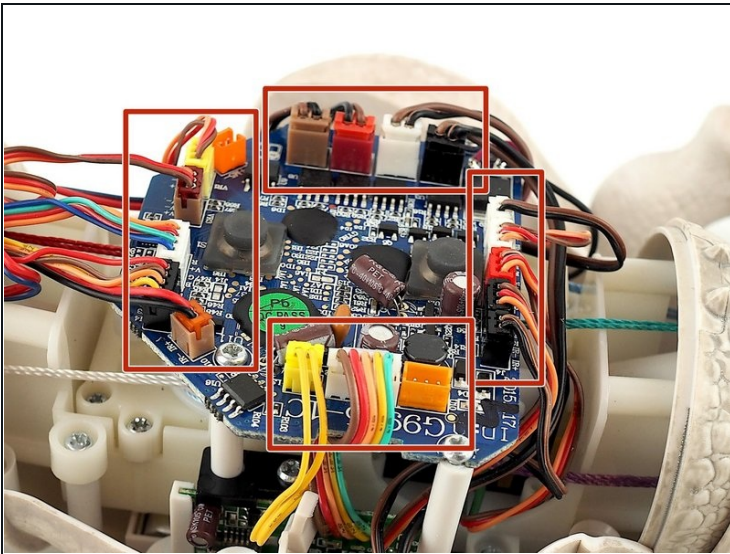
- Pry apart the back cover of the Jurassic Indominus Rex and the rest of the body using a spudger.
⚠ Do not take out the back cover immediately as it is still attached to the motherboard by a wire.

Step 3



- Disconnect the orange wire that connects the motherboard and the back cover.
- Separate the back cover and the rest of the Zoomer Jurassic World Indominus Rex.
 - ① Gently press the tab on the side of the orange connector if you are having trouble disconnecting the wire.

Step 4 — Motherboard



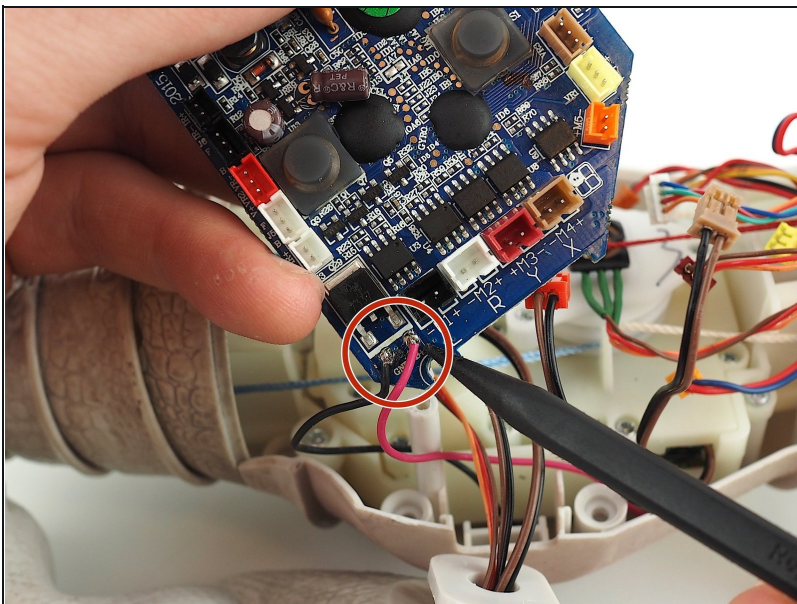
- ① Let the toy rest firmly on a flat surface before processing to the next step.
- Gently pull each wire out of the connector on the motherboard. Use a set of [tweezers](#), if necessary.

Step 5



- Remove the two (2) #0 7.5mm phillips screws from the left side of the motherboard.
- Remove the one (1) 7.5mm #0 phillips screw from the right side of the motherboard.

Step 6



- Use a soldering iron to remove the red and black wires from the motherboard .
- ① Soldering technique guide from iFixit can be found [here](#).
- ⚠ Use caution while soldering to avoid being burned.

To reassemble your device, follow these instructions in reverse order.